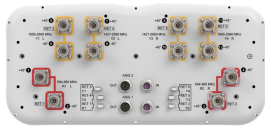


RRZZVV-65D-R6NV3



12-port sector antenna, 4x 694-960,4x 1427-2690 and 4x 1695- 2690 MHz, 65° HPBW, 6x RET

- SEED® antenna providing high gain and improved efficiency
- Reduces the amount of aluminum used to minimize CO2 release
- Innovative aerodynamic shape optimized for reduced wind loading in every direction
- High radiation and pattern efficiency for improved coverage area, capacity or reduced power consumption for a given area

General Specifications

| | |
|----------------------------------|--|
| Antenna Type | Sector |
| Band | Multiband |
| Color | Light Gray (RAL 7035) |
| Grounding Type | RF connector inner conductor and body grounded to reflector and mounting bracket |
| Performance Note | Outdoor usage |
| Radome Material | Fiberglass, UV resistant |
| Reflector Material | Aluminum |
| RF Connector Interface | 4.3-10 Female |
| RF Connector Location | Bottom |
| RF Connector Quantity, high band | 0 |
| RF Connector Quantity, mid band | 8 |
| RF Connector Quantity, low band | 4 |
| RF Connector Quantity, total | 12 |

Remote Electrical Tilt (RET) Information

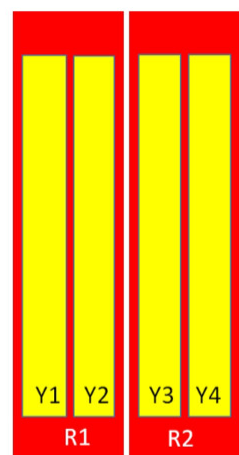
| | |
|--|-----------------------------------|
| RET Hardware | CommRET v2 |
| RET Interface | 8-pin DIN Female 8-pin DIN Male |
| RET Interface, quantity | 2 female 2 male |
| Input Voltage | 10-30 Vdc |
| Internal RET | Low band (2) Mid band (4) |
| Power Consumption, active state, maximum | 8 W |
| Power Consumption, idle state, maximum | 1 W |
| Protocol | 3GPP/AISG 2.0 (Single RET) |

RRZZVV-65D-R6NV3

Dimensions

| | |
|--------------------------|----------------------|
| Width | 430 mm 16.929 in |
| Depth | 197 mm 7.756 in |
| Length | 2769 mm 109.016 in |
| Net Weight, antenna only | 46 kg 101.413 lb |

Array Layout



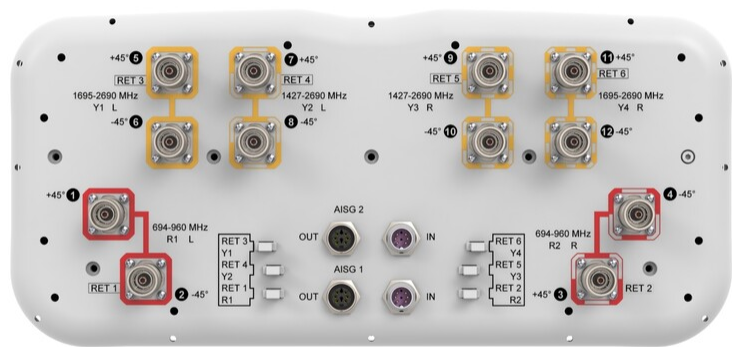
Left Bottom Right

| Array | Freq (MHz) | Conns | RET (SRET) | AISG RET UID |
|-------|------------|-------|---------------|----------------------|
| R1 | 694-960 | 1-2 | 1 | CPxxxxxxxxxxxxxxxxR1 |
| R2 | 694-960 | 3-4 | 2 | CPxxxxxxxxxxxxxxxxR2 |
| Y1 | 1695-2690 | 5-6 | 3 | CPxxxxxxxxxxxxxxxxY1 |
| Y2 | 1427-2690 | 7-8 | 4 | CPxxxxxxxxxxxxxxxxY2 |
| Y3 | 1427-2690 | 9-10 | 5 | CPxxxxxxxxxxxxxxxxY3 |
| Y4 | 1695-2690 | 11-12 | 6 | CPxxxxxxxxxxxxxxxxY4 |

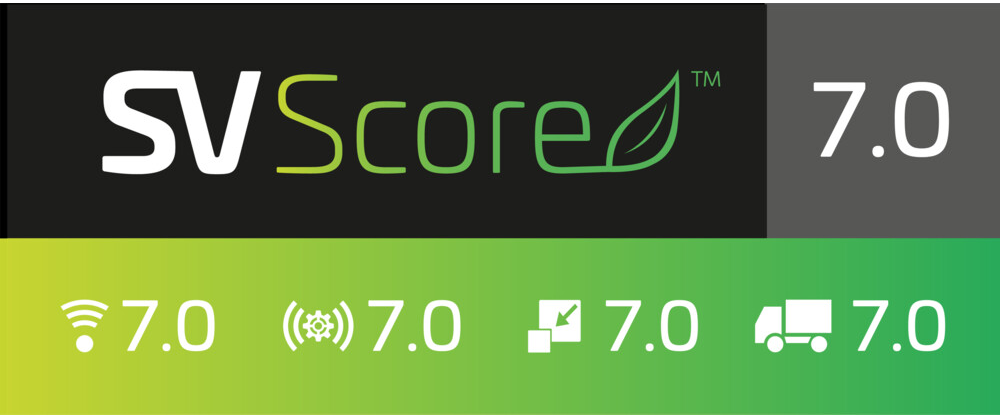
(Sizes of colored boxes are not true depictions of array sizes)

Port Configuration

RRZZVV-65D-R6NV3



Logo Image



Electrical Specifications

| | |
|----------------------------|---|
| Impedance | 50 ohm |
| Operating Frequency Band | 1427 – 2690 MHz 1695 – 2690 MHz 694 – 960 MHz |
| Polarization | ±45° |
| Total Input Power, maximum | 1,200 W @ 50 °C |
| BASTA Version, electrical | BASTA v11 |

RRZZVV-65D-R6NV3

Electrical Specifications

| | R1,R2 | R1,R2 | R1,R2 | Y2,Y3 | Y2,Y3 | Y2,Y3 | Y2,Y3 | Y2,Y3 |
|--|------------|------------|------------|------------|------------|------------|------------|------------|
| Frequency Band, MHz | 698–806 | 790–894 | 890–960 | 1427–1518 | 1695–1995 | 1920–2300 | 2300–2500 | 2490–2690 |
| RF Port | 1,2,3,4 | 1,2,3,4 | 1,2,3,4 | 7,8,9,10 | 7,8,9,10 | 7,8,9,10 | 7,8,9,10 | 7,8,9,10 |
| Gain at Mid Tilt, dBi | 15.6 | 16.3 | 16.6 | 15.7 | 17.8 | 18.3 | 19.4 | 19.4 |
| Beamwidth, Horizontal, degrees | 71 | 61 | 59 | 69 | 62 | 63 | 59 | 58 |
| Beamwidth, Vertical, degrees | 7.5 | 6.8 | 6.4 | 7.2 | 5.8 | 5.3 | 4.3 | 4 |
| Beam Tilt, degrees | 2–12 | 2–12 | 2–12 | 2–12 | 2–12 | 2–12 | 2–12 | 2–12 |
| USLS (First Lobe), dB | 16 | 18 | 18 | 17 | 17 | 17 | 15 | 16 |
| Front-to-Back Ratio at 180°, dB | 30 | 31 | 30 | 30 | 30 | 31 | 32 | 34 |
| Front-to-Back Total Power at 180° ± 30°, dB | 20 | 21 | 20 | 22 | 23 | 26 | 26 | 26 |
| CPR at Boresight, dB | 19 | 20 | 16 | 17 | 21 | 18 | 22 | 22 |
| Isolation, Cross Polarization, dB | 27 | 27 | 27 | 25 | 25 | 25 | 25 | 25 |
| Isolation, Inter-band, dB | 27 | 27 | 27 | 26 | 26 | 26 | 26 | 26 |
| VSWR Return loss, dB | 1.5 14.0 | 1.5 14.0 | 1.5 14.0 | 1.5 14.0 | 1.5 14.0 | 1.5 14.0 | 1.5 14.0 | 1.5 14.0 |
| PIM, 3rd Order, 2 x 20 W, dBc | -153 | -153 | -153 | -153 | -153 | -153 | -153 | -153 |
| Input Power per Port at 50°C, maximum, watts | 300 | 300 | 300 | 250 | 250 | 250 | 200 | 200 |

Electrical Specifications

| | Y1,Y4 | Y1,Y4 | Y1,Y4 | Y1,Y4 |
|---|-----------|-----------|-----------|-----------|
| Frequency Band, MHz | 1695–1995 | 1920–2300 | 2300–2500 | 2490–2690 |
| RF Port | 5,6,11,12 | 5,6,11,12 | 5,6,11,12 | 5,6,11,12 |
| Gain at Mid Tilt, dBi | 17.4 | 18.4 | 18.9 | 19 |
| Beamwidth, Horizontal, degrees | 66 | 64 | 63 | 63 |
| Beamwidth, Vertical, degrees | 6.1 | 5.4 | 4.7 | 4.3 |
| Beam Tilt, degrees | 2–12 | 2–12 | 2–12 | 2–12 |
| USLS (First Lobe), dB | 16 | 17 | 19 | 19 |
| Front-to-Back Ratio at 180°, dB | 26 | 30 | 30 | 34 |
| Front-to-Back Total Power at 180° ± 30°, dB | 22 | 24 | 26 | 26 |
| CPR at Boresight, dB | 21 | 21 | 21 | 18 |

RRZZVV-65D-R6NV3

| | | | | |
|--|------------|------------|------------|------------|
| Isolation, Cross Polarization, dB | 25 | 25 | 25 | 25 |
| Isolation, Inter-band, dB | 26 | 26 | 26 | 26 |
| VSWR Return loss, dB | 1.5 14.0 | 1.5 14.0 | 1.5 14.0 | 1.5 14.0 |
| PIM, 3rd Order, 2 x 20 W, dBc | -153 | -153 | -153 | -153 |
| Input Power per Port at 50°C, maximum, watts | 250 | 250 | 200 | 200 |

Mechanical Specifications

| | |
|----------------------------------|---|
| Wind Loading @ Velocity, frontal | 680.0 N @ 150 km/h (152.9 lbf @ 150 km/h) |
| Wind Loading @ Velocity, lateral | 347.0 N @ 150 km/h (78.0 lbf @ 150 km/h) |
| Wind Loading @ Velocity, maximum | 1,020.0 N @ 150 km/h (229.3 lbf @ 150 km/h) |
| Wind Loading @ Velocity, rear | 434.0 N @ 150 km/h (97.6 lbf @ 150 km/h) |
| Wind Speed, maximum | 241 km/h (150 mph) |

Packaging and Weights

| | |
|----------------|----------------------|
| Width, packed | 529 mm 20.827 in |
| Depth, packed | 356 mm 14.016 in |
| Length, packed | 2897 mm 114.055 in |
| Weight, gross | 59.5 kg 131.175 lb |

Regulatory Compliance/Certifications

| Agency | Classification |
|---------------|--|
| CHINA-ROHS | Below maximum concentration value |
| ISO 9001:2015 | Designed, manufactured and/or distributed under this quality management system |
| REACH-SVHC | Compliant as per SVHC revision on www.commscope.com/ProductCompliance |
| ROHS | Compliant |
| UK-ROHS | Compliant |



Included Products

| | |
|-----------|--|
| BSAMNT-4 | – Wide Profile Antenna Downtilt Mounting Kit for 2.4 - 4.5 in (60 - 115 mm) OD round members. Kit contains one scissor top bracket set and one bottom bracket set. |
| BSAMNT-M4 | – Middle Downtilt Mounting Kit for Long Antennas for 2.4 - 4.5 in (60 - 115 mm) OD round members. Kit contains one scissor bracket set. |

RRZZVV-65D-R6NV3

* Footnotes

Performance Note Severe environmental conditions may degrade optimum performance

