

RV-65S-FVB



4-port sector antenna, 2x 698-960 and 2x 1710-2690 MHz, 65° HPBW, fixed tilt

- Ideal for small cell applications

General Specifications

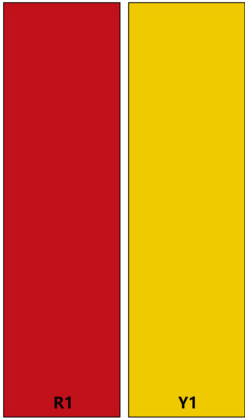
Antenna Type	Sector
Band	Multiband
Color	Light Gray (RAL 7035)
Grounding Type	RF connector inner conductor and body grounded to reflector and mounting bracket
Performance Note	Outdoor usage
Radome Material	Fiberglass, UV resistant
Radiator Material	Aluminum
Reflector Material	Aluminum
RF Connector Interface	4.3-10 Female
RF Connector Location	Bottom
RF Connector Quantity, high band	0
RF Connector Quantity, mid band	2
RF Connector Quantity, low band	2
RF Connector Quantity, total	4

Dimensions

Width	300 mm 11.811 in
Depth	150 mm 5.906 in
Length	597 mm 23.504 in
Net Weight, antenna only	4.6 kg 10.141 lb

Array Layout

RV-65S-FVB



Array ID	Frequency (MHz)	RF Connector	HPBW	RET (N/A)	AISG No.	RET UID
R1	698-960	1 - 2	65°	N/A	NA	N/A
Y1	1710-2690	3 - 4	65°			

(Sizes of colored boxes are not true depictions of array sizes)

Port Configuration



Electrical Specifications

Impedance	50 ohm
Operating Frequency Band	1710 – 2690 MHz 698 – 960 MHz
Polarization	±45°
Total Input Power, maximum	500 W

RV-65S-FVB

Electrical Specifications

	R1	R1	R1	Y1	Y1	Y1	Y1
Frequency Band, MHz	698–806	790–894	880–960	1710–1920	1920–2180	2300–2500	2500–2690
RF Port	1,2	1,2	1,2	3,4	3,4	3,4	3,4
Gain, dBi	11	11.4	11.7	13.4	14.4	15	14.9
Beamwidth, Horizontal, degrees	71	69	65	67	66	64	64
Beamwidth, Vertical, degrees	38	34.6	31.8	18	16.2	13.6	13.1
Beam Tilt, degrees	0	0	0	0	0	0	0
USLS (First Lobe), dB	17	17	16	14	14	13	13
Front-to-Back Ratio, Copolarization 180° ± 30°, dB	25	26	25	24	27	27	28
CPR at Boresight, dB	21	22	21	25	24	26	25
Isolation, Cross Polarization, dB	20	20	20	23	23	23	23
Isolation, Inter-band, dB	25	25	25	25	25	25	25
VSWR Return loss, dB	1.5 14.0	1.5 14.0	1.5 14.0	1.5 14.0	1.5 14.0	1.5 14.0	1.5 14.0
PIM, 3rd Order, 2 x 20 W, dBc	-150	-150	-150	-150	-150	-150	-150
Input Power per Port, maximum, watts	250	250	250	200	200	200	200

Mechanical Specifications

Wind Loading @ Velocity, frontal	102.0 N @ 150 km/h (22.9 lbf @ 150 km/h)
Wind Loading @ Velocity, lateral	47.0 N @ 150 km/h (10.6 lbf @ 150 km/h)
Wind Loading @ Velocity, rear	102.0 N @ 150 km/h (22.9 lbf @ 150 km/h)
Wind Speed, maximum	200 km/h (124 mph)

Packaging and Weights

Width, packed	395 mm 15.551 in
Depth, packed	270 mm 10.63 in
Length, packed	750 mm 29.528 in
Weight, gross	8.3 kg 18.298 lb

Regulatory Compliance/Certifications

Agency	Classification
CHINA-ROHS	Below maximum concentration value

RV-65S-FVB

ISO 9001:2015	Designed, manufactured and/or distributed under this quality management system
REACH-SVHC	Compliant as per SVHC revision on www.andrew.com/ProductCompliance
ROHS	Compliant
UK-ROHS	Compliant



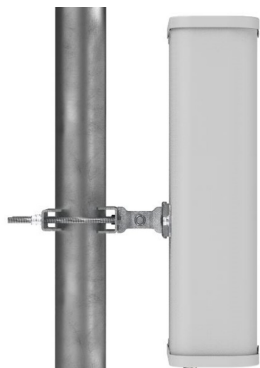
Included Products

BSAMNT-B95-05	–	Wide Profile Antenna Downtilt Mounting Kit for 2.4 - 4.5 in (60 - 115 mm) OD round members. Kit contains one bracket set.
---------------	---	---

* Footnotes

Performance Note	Severe environmental conditions may degrade optimum performance
-------------------------	---

BSAMNT-B95-05



Wide Profile Antenna Downtilt Mounting Kit for 2.4 - 4.5 in (60 - 115 mm) OD round members. Kit contains one bracket set.

Product Classification

Product Type Downtilt mounting kit

General Specifications

Application Outdoor

Color Silver

Dimensions

Compatible Diameter, maximum 115 mm | 4.528 in

Compatible Diameter, minimum 60 mm | 2.362 in

Weight, net 1.6 kg | 3.527 lb

Material Specifications

Material Type Galvanized steel

Packaging and Weights

Included Brackets | Hardware

Packaging quantity 1

Regulatory Compliance/Certifications

Agency	Classification
CE	Compliant with the relevant CE product directives
ISO 9001:2015	Designed, manufactured and/or distributed under this quality management system

