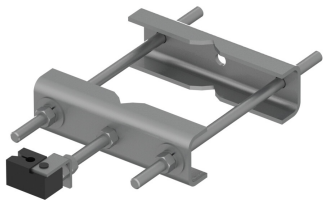


MUK-MSK9L | UNIVERSAL LEG CLAMP FOR LARGER LEG



Large Tower Leg Clamp, Mounts to 1/2" to 6-5/8" Round or Up to 6" Angle Tower legs

Product Classification

Product Type Clamp set

General Specifications

Mounting Round and angle legs

Dimensions

Mounting Diameter, maximum 168.275 mm | 6.625 in

Mounting Diameter, minimum 38.1 mm | 1.5 in

Material Specifications

Material Type Hot dip galvanized steel

Packaging and Weights

Included Clamp halves | Threaded rod

Packaging quantity 1

Regulatory Compliance/Certifications

Agency	Classification
CHINA-ROHS	Above maximum concentration value
ROHS	Compliant/Exempted
UK-ROHS	Compliant/Exempted

