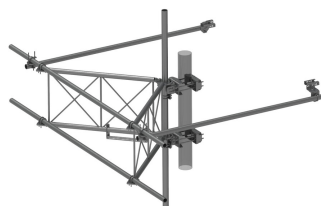


# SFG23RHDXL-13-B



G23RHDXL PIM OPTIMIZED SPACING High Capacity Sector Frame with extended 10' Spine for RRU Mounting & extended frame for sites requiring increased sector to sector antenna spacing. 2 7/8in OD x 13ft face. Antenna pipes sold separately.

## Product Classification

Product Type	High capacity Tower sector frame
Product Brand	PIM-guard
Product Series	G2

## General Specifications

Mounting	Angle 60°, 203.2 mm (8 in)   Straight or tapered legs up to 203.2 mm (8 in) OD
Patent Number	For patents see: <a href="http://www.cs-pat.com">www.cs-pat.com</a>
Pipe, quantity	0
Sectors, quantity	1
Tower Taper	Non-tapered   Tapered

## Dimensions

Height	838.2 mm   33 in
Face Width	3.962 m   13 ft
Width	3,962.4 mm   156 in
Face Support Pipe Diameter	73.025 mm   2.875 in
Mounting Diameter, maximum	203.2 mm   8 in
Mounting Diameter, minimum	38.1 mm   1.5 in
Pipe Outer Diameter	73.025 mm   2.875 in
Stand-off Distance	1,549.4 mm   61 in

## Material Specifications

Material Type	Hot dip galvanized steel
---------------	--------------------------

## Mechanical Specifications

Wind Rating	For Specifications, please contact your local ANDREW representative
Wind Rating Test Method	TIA/EIA-222-G

# SFG23RHDXL-13-B

---

## Packaging and Weights

Included	Frame   Stiff arms (2)   Tower attachment
Packaging quantity	1

## Regulatory Compliance/Certifications

Agency	Classification
CHINA-ROHS	Above maximum concentration value
ROHS	Compliant/Exempted
UK-ROHS	Compliant/Exempted



## \* Footnotes

Wind Rating	BWS—Base Wind Speed; FBC—Florida Building Code
-------------	--