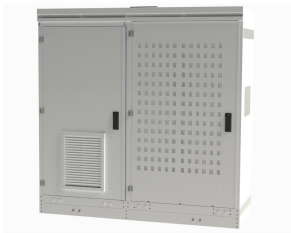


# A-VF1-EX01L

Base Product



## DerbyPlus Cabinet Ericsson Fitout 1

DerbyPlus cabinet is comprised of Derby and PSC cabinet. Derby Cabinet with rails and brackets fitted to accommodate up to 6 Ericsson Radios and PSC cabinet with internal racking to house up to 3 BBU's and transmission. The following features are included in the cabinet:

- 3U Eltek PSU (Plus Section)
- 2 No. 4kW Rectifiers (Plus Section)
- 1 No. 100Ah Battery (Plus Section)
- 12-way DCDU for Ericsson Radios (Plus Section)
- 3-way SPD Protected DCDU for Pole Mounted 4G Radios (Plus Section)
- Compression Gland for Cable Entry
- 3 No. GPS Windows (2 No. in Derby and 1 No. in PSC)

## Product Classification

Regional Availability	EMEA
Product Type	Outdoor cabinet

## General Specifications

Access	Front and Rear (PSC)   Single Door (Derby)
Accessories	Cable plate   External alarm connection   Hangers   In-ground root   Plinth
Cabinet Type	Baseband cabinet   Combiner cabinet   Power cabinet   Radio cabinet   Transmission cabinet
Cable Entry Location	Bottom
Color	Green (RAL 6009)   Light Gray (RAL 7035)   Others available at additional cost
Cooling	175 mm fan (1), (PSU)   175 mm fan (2), (Derby)
Door Security	Internal door contact for front door (Derby)   Internal door contact for front door (PSC)   Swing handle with European cylinder for front door (Derby)   Swing handle with European cylinder for front door (PSC)
Door Type, front	Non-removable with included key lock (Derby)   Non-removable with included key lock (PSC)
Door, quantity	3
Front Door Type	Single hinged
Lock Type	Internal latch for rear door (PSC)   Key lock for front door (Derby)   Key lock for front door (PSC)
Mounting	In-ground root   Plinth
Radios Included	None

# A-VF1-EX01L

---

## Dimensions

Height	1,721.866 mm   67.79 in
Width	1,899.92 mm   74.8 in
Depth	599.948 mm   23.62 in

## Material Specifications

Finish	Powder coated
Material Type	Galvanized steel

## Environmental Specifications

Qualification Standards	IP33 (Derby)   IP54 (PSC)
-------------------------	---------------------------

## Packaging and Weights

Weight, net	299.997 kg   661.38 lb
-------------	------------------------