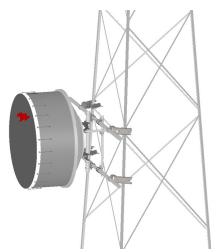


TF-M2-8



Tower Face Mount with dual 8 ft x 2-3/8 in OD face supports, includes pipe

Product Classification

Product Type Tower face mount

General Specifications

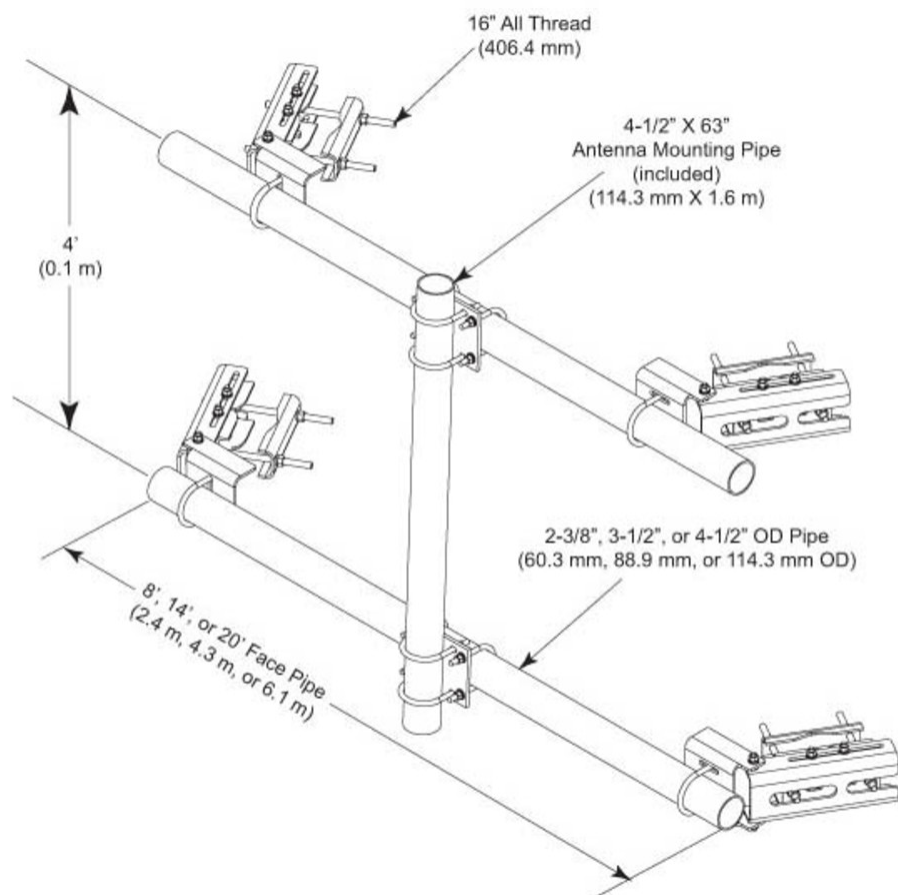
Mounting	Angle 60°, 203.2 mm (8 in) Angle 90°, 152.4 mm (6 in) Straight or tapered legs up to 203.2 mm (8 in) OD
Note	Effective Projected Area (EPA) calculated using horizontal booms, vertical pipe mount, and mounting brackets.
Pipe, quantity	1
Tower Taper	Non-tapered Tapered

Dimensions

Height	1,600.2 mm 63 in
Face Width	2,438 m 8 ft
Width	2,438.4 mm 96 in
Length	304.8 mm 12 in
Pipe Length	1,600.2 mm 63 in
Face Support Pipe Diameter	114.3 mm 4.5 in
Pipe Outer Diameter	114.3 mm 4.5 in

TF-M2-8

Outline Drawing



Material Specifications

Material Type	Hot dip galvanized steel
----------------------	--------------------------

Packaging and Weights

Included	Crossover plates Pipes Saddle mounts
Packaging quantity	1
Weight, net	215.456 kg 475 lb

Regulatory Compliance/Certifications

Agency	Classification
---------------	-----------------------

TF-M2-8

ISO 9001:2015 Designed, manufactured and/or distributed under this quality management system

Included Products

- MT-651-96 – Plain End Pipe, 2-3/8 in OD x 96 in .120" A500C 46Ksi
- MT-653-63 – Plain End Pipe, 4-1/2 in OD x 63 in x .237" A500C 46Ksi
- XP-2040 – Crossover Plate, joins 2-3/8 in to 4-1/2 in OD round members