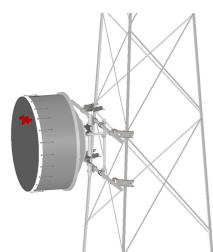


TF-M2-20



Tower Face Mount with dual 20 ft x 2-3/8 in OD face supports, includes pipe

Product Classification

Product Type Tower face mount

General Specifications

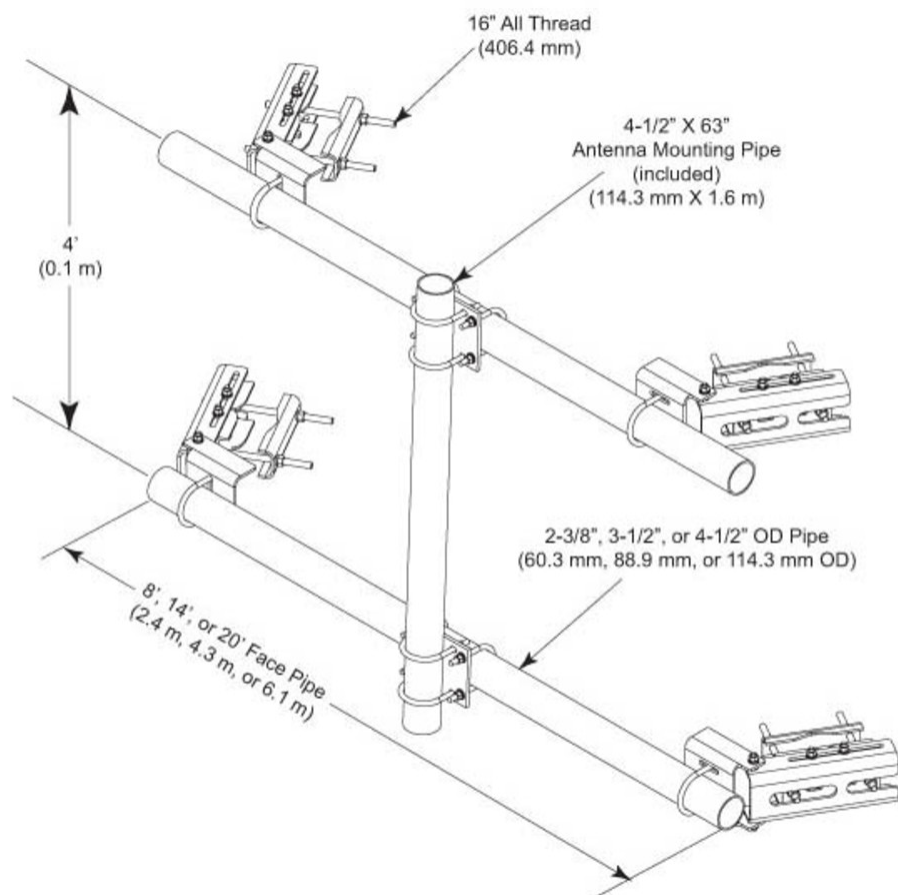
Mounting	Angle 60°, 203.2 mm (8 in) Angle 90°, 152.4 mm (6 in) Straight or tapered legs up to 203.2 mm (8 in) OD
Note	Effective Projected Area (EPA) calculated using horizontal booms, vertical pipe mount, and mounting brackets.
Pipe, quantity	1
Tower Taper	Non-tapered Tapered

Dimensions

Height	1,600.2 mm 63 in
Face Width	6.096 m 20 ft
Width	6,096 mm 240 in
Length	304.8 mm 12 in
Pipe Length	1,600.2 mm 63 in
Face Support Pipe Diameter	114.3 mm 4.5 in
Pipe Outer Diameter	114.3 mm 4.5 in

TF-M2-20

Outline Drawing



Material Specifications

Material Type Hot dip galvanized steel

Packaging and Weights

Included Crossover plates | Pipes | Saddle mounts

Packaging quantity 1

Weight, net 258.548 kg | 570 lb

Regulatory Compliance/Certifications

Agency **Classification**

TF-M2-20

ISO 9001:2015 Designed, manufactured and/or distributed under this quality management system

Included Products

- | | |
|------------|--|
| MT-537-170 | – Plain End Pipe, 2-3/8 in OD x 170 in .120" A500C 46Ksi |
| MT-538 | – Plain End Pipe, 2-3/8 in OD x 21 ft .120" A500C 46Ksi |
| MT-653-63 | – Plain End Pipe, 4-1/2 in OD x 63 in x .237" A500C 46Ksi |
| XP-2040 | – Crossover Plate, joins 2-3/8 in to 4-1/2 in OD round members |