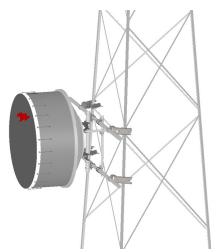


# TF-M2-20



Tower Face Mount with dual 20 ft x 2-3/8 in OD face supports, includes pipe

## Product Classification

**Product Type** Tower face mount

## General Specifications

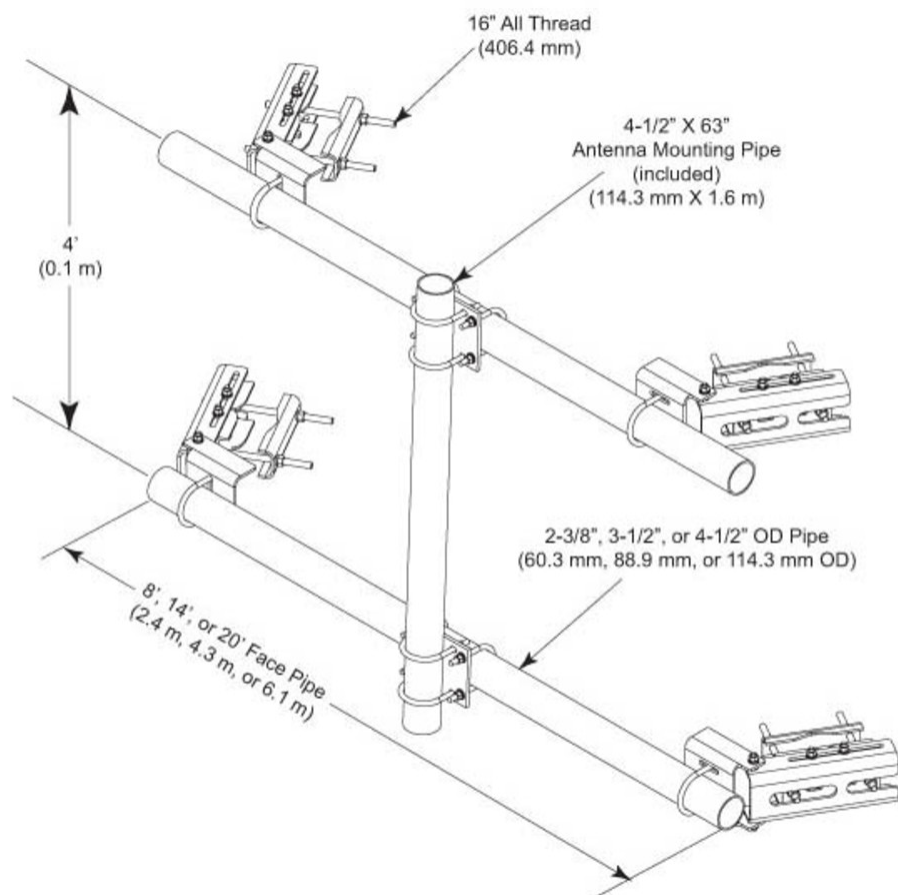
<b>Mounting</b>	Angle 60°, 203.2 mm (8 in)   Angle 90°, 152.4 mm (6 in)   Straight or tapered legs up to 203.2 mm (8 in) OD
<b>Note</b>	Effective Projected Area (EPA) calculated using horizontal booms, vertical pipe mount, and mounting brackets.
<b>Pipe, quantity</b>	1
<b>Tower Taper</b>	Non-tapered   Tapered

## Dimensions

<b>Height</b>	1,600.2 mm   63 in
<b>Face Width</b>	6.096 m   20 ft
<b>Width</b>	6,096 mm   240 in
<b>Length</b>	304.8 mm   12 in
<b>Pipe Length</b>	1,600.2 mm   63 in
<b>Face Support Pipe Diameter</b>	114.3 mm   4.5 in
<b>Pipe Outer Diameter</b>	114.3 mm   4.5 in

# TF-M2-20

## Outline Drawing



## Material Specifications

**Material Type** Hot dip galvanized steel

## Packaging and Weights

**Included** Crossover plates | Pipes | Saddle mounts

**Packaging quantity** 1

**Weight, net** 258.548 kg | 570 lb

## Regulatory Compliance/Certifications

**Agency** **Classification**

# TF-M2-20

---

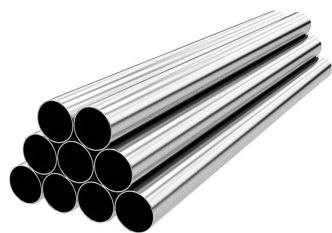
ISO 9001:2015

Designed, manufactured and/or distributed under this quality management system

## Included Products

- |            |  |
|------------|--|
| MT-537-170 | – Plain End Pipe, 2-3/8 in OD x 170 in .120" A500C 46Ksi       |
| MT-538     | – Plain End Pipe, 2-3/8 in OD x 21 ft .120" A500C 46Ksi        |
| MT-653-63  | – Plain End Pipe, 4-1/2 in OD x 63 in x .237" A500C 46Ksi      |
| XP-2040    | – Crossover Plate, joins 2-3/8 in to 4-1/2 in OD round members |

# MT-537-170



Plain End Pipe, 2-3/8 in OD x 170 in .120" A500C 46Ksi

A500 46 ksi steel

## Product Classification

**Product Type** Plain end pipe

## General Specifications

**Pipe, quantity** 1

## Dimensions

**Height** 60.96 mm | 2.4 in  
**Width** 60.96 mm | 2.4 in  
**Length** 4318 mm | 170 in  
**Pipe Length** 4318 mm | 170 in  
**Pipe Outer Diameter** 60.96 mm | 2.4 in

## Material Specifications

**Material Type** Hot dip galvanized steel

## Packaging and Weights

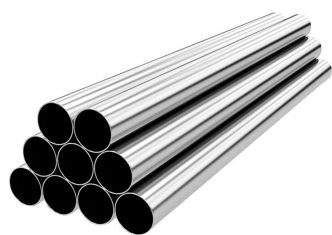
**Included** Pipe  
**Packaging quantity** 1  
**Weight, net** 23.9 kg | 52.69 lb

## Regulatory Compliance/Certifications

Agency	Classification
ISO 9001:2015	Designed, manufactured and/or distributed under this quality management system

# MT-538

---



Plain End Pipe, 2-3/8 in OD x 21 ft .120" A500C 46Ksi

## Product Classification

**Product Type** Plain end pipe

## General Specifications

**Pipe, quantity** 1

## Dimensions

**Height** 60.96 mm | 2.4 in  
**Width** 60.96 mm | 2.4 in  
**Length** 6,400.8 mm | 252 in  
**Pipe Length** 6,400.8 mm | 252 in  
**Pipe Outer Diameter** 60.325 mm | 2.375 in  
**Material Thickness** 3.048 mm | 0.12 in

## Material Specifications

**Material Type** A500 | Hot dip galvanized steel  
**Material Grade** C  
**Material Strength** 46 KSI

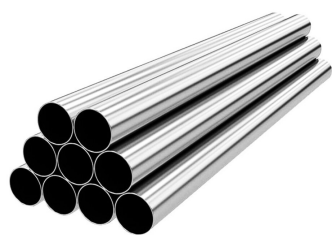
## Packaging and Weights

**Included** Pipe  
**Packaging quantity** 1  
**Weight, net** 27 kg | 59.525 lb

## Regulatory Compliance/Certifications

Agency	Classification
ISO 9001:2015	Designed, manufactured and/or distributed under this quality management system

# MT-653-63



Plain End Pipe, 4-1/2 in OD x 63 in x .237" A500C 46Ksi

## Product Classification

**Product Type** Plain end pipe

## General Specifications

**Pipe, quantity** 1

## Dimensions

**Height** 114.3 mm | 4.5 in  
**Width** 114.3 mm | 4.5 in  
**Length** 1,600.2 mm | 63 in  
**Pipe Length** 1,600.2 mm | 63 in  
**Pipe Outer Diameter** 114.3 mm | 4.5 in  
**Material Thickness** 6.02 mm | 0.237 in

## Material Specifications

**Material Type** A500 | Hot dip galvanized steel  
**Material Grade** C  
**Material Strength** 46 KSI

## Packaging and Weights

**Included** Pipe  
**Packaging quantity** 1  
**Weight, net** 25.9 kg | 57.1 lb

## Regulatory Compliance/Certifications

Agency	Classification
ISO 9001:2015	Designed, manufactured and/or distributed under this quality management system

# XP-2040



Crossover Plate, joins 2-3/8 in to 4-1/2 in OD round members

## Product Classification

**Product Type**                      Clamp plate

## General Specifications

**Mounting**                              Crossover plate

## Dimensions

**Mounting Diameter, maximum**      101.6 mm | 4 in  
**Mounting Diameter, minimum**      60.325 mm | 2.375 in  
**Material Thickness**                      9.525 mm | 0.375 in

## Material Specifications

**Material Type**                          Hot dip galvanized steel

## Packaging and Weights

**Included**                                  Plates | U-bolts  
**Packaging quantity**                      1

## Regulatory Compliance/Certifications

Agency	Classification
ISO 9001:2015	Designed, manufactured and/or distributed under this quality management system