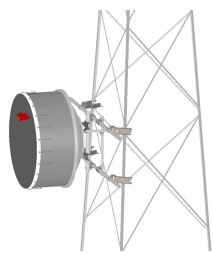


# TF-M2-14



Tower Face Mount with dual 14 ft x 2-3/8 in OD face pipe supports, includes pipe

## Product Classification

**Product Type** Tower face mount

## General Specifications

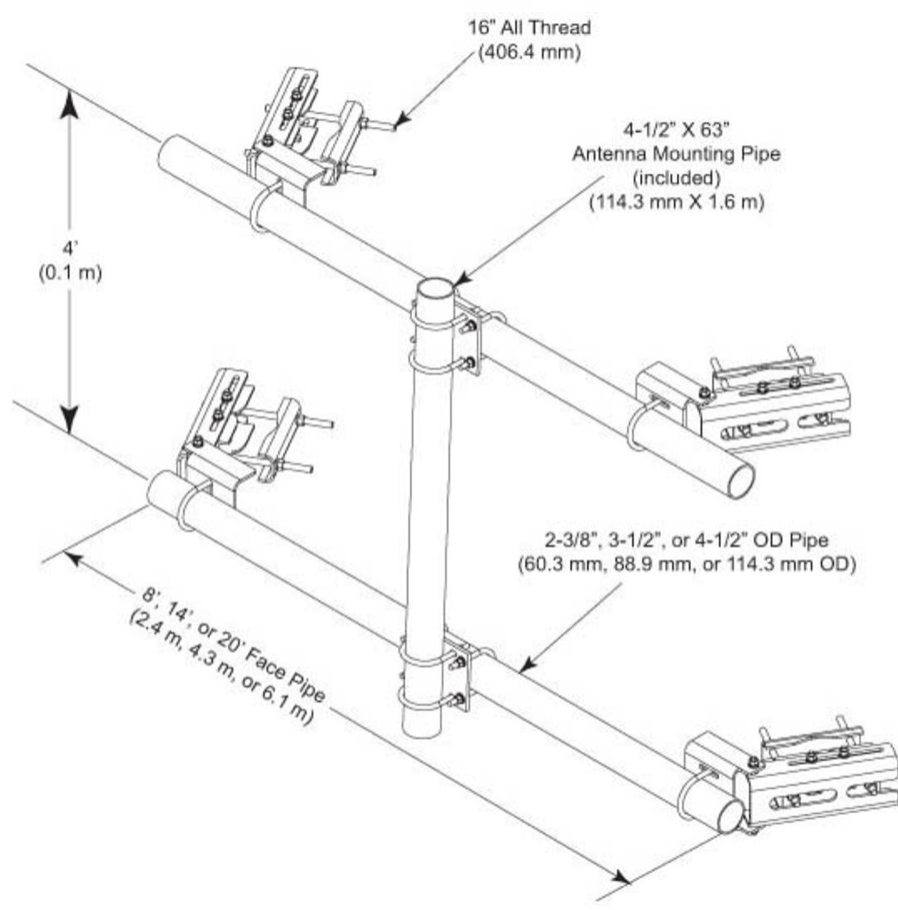
<b>Mounting</b>	Angle 60°, 203.2 mm (8 in)   Angle 90°, 152.4 mm (6 in)   Straight or tapered legs up to 203.2 mm (8 in) OD
<b>Note</b>	Effective Projected Area (EPA) calculated using horizontal booms, vertical pipe mount, and mounting brackets.
<b>Pipe, quantity</b>	1
<b>Tower Taper</b>	Non-tapered   Tapered

## Dimensions

<b>Height</b>	1,600.2 mm   63 in
<b>Face Width</b>	4.267 m   14 ft
<b>Width</b>	4,267.2 mm   168 in
<b>Length</b>	304.8 mm   12 in
<b>Pipe Length</b>	1,600.2 mm   63 in
<b>Face Support Pipe Diameter</b>	114.3 mm   4.5 in
<b>Pipe Outer Diameter</b>	114.3 mm   4.5 in

# TF-M2-14

## Outline Drawing



## Material Specifications

**Material Type** Hot dip galvanized steel

## Packaging and Weights

**Included** Crossover plates | Pipes | Saddle mounts

**Packaging quantity** 1

**Weight, net** 238.136 kg | 525 lb

## Regulatory Compliance/Certifications

Agency	Classification
--------	----------------

# TF-M2-14

---

ISO 9001:2015      Designed, manufactured and/or distributed under this quality management system

## Included Products

- |            |  |
|------------|--|
| MT-537-170 | – Plain End Pipe, 2-3/8 in OD x 170 in .120" A500C 46Ksi       |
| MT-653-63  | – Plain End Pipe, 4-1/2 in OD x 63 in x .237" A500C 46Ksi      |
| XP-2040    | – Crossover Plate, joins 2-3/8 in to 4-1/2 in OD round members |