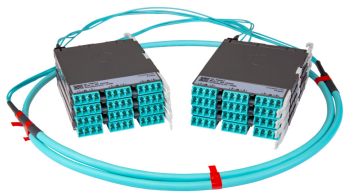


PPLUQV8LCLC8



Propel ULL Multimode OM5 Cabled Module, 1x4 duplex LC Propel module on End A to 1x4 duplex LC Propel Module on End B, 8 fiber Plenum patch cord cable, Method B Enhanced

- This component requires 2 of the 12 lanes on the Propel Panel blade
- Ultra-low loss (ULL) with Method B Enhanced polarity
- End A module can be installed from rear of panel
- Serialized QR code provides easy access to factory optical test results

Product Classification

Regional Availability	Asia Australia/New Zealand EMEA Latin America North America
Portfolio	SYSTIMAX®
Product Type	Fiber cabled module
Product Brand	Propel
Product Series	PPL
Ordering Note	End B module is the same module as End A Modules with patch cord cable are single subunit, and have no additional outer jacket

General Specifications

Configuration Type	PROPEL Module to PROPEL Module
Cable Color	Lime green
Cable Type	Patch cord Plenum
Interface, front	LC/UPC
Interface Feature, front	Duplex Shuttered
Interface Color, front	Lime green
Interface, rear	LC/UPC
Interface Feature, rear	Duplex Shuttered
Interface Color, rear	Lime green
Module Size, end A	8 fiber
Module Size, end B	8 fiber
Module Quantity, end A	1
Module Quantity, end B	1
Polarity	Method B Enhanced (ULL)

PPLUQV8LCLC8

Total Fibers, quantity	8
Total Ports, quantity, front	4
Total Ports, quantity, rear	4

Dimensions

Height	11 mm 0.433 in
Width	65 mm 2.559 in
Depth	170 mm 6.693 in
Breakout Length, end B	23 in
Cable Assembly Length Range (m)	1 – 400
Cable Assembly Length Range (ft)	2 – 999

Ordering Tree



Optical Specifications

Fiber Mode	Multimode
Fiber Type	OM5
Insertion Loss, maximum	0.35 dB

Environmental Specifications

Qualification Standards	IEC 61753-1 TIA-568.3-D
Safety Standard	c-UL-us

Packaging and Weights

Packaging quantity	1
--------------------	---

Regulatory Compliance/Certifications

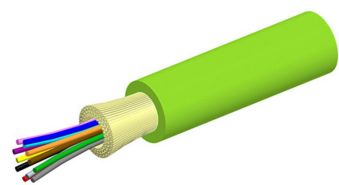
PPLUQV8LCLC8

Agency	Classification
CHINA-ROHS	Above maximum concentration value
ROHS	Compliant/Exempted
UK-ROHS	Compliant/Exempted



Included Products

760253105 P-008-MP-5G-F20LM	– Fiber indoor cable, LazrSPEED® Plenum MPO Light Duty for Patchcords, 8 fiber, Multimode OM5, Feet jacket marking, Lime green jacket color
--------------------------------	---



Fiber indoor cable, LazrSPEED® Plenum MPO Light Duty for Patchcords, 8 fiber, Multimode OM5, Feet jacket marking, Lime green jacket color

Product Classification

Regional Availability	Asia Australia/New Zealand Latin America Middle East/Africa North America
Portfolio	CommScope®
Product Type	Fiber indoor cable
Product Series	P-MP

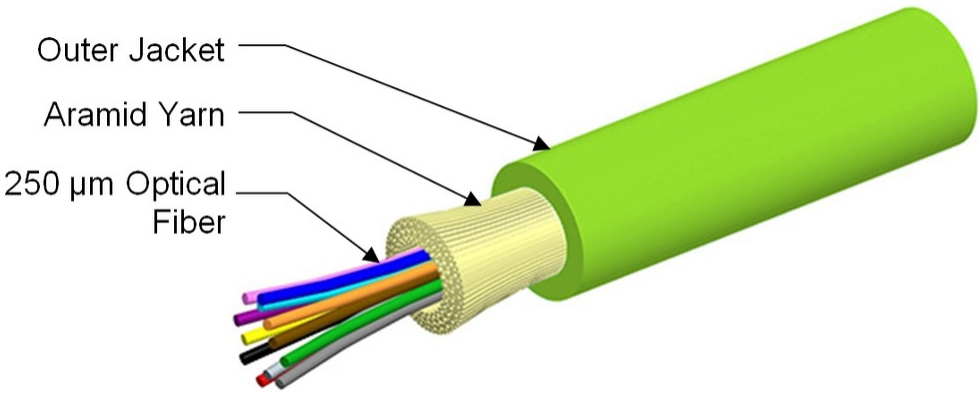
General Specifications

Cable Type	MPO trunk cable
Construction Type	Non-armored
Subunit Type	Gel-free
Jacket Color	Lime green
Jacket Marking	Feet
Total Fiber Count	8

Dimensions

Diameter Over Jacket	2 mm 0.079 in
----------------------	-----------------

Representative Image



Mechanical Specifications

Minimum Bend Radius, loaded	38 mm 1.496 in
Minimum Bend Radius, unloaded	16 mm 0.63 in
Tensile Load, long term, maximum	33 N 7.419 lbf
Tensile Load, short term, maximum	111 N 24.954 lbf
Compression	4 N/mm 22.841 lb/in
Compression Test Method	FOTP-41 IEC 60794-1 E3
Flex	300 cycles
Flex Test Method	FOTP-104 IEC 60794-1 E6
Impact	0.74 N-m 6.55 in lb
Impact Test Method	FOTP-25 IEC 60794-1 E4
Strain	See long and short term tensile loads
Strain Test Method	FOTP-33 IEC 60794-1 E1
Twist	10 cycles
Twist Test Method	FOTP-85 IEC 60794-1 E7
Vertical Rise, maximum	500 m 1,640.42 ft

Optical Specifications

Fiber Type	OM5, LazrSPEED® wideband OM5, LazrSPEED® wideband
-------------------	---

Environmental Specifications

Installation temperature	0 °C to +70 °C (+32 °F to +158 °F)
Operating Temperature	0 °C to +70 °C (+32 °F to +158 °F)
Storage Temperature	-40 °C to +70 °C (-40 °F to +158 °F)
Cable Qualification Standards	ANSI/ICEA S-83-596 Telcordia GR-409
Environmental Space	Plenum
Flame Test Listing	NEC OFNP (ETL) and c(ETL)
Flame Test Method	NFPA 130 NFPA 262

Environmental Test Specifications

Heat Age	0 °C to +85 °C (+32 °F to +185 °F)
Heat Age Test Method	IEC 60794-1 F9
Low High Bend	0 °C to +70 °C (+32 °F to +158 °F)

Low High Bend Test Method	FOTP-37 IEC 60794-1 E11
Temperature Cycle	0 °C to +70 °C (+32 °F to +158 °F)
Temperature Cycle Test Method	FOTP-3 IEC 60794-1 F1

Packaging and Weights

Cable weight	4.2 kg/km 2.822 lb/kft
--------------	--------------------------

* Footnotes

Operating Temperature Specification applicable to non-terminated bulk fiber cable