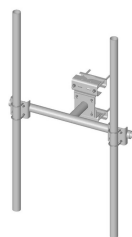


# SF-DPM35-96



Co-location Dual Pipe Mount Kit; includes (2) 3-1/2 in OD x 96 in pipes

## Product Classification

**Product Type** Co-location dual pipe mount kit

## General Specifications

**Mounting** Angle 60°, 203.2 mm (8 in) | Angle 90°, 152.4 mm (6 in) | Straight or tapered legs up to 203.2 mm (8 in) OD

**Note** Two 72 in x 8 in panel antenna per sector

**Pipe, quantity** 2

**Tower Taper** Non-tapered | Tapered

## Dimensions

**Height** 2,438.4 mm | 96 in

**Face Width** 1.463 m | 4.8 ft

**Width** 1,447.8 mm | 57 in

**Length** 0.396 m | 1.3 ft

**Pipe Length** 2,438.4 mm | 96 in

**Face Support Pipe Diameter** 88.9 mm | 3.5 in

**Mounting Diameter, maximum** 203.2 mm | 8 in

**Mounting Diameter, minimum** 0 mm | 0 in

**Pipe Outer Diameter** 88.9 mm | 3.5 in

**Stand-off Distance** 391.16 mm | 15.4 in

## Material Specifications

**Material Type** Hot dip galvanized steel

## Mechanical Specifications

**Wind Rating** 120 mph (BWS) at 150 ft AGL | 140 mph (3-second gust) at 150 ft AGL using Exposure D per FBC

**Wind Rating Test Method** TIA/EIA-222

# SF-DPM35-96

---

## Packaging and Weights

Included	Clamps   Frame   Pipe mounts   Pipes   Saddle mounts
Packaging quantity	1
Weight, net	152 kg   335.102 lb

## Regulatory Compliance/Certifications

Agency	Classification
ISO 9001:2015	Designed, manufactured and/or distributed under this quality management system

## \* Footnotes

Wind Rating	BWS—Base Wind Speed; FBC—Florida Building Code
-------------	--