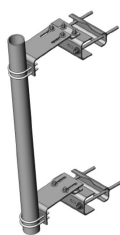


# PM-SU4L-63



Universal Adjustable Sliding Pipe Mount Kit, 4-1/2 in OD x 63 in pipe, 6–14 in stand-off

## Product Classification

**Product Type** Pipe mount

## General Specifications

<b>Mounting</b>	Angle 60°, 203.2 mm (8 in)   Angle 90°, 152.4 mm (6 in)   Straight or tapered legs up to 203.2 mm (8 in) OD
<b>Note</b>	One 8 ft microwave antenna with stiff arm
<b>Pipe, quantity</b>	1
<b>Tower Taper</b>	Non-tapered   Tapered

## Dimensions

<b>Height</b>	1,600.2 mm   63 in
<b>Width</b>	304.8 mm   12 in
<b>Length</b>	304.8 mm   12 in
<b>Pipe Length</b>	1,600.2 mm   63 in
<b>Mounting Diameter, maximum</b>	203.2 mm   8 in
<b>Mounting Diameter, minimum</b>	0 mm   0 in
<b>Pipe Outer Diameter</b>	114.3 mm   4.5 in
<b>Stand-off Distance</b>	355.6 mm   14 in
<b>Stand-off Distance, adjustable</b>	6–14 in   15.2–35.6 cm

## Material Specifications

**Material Type** Hot dip galvanized steel

## Mechanical Specifications

<b>Wind Rating</b>	120 mph (BWS) at 150 ft AGL
<b>Wind Rating Test Method</b>	TIA/EIA-222

# PM-SU4L-63

---

## Packaging and Weights

Included	Pipe   Sliding pipe mount brackets   Universal saddle mount
Packaging quantity	1
Weight, net	65.8 kg   145.064 lb

## Regulatory Compliance/Certifications

Agency	Classification
ISO 9001:2015	Designed, manufactured and/or distributed under this quality management system

## \* Footnotes

Wind Rating	BWS—Base Wind Speed; FBC—Florida Building Code
-------------	--