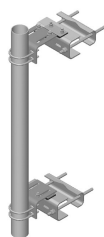


PM-SU4-96



Universal Sliding Pipe Mount Kit for 4-1/2 in OD x 96 in pipe

Product Classification

Product Type Pipe mount

General Specifications

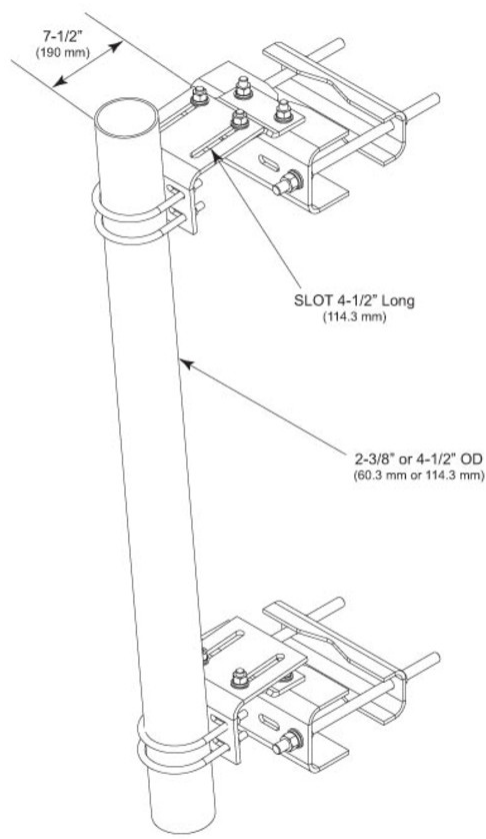
Mounting	Angle 60°, 203.2 mm (8 in) Angle 90°, 152.4 mm (6 in) Straight or tapered legs up to 203.2 mm (8 in) OD
Note	One 96 in x 8 in panel antenna per sector
Pipe, quantity	1
Tower Taper	Tapered

Dimensions

Height	2,438.4 mm 96 in
Width	304.8 mm 12 in
Length	304.8 mm 12 in
Pipe Length	2,438.4 mm 96 in
Mounting Diameter, maximum	203.2 mm 8 in
Mounting Diameter, minimum	0 mm 0 in
Pipe Outer Diameter	114.3 mm 4.5 in

PM-SU4-96

Outline Drawing



Material Specifications

Material Type Hot dip galvanized steel

Mechanical Specifications

Wind Rating 120 mph (BWS) at 150 ft AGL

Wind Rating Test Method TIA/EIA-222

Packaging and Weights

Included Pipe | Sliding pipe mount brackets | Universal saddle mount

Packaging quantity 1

PM-SU4-96

Weight, net 76.7 kg | 169.094 lb

Regulatory Compliance/Certifications

Agency	Classification
ISO 9001:2015	Designed, manufactured and/or distributed under this quality management system

Included Products

MT-654-96	– Plain End Pipe, 4-1/2 in OD x 96 in x .188" A500C 46Ksi
PM-SL4	– Universal Taper Pipe Mount Slider Bracket for 4-1/2 in OD pipe
SM-U2080	– Universal Saddle Mount for straight or tapered legs up to 8 in OD, 8 in angle 60°, or 6 in angle 90° (Kit of 2)

* Footnotes

Wind Rating	BWS—Base Wind Speed; FBC—Florida Building Code
--------------------	--