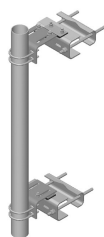


PM-SU4-96



Universal Sliding Pipe Mount Kit for 4-1/2 in OD x 96 in pipe

Product Classification

Product Type Pipe mount

General Specifications

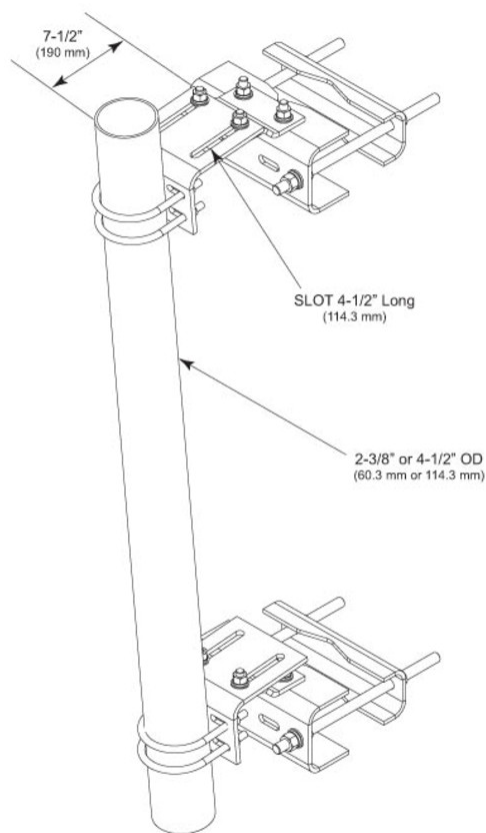
Mounting	Angle 60°, 203.2 mm (8 in) Angle 90°, 152.4 mm (6 in) Straight or tapered legs up to 203.2 mm (8 in) OD
Note	One 96 in x 8 in panel antenna per sector
Pipe, quantity	1
Tower Taper	Tapered

Dimensions

Height	2,438.4 mm 96 in
Width	304.8 mm 12 in
Length	304.8 mm 12 in
Pipe Length	2,438.4 mm 96 in
Mounting Diameter, maximum	203.2 mm 8 in
Mounting Diameter, minimum	0 mm 0 in
Pipe Outer Diameter	114.3 mm 4.5 in

PM-SU4-96

Outline Drawing



Material Specifications

Material Type Hot dip galvanized steel

Mechanical Specifications

Wind Rating 120 mph (BWS) at 150 ft AGL

Wind Rating Test Method TIA/EIA-222

Packaging and Weights

Included Pipe | Sliding pipe mount brackets | Universal saddle mount

Packaging quantity 1

PM-SU4-96

Weight, net 76.7 kg | 169.094 lb

Regulatory Compliance/Certifications

Agency	Classification
ISO 9001:2015	Designed, manufactured and/or distributed under this quality management system

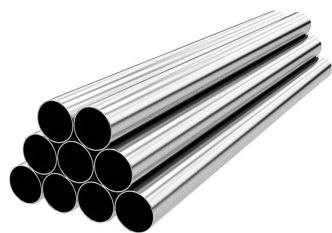
Included Products

MT-654-96	– Plain End Pipe, 4-1/2 in OD x 96 in x .188" A500C 46Ksi
PM-SL4	– Universal Taper Pipe Mount Slider Bracket for 4-1/2 in OD pipe
SM-U2080	– Universal Saddle Mount for straight or tapered legs up to 8 in OD, 8 in angle 60°, or 6 in angle 90° (Kit of 2)

* Footnotes

Wind Rating	BWS—Base Wind Speed; FBC—Florida Building Code
--------------------	--

MT-654-96



Plain End Pipe, 4-1/2 in OD x 96 in x .188" A500C 46Ksi

Product Classification

Product Type Plain end pipe

General Specifications

Pipe, quantity 1

Dimensions

Height 114.3 mm | 4.5 in
Width 114.3 mm | 4.5 in
Length 2,438.4 mm | 96 in
Pipe Length 2,438.4 mm | 96 in
Pipe Outer Diameter 114.3 mm | 4.5 in
Material Thickness 4.775 mm | 0.188 in

Material Specifications

Material Type A500 | Hot dip galvanized steel
Material Grade C
Material Strength 46 KSI

Packaging and Weights

Included Pipe
Packaging quantity 1
Weight, net 31 kg | 68.343 lb

Regulatory Compliance/Certifications

Agency	Classification
CHINA-ROHS	Above maximum concentration value
ISO 9001:2015	Designed, manufactured and/or distributed under this quality management system

MT-654-96

ROHS	Compliant/Exempted
UK-ROHS	Compliant/Exempted



PM-SL4



Universal Taper Pipe Mount Slider Bracket for 4-1/2 in OD pipe

Product Classification

Product Type Pipe mount

General Specifications

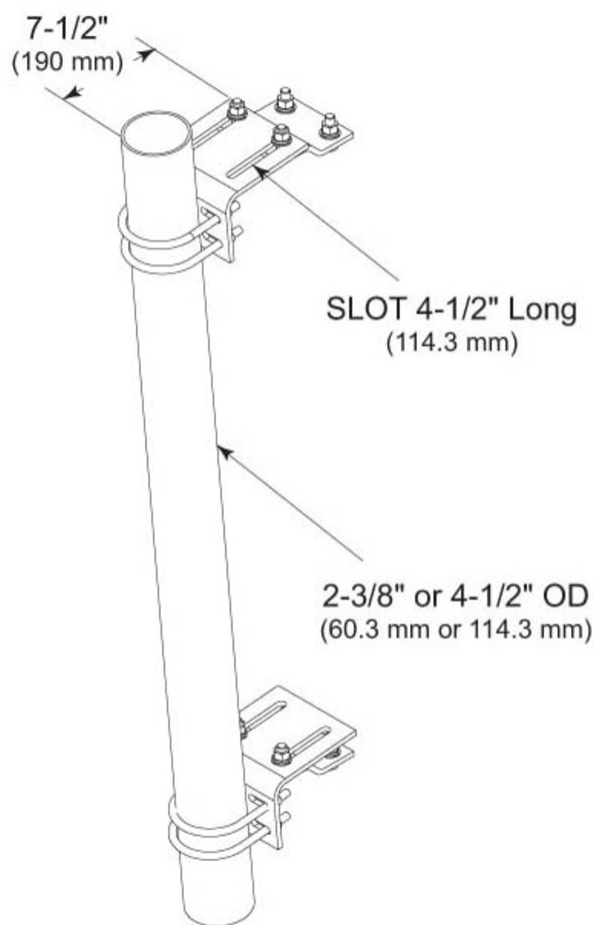
- Mounting** Saddle mounts
- Note** One 96 in x 8 in panel antenna per pipe mount
- Pipe, quantity** 0
- Tower Taper** Tapered

Dimensions

- Height** 127 mm | 5 in
- Width** 152.4 mm | 6 in
- Length** 304.8 mm | 12 in
- Pipe Outer Diameter** 114.3 mm | 4.5 in

PM-SL4

Outline Drawing



Material Specifications

Material Type Hot dip galvanized steel

Mechanical Specifications

Wind Rating 120 mph (BWS) at 150 ft AGL

Wind Rating Test Method TIA/EIA-222

Packaging and Weights

Included Hardware | Sliding pipe mount brackets

Packaging quantity 2

PM-SL4

Weight, net 14.2 kg | 31.306 lb

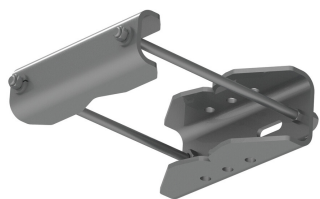
Regulatory Compliance/Certifications

Agency	Classification
ISO 9001:2015	Designed, manufactured and/or distributed under this quality management system
REACH-SVHC	Compliant as per SVHC revision on www.andrew.com/ProductCompliance
ROHS	Compliant
UK-ROHS	Compliant

* Footnotes

Wind Rating BWS—Base Wind Speed; FBC—Florida Building Code

SM-U2080



Universal Saddle Mount for straight or tapered legs up to 8 in OD, 8 in angle 60°, or 6 in angle 90° (Kit of 2)

Product Classification

Product Type Saddle mount

General Specifications

Mounting Angle 60°, 203.2 mm (8 in) | Angle 90°, 152.4 mm (6 in) | Straight or tapered legs up to 203.2 mm (8 in) OD

Tower Taper Non-tapered

Dimensions

Height 152.4 mm | 6 in

Width 279.4 mm | 11 in

Length 254 mm | 10 in

Mounting Diameter, maximum 203.2 mm | 8 in

Mounting Diameter, minimum 0 mm | 0 in

Material Specifications

Material Type Hot dip galvanized steel

Packaging and Weights

Included Mount

Packaging quantity 2

Weight, net 22.7 kg | 50.045 lb

Regulatory Compliance/Certifications

Agency	Classification
CHINA-ROHS	Above maximum concentration value
ISO 9001:2015	Designed, manufactured and/or distributed under this quality management system
ROHS	Compliant/Exempted
UK-ROHS	Compliant/Exempted

SM-U2080

