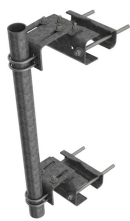


# PM-SU35-48



Universal Pipe Mount Kit for 3-1/2 in OD x 48 in pipe

## Product Classification

**Product Type** Pipe mount

## General Specifications

**Mounting** Angle 60°, 203.2 mm (8 in) | Angle 90°, 152.4 mm (6 in) | Straight or tapered legs up to 203.2 mm (8 in) OD

**Pipe, quantity** 1

**Tower Taper** Tapered

## Dimensions

**Height** 1,219.2 mm | 48 in

**Width** 304.8 mm | 12 in

**Length** 304.8 mm | 12 in

**Pipe Length** 1,219.2 mm | 48 in

**Mounting Diameter, maximum** 203.2 mm | 8 in

**Mounting Diameter, minimum** 0 mm | 0 in

**Pipe Outer Diameter** 88.9 mm | 3.5 in

## Material Specifications

**Material Type** Hot dip galvanized steel

## Mechanical Specifications

**Wind Rating** 120 mph (BWS) at 100 ft AGL

**Wind Rating Test Method** TIA/EIA-222

## Packaging and Weights

**Included** Brackets | Hardware | Pipe

**Packaging quantity** 1

# PM-SU35-48

---

**Weight, net** 50.8 kg | 111.995 lb

\* Footnotes

**Wind Rating** BWS—Base Wind Speed; FBC—Florida Building Code