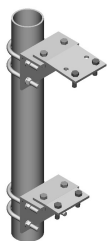


# PM-412T-48



Adjustable Tapered Pipe Mount, 4-1/2 in OD x 48 in

## Product Classification

**Product Type** Pipe mount

## General Specifications

**Mounting** Saddle mounts

**Note** One 96 in x 8 in panel antenna per pipe mount

**Pipe, quantity** 1

**Tower Taper** Tapered

## Dimensions

**Height** 1,219.2 mm | 48 in

**Width** 152.4 mm | 6 in

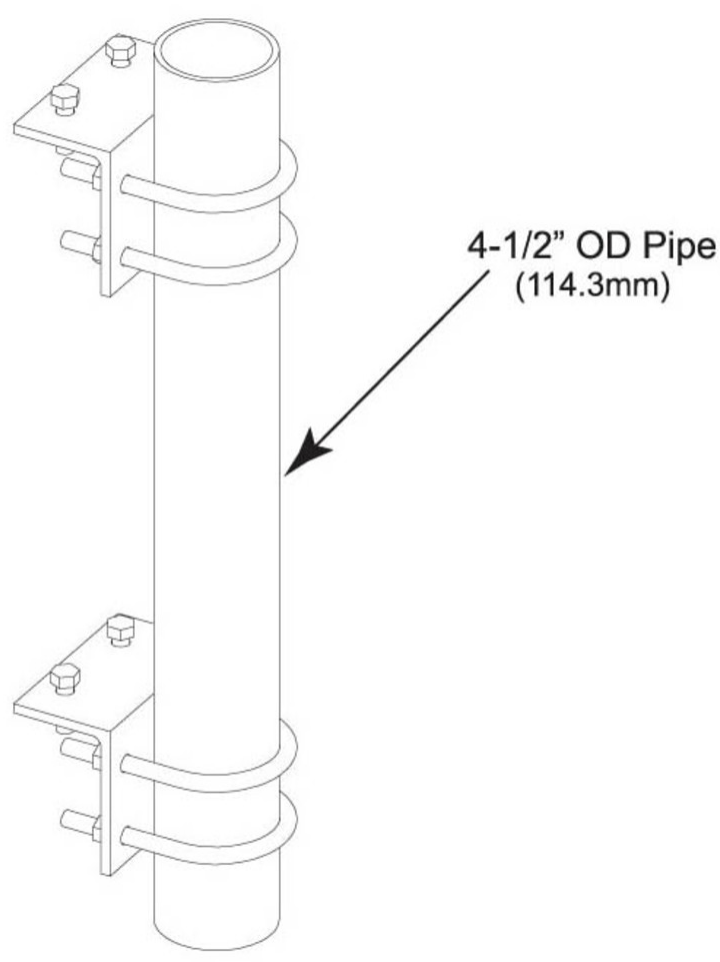
**Length** 152.4 mm | 6 in

**Pipe Length** 1,219.2 mm | 48 in

**Pipe Outer Diameter** 114.3 mm | 4.5 in

# PM-412T-48

## Outline Drawing



## Material Specifications

**Material Type** Hot dip galvanized steel

## Mechanical Specifications

**Wind Rating** 120 mph (BWS) at 150 ft AGL

**Wind Rating Test Method** TIA/EIA-222

## Packaging and Weights

**Included** Brackets | Hardware | Pipe

**Packaging quantity** 1

# PM-412T-48

---

**Weight, net** 20 kg | 44.092 lb

## Regulatory Compliance/Certifications

Agency	Classification
ISO 9001:2015	Designed, manufactured and/or distributed under this quality management system

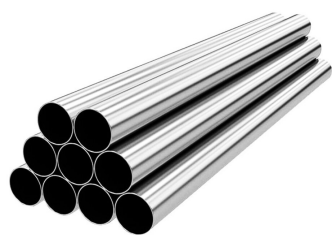
## Included Products

MT-653	– Plain End Pipe, 4-1/2 in OD x 48 in x .188" A500C 46Ksi
PM-TK	– Pipe Mount Taper Kit

## \* Footnotes

<b>Wind Rating</b>	BWS—Base Wind Speed; FBC—Florida Building Code
--------------------	--

# MT-653



Plain End Pipe, 4-1/2 in OD x 48 in x .188" A500C 46Ksi

## Product Classification

**Product Type** Plain end pipe

## General Specifications

**Pipe, quantity** 1

## Dimensions

**Height** 114.3 mm | 4.5 in  
**Width** 114.3 mm | 4.5 in  
**Length** 1,219.2 mm | 48 in  
**Pipe Length** 1,219.2 mm | 48 in  
**Pipe Outer Diameter** 114.3 mm | 4.5 in  
**Material Thickness** 4.775 mm | 0.188 in

## Material Specifications

**Material Type** A500 | Hot dip galvanized steel  
**Material Grade** C  
**Material Strength** 46 KSI

## Packaging and Weights

**Included** Pipe  
**Packaging quantity** 1  
**Weight, net** 16 kg | 35.274 lb

## Regulatory Compliance/Certifications

Agency	Classification
CHINA-ROHS	Below maximum concentration value
ISO 9001:2015	Designed, manufactured and/or distributed under this quality management system

# MT-653

---

REACH-SVHC	Compliant as per SVHC revision on <a href="http://www.andrew.com/ProductCompliance">www.andrew.com/ProductCompliance</a>
ROHS	Compliant
UK-ROHS	Compliant





Pipe Mount Taper Kit

## Product Classification

**Product Type** Pipe mount kit

## General Specifications

**Mounting** Saddle mounts

**Tower Taper** Tapered

## Dimensions

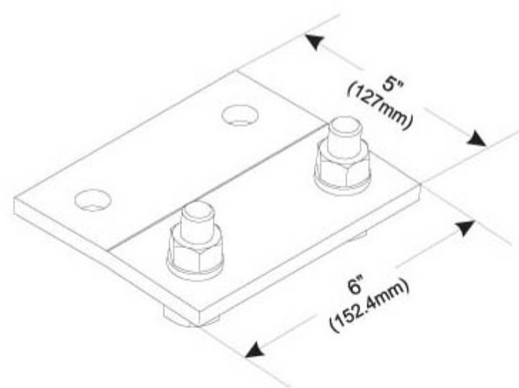
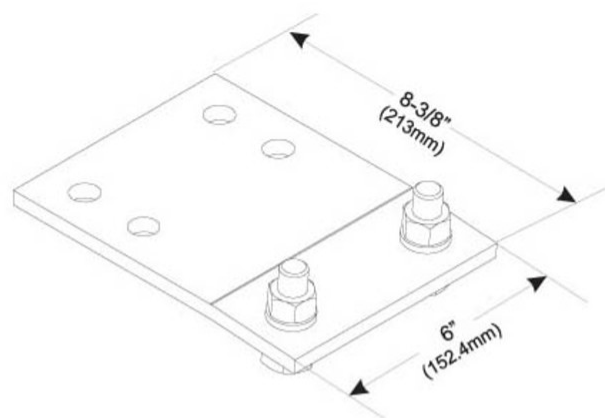
**Height** 25.4 mm | 1 in

**Width** 152.4 mm | 6 in

**Length** 152.4 mm | 6 in

# PM-TK

## Outline Drawing



## Material Specifications

**Material Type** Hot dip galvanized steel

## Packaging and Weights

**Included** Hardware | Plates

**Packaging quantity** 1

**Weight, net** 4.2 kg | 9.259 lb

## Regulatory Compliance/Certifications

Agency	Classification
--------	----------------

# PM-TK

---

ISO 9001:2015	Designed, manufactured and/or distributed under this quality management system
REACH-SVHC	Compliant as per SVHC revision on <a href="http://www.andrew.com/ProductCompliance">www.andrew.com/ProductCompliance</a>
ROHS	Compliant
UK-ROHS	Compliant