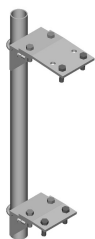


# PM-238T-96



Adjustable Tapered Pipe Mount, 2-3/8 in OD x 96 in

## Product Classification

**Product Type** Pipe mount

## General Specifications

**Mounting** Saddle mounts

**Note** One 96 in x 8 in panel antenna per pipe mount

**Pipe, quantity** 1

**Tower Taper** Tapered

## Dimensions

**Height** 2,438.4 mm | 96 in

**Width** 152.4 mm | 6 in

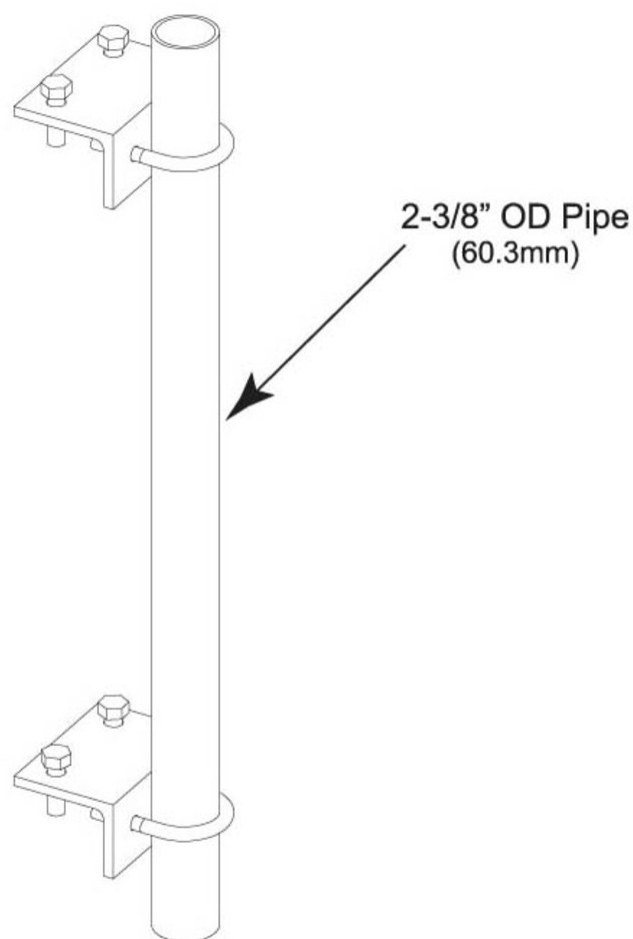
**Length** 152.4 mm | 6 in

**Pipe Length** 2,438.4 mm | 96 in

**Pipe Outer Diameter** 60.96 mm | 2.4 in

# PM-238T-96

## Outline Drawing



## Material Specifications

**Material Type** Hot dip galvanized steel

## Mechanical Specifications

**Wind Rating** 120 mph (BWS) at 150 ft AGL

**Wind Rating Test Method** TIA/EIA-222

## Packaging and Weights

**Included** Brackets | Hardware | Pipe

**Packaging quantity** 1

# PM-238T-96

---

**Weight, net** 15.2 kg | 33.51 lb

## Regulatory Compliance/Certifications

| Agency        | Classification   |
|---------------|--|
| ISO 9001:2015 | Designed, manufactured and/or distributed under this quality management system |

## Included Products

|           |   |
|-----------|---|
| MT-651-96 | – Plain End Pipe, 2-3/8 in OD x 96 in .120" A500C 46Ksi |
| PM-TK     | – Pipe Mount Taper Kit                                  |

## \* Footnotes

|                    |  |
|--------------------|--|
| <b>Wind Rating</b> | BWS—Base Wind Speed; FBC—Florida Building Code |
|--------------------|--|