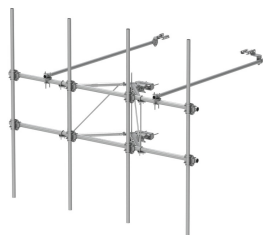


SFG22HD-14-4-126



G22HD High Capacity Sector Frame with 2 7/8in OD x 14.5ft face.
Includes four 2 3/8in OD x 126in antenna pipes.

Product Classification

| | |
|----------------|----------------------------------|
| Product Type | High capacity Tower sector frame |
| Product Series | G2 |

General Specifications

| | |
|-------------------|--|
| Application | 4G LTE antenna/radio mount |
| Mounting | Angle 60°, 203.2 mm (8 in) Straight or tapered legs up to 203.2 mm (8 in) OD |
| Patent Number | Patent pending |
| Pipe, quantity | 4 |
| Sectors, quantity | 1 |
| Tower Taper | Non-tapered Tapered |

Dimensions

| | |
|----------------------------|----------------------|
| Height | 3,200.4 mm 126 in |
| Face Width | 4.42 m 14.5 ft |
| Width | 4,419.6 mm 174 in |
| Pipe Length | 3,200.4 mm 126 in |
| Face Support Pipe Diameter | 73.025 mm 2.875 in |
| Mounting Diameter, maximum | 218.44 mm 8.6 in |
| Mounting Diameter, minimum | 38.1 mm 1.5 in |
| Pipe Outer Diameter | 60.325 mm 2.375 in |
| Stand-off Distance | 1,041.4 mm 41 in |

Material Specifications

| | |
|---------------|--------------------------|
| Material Type | Hot dip galvanized steel |
|---------------|--------------------------|

Mechanical Specifications

| | |
|-------------|---|
| Wind Rating | For Specifications, please contact your local ANDREW representative |
|-------------|---|

SFG22HD-14-4-126

Wind Rating Test Method TIA/EIA-222-G

Packaging and Weights

Included Frame | Pipe mounts | Plain end pipes (4) | Stiff arms (2) | Tower attachment

Packaging quantity 1

Regulatory Compliance/Certifications

| Agency | Classification |
|------------|-----------------------------------|
| CHINA-ROHS | Above maximum concentration value |
| ROHS | Compliant/Exempted |
| UK-ROHS | Compliant/Exempted |



* Footnotes

Wind Rating BWS—Base Wind Speed; FBC—Florida Building Code