

4V-15A-R4



8-port multibeam antenna, 8x 1710–2690 MHz, 4x 15-17° HPBW, 4x RET with tilt indicators

- Provides 4 beams, Supporting for high capacity at venues or special events
- Increases capacity density for maximum throughput
- All RETs have a tilt indicator rod

General Specifications

Antenna Type	Multibeam
Band	Single band
Color	Light Gray (RAL 7035)
Grounding Type	RF connector inner conductor and body grounded to reflector and mounting bracket
Performance Note	Outdoor usage
Radome Material	Fiberglass, UV resistant
Radiator Material	Aluminum Low loss circuit board
Reflector Material	Aluminum
RF Connector Interface	4.3-10 Female
RF Connector Location	Bottom
RF Connector Quantity, high band	0
RF Connector Quantity, mid band	8
RF Connector Quantity, low band	0
RF Connector Quantity, total	8

Remote Electrical Tilt (RET) Information

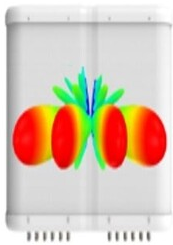
RET Hardware	CommRET v2
RET Interface	8-pin DIN Female 8-pin DIN Male
RET Interface, quantity	1 female 1 male
Input Voltage	10–30 Vdc
Internal RET	Mid band (4)
Power Consumption, active state, maximum	10 W
Power Consumption, idle state, maximum	2 W
Protocol	3GPP/AISG 2.0 (Single RET)

4V-15A-R4

Dimensions

Width	640 mm 25.197 in
Depth	235 mm 9.252 in
Length	1226 mm 48.268 in
Net Weight, antenna only	38.1 kg 83.996 lb

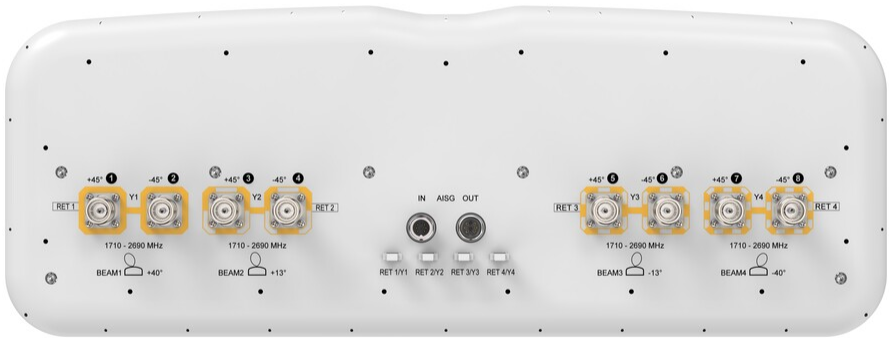
Array Layout



Array ID	Frequency (MHz)	RF Connector	RET (SRET)	AISG No.	AISG RET UID
Y1	1710-2690	1 - 2	1	AISG1	CPxxxxxxxxxxxxxY1
Y2	1710-2690	3 - 4	2	AISG1	CPxxxxxxxxxxxxxY2
Y3	1710-2690	5 - 6	3	AISG1	CPxxxxxxxxxxxxxY3
Y4	1710-2690	7 - 8	4	AISG1	CPxxxxxxxxxxxxxY4

(Sizes of colored boxes are not true depictions of array sizes)

Port Configuration



4V-15A-R4

Electrical Specifications

Impedance	50 ohm
Operating Frequency Band	1710 – 2690 MHz
Polarization	±45°
Total Input Power, maximum	960 W

Electrical Specifications

Frequency Band, MHz	1710–1920	1920–2180	2300–2500	2500–2690
Gain, dBi	21.1	22	22.5	22.6
Beam Centers, Horizontal, degrees	±13 ±40	±13 ±40	±13 ±40	±13 ±40
Beamwidth, Horizontal, degrees	17	16	13	12
Beamwidth, Vertical, degrees	7.8	7	6	5.6
Beam Tilt, degrees	2–10	2–10	2–10	2–10
USLS (First Lobe), dB	16	16	17	17
Front-to-Back Ratio at 180°, dB	31	32	29	31
Isolation, Cross Polarization, dB	25	25	25	25
Isolation, Beam to Beam, dB	18	19	17	16
VSWR Return loss, dB	1.5 14.0	1.5 14.0	1.5 14.0	1.5 14.0
PIM, 3rd Order, 2 x 20 W, dBc	-150	-150	-150	-150
Input Power per Port, maximum, watts	200	200	200	200

Mechanical Specifications

Wind Loading @ Velocity, frontal	473.0 N @ 150 km/h (106.3 lbf @ 150 km/h)
Wind Loading @ Velocity, lateral	128.0 N @ 150 km/h (28.8 lbf @ 150 km/h)
Wind Loading @ Velocity, maximum	603.0 N @ 150 km/h (135.6 lbf @ 150 km/h)
Wind Loading @ Velocity, rear	295.0 N @ 150 km/h (66.3 lbf @ 150 km/h)
Wind Speed, maximum	241 km/h (150 mph)

Packaging and Weights

Width, packed	752 mm 29.606 in
Depth, packed	377 mm 14.843 in
Length, packed	1379 mm 54.291 in
Weight, gross	50.1 kg 110.451 lb

4V-15A-R4

Regulatory Compliance/Certifications

Agency	Classification
CHINA-ROHS	Below maximum concentration value
ISO 9001:2015	Designed, manufactured and/or distributed under this quality management system
REACH-SVHC	Compliant as per SVHC revision on www.commscope.com/ProductCompliance
ROHS	Compliant
UK-ROHS	Compliant



Included Products

BSAMNT-3	–	Wide Profile Antenna Downtilt Mounting Kit for 2.4 - 4.5 in (60 - 115 mm) OD round members. Kit contains one scissor top bracket set and one bottom bracket set.
----------	---	--

* Footnotes

Performance Note	Severe environmental conditions may degrade optimum performance
------------------	---