

KKSS-65A-R2



8-port sector antenna, 4x 617-960MHz, 4x 3100-4000 MHz, 65deg HPBW, 2x RET

This product will be discontinued on: December 31, 2025

General Specifications

Antenna Type	Sector
Band	Multiband
Color	Light Gray (RAL 7035)
Grounding Type	RF connector inner conductor and body grounded to reflector and mounting bracket
Performance Note	Outdoor usage
Radome Material	Fiberglass, UV resistant
Reflector Material	Aluminum
RF Connector Interface	4.3-10 Female
RF Connector Location	Bottom
RF Connector Quantity, high band	4
RF Connector Quantity, mid band	0
RF Connector Quantity, low band	4
RF Connector Quantity, total	8

Remote Electrical Tilt (RET) Information

RET Hardware	CommRET v2
RET Interface	8-pin DIN Female 8-pin DIN Male
RET Interface, quantity	1 female 1 male
Input Voltage	10–30 Vdc
Internal RET	High band (1) Low band (1)
Power Consumption, active state, maximum	8 W
Power Consumption, idle state, maximum	1 W

KKSS-65A-R2

Protocol 3GPP/AISG 2.0

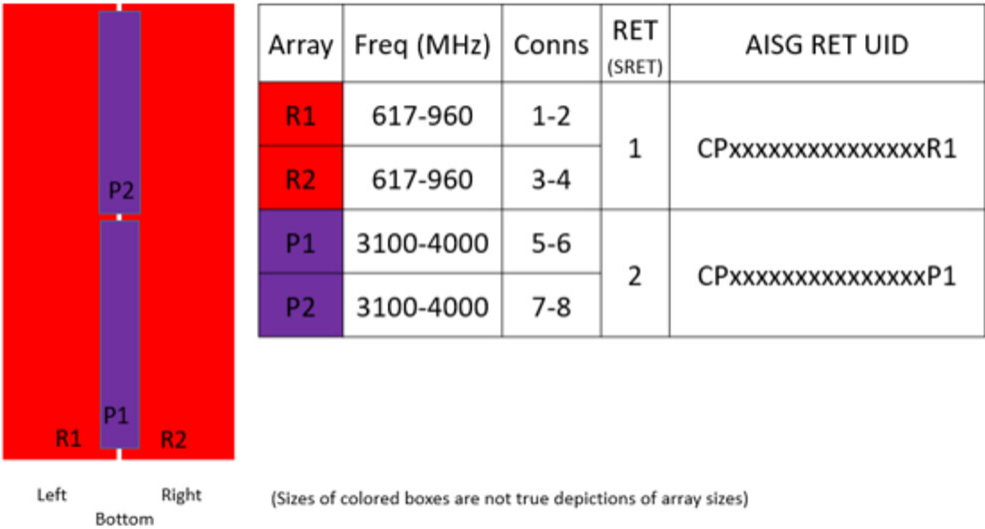
Dimensions

Width 498 mm | 19.606 in

Depth 197 mm | 7.756 in

Length 1499 mm | 59.016 in

Array Layout



Port Configuration

KKSS-65A-R2



Electrical Specifications

Impedance	50 ohm
Operating Frequency Band	3100 – 4000 MHz 617 – 960 MHz
Polarization	±45°
Total Input Power, maximum	800 W @ 50 °C

Electrical Specifications

	R1,R2	R1,R2	R1,R2	R1,R2	P1,P2	P1,P2	P1,P2	P1,P2
Frequency Band, MHz	617–698	698–806	806–894	880–960	3100–3300	3300–3550	3550–3700	3700–4000
RF Port	1,2,3,4	1,2,3,4	1,2,3,4	1,2,3,4	5,6,7,8	5,6,7,8	5,6,7,8	5,6,7,8
Gain, dBi	13.2	13.3	13.8	14.1	17	17.1	17.1	16.8
Beamwidth, Horizontal, degrees	67	59	59	60	55	54	60	62
Beamwidth, Vertical, degrees	18.3	16.6	14.9	13.8	7.2	6.8	6.5	6.3
Beam Tilt, degrees	4–18	4–18	4–18	4–18	2–12	2–12	2–12	2–12
USLS (First Lobe), dB	15	16	15	17	18	17	16	17
Front-to-Back Ratio at 180°, dB	27	27	27	29	30	31	30	29
Front-to-Back Total Power at	21	21	22	22	26	25	24	23

KKSS-65A-R2

180° ± 30°, dB								
Isolation, Cross Polarization, dB	25	25	25	25	25	25	25	25
Isolation, Inter-band, dB	25	25	25	25	25	25	25	25
VSWR Return loss, dB	1.5 14.0	1.5 14.0	1.5 14.0	1.5 14.0	1.5 14.0	1.5 14.0	1.5 14.0	1.5 14.0
PIM, 3rd Order, 2 x 20 W, dBc	-150	-150	-150	-150	-145	-145	-145	-145
Input Power per Port at 50°C, maximum, watts	250	250	250	250	150	150	150	150

Mechanical Specifications

Wind Loading @ Velocity, frontal	498.0 N @ 150 km/h (112.0 lbf @ 150 km/h)
Wind Loading @ Velocity, lateral	148.0 N @ 150 km/h (33.3 lbf @ 150 km/h)
Wind Loading @ Velocity, maximum	597.0 N @ 150 km/h (134.2 lbf @ 150 km/h)
Wind Loading @ Velocity, rear	342.0 N @ 150 km/h (76.9 lbf @ 150 km/h)
Wind Speed, maximum	241 km/h (150 mph)

Environmental Specifications

Operating Temperature	-40 °C to +70 °C (-40 °F to +158 °F)
-----------------------	--------------------------------------

Packaging and Weights

Width, packed	565 mm 22.244 in
Depth, packed	309 mm 12.165 in
Length, packed	1686 mm 66.378 in
Weight, gross	36.9 kg 81.35 lb
Weight, net	25 kg 55.116 lb

Regulatory Compliance/Certifications

Agency	Classification
ISO 9001:2015	Designed, manufactured and/or distributed under this quality management system

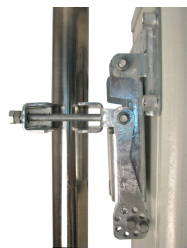
Included Products

BSAMNT-3	–	Wide Profile Antenna Downtilt Mounting Kit for 2.4 - 4.5 in (60 - 115 mm) OD round members. Kit contains one scissor top bracket set and one bottom bracket set.
----------	---	--

* Footnotes

Performance Note	Severe environmental conditions may degrade optimum performance
------------------	---

BSAMNT-3



Wide Profile Antenna Downtilt Mounting Kit for 2.4 - 4.5 in (60 - 115 mm) OD round members. Kit contains one scissor top bracket set and one bottom bracket set.

Product Classification

Product Type Downtilt mounting kit

General Specifications

Application Outdoor

Color Silver

Dimensions

Compatible Diameter, maximum 115 mm | 4.528 in

Compatible Diameter, minimum 60 mm | 2.362 in

Weight, net 6.2 kg | 13.669 lb

Material Specifications

Material Type Galvanized steel

Packaging and Weights

Included Brackets | Hardware

Packaging quantity 1

Weight, gross 6.4 kg | 14.11 lb

Regulatory Compliance/Certifications

Agency	Classification
CE	Compliant with the relevant CE product directives
CHINA-ROHS	Below maximum concentration value
ISO 9001:2015	Designed, manufactured and/or distributed under this quality management system
REACH-SVHC	Compliant as per SVHC revision on www.andrew.com/ProductCompliance
ROHS	Compliant
UK-ROHS	Compliant

