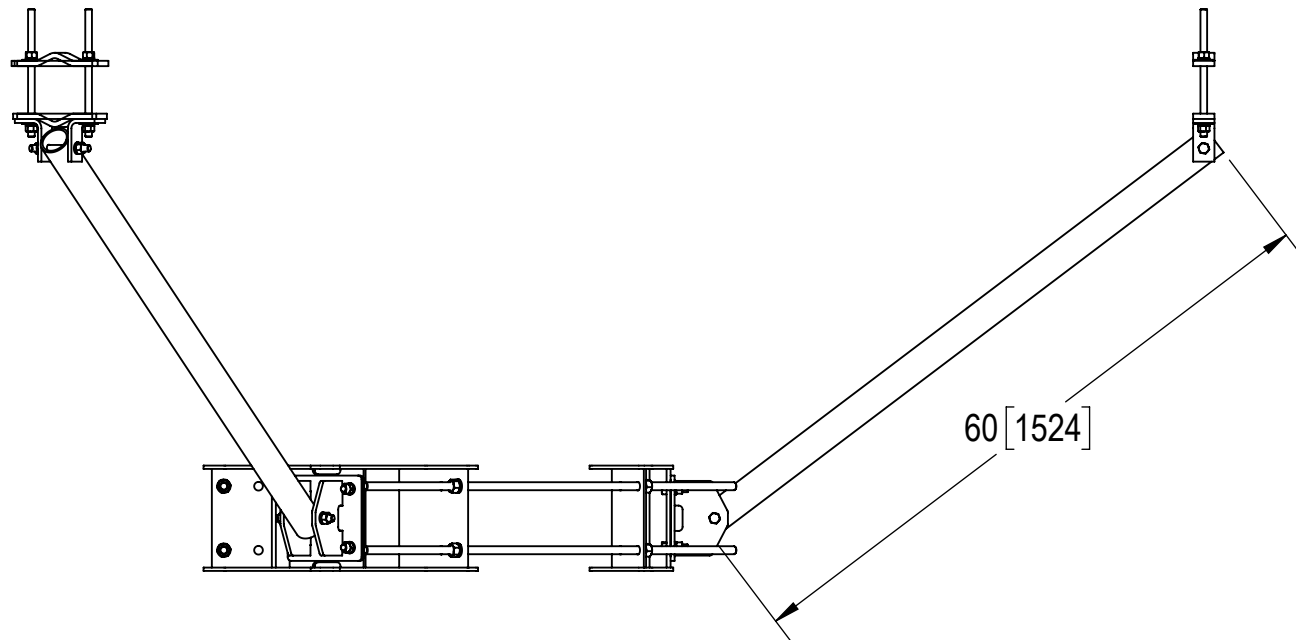
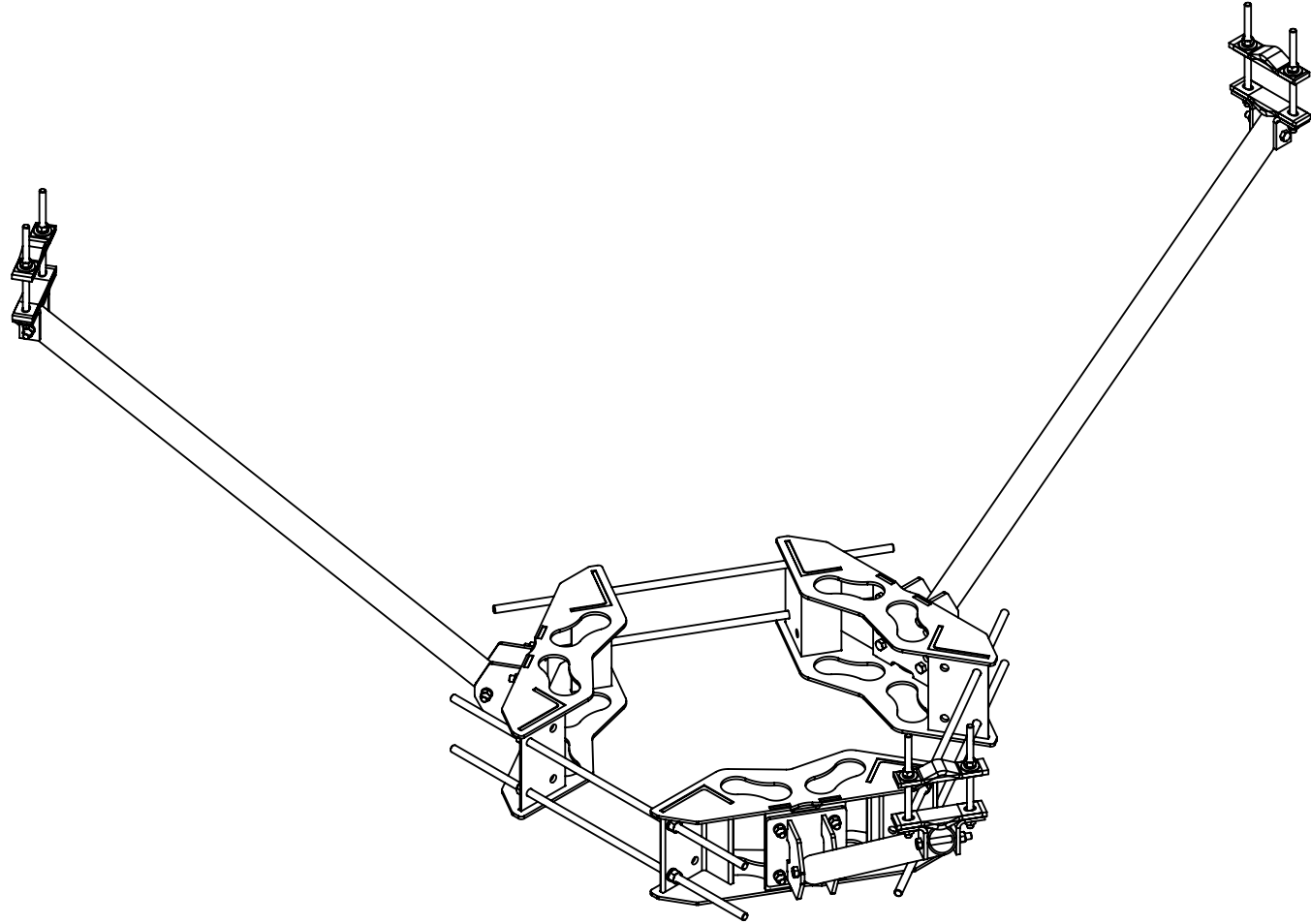
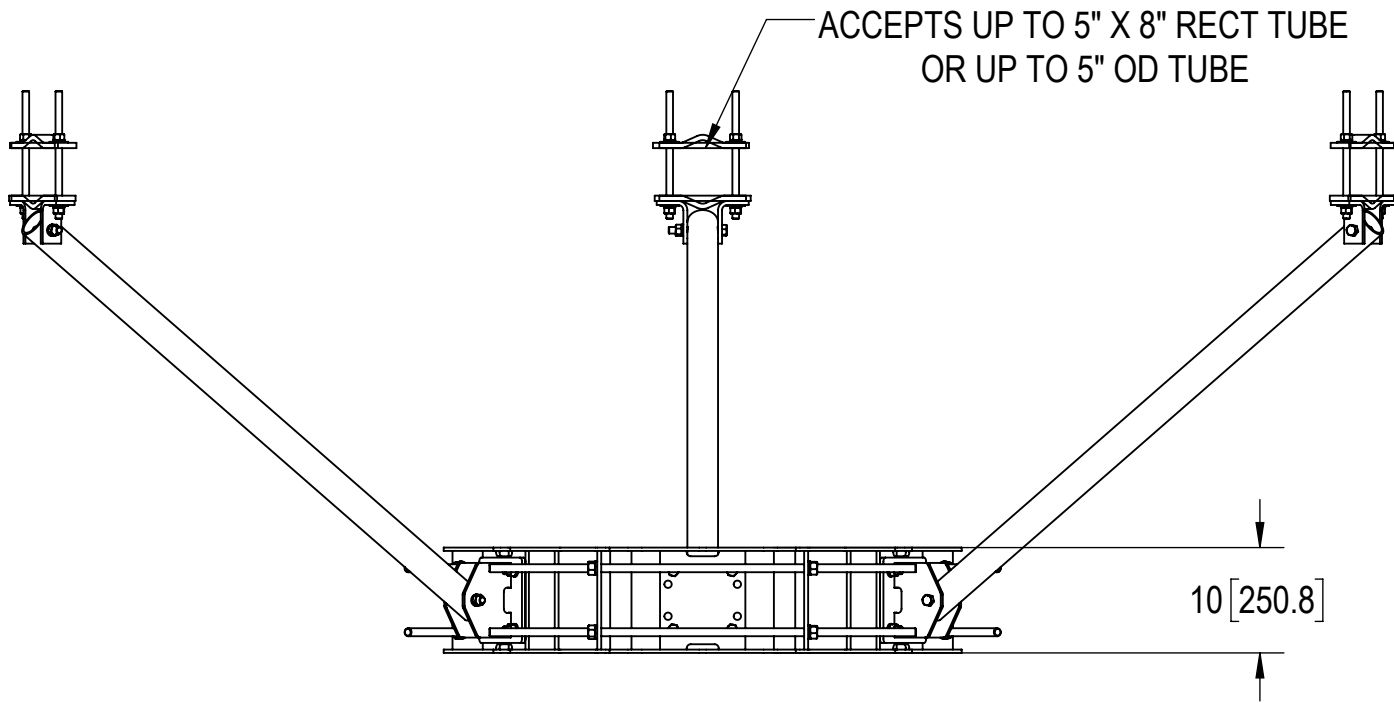
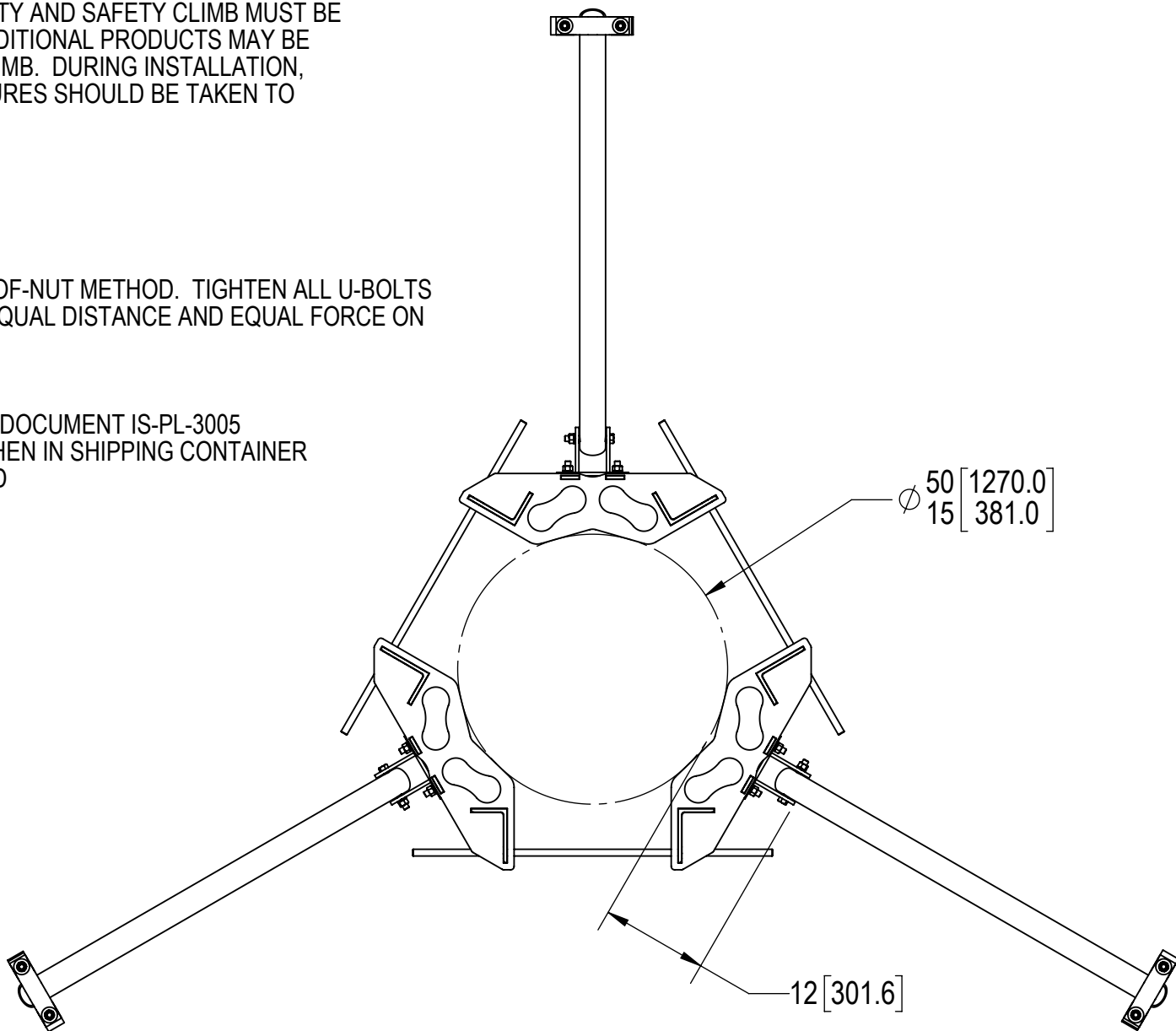

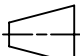
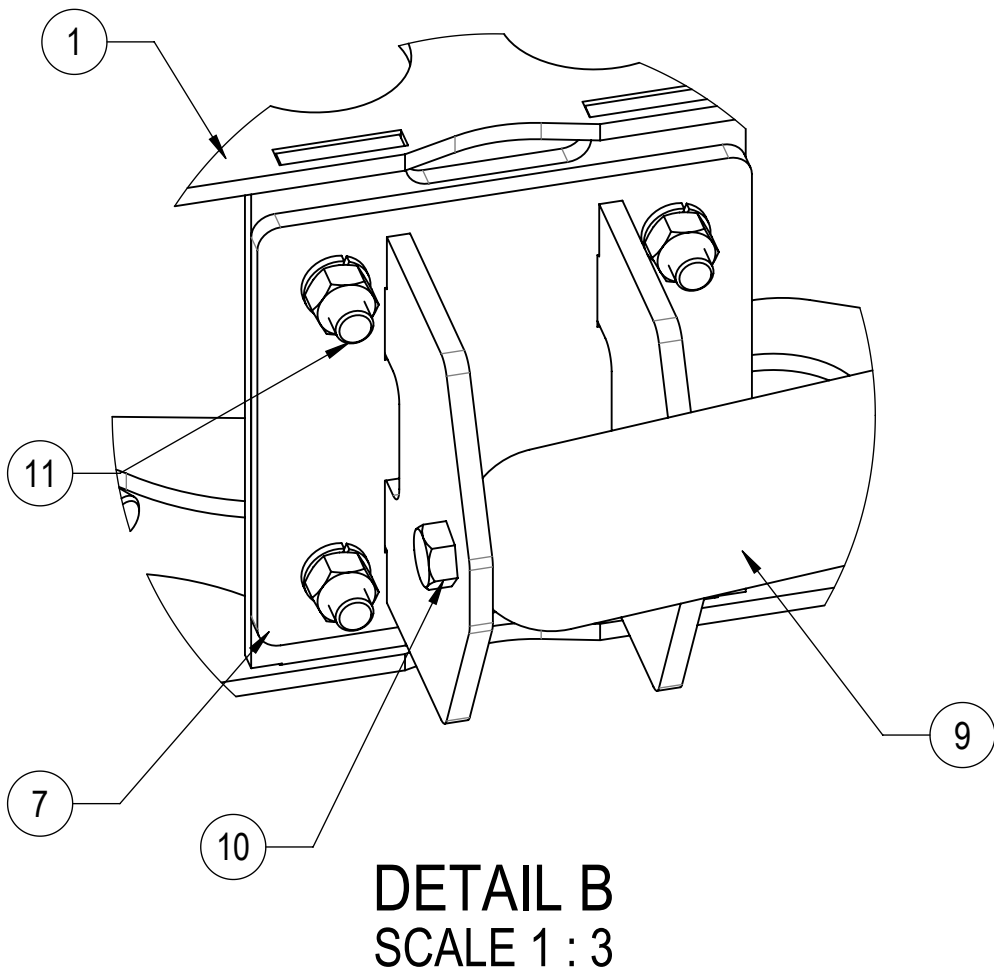


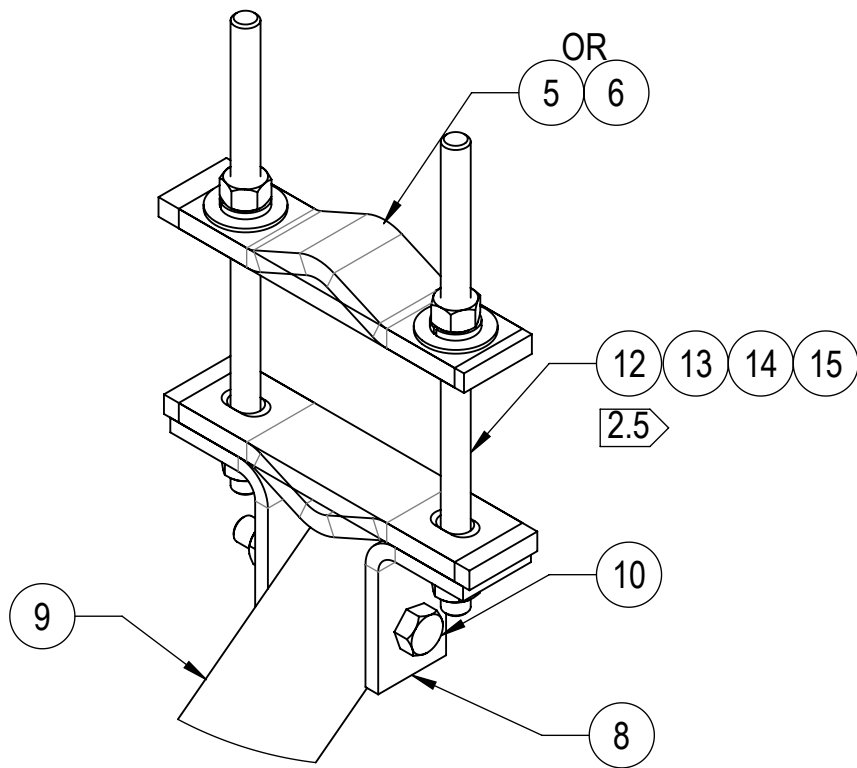
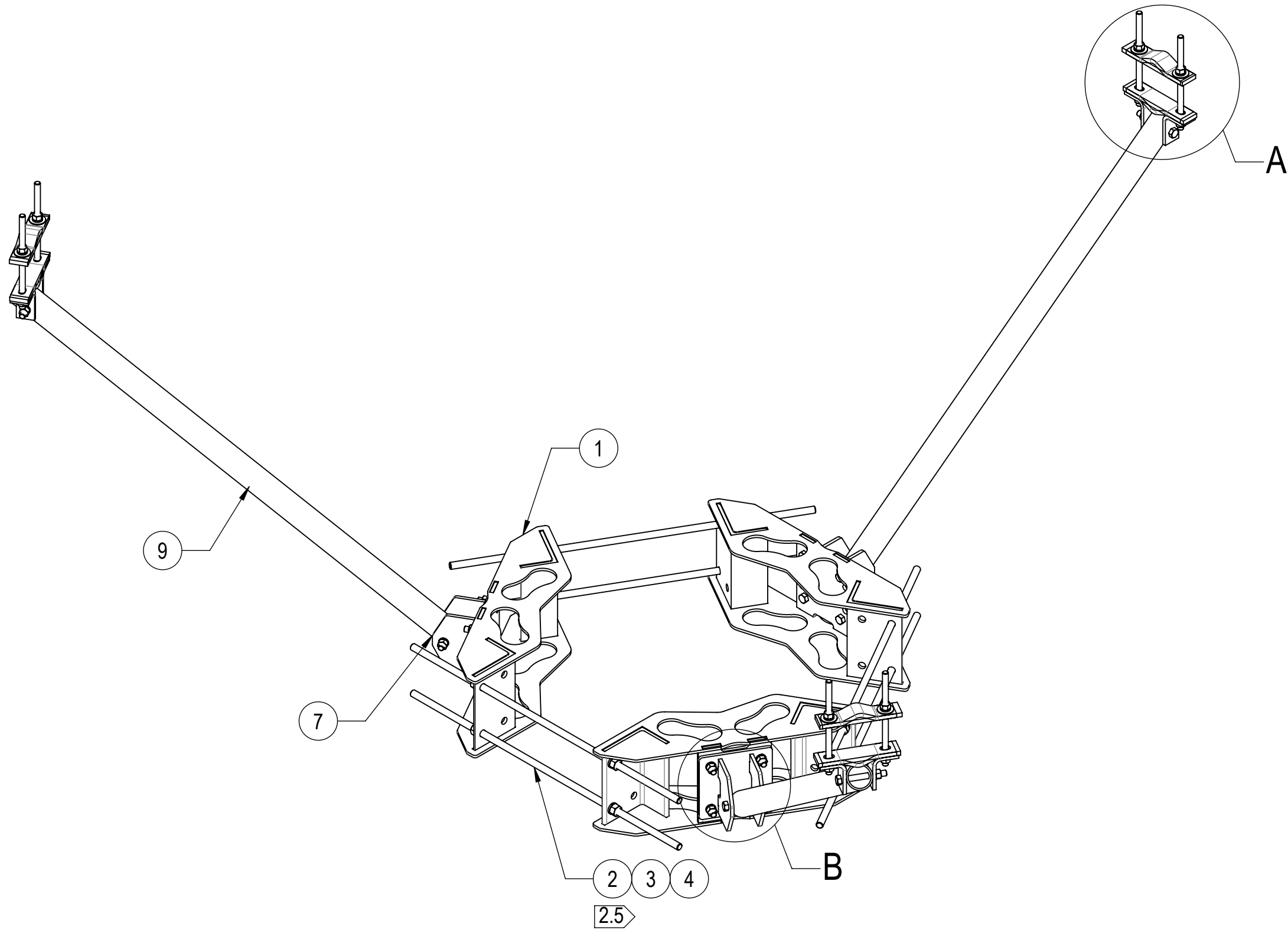
- 1.0 GENERAL NOTES
- 1.1 ALL METRIC DIMENSIONS ARE IN BRACKETS [X. X]
- 1.2 FOR PATENT INFO: <https://www.cs-pat.com>
- 2.0 DESIGN NOTES
- 2.1 ANY HAZARDS OR OBSTRUCTIONS TO THE CLIMBING FACILITY AND SAFETY CLIMB MUST BE IDENTIFIED PRIOR TO INSTALLING THE APPURTENANCE. ADDITIONAL PRODUCTS MAY BE REQUIRED TO MAINTAIN THE INTEGRITY OF THE SAFETY CLIMB. DURING INSTALLATION, TEMPORARY AND/OR PERMANENT PRECAUTIONARY MEASURES SHOULD BE TAKEN TO PRESERVE THE CLIMBING FACILITY AND/OR SAFETY CLIMB.
- 2.2 FITS MONOPOLES 15"- 50" OD.
- 2.3 USE DCP10 FOR ROUND TUBE STAND-OFF ARM.
- 2.4 USE MTC323704 FOR RECTANGLE TUBE STAND-OFF ARM.
- 2.5 CUT THREADED RODS AS NEEDED FOR PROPER LENGTH.
- 3.0 MANUFACTURING/SPECIAL REQUIREMENTS
- 3.1 TIGHTEN ALL BOLTS SECURING FLAT PLATES BY THE TURN-OF-NUT METHOD. TIGHTEN ALL U-BOLTS USING TURN-OF-NUT METHOD WITH ATTENTION TO LEAVE EQUAL DISTANCE AND EQUAL FORCE ON EACH LEG OF THE U-BOLT.
- 4.0 TEST
- 5.0 PACKAGING
- 5.1 PACKAGING SHALL MEET COMMScope REQUIREMENTS PER DOCUMENT IS-PL-3005
- 5.2 PRINTED DOCUMENT TO BE PLACED INSIDE POLYBAG AND THEN IN SHIPPING CONTAINER
- 5.3 EXTRA HARDWARE MAY BE SUPPLIED, BAGGED AND SHIPPED



COMMSCOPE, INC. OF NORTH CAROLINA																	
TOLERANCES						SAP MATERIAL MASTER											
1 PLACE .X[X] ± .12[3.0]		3 PLACE .XXX[X] ± .030[0.8]				RK-60-3M											
2 PLACE .XX[X] ± .06[1.5]		ANGLES ± 2°															
FINISH						MATERIAL											
UNLESS OTHERWISE SPECIFIED DIMENSIONS ARE IN INCHES INTERPRET PER ANSI Y 14.5M-1994		NAME		DATE		REINFORCEMENT KIT, 15-50 MP, 60" ARM											
	CE	MSM		09/22/14													
	RW	YMENG		04/16/2024													
	AD	CB1094		04/17/2024		SCALE 1:24		DOCUMENT NO. RK-60-3M									
	RE	YMENG		04/24/2024													
	ECN 40193236CMO																
SIZE		Auth Group		INSL		MODEL			DRAWING			SHEET 1 OF 2					
C						VERSION 02		STATUS RE		REVISION C				VERSION 02		STATUS RE	




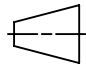
DETAIL B
SCALE 1 : 3



DETAIL A
SCALE 1 : 4

COMPONENT PART NUMBERS PROVIDED FOR ASSEMBLY PURPOSES;
INDIVIDUAL COMPONENTS MAY BE SHIPPED AS PARTS WITHIN AN INCLUDED KIT.

ITEM	PART NO.	DESCRIPTION	QTY.	WEIGHT	NOTE NO.
1	MTC306504W	1550 RM WELDMENT	3	0.00 LBS	
2	MT38440	3/4" X 40" GALV THREADED ROD GRADE B7	6	4.98 LBS	2.5
3	GWL-06	3/4" GALV LOCK WASHER	12	0.04 LBS	
4	GN-06	3/4" GALV HEX NUT	12	0.15 LBS	
5	DCP10	CLAMP HALF:1/2", 11/16" HOLE,5-3/4"	6	2.21 LBS	2.3
6	MTC323704	CLAMP BAR	6	2.37 LBS	2.4
7	RK01	KICKER STANDOFF WELDMENT	3	12.54 LBS	
8	RK02	CONNECTION BRACKET	6	1.21 LBS	
9	RK60	KICKER ARM SUPPORT TUBE 5'	3	28.73 LBS	
10	GB-0550A	5/8" X 5" GALV BOLT KIT (A325)	6	0.52 LBS	
11	GB-0520A	5/8" X 2" GALV BOLT KIT (A325)	12	0.26 LBS	
12	MT-381	5/8" X 12" GALV THREADED ROD	6	1.04 LBS	2.5
13	GWf-05	5/8" GALV FLAT WASHER, 1.70D	12	0.06 LBS	
14	GWL-05	5/8" GALV LOCK WASHER	12	0.03 LBS	
15	GN-05	5/8" GALV HEX NUT	12	0.08 LBS	

COMMScope, INC. OF NORTH CAROLINA				
TITLE REINFORCEMENT KIT, 15-50 MP, 60" ARM				
SIZE C	SCALE 1:24	DOCUMENT NO. RK-60-3M		
 		DRAWING		
		VERSION 02	STATUS RE	REVISION C
				SHEET 2 OF 2