

J3AH4-65B-R6



16-port, low band diplexed antenna, 2x 698-728 MHz, 2x758-798 MHz, 2 x 698-798 MHz, 2 x 824-894 MHz and 8 x 1695-2360 MHz, 65° HPBW, 6 x RET

- Features broadband Low Band (698-894 MHz) and Mid Band (1695-2360 MHz) arrays for 4T4R (4X MIMO) capability for 700 and 850 MHz, AWS, PCS and WCS applications
- Both Low Band arrays are diplexed for independent tilt, with one array providing two ports of B29 and two ports of B14 and the other array providing two ports of B14 and two ports of B5
- Excellent wind loading characteristics
- Optimized SPR performance across all operating bands

This product will be discontinued on: December 31, 2025

General Specifications

| | |
|---|--|
| Antenna Type | Sector |
| Band | Multiband |
| Color | Light Gray (RAL 7035) |
| Grounding Type | RF connector inner conductor and body grounded to reflector and mounting bracket |
| Performance Note | Outdoor usage |
| Radome Material | Fiberglass, UV resistant |
| Reflector Material | Aluminum |
| RF Connector Interface | 4.3-10 Female |
| RF Connector Location | Bottom |
| RF Connector Quantity, high band | 0 |
| RF Connector Quantity, mid band | 8 |
| RF Connector Quantity, low band | 8 |
| RF Connector Quantity, total | 16 |

Remote Electrical Tilt (RET) Information

| | |
|--------------------------------|-----------------------------------|
| RET Hardware | CommRET v2 |
| RET Interface | 8-pin DIN Female 8-pin DIN Male |
| RET Interface, quantity | 2 female 2 male |

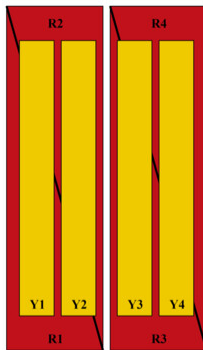
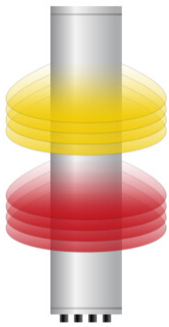
J3AH4-65B-R6

| | |
|---|-----------------------------|
| Input Voltage | 10–30 Vdc |
| Internal RET | Low band (4) Mid band (2) |
| Power Consumption, active state, maximum | 8 W |
| Power Consumption, idle state, maximum | 1 W |
| Protocol | 3GPP/AISG 2.0 (Multi-RET) |

Dimensions

| | |
|---------------------------------|---------------------|
| Width | 498 mm 19.606 in |
| Depth | 197 mm 7.756 in |
| Length | 1828 mm 71.969 in |
| Net Weight, antenna only | 43.6 kg 96.121 lb |

Array Layout



| Array ID | Frequency (MHz) | RF Connector | RET (MRET) | AISG No. | AISG RET UID |
|----------|-----------------|--------------|------------|----------|--------------------|
| R1 | 698-728 | 1 - 2 | 1 | AISG1 | CPxxxxxxxxxxxxMM.1 |
| R2 | 758-798 | 3 - 4 | 2 | AISG1 | CPxxxxxxxxxxxxMM.2 |
| R3 | 698-798 | 5 - 6 | 3 | AISG1 | CPxxxxxxxxxxxxMM.3 |
| R4 | 824-894 | 7 - 8 | 4 | AISG1 | CPxxxxxxxxxxxxMM.4 |
| Y1 | 1695-2360 | 9 - 10 | 5 | AISG1 | CPxxxxxxxxxxxxMM.5 |
| Y2 | 1695-2360 | 11 - 12 | | | |
| Y3 | 1695-2360 | 13 - 14 | 6 | AISG1 | CPxxxxxxxxxxxxMM.6 |
| Y4 | 1695-2360 | 15 - 16 | | | |

(Sizes of colored boxes are not true depictions of array sizes)

Port Configuration

J3AH4-65B-R6



Electrical Specifications

| | |
|-----------------------------------|---|
| Impedance | 50 ohm |
| Operating Frequency Band | 1695 – 2360 MHz 698 – 798 MHz 824 – 894 MHz |
| Polarization | ±45° |
| Total Input Power, maximum | 1,280 W @ 50 °C |

Electrical Specifications

| Frequency Band, MHz | 698–798 | 824–896 | 1695–1880 | 1850–1990 | 1920–2180 | 2300–2360 |
|--|---------|---------|-----------|-----------|-----------|-----------|
| Beamwidth, Horizontal, degrees | 64 | 61 | 70 | 67 | 62 | 60 |
| Beamwidth, Vertical, degrees | 12.1 | 11 | 7 | 6.4 | 6.1 | 5.5 |
| Beam Tilt, degrees | 2–14 | 2–14 | 2–12 | 2–12 | 2–12 | 2–12 |
| USLS (First Lobe), dB | 15 | 18 | 17 | 18 | 18 | 18 |
| Front-to-Back Ratio at 180°, dB | 31 | 29 | 34 | 34 | 33 | 35 |
| Front-to-Back Total Power at 180° ± 30°, dB | 24 | 24 | 28 | 27 | 27 | 28 |
| Isolation, Cross Polarization, dB | 25 | 25 | 25 | 25 | 25 | 25 |
| Isolation, Inter-band, dB | 25 | 25 | 25 | 25 | 25 | 25 |

J3AH4-65B-R6

| | | | | | | |
|---|----------|----------|----------|----------|----------|----------|
| VSWR Return loss, dB | 1.5 14.0 | 1.5 14.0 | 1.5 14.0 | 1.5 14.0 | 1.5 14.0 | 1.5 14.0 |
| PIM, 3rd Order, 2 x 20 W, dBc | -150 | -150 | -150 | -150 | -150 | -150 |
| Input Power per Port at 50°C, maximum, watts | 150 | 150 | 250 | 250 | 250 | 200 |

Mechanical Specifications

| | |
|---|---|
| Wind Loading @ Velocity, frontal | 622.0 N @ 150 km/h (139.8 lbf @ 150 km/h) |
| Wind Loading @ Velocity, lateral | 188.0 N @ 150 km/h (42.3 lbf @ 150 km/h) |
| Wind Loading @ Velocity, maximum | 746.0 N @ 150 km/h (167.7 lbf @ 150 km/h) |
| Wind Loading @ Velocity, rear | 428.0 N @ 150 km/h (96.2 lbf @ 150 km/h) |
| Wind Speed, maximum | 241 km/h (150 mph) |

Packaging and Weights

| | |
|-----------------------|----------------------|
| Width, packed | 565 mm 22.244 in |
| Depth, packed | 309 mm 12.165 in |
| Length, packed | 2015 mm 79.331 in |
| Weight, gross | 57.4 kg 126.545 lb |

Regulatory Compliance/Certifications

| Agency | Classification |
|---------------|--|
| CHINA-ROHS | Below maximum concentration value |
| ISO 9001:2015 | Designed, manufactured and/or distributed under this quality management system |
| REACH-SVHC | Compliant as per SVHC revision on www.commscope.com/ProductCompliance |
| ROHS | Compliant |
| UK-ROHS | Compliant |



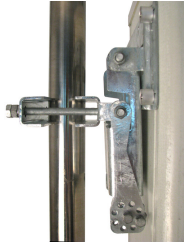
Included Products

| | | |
|----------|---|--|
| BSAMNT-4 | – | Wide Profile Antenna Downtilt Mounting Kit for 2.4 - 4.5 in (60 - 115 mm) OD round members. Kit contains one scissor top bracket set and one bottom bracket set. |
|----------|---|--|

* Footnotes

| | |
|-------------------------|---|
| Performance Note | Severe environmental conditions may degrade optimum performance |
|-------------------------|---|

BSAMNT-4



Wide Profile Antenna Downtilt Mounting Kit for 2.4 - 4.5 in (60 - 115 mm) OD round members. Kit contains one scissor top bracket set and one bottom bracket set.

Product Classification

Product Type Downtilt mounting kit

General Specifications

Application Outdoor

Color Silver

Dimensions

Compatible Diameter, maximum 115 mm | 4.528 in

Compatible Diameter, minimum 60 mm | 2.362 in

Weight, net 6.5 kg | 14.33 lb

Material Specifications

Material Type Galvanized steel

Packaging and Weights

Included Brackets | Hardware

Packaging quantity 1

Regulatory Compliance/Certifications

| Agency | Classification |
|---------------|--|
| CHINA-ROHS | Below maximum concentration value |
| ISO 9001:2015 | Designed, manufactured and/or distributed under this quality management system |
| REACH-SVHC | Compliant as per SVHC revision on www.andrew.com/ProductCompliance |
| ROHS | Compliant |
| UK-ROHS | Compliant |

