

# EGRZZHHTT-65A-R8



18-port sector antenna, 2x 694–862, 2x 880–960, 2x 694–960, 4x 1427–2690, 4x 1695–2180 and 4x 2490–2690 MHz, 65° HPBW, 8x RET

- All Internal RET actuators are connected in "Cascaded SRET" configuration
- Supports re-configurable antenna sharing capability enabling control of the internal RET system using up to two separate RET compatible OEM radios
- Antenna shape optimized for wind load reduction

This product will be discontinued on: December 31, 2025

## General Specifications

Antenna Type	Sector
Band	Multiband
Color	Light Gray (RAL 7035)
Grounding Type	RF connector inner conductor and body grounded to reflector and mounting bracket
Performance Note	Outdoor usage
Radome Material	Fiberglass, UV resistant
Reflector Material	Aluminum
RF Connector Interface	4.3-10 Female
RF Connector Location	Bottom
RF Connector Quantity, high band	0
RF Connector Quantity, mid band	12
RF Connector Quantity, low band	6
RF Connector Quantity, total	18

## Remote Electrical Tilt (RET) Information

RET Hardware	CommRET v2
RET Interface	8-pin DIN Female   8-pin DIN Male
RET Interface, quantity	2 female   2 male
Input Voltage	10–30 Vdc
Internal RET	Low band (3)   Mid band (5)
Power Consumption, active state, maximum	8 W

# EGRZZHHTT-65A-R8

Power Consumption, idle state, maximum	1 W
Protocol	3GPP/AISG 2.0 (Single RET)
Dimensions	
Width	498 mm   19.606 in
Depth	197 mm   7.756 in
Length	1600 mm   62.992 in
Net Weight, antenna only	40.4 kg   89.067 lb

## Array Layout

Array ID	Frequency (MHz)	RF Connector	RET (SRET)	AISG No.	AISG RET UID
R1	694-862	1 - 2	1	AISG1	CPxxxxxxxxxxxxR1
R2	880-960	3 - 4	2	AISG1	CPxxxxxxxxxxxxR2
R3	694-960	5 - 6	3	AISG1	CPxxxxxxxxxxxxR3
B1	1695-2180	7 - 8	4	AISG1	CPxxxxxxxxxxxxB1
B2	1695-2180	9 - 10	5	AISG1	CPxxxxxxxxxxxxB2
Y1	2490-2690	11 - 12	6	AISG1	CPxxxxxxxxxxxxY1
Y4	2490-2690	17 - 18			
Y2	1427-2690	13 - 14	7	AISG1	CPxxxxxxxxxxxxY2
Y3	1427-2690	15 - 16	8	AISG1	CPxxxxxxxxxxxxY3

(Sizes of colored boxes are not true depictions of array sizes)

## Port Configuration

# EGRZZHHTT-65A-R8



## Electrical Specifications

Impedance	50 ohm
Operating Frequency Band	1427 – 2690 MHz   1695 – 2180 MHz   2490 – 2690 MHz   694 – 862 MHz   694 – 960 MHz   880 – 960 MHz
Polarization	±45°
Total Input Power, maximum	900 W @ 50 °C

## Electrical Specifications

	R1	R1	R2	R3	R3	R3
Frequency Band, MHz	698–806	790–862	880–960	698–806	790–894	890–960
RF Port	1,2	1,2	3,4	5,6	5,6	5,6
Gain at Mid Tilt, dBi	13.4	13.6	13.8	13.9	14.3	14.4
Beamwidth, Horizontal, degrees	71	67	65	71	67	65
Beamwidth, Vertical, degrees	13.5	12.7	11.7	13.8	12.7	11.6
Beam Tilt, degrees	3–16	3–16	3–16	3–16	3–16	3–16
USLS (First Lobe), dB	16	15	13	16	17	16
Front-to-Back Ratio at 180°, dB	30	30	28	30	27	28
Front-to-Back Total Power at 180° ± 30°, dB	20	20	20	19	20	21

# EGRZZHHTT-65A-R8

Isolation, Cross Polarization, dB	25	25	25	25	25	25
Isolation, Inter-band, dB	25	25	25	25	25	25
VSWR   Return loss, dB	1.5   14.0	1.5   14.0	1.5   14.0	1.5   14.0	1.5   14.0	1.5   14.0
PIM, 3rd Order, 2 x 20 W, dBc	-150	-150	-150	-150	-150	-150
Input Power per Port at 50°C, maximum, watts	300	300	300	300	300	300

## Electrical Specifications

	B1,B2	B1,B2	Y1,Y4	Y2,Y3	Y2,Y3	Y2,Y3	Y2,Y3	Y2,Y3
Frequency Band, MHz	1695–1995	1920–2180	2490–2690	1427–1518	1695–1995	1920–2300	2300–2500	2490–2690
RF Port	7-10	7-10	11,12,17,18	13-16	13-16	13-16	13-16	13-16
Gain at Mid Tilt, dBi	16.7	17.5	17.8	15.4	16.9	17.7	18.2	18.1
Beamwidth, Horizontal, degrees	69	63	56	73	64	60	58	57
Beamwidth, Vertical, degrees	6.1	5.6	4.6	8	6.4	5.7	4.9	4.6
Beam Tilt, degrees	2–12	2–12	2–12	2–12	2–12	2–12	2–12	2–12
USLS (First Lobe), dB	16	16	17	17	16	16	16	16
Front-to-Back Ratio at 180°, dB	32	31	31	31	32	32	31	30
Front-to-Back Total Power at 180° ± 30°, dB	26	25	26	24	26	26	26	26
Isolation, Cross Polarization, dB	25	25	25	25	25	25	25	25
Isolation, Inter-band, dB	25	25	25	25	25	25	25	25
VSWR   Return loss, dB	1.5   14.0	1.5   14.0	1.5   14.0	1.5   14.0	1.5   14.0	1.5   14.0	1.5   14.0	1.5   14.0
PIM, 3rd Order, 2 x 20 W, dBc	-150	-150	-150	-150	-150	-150	-150	-150
Input Power per Port at 50°C, maximum, watts	250	250	150	250	250	250	200	200

## Mechanical Specifications

Wind Loading @ Velocity, frontal	544.0 N @ 150 km/h (122.3 lbf @ 150 km/h)
Wind Loading @ Velocity, lateral	142.0 N @ 150 km/h (31.9 lbf @ 150 km/h)
Wind Loading @ Velocity, maximum	723.0 N @ 150 km/h (162.5 lbf @ 150 km/h)
Wind Loading @ Velocity, rear	374.0 N @ 150 km/h (84.1 lbf @ 150 km/h)
Wind Speed, maximum	241 km/h (150 mph)

# EGRZZHHTT-65A-R8

## Packaging and Weights

Width, packed	565 mm   22.244 in
Depth, packed	368 mm   14.488 in
Length, packed	1775 mm   69.882 in
Weight, gross	54.2 kg   119.49 lb

## Regulatory Compliance/Certifications

Agency	Classification
CHINA-ROHS	Below maximum concentration value
ISO 9001:2015	Designed, manufactured and/or distributed under this quality management system
REACH-SVHC	Compliant as per SVHC revision on <a href="http://www.commscope.com/ProductCompliance">www.commscope.com/ProductCompliance</a>
ROHS	Compliant
UK-ROHS	Compliant



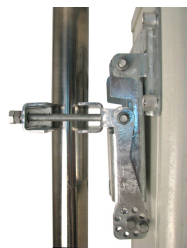
## Included Products

BSAMNT-4	–	Wide Profile Antenna Downtilt Mounting Kit for 2.4 - 4.5 in (60 - 115 mm) OD round members. Kit contains one scissor top bracket set and one bottom bracket set.
----------	---	--

## \* Footnotes

Performance Note	Severe environmental conditions may degrade optimum performance
------------------	---

# BSAMNT-4



Wide Profile Antenna Downtilt Mounting Kit for 2.4 - 4.5 in (60 - 115 mm) OD round members. Kit contains one scissor top bracket set and one bottom bracket set.

## Product Classification

**Product Type** Downtilt mounting kit

## General Specifications

**Application** Outdoor

**Color** Silver

## Dimensions

**Compatible Diameter, maximum** 115 mm | 4.528 in

**Compatible Diameter, minimum** 60 mm | 2.362 in

**Weight, net** 6.5 kg | 14.33 lb

## Material Specifications

**Material Type** Galvanized steel

## Packaging and Weights

**Included** Brackets | Hardware

**Packaging quantity** 1

## Regulatory Compliance/Certifications

Agency	Classification
CHINA-ROHS	Below maximum concentration value
ISO 9001:2015	Designed, manufactured and/or distributed under this quality management system
REACH-SVHC	Compliant as per SVHC revision on <a href="http://www.andrew.com/ProductCompliance">www.andrew.com/ProductCompliance</a>
ROHS	Compliant
UK-ROHS	Compliant

