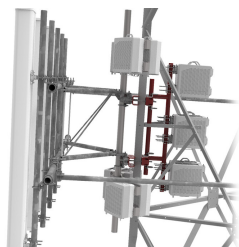


MTC4113 | CORE RRU MOUNT



Core RRU Mount with 24" Stand-off - Mounts to Spine on G2 Series Mounts

Designed for G2 Series Mounts with or Without Extended Spine

- Internal tower RRU mount
- Decreased PIM from radio relocation
- Increased mount stability
- Decreased face loading
- Increased mount versatility without the need for a new RRU mount

NOTE: Requires use of RR-FA2 RRU brackets

Product Classification

Product Type Remote radio head unit mount

General Specifications

Mounting Pipe, 88.9 mm (3-1/2 in) OD

Dimensions

Height 3,048 mm | 120 in

Length 419.1 mm | 16.5 in

Compatible Diameter 88.9 mm | 3.5 in

Mounting Diameter, maximum 88.9 mm | 3.5 in

Mounting Diameter, minimum 88.9 mm | 3.5 in

Stand-off Distance 609.6 mm | 24 in

Material Specifications

Material Type Hot dip galvanized steel

Mechanical Specifications

Wind Rating For Specifications, please contact your local ANDREW representative

Packaging and Weights

Included Clamps | Hardware | Stand-off

Packaging quantity 1

MTC4113 | CORE RRU MOUNT

Weight, net 55.148 kg | 121.58 lb

Regulatory Compliance/Certifications

Agency	Classification
CHINA-ROHS	Above maximum concentration value
ROHS	Compliant/Exempted
UK-ROHS	Compliant/Exempted



* Footnotes

Wind Rating BWS—Base Wind Speed; FBC—Florida Building Code