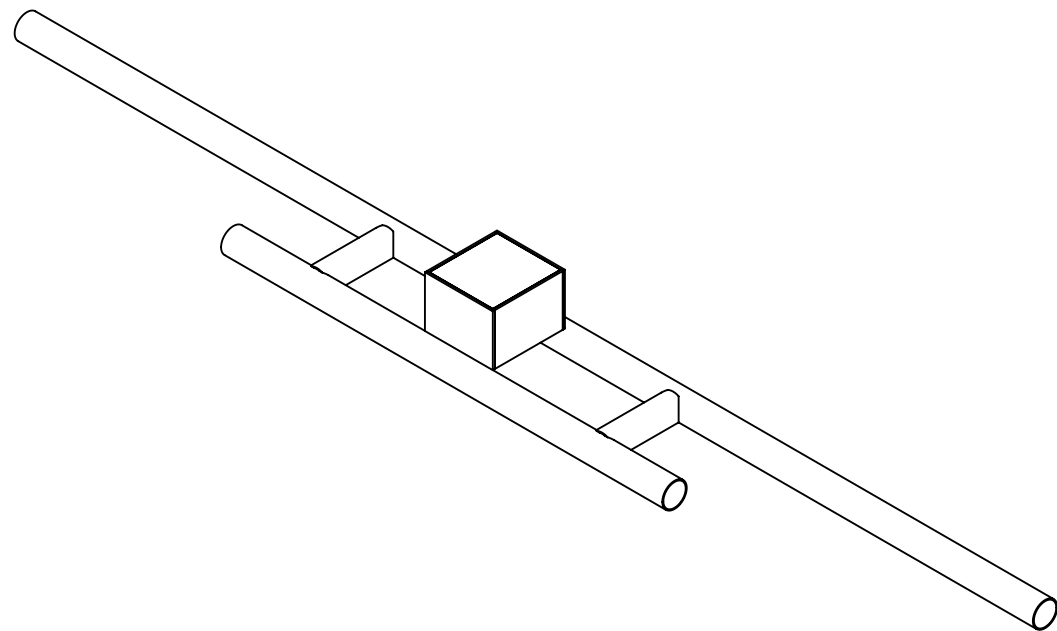
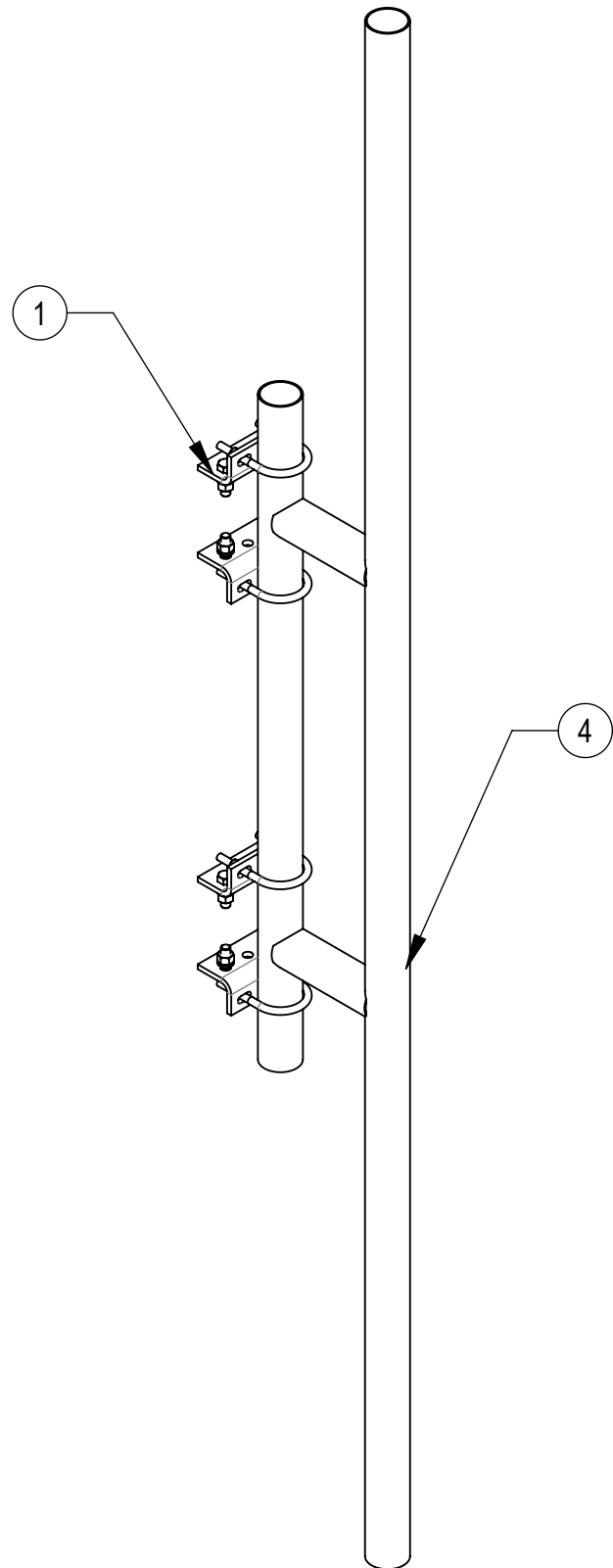
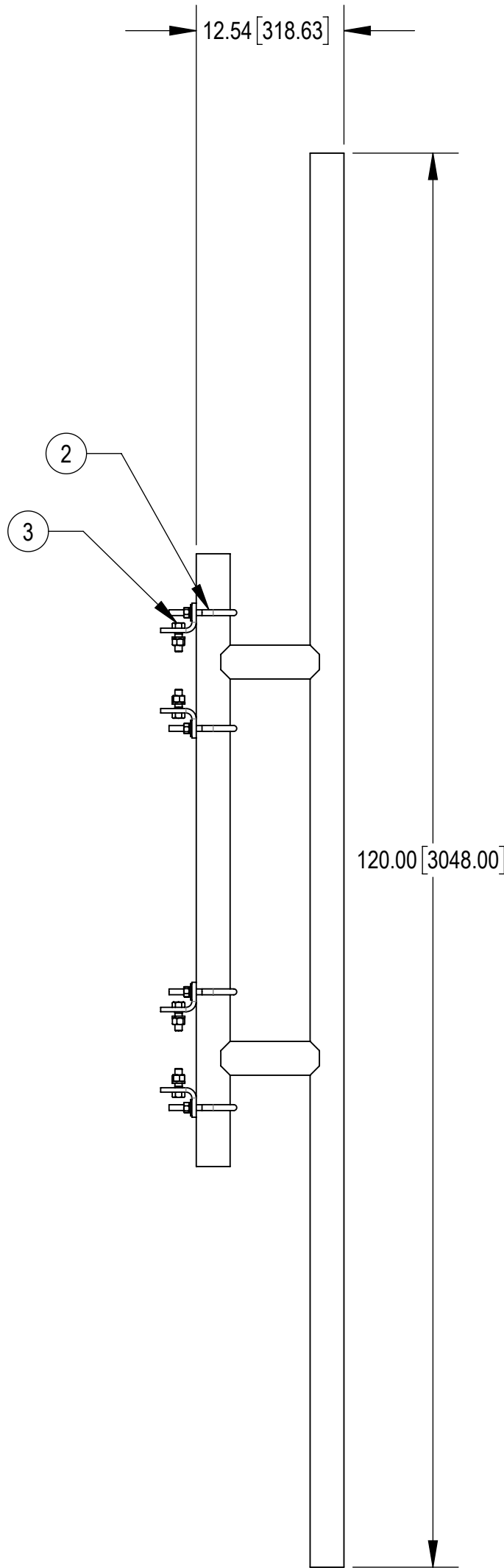


- 1.0 GENERAL NOTES
 - 1.1 ALL METRIC DIMENSIONS ARE IN BRACKETS [X.X]
 - 1.2 FOR PATENT INFO: <https://www.cs-pat.com>
- 2.0 DESIGN NOTES
 - 2.1 ANY HAZARDS OR OBSTRUCTIONS TO THE CLIMBING FACILITY AND SAFETY CLIMB MUST BE IDENTIFIED PRIOR TO INSTALLING THE APPURTENANCE. ADDITIONAL PRODUCTS MAY BE REQUIRED TO MAINTAIN THE INTEGRITY OF THE SAFETY CLIMB. DURING INSTALLATION, TEMPORARY AND/OR PERMANENT PRECAUTIONARY MEASURES SHOULD BE TAKEN TO PRESERVE THE CLIMBING FACILITY AND/OR SAFETY CLIMB.
- 3.0 MANUFACTURING/SPECIAL REQUIREMENTS
 - 3.1 TIGHTEN ALL BOLTS SECURING FLAT PLATES BY THE TURN-OF-NUT METHOD. TIGHTEN ALL U-BOLTS USING TURN-OF-NUT METHOD WITH ATTENTION TO LEAVE EQUAL DISTANCE AND EQUAL FORCE ON EACH LEG OF THE U-BOLT.
- 4.0 TEST
- 5.0 PACKAGING
 - 5.1 PACKAGING SHALL MEET COMMSCOPE REQUIREMENTS PER DOCUMENT IS-PL-3005
 - 5.2 PRINTED DOCUMENT TO BE PLACED INSIDE POLYBAG AND THEN IN SHIPPING CONTAINER
 - 5.3 EXTRA HARDWARE MAY BE SUPPLIED, BAGGED AND SHIPPED

REVISIONS			
REV.	DESCRIPTION	DATE	APPROVED
A	INITIAL RELEASE	JLA 07JUN20	TP 8000041149
B	REPLACED P-100 WITH P100HD, REPLACED U-BOLTS GUB-4240 WITH GUB-4352.	XZ1054 15MAR21	BCROSS IPS10537
C	SFG2289 (ITEM 2) WAS SFG2284 ,ADDED PACKAGE VIEW	LS1146 10NOV23	YZ1080 40182942CMO
D	REPLACED ITEM 5 100HD WITH P-100-HD	LS1146 15AUG24	BA1025 40202562CMO
E	REMOVED SFG2289, MT-382-18, GN-05 & GWL-05	NSUN 29NOV24	BA1025 40209853CMO



MTC4112-PACKAGE



COMPONENT PART NUMBERS PROVIDED FOR ASSEMBLY PURPOSES;
INDIVIDUAL COMPONENTS MAY BE SHIPPED AS PARTS WITHIN AN INCLUDED KIT.

ITEM	PART NO.	DESCRIPTION	QTY.	WEIGHT	NOTE NO.
1	MTC4111	G2 RRU BENT PLATE	4	2.86 LBS	
2	GUB-4352	1/2" X 3" X 5-1/4" GALV U-BOLT	4	0.71 LBS	
3	GB-05205	5/8" X 2" GALV BOLT KIT	8	0.26 LBS	
4	P-100-HD	PANEL ANT STANDOFF BRK 12" 2-7/8" PIPE	1	54.99 LBS	

DENSITY	lbs/in ³
MASS	73.01 lbs
VOLUME	257.80 in ³
SURFACE AREA	3751.23 in ²
HEIGHT	120.0"
LENGTH	15.6"
WIDTH	6.0"

UNLESS OTHERWISE SPECIFIED
DIMENSIONS ARE IN INCHES
INTERPRET PER ANSI Y 14.5M-1994

	NAME	DATE
CE	JLA	06/07/20
RW	NSUN	11/29/2024
RV		
AD	YMENG	12/03/2024
RE	YMENG	12/12/2024
ECN	40209853CMO	



TITLE

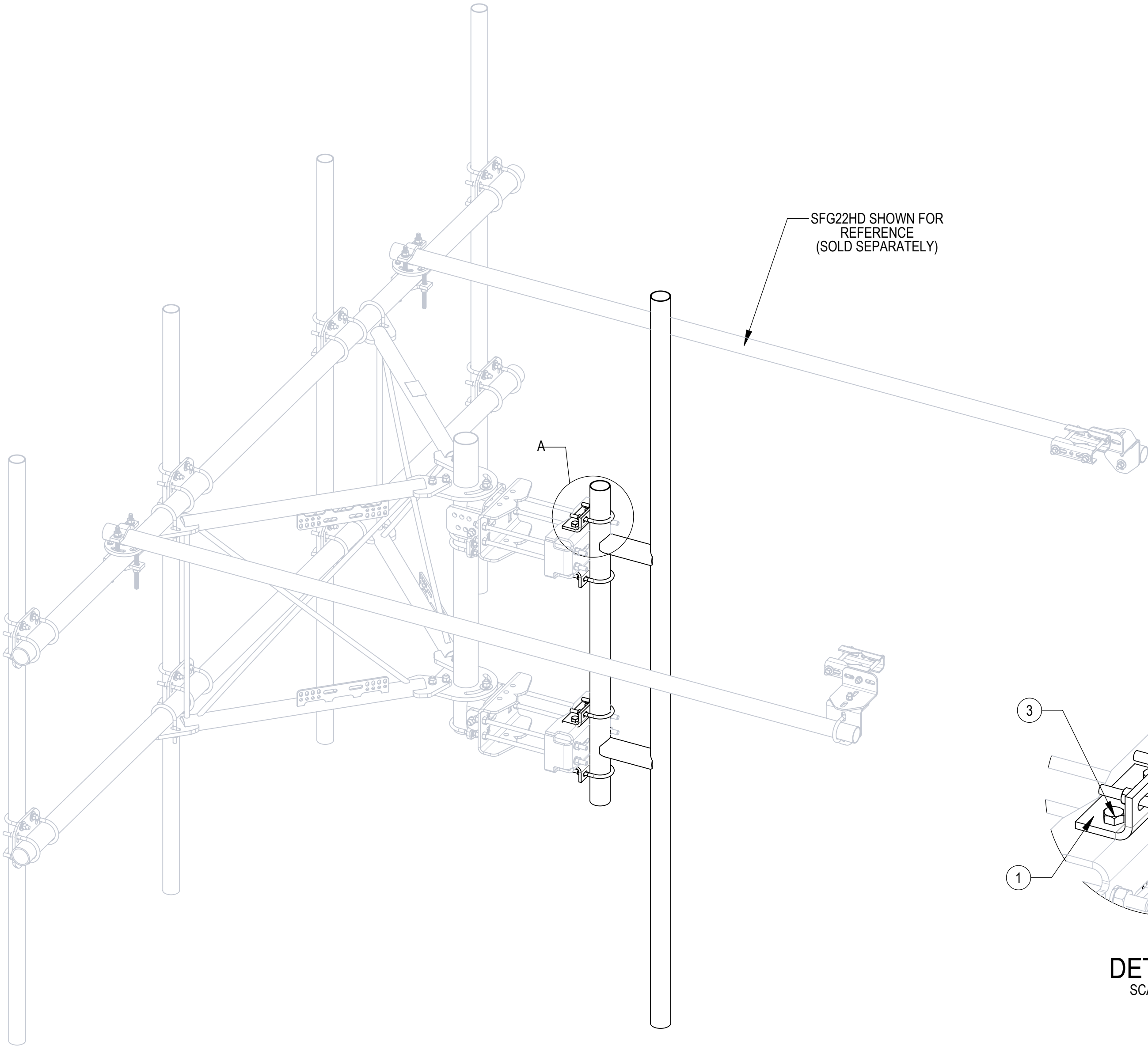
G2 RRU KIT 1 - P100

SCALE
1:12

DOCUMENT NO.

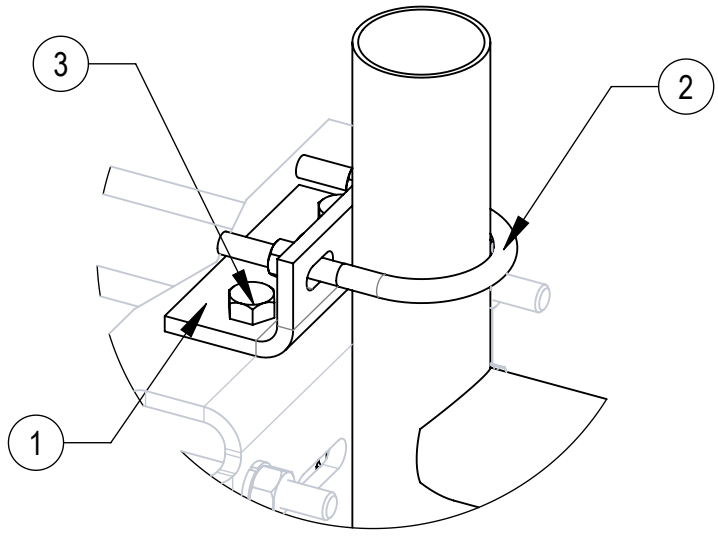
MTC4112

SIZE	WORK AREA	INSL	MODEL			DRAWING			SHEET 1 OF 2
C			VERSION	STATUS	REVISION	VERSION	STATUS	REVISION	
			07	RE	E	07	RE	E	

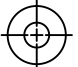
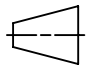


SFG22HD SHOWN FOR
REFERENCE
(SOLD SEPARATELY)

A



DETAIL A
SCALE 1 : 4

COMMScope, INC. OF NORTH CAROLINA						
TITLE G2 RRU KIT 1 - P100						
SIZE C	SCALE 1:12	DOCUMENT NO. MTC4112				
 		DRAWING			SHEET 2 OF 2	
		VERSION 07	STATUS RE	REVISION E		