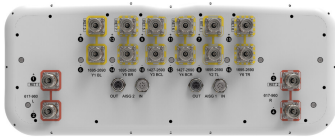


# KKZZV4-65B-R8



16-port sector antenna, 4x 617-960 (R1,R2), 4x 1427-2690 (Y3,Y4) & 8x 1695-2690 (Y1,Y2,Y5,Y6) MHz, 65° HPBW, 8x RET. All Internal RET actuators are connected in “Cascaded SRET” configuration

- Covers Band 71 with up to 4x MIMO support
- Utilize new aerodynamic endcap for wind load optimization

## General Specifications

Antenna Type	Sector
Band	Multiband
Color	Light Gray (RAL 7035)
Grounding Type	RF connector inner conductor and body grounded to reflector and mounting bracket
Performance Note	Outdoor usage
Radome Material	Fiberglass, UV resistant
Reflector Material	Aluminum
RF Connector Interface	4.3-10 Female
RF Connector Location	Bottom
RF Connector Quantity, high band	12
RF Connector Quantity, mid band	0
RF Connector Quantity, low band	4
RF Connector Quantity, total	16

## Remote Electrical Tilt (RET) Information

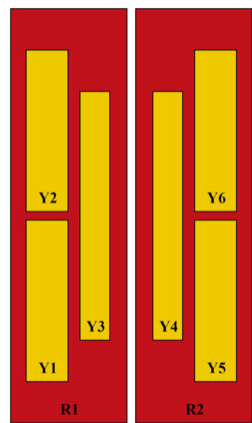
RET Hardware	CommRET v2
RET Interface	8-pin DIN Female   8-pin DIN Male
RET Interface, quantity	2 female   2 male
Input Voltage	10–30 Vdc
Internal RET	High band (6)   Low band (2)
Power Consumption, active state, maximum	8 W
Power Consumption, idle state, maximum	1 W
Protocol	3GPP/AISG 2.0 (Single RET)

# KKZZV4-65B-R8

## Dimensions

Width	498 mm   19.606 in
Depth	197 mm   7.756 in
Length	2100 mm   82.677 in

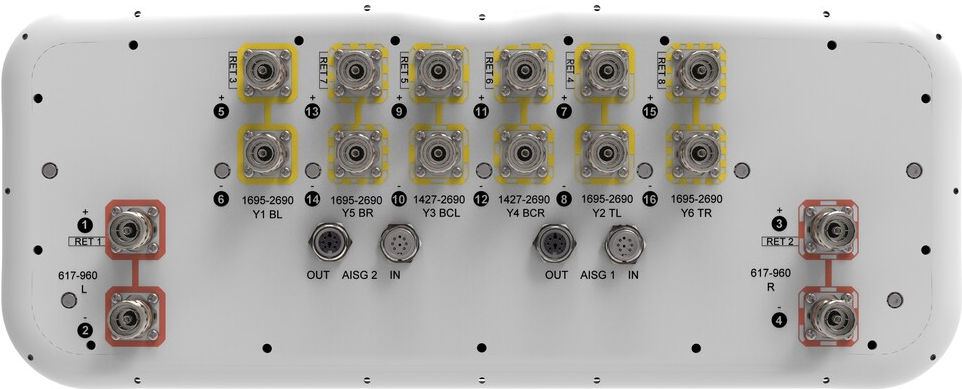
## Array Layout



Array ID	Frequency (MHz)	RF Connector	RET (SRET)	AISG No.	AISG RET UID
R1	617-960	1 - 2	1	AISG1	CPxxxxxxxxxxxxR1
R2	617-960	3 - 4	2	AISG1	CPxxxxxxxxxxxxR2
Y1	1695-2690	5 - 6	3	AISG1	CPxxxxxxxxxxxxY1
Y2	1695-2690	7 - 8	4	AISG1	CPxxxxxxxxxxxxY2
Y3	1427-2690	9 - 10	5	AISG1	CPxxxxxxxxxxxxY3
Y4	1427-2690	11 - 12	6	AISG1	CPxxxxxxxxxxxxY4
Y5	1695-2690	13 - 14	7	AISG1	CPxxxxxxxxxxxxY5
Y6	1695-2690	15 - 16	8	AISG1	CPxxxxxxxxxxxxY6

(Sizes of colored boxes are not true depictions of array sizes)

## Port Configuration



## Electrical Specifications

Impedance	50 ohm
Operating Frequency Band	1427 – 2690 MHz   1695 – 2690 MHz   617 – 960 MHz
Polarization	±45°
Total Input Power, maximum	1,000 W @ 50 °C

# KKZZV4-65B-R8

## Electrical Specifications

Frequency Band, MHz	617–698	698–890	890–960	1427–1518	1695–1920	1920–2200	2300–2690
Gain, dBi	13.7	14.5	14.5	14.7	16	16.9	16.8
Beamwidth, Horizontal, degrees	69	60	60	64	63	56	58
Beamwidth, Vertical, degrees	13.3	11.8	10.5	9.7	8.5	7.6	6.3
Beam Tilt, degrees	2–12	2–12	2–12	2–12	2–12	2–12	2–12
USLS (First Lobe), dB	20	19	16	15	15	16	17
Front-to-Back Ratio at 180°, dB	34	28	26	28	32	31	29
Isolation, Cross Polarization, dB	25	25	25	25	25	25	25
Isolation, Inter-band, dB	25	25	25	25	25	25	25
VSWR   Return loss, dB	1.5   14.0	1.5   14.0	1.5   14.0	1.5   14.0	1.5   14.0	1.5   14.0	1.5   14.0
PIM, 3rd Order, 2 x 20 W, dBc	-150	-150	-150	-150	-150	-150	-150
Input Power per Port at 50°C, maximum, watts	300	300	300	250	250	250	200

## Mechanical Specifications

Wind Loading @ Velocity, frontal	728.0 N @ 150 km/h (163.7 lbf @ 150 km/h)
Wind Loading @ Velocity, lateral	223.0 N @ 150 km/h (50.1 lbf @ 150 km/h)
Wind Loading @ Velocity, maximum	873.0 N @ 150 km/h (196.3 lbf @ 150 km/h)
Wind Loading @ Velocity, rear	501.0 N @ 150 km/h (112.6 lbf @ 150 km/h)
Wind Speed, maximum	241 km/h (150 mph)

## Packaging and Weights

Width, packed	608 mm   23.937 in
Depth, packed	352 mm   13.858 in
Length, packed	2242 mm   88.268 in
Weight, gross	56 kg   123.459 lb
Weight, net	43 kg   94.799 lb

## Regulatory Compliance/Certifications

Agency	Classification
CHINA-ROHS	Below maximum concentration value
ISO 9001:2015	Designed, manufactured and/or distributed under this quality management system

# KKZZV4-65B-R8

---

REACH-SVHC	Compliant as per SVHC revision on <a href="http://www.commscope.com/ProductCompliance">www.commscope.com/ProductCompliance</a>
ROHS	Compliant
UK-ROHS	Compliant



## Included Products

BSAMNT-4	–	Wide Profile Antenna Downtilt Mounting Kit for 2.4 - 4.5 in (60 - 115 mm) OD round members. Kit contains one scissor top bracket set and one bottom bracket set.
----------	---	------------------------------------------------------------------------------------------------------------------------------------------------------------------

## \* Footnotes

<b>Performance Note</b>	Severe environmental conditions may degrade optimum performance
-------------------------	-----------------------------------------------------------------