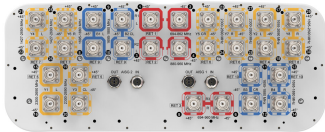


# EGRZZH4T4VV-DR10V1



30-port sector antenna, 2x 694-862 (R1), 2x 880-960 (R2), 2x 694-960 (R3), 4x 1427-2690 (Y4/Y6), 8x 1695-1880 (B1-B4), 8x 2300-2690 (Y1/Y3/Y5/Y7) & 4x 1695-2690 (Y2&Y8) MHz, 65° HPBW, 10x RET.

- All Internal RET actuators are connected in “Cascaded SRET” configuration
- Supports re-configurable antenna sharing capability enabling control of the internal RET system using up to two separate RET compatible OEM radios

This product will be discontinued on: December 31, 2025

## General Specifications

Antenna Type	Sector
Band	Multiband
Grounding Type	RF connector inner conductor and body grounded to reflector and mounting bracket
Performance Note	Outdoor usage
Radome Material	Fiberglass, UV resistant
Radiator Material	Low loss circuit board
Reflector Material	Aluminum
RF Connector Interface	4.3-10 Female
RF Connector Location	Bottom
RF Connector Quantity, high band	24
RF Connector Quantity, mid band	0
RF Connector Quantity, low band	6
RF Connector Quantity, total	30

## Remote Electrical Tilt (RET) Information

RET Interface	8-pin DIN Female   8-pin DIN Male
RET Interface, quantity	2 female   2 male
Input Voltage	10–30 Vdc
Internal RET	High band (7)   Low band (3)
Power Consumption, active state, maximum	8 W

# EGRZZH4T4VV-DR10V1

Power Consumption, idle state, maximum	1 W
Protocol	3GPP/AISG 2.0 (Single RET)

## Dimensions

Width	498 mm   19.606 in
Depth	197 mm   7.756 in
Length	2688 mm   105.827 in
Net Weight, antenna only	67.5 kg   148.812 lb

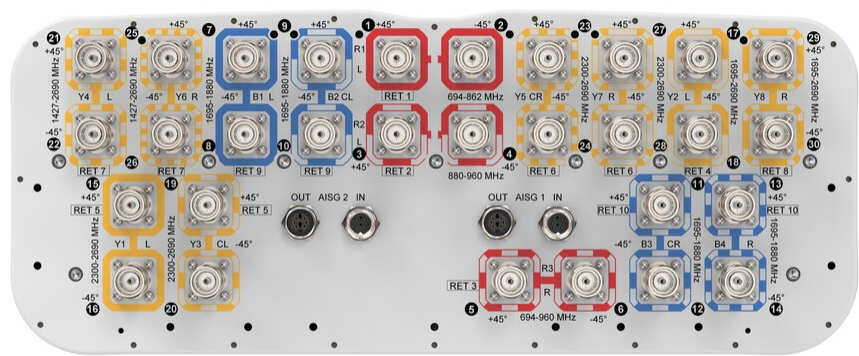
## Array Layout

<

(Sizes of colored boxes are not true depictions of array sizes)

## Port Configuration

# EGRZZH4T4VV-DR10V1



## Electrical Specifications

Impedance	50 ohm
Operating Frequency Band	1427 – 2690 MHz   1695 – 1880 MHz   1695 – 2690 MHz   2300 – 2690 MHz   694 – 862 MHz   694 – 960 MHz   880 – 960 MHz
Polarization	±45°
Total Input Power, maximum	900 W @ 50 °C

## Electrical Specifications

	R1/R3	R2/R3	Y4/Y6	B1-B4
Frequency Band, MHz	694–862	880–960	1427–1518	1695–1880
RF Port	1,2,5,6	3-6	21,22,25,26	7-14
Gain, dBi	15.8	16.1	15.2	15.4
Beamwidth, Horizontal, degrees	69	64	70	69
Beamwidth, Vertical, degrees	8.6	7.5	9.4	7.3
Beam Tilt, degrees	2–14	2–14	2–12	2–12
USLS (First Lobe), dB	17	17	20	19
Front-to-Back Ratio at 180°, dB	32	29	34	32
CPR at Boresight, dB	19	16	21	20
Isolation, Cross Polarization, dB	28	28	25	25
Isolation, Inter-band, dB	28	28	25	25
VSWR   Return loss, dB	1.5   14.0	1.5   14.0	1.5   14.0	1.5   14.0
PIM, 3rd Order, 2 x 20 W, dBc	-150	-150	-150	-150

# EGRZZH4T4VV-DR10V1

Input Power per Port at 50°C, maximum, watts	200	200	200	200
Electrical Specifications				
	Y1/Y3/Y5/Y7	Y1/Y3/Y5/Y7	Y2/Y4/Y6/Y8	Y2/Y4/Y6/Y8
Frequency Band, MHz	2300–2400	2490–2690	1695–2180	2490–2690
RF Port	15,16,19,20,23,24,27,28	15,16,19,20,23,24,27,28	17,18,21,22,25,26,29,30	17,18,21,22,25,26,29,30
Gain, dBi	16.9	17.4	17	17.8
Beamwidth, Horizontal, degrees	58	57	62	56
Beamwidth, Vertical, degrees	5.7	5.2	7.2	5.4
Beam Tilt, degrees	2–12	2–12	2–12	2–12
USLS (First Lobe), dB	16	21	16	17
Front-to-Back Ratio at 180°, dB	32	28	33	31
CPR at Boresight, dB	19	19	20	20
Isolation, Cross Polarization, dB	25	25	25	25
Isolation, Inter-band, dB	25	25	25	25
VSWR   Return loss, dB	1.5   14.0	1.5   14.0	1.5   14.0	1.5   14.0
PIM, 3rd Order, 2 x 20 W, dBc	-150	-150	-150	-150
Input Power per Port at 50°C, maximum, watts	200	150	200	200

## Mechanical Specifications

Wind Loading @ Velocity, frontal	1,070.0 N @ 150 km/h (240.5 lbf @ 150 km/h)
Wind Loading @ Velocity, lateral	375.0 N @ 150 km/h (84.3 lbf @ 150 km/h)
Wind Loading @ Velocity, maximum	1,385.0 N @ 150 km/h (311.4 lbf @ 150 km/h)
Wind Loading @ Velocity, rear	880.0 N @ 150 km/h (197.8 lbf @ 150 km/h)
Wind Speed, maximum	241 km/h (150 mph)

## Packaging and Weights

Width, packed	565 mm   22.244 in
Depth, packed	309 mm   12.165 in
Length, packed	2935 mm   115.551 in
Weight, gross	88.5 kg   195.109 lb

## Regulatory Compliance/Certifications

Agency	Classification
--------	----------------

# EGRZZH4T4VV-DR10V1

CHINA-ROHS	Below maximum concentration value
ISO 9001:2015	Designed, manufactured and/or distributed under this quality management system
REACH-SVHC	Compliant as per SVHC revision on <a href="http://www.commscope.com/ProductCompliance">www.commscope.com/ProductCompliance</a>
ROHS	Compliant
UK-ROHS	Compliant



## Included Products

BSAMNT-4	–	Wide Profile Antenna Downtilt Mounting Kit for 2.4 - 4.5 in (60 - 115 mm) OD round members. Kit contains one scissor top bracket set and one bottom bracket set.
BSAMNT-M4	–	Middle Downtilt Mounting Kit for Long Antennas for 2.4 - 4.5 in (60 - 115 mm) OD round members. Kit contains one scissor bracket set.

## \* Footnotes

Performance Note	Severe environmental conditions may degrade optimum performance
------------------	---