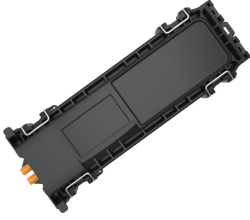


SRC1-U3B2A1BC000



NOVUX™ Specialty Range Closure 50, splice/patch, 2x SC/APC adapter, 2x SC/APC Grade B 900µm pigtail, no splitters, 6 splices, SMOUV® 45mm splice protectors, black, no splitter, 2x NVX-CR-MC-RD-NN cable retentionS

- Modern drop solution offering providers the agility and flexibility to use it in last-mile fiber network applications, both above and below ground
- Protected from harsh conditions by CommScope's Octopus gel sealing technology
- Agnostic to connectivity technologies: splice, connector, field-installable connector for agility and flexibility
- Identification plate for either QR code or customer logo
- QR code and CommScope cTrak® app for one-click access to all product information

Product Classification

Regional Availability	Asia EMEA Latin America
Regional Availability Note	Contact your local CommScope representative for specific availability
Product Type	Single-ended, rectangular fiber closure
Product Brand	NOVUX™
Product Series	SRC50

General Specifications

Cable Capacity, Drop	2 Flat 8.0 x 4.5 mm (0.30 x 0.17 in) 2 Round 1.2–8.0 mm (0.05–0.31 in)
Cable Ports Quantity, total	2 multi-out ports (4 cables)
Cable Sealing Type	Compressed gel
Cable Termination Attachments, quantity	2
Closure Sealing Type	Hinged with latch
Closure Style	Single-ended
Color	Black
Mounting	Handhole Partially buried Pedestal Wall/Pole Mount, mounting kit included
Network Area Type	Drop
Port Type	SC/APC SC/APC
Port, quantity	2
Splice Tray Included, quantity	1

SRC1-U3B2A1BC000

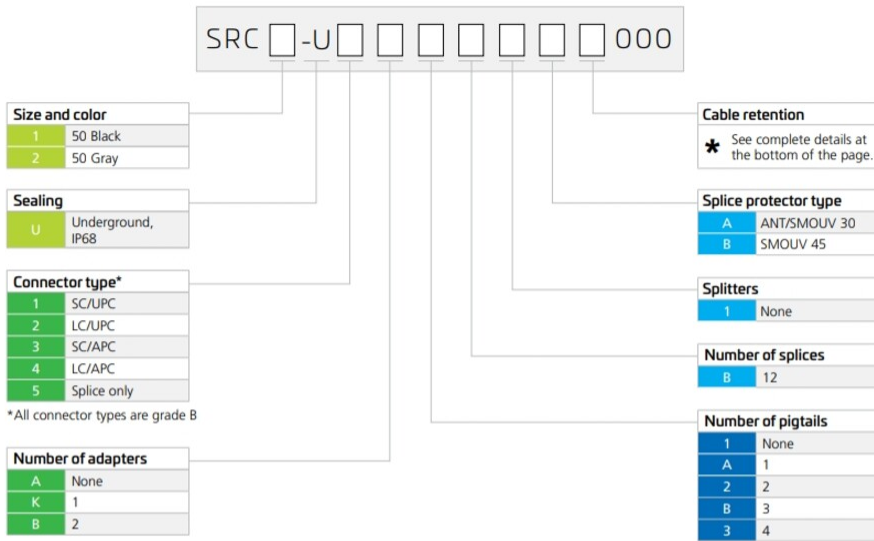
Splice Tray Type Included	6-way, heat shrink
Splicing Capacity, maximum	6
Splicing Capacity, Single Fusion, maximum	6
Splicing Type, Supported	Single fusion
Splitter Type	No splitter
Splitter, quantity	0

Dimensions

Height	267 mm 10.512 in
Width	87 mm 3.425 in
Depth	49 mm 1.929 in
Cable Entry Drop Port Diameter	8 mm (0.31 in) mm

Ordering Tree

SRC1-U3B2A1BC000



Cable retention ^a	Cable Termination Unit (CTU) options				
A None	B	C	D	E	F
B NVX-CR-MC-FT-NN					
C NVX-CR-MC-RD-NN	NVX-CR-MC-FT-NN	NVX-CR-MC-RD-NN	NVX-CR-SA-SM-NN	NVX-CR-TI-SM-NN	NVX-CR-DU-FL-NN
D NVX-CR-SA-SM-NN	<ul style="list-style-type: none"> Flat cable Metal clip Range 3 x 5 to 4 x 8 mm 	<ul style="list-style-type: none"> Round cable Metal clip Range 4 to 6.2 mm 	<ul style="list-style-type: none"> Round cable Dia up to 8 mm Strength member Aramid yarns Single layer 	<ul style="list-style-type: none"> Round cable Dia up to 8 mm Aramid yarns Single layer 	<ul style="list-style-type: none"> Round cable Dia up to 6.2 mm Aramid yarns Dual layer Compact length
E NVX-CR-TI-SM-NN	^a 2 cable attachments are supplied.				
F NVX-CR-DU-FL-NN					

Material Specifications

Material Type Impact-resistant polymer

Optical Specifications

Fiber Type G.657.A1 | G.657.A2 | G.657.B3

Environmental Specifications

Operating Temperature -40 °C to +70 °C (-40 °F to +158 °F)

Environmental Space Above ground | Below ground | Direct burial

Qualification Standards IEC 60529, IP68 + 2 m waterhead | IEC 61753-1, category G

UV Resistance UV stabilized

SRC1-U3B2A1BC000

Water Resistance

Flash test valve at 2 psi (20 kPa)

Packaging and Weights

Packaging quantity

1

Packaging Type

Box | Carton

Regulatory Compliance/Certifications

Agency

ISO 9001:2015

Classification

Designed, manufactured and/or distributed under this quality management system

Included Products

NVX-CR-MC-RD-NN

–

NOVUX™ Cable Termination Unit (CTU) for round cables with 4 to 6,2 mm diameter, metal clip