

FF2HH-6533A-R5



12-Port Sector/multibeam antenna, 4x 617–894 MHz 65° HPBW and 8x 1695–2360 MHz 4x 33° HPBW, 5x RET

- All Internal RET actuators are connected in “Cascaded SRET” configuration
- Uses the 4.3-10 connector which is 40 percent smaller than the 7-16 DIN connector
- Enhances network capacity through six sectors on high band while maintaining low band coverage layer through three sectors with only three antenna faces
- Each High Band antenna down tilt can be independently adjusted for greater flexibility in network optimization

General Specifications

Antenna Type	Multibeam
Band	Multiband
Color	Light Gray (RAL 7035)
Grounding Type	RF connector inner conductor and body grounded to reflector and mounting bracket
Performance Note	Outdoor usage
Radome Material	Fiberglass, UV resistant
Radiator Material	Low loss circuit board
Reflector Material	Aluminum
RF Connector Interface	4.3-10 Female
RF Connector Location	Bottom
RF Connector Quantity, high band	8
RF Connector Quantity, mid band	0
RF Connector Quantity, low band	4
RF Connector Quantity, total	12


Remote Electrical Tilt (RET) Information

RET Hardware	CommRET v2
RET Interface	8-pin DIN Female 8-pin DIN Male
RET Interface, quantity	1 female 1 male
Input Voltage	10–30 Vdc
Internal RET	High band (4) Low band (1)
Power Consumption, active state, maximum	8 W

FF2HH-6533A-R5

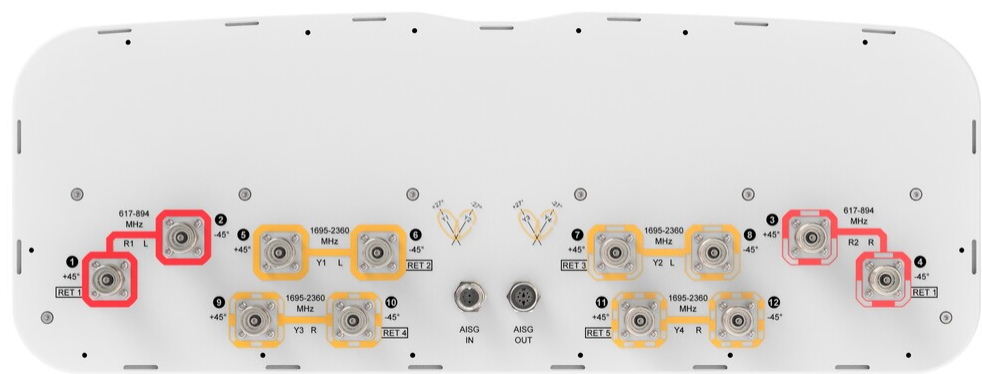
Power Consumption, idle state, maximum	1 W
Protocol	3GPP/AISG 2.0 (Single RET)
Dimensions	
Width	640 mm 25.197 in
Depth	235 mm 9.252 in
Length	1224 mm 48.189 in
Net Weight, without mounting kit	40.1 kg 88.405 lb

Array Layout

	Array	Freq (MHz)	Conns	RET (SRET)	AISG RET UID
	R1	617-894	1-2	1	CPxxxxxxxxxxxxxxxxR1
	R2	617-894	3-4		
	Y1	1695-2360	5-6	2	CPxxxxxxxxxxxxxxxxY1
	Y2	1695-2360	7-8	3	CPxxxxxxxxxxxxxxxxY2
	Y3	1695-2360	9-10	4	CPxxxxxxxxxxxxxxxxY3
	Y4	1695-2360	11-12	5	CPxxxxxxxxxxxxxxxxY4

(Sizes of colored boxes are not true depictions of array sizes)

Port Configuration



FF2HH-6533A-R5

Electrical Specifications

Impedance	50 ohm
Operating Frequency Band	1695 – 2360 MHz 617 – 894 MHz
Polarization	±45°
Total Input Power, maximum	1,000 W @ 50 °C

Electrical Specifications

Frequency Band, MHz	617–698	698–806	806–894	1695–1880	1850–1990	1920–2180	2300–2360
Gain, dBi	12.6	13.2	13.1	18.1	19	19.4	18.7
Beam Centers, Horizontal, degrees				±27	±27	±27	±27
Beamwidth, Horizontal, degrees	72	63	64	36	35	32	29
Beamwidth, Vertical, degrees	21.3	18.8	16.4	7.4	6.9	6.5	5.8
Beam Tilt, degrees	5–22	5–22	5–18	2–10	2–10	2–10	2–10
USLS (First Lobe), dB	16	18	20	16	16	18	19
Front-to-Back Ratio at 180°, dB	29	33	27	35	36	36	31
Isolation, Cross Polarization, dB	25	25	25	25	25	25	25
Isolation, Inter-band, dB	25	25	25	25	25	25	25
VSWR Return loss, dB	1.5 14.0	1.5 14.0	1.5 14.0	1.5 14.0	1.5 14.0	1.5 14.0	1.5 14.0
PIM, 3rd Order, 2 x 20 W, dBc	-150	-153	-153	-153	-153	-153	-153
Input Power per Port at 50°C, maximum, watts	250	250	250	200	200	200	200

Mechanical Specifications

Wind Loading @ Velocity, frontal	505.0 N @ 150 km/h (113.5 lbf @ 150 km/h)
Wind Loading @ Velocity, lateral	156.0 N @ 150 km/h (35.1 lbf @ 150 km/h)
Wind Loading @ Velocity, maximum	688.0 N @ 150 km/h (154.7 lbf @ 150 km/h)
Wind Loading @ Velocity, rear	520.0 N @ 150 km/h (116.9 lbf @ 150 km/h)
Wind Speed, maximum	241 km/h (150 mph)

Packaging and Weights

Width, packed	752 mm 29.606 in
---------------	--------------------

FF2HH-6533A-R5

Depth, packed	387 mm 15.236 in
Length, packed	1379 mm 54.291 in
Weight, gross	52.5 kg 115.743 lb

Regulatory Compliance/Certifications

Agency	Classification
ISO 9001:2015	Designed, manufactured and/or distributed under this quality management system

Included Products

BSAMNT-3	–	Wide Profile Antenna Downtilt Mounting Kit for 2.4 - 4.5 in (60 - 115 mm) OD round members. Kit contains one scissor top bracket set and one bottom bracket set.
----------	---	--

* Footnotes

Performance Note	Severe environmental conditions may degrade optimum performance
------------------	---

BSAMNT-3



Wide Profile Antenna Downtilt Mounting Kit for 2.4 - 4.5 in (60 - 115 mm) OD round members. Kit contains one scissor top bracket set and one bottom bracket set.

Product Classification

Product Type Downtilt mounting kit

General Specifications

Application Outdoor

Color Silver

Dimensions

Compatible Diameter, maximum 115 mm | 4.528 in

Compatible Diameter, minimum 60 mm | 2.362 in

Weight, net 6.2 kg | 13.669 lb

Material Specifications

Material Type Galvanized steel

Packaging and Weights

Included Brackets | Hardware

Packaging quantity 1

Weight, gross 6.4 kg | 14.11 lb

Regulatory Compliance/Certifications

Agency	Classification
CE	Compliant with the relevant CE product directives
CHINA-ROHS	Below maximum concentration value
ISO 9001:2015	Designed, manufactured and/or distributed under this quality management system
REACH-SVHC	Compliant as per SVHC revision on www.andrew.com/ProductCompliance
ROHS	Compliant
UK-ROHS	Compliant

