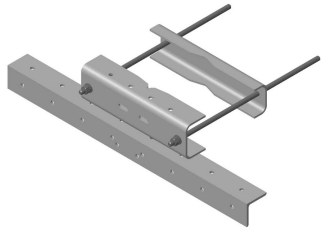


MDL-SSA4



Tower Leg Mounted Microwave Antenna Channel Support Kit, 48 in

Product Classification

Product Type Microwave strut support

General Specifications

Mounting Straight or tapered legs up to 406.4 mm (16 in) OD

Pipe, quantity 0

Tower Taper Non-tapered

Dimensions

Height 152.4 mm | 6 in

Width 1,219.2 mm | 48 in

Length 203.2 mm | 8 in

Mounting Diameter, maximum 406.4 mm | 16 in

Mounting Diameter, minimum 50.8 mm | 2 in

Material Specifications

Material Type Hot dip galvanized steel

Mechanical Specifications

Wind Rating For Specifications, please contact your local ANDREW representative

Packaging and Weights

Included Angle | Attachment hardware | Clamps

Packaging quantity 1

Weight, net 40.8 kg | 89.948 lb

Regulatory Compliance/Certifications

Agency	Classification
--------	----------------

MDL-SSA4

ISO 9001:2015 Designed, manufactured and/or distributed under this quality management system

* Footnotes

Wind Rating BWS—Base Wind Speed; FBC—Florida Building Code