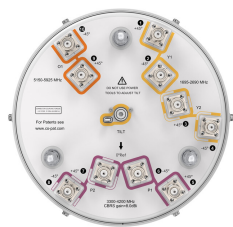


VVSSP-360S-M-V4



10-port small cell antenna, 4x 1695–2690, 4x3300-4200 and 2x 5150-5925 MHz. 360° Horizontal Beamwidth, MANUAL ELECTRICAL TILT

This product will be discontinued on: December 31, 2025

General Specifications

Antenna Type	Omni
Band	Multiband
Color	Light Gray (RAL 7035)
Grounding Type	RF connector inner conductor and body grounded to reflector and mounting bracket
Performance Note	Outdoor usage
Radome Material	ASA
Radiator Material	Aluminum Low loss circuit board
Reflector Material	Aluminum
RF Connector Interface	4.3-10 Female
RF Connector Location	Bottom
RF Connector Quantity, high band	10
RF Connector Quantity, mid band	0
RF Connector Quantity, low band	0
RF Connector Quantity, total	10

Dimensions

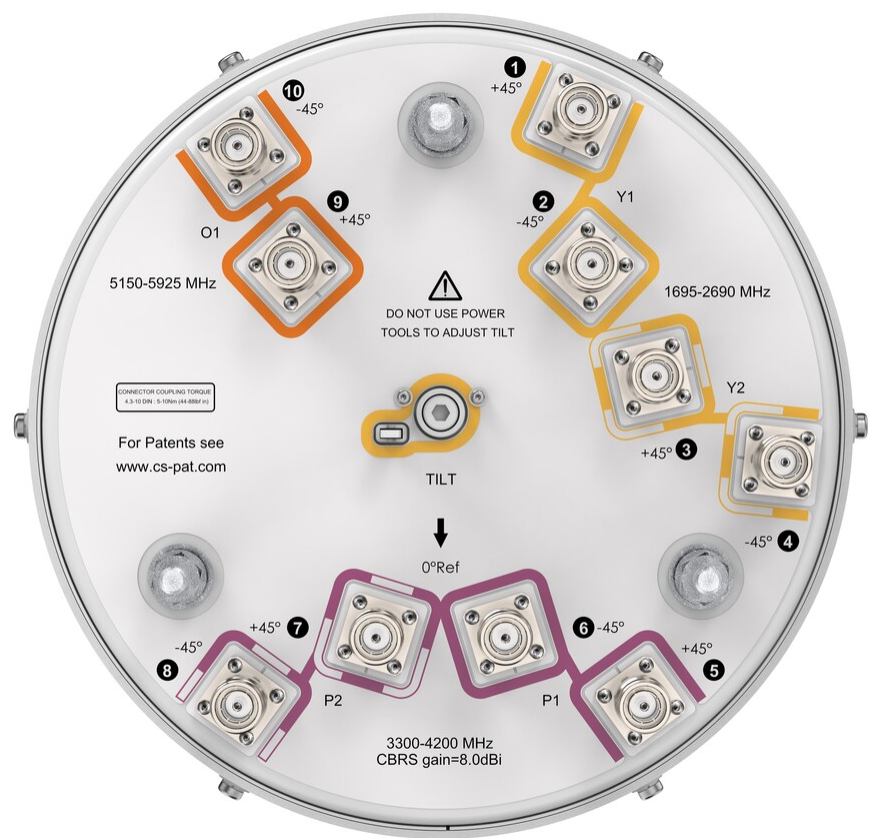
Length	610 mm 24.016 in
Net Weight, without mounting kit	13 kg 28.66 lb
Outer Diameter	305 mm 12.008 in

5 GHz Port Power Table

5 GHz FCC Power Requirements				
U-NII Band	U-NII 1	U-NII 2A	U-NII 2C	U-NII 3
Frequency (MHz)	5150 - 5250	5250 - 5350	5470 - 5725	5725 - 5850
Max Input power per port to align with FCC Title 47 Part 15 (Watts)	0.5	0.125	0.125	0.5

Port Configuration

VVSSP-360S-M-V4



Electrical Specifications

Impedance	50 ohm
Operating Frequency Band	1695 – 2690 MHz 3300 – 4200 MHz 5150 – 5925 MHz
Polarization	±45°
Total Input Power, maximum	500 W

Electrical Specifications

Frequency Band, MHz	1695–1880	1850–1990	1920–2180	2300–2690	3300–3550	3550–3700	3700–4200	5150–5925
Gain, dBi	7.8	8.4	8.5	8.4	7.3	7.8	9.3	4.3
Beamwidth, Horizontal, degrees	360	360	360	360	360	360	360	360
Beamwidth, Vertical, degrees	21.2	19.5	18.3	15.8	30.4	29.9	32.9	24.6
Beam Tilt, degrees	2–10	2–10	2–10	2–10	0	0	0	0
USLS (First Lobe), dB	14	14	14	12	14	14	14	
Isolation, Cross Polarization, dB	25	25	25	25	25	25	25	25

VVSSP-360S-M-V4

Isolation, Inter-band, dB	25	25	25	25	25	25	25	25
VSWR Return loss, dB	1.5 14.0	1.5 14.0	1.5 14.0	1.5 14.0	1.5 14.0	1.5 14.0	1.5 14.0	1.5 14.0
PIM, 3rd Order, 2 x 20 W, dBc	-153	-153	-153	-153	-140	-140	-140	
Input Power per Port, maximum, watts	125	125	125	125	100	100	100	10
Input Power per Port at 50°C, maximum, watts	75	75	75	75	50	50	50	5

Mechanical Specifications

Wind Loading @ Velocity, frontal	102.0 N @ 150 km/h (22.9 lbf @ 150 km/h)
Wind Loading @ Velocity, lateral	102.0 N @ 150 km/h (22.9 lbf @ 150 km/h)
Wind Loading @ Velocity, maximum	102.0 N @ 150 km/h (22.9 lbf @ 150 km/h)
Wind Loading @ Velocity, rear	102.0 N @ 150 km/h (22.9 lbf @ 150 km/h)
Wind Speed, maximum	241.4 km/h (150 mph)

Packaging and Weights

Width, packed	418 mm 16.457 in
Depth, packed	404 mm 15.906 in
Length, packed	888 mm 34.961 in
Weight, gross	17.5 kg 38.581 lb

Regulatory Compliance/Certifications

Agency	Classification
CHINA-ROHS	Below maximum concentration value
ISO 9001:2015	Designed, manufactured and/or distributed under this quality management system
REACH-SVHC	Compliant as per SVHC revision on www.commscope.com/ProductCompliance
ROHS	Compliant
UK-ROHS	Compliant



* Footnotes

Performance Note	Severe environmental conditions may degrade optimum performance
------------------	---