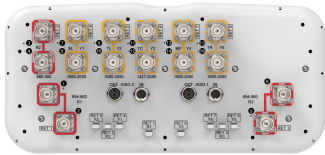


EGRZV4-65D-R8N43



16-ports sector antenna, 2x 694-862 (R1), 2x 880-960 (R2), 2x 694-960 (R3), 2x 1427-2690 (Y3), 8x 1695-2690 (Y1,Y2,Y4,Y5) MHz ,65° HPBW, 8x RET

- Retractable tilt indicator rods
- 8 Internal RET's provide independent electrical tilt control for each array
- All Internal RET actuators are connected in "Cascaded SRET" configuration
- Supports re-configurable antenna sharing capability enabling control of the internal RET system using up to two separate RET compatible OEM radios
- Antenna shape optimized for wind load reduction

General Specifications

Antenna Type	Sector with internal RET
Band	Multiband
Color	Light Gray (RAL 7035)
Grounding Type	RF connector inner conductor and body grounded to reflector and mounting bracket
Performance Note	Outdoor usage
Radome Material	Fiberglass, UV resistant
Reflector Material	Aluminum
RF Connector Interface	4.3-10 Female
RF Connector Location	Bottom
RF Connector Quantity, high band	10
RF Connector Quantity, mid band	0
RF Connector Quantity, low band	6
RF Connector Quantity, total	16

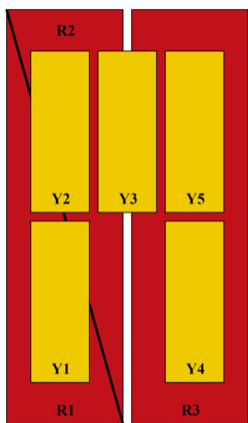
Remote Electrical Tilt (RET) Information

RET Hardware	CommRET v2
RET Interface	8-pin DIN Female 8-pin DIN Male
RET Interface, quantity	2 female 2 male
Input Voltage	10–30 Vdc
Internal RET	High band (5) Low band (3)
Power Consumption, active state, maximum	8 W

EGRZV4-65D-R8N43

Power Consumption, idle state, maximum	1 W
Protocol	3GPP/AISG 2.0 (Single RET)
Dimensions	
Width	430 mm 16.929 in
Depth	197 mm 7.756 in
Length	2769 mm 109.016 in
Net Weight, antenna only	55.8 kg 123.018 lb

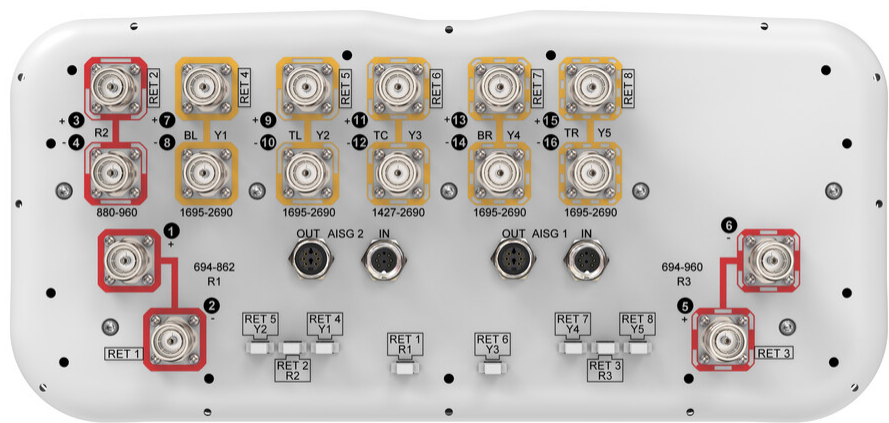
Array Layout



Array ID	Frequency (MHz)	RF Connector	RET (SRET)	AISG RET UID
R1	694-862	1 - 2	1	CPxxxxxxxxxxxxR1
R2	880-960	3 - 4	2	CPxxxxxxxxxxxxR2
R3	694-960	5 - 6	3	CPxxxxxxxxxxxxR3
Y1	1695-2690	7 - 8	4	CPxxxxxxxxxxxxY1
Y2	1695-2690	9 - 10	5	CPxxxxxxxxxxxxY2
Y3	1427-2690	11 - 12	6	CPxxxxxxxxxxxxY3
Y4	1695-2690	13 - 14	7	CPxxxxxxxxxxxxY4
Y5	1695-2690	15 - 16	8	CPxxxxxxxxxxxxY5

(Sizes of colored boxes are not true depictions of array sizes)

Port Configuration



EGRZV4-65D-R8N43

Electrical Specifications

Impedance	50 ohm
Operating Frequency Band	1427 – 2690 MHz 1695 – 2690 MHz 694 – 862 MHz 694 – 960 MHz 880 – 960 MHz
Polarization	±45°
Total Input Power, maximum	900 W @ 50 °C

Electrical Specifications

	R1	R2	R3	Y3	Y3	Y3	Y1,Y2,Y4,Y5	Y1,Y2,Y4,Y5
Frequency Band, MHz	694–862	880–960	694–960	1427–1518	1695–2180	2300–2690	1695–2200	2300–2690
RF Port	1,2	3,4	5,6	11,12	11,12	11,12	7-10,13-16	7-10,13-16
Gain, dBi	15.5	16.1	16.4	16.3	17.6	18.1	17.4	18.1
Beamwidth, Horizontal, degrees	59	54	58	58	56	62	59	58
Beamwidth, Vertical, degrees	7.3	6.3	6.9	7.2	5.6	4.4	6.2	5
Beam Tilt, degrees	2–12	2–12	2–12	2–12	2–12	2–12	2–12	2–12
USLS (First Lobe), dB	17	18	15	20	20	20	15	16
Front-to-Back Ratio at 180°, dB	34	31	31	35	31	32	32	32
CPR at Boresight, dB	22	25	23	17	17	16	17	17
Isolation, Cross Polarization, dB	27	27	27	26	26	26	27	27
Isolation, Inter-band, dB	27	27	27	27	27	27	27	27
VSWR Return loss, dB	1.5 14.0	1.5 14.0	1.5 14.0	1.5 14.0	1.5 14.0	1.5 14.0	1.5 14.0	1.5 14.0
PIM, 3rd Order, 2 x 20 W, dBc	-153	-153	-153	-153	-153	-153	-153	-153
Input Power per Port at 50°C, maximum, watts	300	300	300	250	250	200	250	200

Mechanical Specifications

Wind Loading @ Velocity, frontal	680.0 N @ 150 km/h (152.9 lbf @ 150 km/h)
Wind Loading @ Velocity, lateral	347.0 N @ 150 km/h (78.0 lbf @ 150 km/h)
Wind Loading @ Velocity, maximum	1,020.0 N @ 150 km/h (229.3 lbf @ 150 km/h)
Wind Loading @ Velocity, rear	434.0 N @ 150 km/h (97.6 lbf @ 150 km/h)
Wind Speed, maximum	241 km/h (150 mph)

Packaging and Weights

EGRZV4-65D-R8N43

Width, packed	530 mm 20.866 in
Depth, packed	356 mm 14.016 in
Length, packed	2897 mm 114.055 in
Weight, gross	76.8 kg 169.315 lb

Regulatory Compliance/Certifications

Agency	Classification
CHINA-ROHS	Below maximum concentration value
ISO 9001:2015	Designed, manufactured and/or distributed under this quality management system
REACH-SVHC	Compliant as per SVHC revision on www.commscope.com/ProductCompliance
ROHS	Compliant
UK-ROHS	Compliant



Included Products

BSAMNT-4	–	Wide Profile Antenna Downtilt Mounting Kit for 2.4 - 4.5 in (60 - 115 mm) OD round members. Kit contains one scissor top bracket set and one bottom bracket set.
BSAMNT-M4	–	Middle Downtilt Mounting Kit for Long Antennas for 2.4 - 4.5 in (60 - 115 mm) OD round members. Kit contains one scissor bracket set.

* Footnotes

Performance Note	Severe environmental conditions may degrade optimum performance
------------------	---

BSAMNT-4



Wide Profile Antenna Downtilt Mounting Kit for 2.4 - 4.5 in (60 - 115 mm) OD round members. Kit contains one scissor top bracket set and one bottom bracket set.

Product Classification

Product Type Downtilt mounting kit

General Specifications

Application Outdoor

Color Silver

Dimensions

Compatible Diameter, maximum 115 mm | 4.528 in

Compatible Diameter, minimum 60 mm | 2.362 in

Weight, net 6.5 kg | 14.33 lb

Material Specifications

Material Type Galvanized steel

Packaging and Weights

Included Brackets | Hardware

Packaging quantity 1

Regulatory Compliance/Certifications

Agency	Classification
CHINA-ROHS	Below maximum concentration value
ISO 9001:2015	Designed, manufactured and/or distributed under this quality management system
REACH-SVHC	Compliant as per SVHC revision on www.andrew.com/ProductCompliance
ROHS	Compliant
UK-ROHS	Compliant



BSAMNT-M4



Middle Downtilt Mounting Kit for Long Antennas for 2.4 - 4.5 in (60 - 115 mm) OD round members. Kit contains one scissor bracket set.

Product Classification

Product Type Downtilt mounting kit

General Specifications

Application Outdoor

Color Silver

Dimensions

Compatible Diameter, maximum 115 mm | 4.528 in

Compatible Diameter, minimum 60 mm | 2.362 in

Weight, net 4.6 kg | 10.141 lb

Material Specifications

Material Type Galvanized steel

Packaging and Weights

Included Brackets | Hardware

Packaging quantity 1

Regulatory Compliance/Certifications

Agency	Classification
CHINA-ROHS	Below maximum concentration value
ISO 9001:2015	Designed, manufactured and/or distributed under this quality management system
REACH-SVHC	Compliant as per SVHC revision on www.andrew.com/ProductCompliance
ROHS	Compliant
UK-ROHS	Compliant

