



Preferred ordering guide for NETCONNECT® solutions

Asia-Pacific Ordering Guide | Q3 2024

YOUR NETWORK
YOUR FUTURE



Table of contents

NETCONNECT structured cabling solutions	5
Engineered for what matters most.....	5
Fueling Partner-customer success	5
Benefits for Partners.....	5
Benefits for customers	6
Performance assured in writing	6
Copper solutions.....	7
Category 6A F/UTP	7
NETCONNECT® Category 6A F/UTP Cables.....	7
CommScope® SL Discrete Distribution Module (DDM) Patch Panels, Unloaded	7
NETCONNECT Category 6A S/FTP, High-density Solution	8
NETCONNECT SLX Series Information Outlet without Dust Cover.....	8
NETCONNECT SLX Series Information Outlet with Dust Cover	9
NETCONNECT Eco-friendly Shielded Information Outlets	9
Color Caps	9
NETCONNECT Angled Faceplates	10
NETCONNECT Category 6A S/FTP Patch Cords	10
NETCONNECT Category 6A S/FTP, High-density Solution.....	10
Category 6A U/UTP.....	11
Category 6A U/UTP Cables	11
CommScope Dynamic Angled Distribution Module Panels, Category 6A UTP.....	11
CommScope Distribution Module (DM) Patch Panels, Category 6A UTP.....	12
NETCONNECT SL Series Information Outlet, without Dust Cover.....	12
CommScope Ceiling Connector Assembly (CCA) Solution.....	12
NETCONNECT Category 6A U/UTP Patch cords	13
NETCONNECT Category 6A U/UTP, High-density Solution.....	13
Category 6 U/UTP	14
NETCONNECT Category 6 U/UTP Cables	14
CommScope Dynamic Angled Distribution Module Panels, Category 6 UTP	14
CommScope SL Discrete Distribution Module (DDM) Patch Panels, Unloaded	14
CommScope SL Discrete Distribution Module (DDM) Patch Panel, Loaded	14
NETCONNECT SL Series Information Outlet, without Dust Cover.....	15
NETCONNECT SL Series Information Outlet, with Dust Cover.....	15
NETCONNECT SL Series Information Outlet, Packaged with a Clipsal Bezel, fit to Clipsal/ Schneider Faceplates	16
NETCONNECT® KJ Series Information Outlet, without Dust Cover, to use with Keystone Faceplates of Other Suppliers.....	16
NETCONNECT Category 6 U/UTP, High Density Solution.....	16
NETCONNECT Category 6 U/UTP Patch Cords	17
Category 6 F/UTP.....	18
NETCONNECT Category 6 F/UTP Cables.....	18
CommScope SL Discrete Distribution Module (DDM) Patch Panels, Unloaded	18

Table of contents

NETCONNECT Category 6 FTP, High-density Solutions	18
NETCONNECT SLX Series Information Outlet with Dust Cover	19
NETCONNECT SLX Series Information Outlet without Dust Cover	19
NETCONNECT Category 6 F/UTP Patch Cords.....	19
Telephone – ADSL Systems.....	20
LSA-PLUS® Disconnect Module.....	20
LSA-PLUS Distribution Rack & Backmount Frame (unloaded).....	20
LSA-PLUS Wall Boxes (unloaded).....	20
ComProtect Overvoltage Protection.....	21
LSA-PLUS Insertion Tool with Sensor.....	21
Modular RJ45 Plug & Termination Tools.....	22
NETCONNECT Category 6A RJ45 Modular Plug & Tool.....	22
NETCONNECT Category 6 RJ45 Modular Plug & Tool	22
NETCONNECT Modular Boot	23
NETCONNECT Modular Plug Color Clip (Used with NPC Patch Cords)	23
Faceplate & Accessories	24
NETCONNECT Faceplate US Style.....	24
NETCONNECT Faceplate UK Style.....	24
NETCONNECT Single and Dual Outlets 45 x 45 mm (“Mosaic”), used with Legrand Faceplate.....	24
NETCONNECT Boxes.....	25
NETCONNECT Consolidation Point	26
NETCONNECT SL Tool	26
Horizontal Cable Management	27
Outdoor Application.....	28
NETCONNECT Category 6.....	28
NETCONNECT Category 6A F/UTP	28
Powered Fiber solutions	29
1 and 2 Port PoE Extenders	30
Power Extenders/Fiber Pass-Thru.....	30
Power Supplies	30
Surface Mount Boxes	31
Plenum Powered Fiber Cable Transition Box.....	31
FiberGuide	32
Fiber Solutions.....	34
Fiber Optic Cable	34
CommScope Indoor, LSZH & OFNR Dual Rate Cable - APAC	34
CommScope Indoor, OFNP Distribution Cable - APAC.....	34
CommScope Indoor/Outdoor Gel LSZH Central Tube Cable - APAC	35
CommScope Indoor/Outdoor Gel LSZH Stranded Loose Tube Cable - APAC	35
CommScope Indoor/Outdoor Gel LSZH Central Loose Tube Cable, Armored - APAC	35
CommScope Indoor/Outdoor Gel LSZH Stranded Loose Cable, Armored - APAC.....	35
CommScope Indoor/Outdoor LSZH Distribution Cable - APAC	36

Table of contents

CommScope Indoor/Outdoor, Figure 8 Drop Cable - APAC	36
CommScope Outside Plant Gel Central Tube Cable - APAC	37
CommScope Outside Plant Gel Loose Tube Cable - APAC	37
CommScope Outside Plant Gel Central Tube Cable, Armored - APAC.....	37
CommScope Outside Plant Gel Loose Tube Cable, Armored - APAC	37
Fiber panel portfolios.....	38
EPX panels for G2 modules, cassettes and adapter packs.....	38
G2 Modules	39
G2 Splice Cassettes.....	40
G2 Adapter Packs	41
Standard density EPX panels for LGX/1000-style modules, cassettes and adapter packs	42
LGX/1000 Style Panels and Wall Boxes.....	42
LGX/1000 Style Splicing Cassettes	42
APAC Local Splicing Solutions	43
1U 36F/72F Fiber Splicing Shelf	43
1U 12F/24F/48F/96F Fiber Splicing Shelf.....	43
FMS All-In-One Splicing Panel	44
Fiber Connectors and Adapters	45
QWIK® II Connector Kits	45
APAC Local LC/SC Adapters	45
Qwik-Fuse Connector Kits, Tools and Accessories	46
Qwik-Fuse MPO Connector Kits	46
Qwik MPO connectors and tool kit.....	48
Qwik-Fuse MPO connector kits.....	49
Method A MPO Trunk and Patch Cords.....	50
LL Fiber Optic Patch Cords	51
ULL Fiber Optic Patch Cords.....	51
Fiber Pigtails	52
APAC Local Fiber Patch Cords and Pigtails.....	53
CAF CommScope Armored Fiber Patch Cords.....	54
Rack and Cabinet.....	55
CommScope Open Rack - ASEAN.....	55
CommScope Wall Mount Rack.....	55
CommScope Rack Accessories - Shelves.....	56
CommScope Rack Accessories - Fans	56
CommScope Rack Accessories - AC Power Distribution Units.....	56

NETCONNECT structured cabling solutions

Engineered for what matters most

Those responsible for enterprise networks are under constant pressure to address the evolving demands of users and applications while protecting the bottom line. This requires a network infrastructure that delivers best-in-class operational performance and is engineered to maximize network value. Since 1990, network managers, installers and distributors have relied on CommScope NETCONNECT structured cabling solutions to improve performance and reliability while lowering the total cost of network ownership.



NETCONNECT solutions are a complete portfolio of standards-based fiber and copper solutions. High-performance cabling, connectors, panels, cords and jacks support any network application: voice, data, security, audio, video and building control; from the entrance facility to the desktop, in-building and across campus, today and tomorrow.

Fast to deploy, sustainable and easy to manage, all NETCONNECT solutions and components meet or exceed the structured cabling standards for enterprise applications, an assurance backed by CommScope's 25-Year Extended Warranty and Application Assurance.

Engineered, manufactured and supported by the world leader in structured cabling solutions, NETCONNECT solutions provide the consistent product availability and quality that keeps networks moving forward. The perfect balance of performance and value.

Fueling Partner-customer success

With a global network of certified NETCONNECT Partners, CommScope provides the opportunities, resources, expertise and technologies that empower NETCONNECT Partners and customers alike.

Benefits for Partners

CommScope NETCONNECT Partners leverage a wide variety of opportunities, including:

- Expanded visibility across a global customer network
- Access to CommScope-certified projects
- Opportunity to offer CommScope warranties
- Early adoption of the latest NETCONNECT solutions and technologies
- Anytime access to online education and training
- Guidance on design, installation and maintenance best practices
- Peer-to-peer support from a diverse, global ecosystem
- Access to exclusive Partner portals and enablement tools

To learn more about the benefits of becoming a CommScope Partner, visit the [PartnerPRO[®] web page](#).

Benefits for customers

Customers who work with CommScope Partners stand to gain multiple competitive advantages, such as:

- Designs that leverage the full capabilities and value of NETCONNECT solutions
- Fast, accurate deployment that meets applicable warranty requirements
- Clear upgrade paths that can minimize CapEx and OpEx
- More uptime and increased network reliability
- Global consistency of service and fast, certified installations
- CommScope warranty protection
- Greater network security, stability and efficiency for confident peace of mind

To learn more about the benefits of using a CommScope Partner, [download the brochure](#).

Performance assured in writing

The entire NETCONNECT portfolio is backed by CommScope's 25-Year Extended Product Warranty and Application Assurance, giving you the product and performance assurances you need to grow with confidence. This unique blanket of support brings peace of mind, in writing, that:

- All NETCONNECT products will meet or exceed their performance specifications for at least 25 years.
- NETCONNECT cabling channels will support all warranted applications.
- Any NETCONNECT product that does not perform to the stated specifications will be replaced at no cost, whether a problem arises in the first year or the 25th.

Only the best solution on the market can afford to offer this degree of warranty protection.

For details on CommScope's 25-Year Extended Product Warranty, visit [CommScope.com/Resources/Warranties](https://www.commscope.com/Resources/Warranties).

Beware of CommScope look-alikes

CommScope is a trusted global provider of high-performance network infrastructure solutions. Counterfeiters try to exploit our reputation with illegal counterfeit products, the use of which can lead to severe consequences.

For example, counterfeiters use cheap alloys or aluminum instead of copper, or jacket and connector materials that don't meet the flammability requirements for specific applications. More than affecting network performance, these products can put safety and property at risk, violate building codes or leave you open to negligence and fraud.

So CommScope gives you the tools to validate your solutions and verify genuine CommScope quality. Every CommScope package features a security hologram and scannable QR code that enables you to verify the authenticity of your product in seconds. Remember, only CommScope-verified products will deliver CommScope-branded performance.

Copper solutions

Category 6A F/UTP



NETCONNECT CATEGORY 6A F/UTP CABLES

MATERIAL ID	DESCRIPTION	RATE	COLOR
884024508/10	NETCONNECT CS44Z1, Category 6A Cable, 4 pair, 23 AWG, F/UTP, LSZH, 305M, Reel, White	LSZH	White
884028508/10	NETCONNECT CS44Z1, Category 6A Cable, 4 pair, 23 AWG, F/UTP, LSZH, 305M, Reel, Blue	LSZH	Blue
884020108/10	NETCONNECT CS44CM, Category 6A Cable, 4 pair, 23 AWG, F/UTP, LSZH, 305M, Reel, Blue	CM	White



COMMSCOPE SL DISCRETE DISTRIBUTION MODULE (DDM) PATCH PANELS, UNLOADED

MATERIAL ID	PRODUCT NUMBER	DESCRIPTION	SPACE	PORT	TYPE
760237046	CPP-SDDM-SL-1U-24	Shielded Discrete Distribution Module Panel, SL, 1U, 24 port, Black	1U	24	Straight
760237047	CPP-SDDM-SL-2U-48	Shielded Discrete Distribution Module Panel, SL, 2U, 48 port, Black	2U	48	Straight
760237048	CPPA-SDDM-SL-1U-24	Shielded Angled Discrete Distribution Module Panel, SL, 1U, 24 port, Black	1U	24	Angled
760237049	CPPA-SDDM-SL-2U-48	Shielded Angled Discrete Distribution Module Panel, SL, 2U, 48 port, Black	2U	48	Angled
760237050	CPPR-SDDM-SL-1U-24	Shielded Recessed Angled Discrete Distribution Module Panel, SL, 1U, 24 port, Black	1U	24	Recessed Angled
760237051	CPPR-SDDM-SL-2U-48	Shielded Recessed Angled Discrete Distribution Module Panel, SL, 2U, 48 port, Black	2U	48	Recessed Angled

Copper solutions

Category 6A F/UTP



NETCONNECT CATEGORY 6A S/FTP, HIGH-DENSITY SOLUTION			
MATERIAL ID	PRODUCT NUMBER	DESCRIPTION	SOLUTION TYPE
760237066	CPP-6A-SDDM-SL-1U-48	Shielded Discrete Distribution Module Panel, Cat 6A, SL, 1U, 48 port, Black	Mix Media option
760253767	CPP-1HU-E-HD	Unshielded Panel Frame, 1U, Black	Mix Media option
760238659	CPP-FMA-KIT-4PK	Fiber Module Adapter (4 ea/pkg), Black	Mix Media option
760243427	CPP-FMAE-KIT-4PK BLK	Fiber Module Adapter + Label Extender (4 ea/pkg), Black	Mix Media option
760242925	CPP-SDDM-SLHD-KIT-4PK	Shielded Discrete Distribution Module, Cat6A, SL (4 ea/pkg), Black	Mix Media option



NETCONNECT SLX SERIES INFORMATION OUTLET WITHOUT DUST COVER		
MATERIAL ID	DESCRIPTION	COLOR*
1-2153449-3	SL-Series Modular Jack, RJ45, Cat6A Shielded, ProWhite	ProWhite
2153449-1	SL-Series Modular Jack, RJ45, Cat6A Shielded, Light Almond	Light Almond
2153449-2	SL-Series Modular Jack, RJ45, Cat6A Shielded, Black	Black
2153449-4	SL-Series Modular Jack, RJ45, Cat6A Shielded, Gray	Gray
2153449-OR	SL-Series Modular Jack, RJ45, Cat6A Shielded, Orange	Orange
2153449-6	SL-Series Modular Jack, RJ45, Cat6A Shielded, Blue	Blue
2153449-7	SL-Series Modular Jack, RJ45, Cat6A Shielded, Red	Red
2153449-YL	SL-Series Modular Jack, RJ45, Cat6A Shielded, Yellow	Yellow
2153449-9	SL-Series Modular Jack, RJ45, Cat6A Shielded, Green	Green

Copper solutions

Category 6A F/UTP



NETCONNECT SLX SERIES INFORMATION OUTLET WITH DUST COVER

MATERIAL ID	DESCRIPTION	COLOR*
2153365-1	SL-Series Modular Jack, RJ45, Cat6A Shielded, with Dust Cover, Light Almond	Light Almond
2153365-2	SL-Series Modular Jack, RJ45, Cat6A Shielded, with Dust Cover, Black	Black
2153365-4	SL-Series Modular Jack, RJ45, Cat6A Shielded, with Dust Cover, Gray	Gray
2153365-OR	SL-Series Modular Jack, RJ45, Cat6A Shielded, with Dust Cover, Orange	Orange
2153365-6	SL-Series Modular Jack, RJ45, Cat6A Shielded, with Dust Cover, Blue	Blue
2153365-7	SL-Series Modular Jack, RJ45, Cat6A Shielded, with Dust Cover, Red	Red
2153365-YL	SL-Series Modular Jack, RJ45, Cat6A Shielded, with Dust Cover, Yellow	Yellow
2153365-9	SL-Series Modular Jack, RJ45, Cat6A Shielded, with Dust Cover, Green	Green
1-2153365-3	AMP-TWIST SLX Series Modular Jack, category 6A, shielded , 4 Pair, with dust cover, ProWhite	ProWhite



ECO-FRIENDLY SHIELDED INFORMATION OUTLETS

MATERIAL ID	DESCRIPTION	COLOR
4-2153449-2	SL-Series Modular Jack, RJ45, Cat6A Shielded, Black (24 ea/pkg)	Black
4-2153449-4	SL-Series Modular Jack, RJ45, Cat6A Shielded, Gray (24 ea/pkg)	Gray
5-2153449-3	SL-Series Modular Jack, RJ45, Cat6A Shielded, ProWhite (24 ea/pkg)	ProWhite

COLOR CAPS

MATERIAL ID	DESCRIPTION	COLORS
1-2848025-1	SLX Jack Color Cap with Dust Cover, Light Almond (50 ea/pkg)	Light Almond
1-2848025-2	SLX Jack Color Cap with Dust Cover, Black (50 ea/pkg)	Black
1-2848025-3	SLX Jack Color Cap with Dust Cover, ProWhite (50 ea/pkg)	ProWhite
1-2848025-4	SLX Jack Color Cap with Dust Cover, Gray (50 ea/pkg)	Gray
1-2848025-OR	SLX Jack Color Cap with DustCover, Orange (50 ea/pkg)	Orange
1-2848025-6	SLX Jack Color Cap with Dust Cover, Blue (50 ea/pkg)	Blue
1-2848025-7	SLX Jack Color Cap with Dust Cover, Red (50 ea/pkg)	Red
1-2848025-YL	SLX Jack Color Cap with Dust Cover, Yellow (50 ea/pkg)	Yellow
1-2848025-9	SLX Jack Color Cap with Dust Cover, Green (50 ea/pkg)	Green
2-2848025-0	SLX Jack Color Cap with DustCover, Black (50 ea/pkg)	Violet

Copper solutions

Category 6A F/UTP



NETCONNECT ANGLED FACEPLATE, RECOMMENDED TO USE WITH SLX INFORMATION OUTLETS			
MATERIAL ID	DESCRIPTION	PORT	COLOR
760245679	FP KIT, BS, 1 PORT, ANGLED SHUTTERED	1	White
760245680	FP KIT, BS, 2 PORT, ANGLED SHUTTERED	2	White



NETCONNECT CATEGORY 6A S/FTP PATCH CORDS			
MATERIAL ID	DESCRIPTION	RATE	COLOR
NPC6ASZDB-WT###M	NETCONNECT Patch cord, Category 6A, 4pair, Stranded S/FTP, LSZH, White, X m	LSZH	White
NPC6ASZDB-GY###M	NETCONNECT Patch cord, Category 6A, 4pair, Stranded S/FTP, LSZH, Grey, X m	LSZH	Grey
NPC6ASZDB-BL###M	NETCONNECT Patch cord, Category 6A, 4pair, Stranded S/FTP, LSZH, Blue, X m	LSZH	Blue
NPC6ASZDB-YL###M	NETCONNECT Patch cord, Category 6A, 4pair, Stranded S/FTP, LSZH, Yellow, X m	LSZH	Yellow
NPC6ASZDB-RD###M	NETCONNECT Patch cord, Category 6A, 4pair, Stranded S/FTP, LSZH, Red, X m	LSZH	Red
NPC6ASZDB-GN###M	NETCONNECT Patch cord, Category 6A, 4pair, Stranded S/FTP, LSZH, Green, X m	LSZH	Green
NPC6ASZDB-BK###M	NETCONNECT Patch cord, Category 6A, 4pair, Stranded S/FTP, LSZH, Black, X m	LSZH	Black
NCC44FZDB-08###M	NETCONNECT Patch cord, Category 6A, 4pair, Solid F/UTP, LSZH, White, X m	LSZH	White

NOTE: Replace ### with length in met. Eg: 001 = 1m, 002 = 2m, 003 = 3m, 005= 5m.
Stranded Cord supports length up to 30 meters. Solid Cord support length up to 100 meters

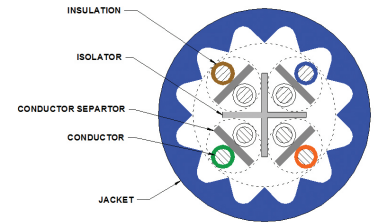


NETCONNECT CATEGORY 6A S/FTP, HIGH-DENSITY SOLUTION			
MATERIAL ID	DESCRIPTION	RATE/TYPE	COLOR
760237066	CPP-6A-SDDM-SL-1U-48: CommScope SL DDM Panel, STP, 1U, 48 port, Straight	1U, Straight	Black
760242924	CPP-1U-E-HD CommScope Patch Panel, Empty, 1U	1U, Straight	Black
760238659	CPP-FMA-KIT-4PK Module Adapter (4 pcs) for Fiber Adapters, Black		Black
760242925	CPP-SDDM-SLHD-KIT-4PK CommScope Shielded DDM for HDSL information outlets Black (4 pcs) incl ground kit and 48 information outlets SLX Category 6A information outlet		Black
1859916-X	NETCONNECT Patch cord, Category 6A, 4pair, 30AWG, S/FTP, LSZH, White, X m	LSZH	White
1859918-X	NETCONNECT Patch cord, Category 6A, 4pair, 30AWG, S/FTP, LSZH, Grey, X m	LSZH	Grey
1859919-X	NETCONNECT Patch cord, Category 6A, 4pair, 30AWG, S/FTP, LSZH, Red, X m	LSZH	Red

NOTE: Replace X with length in met. Eg: 1 = 1m, 2 = 2m, 3 = 3m, 5= 5m

Copper solutions

Category 6A U/UTP



CATEGORY 6A U/UTP CABLES

MATERIAL ID	DESCRIPTION	RATE	AW	COLOR	LENGTH	PACKAGING
884057804/10	CS41Z1 BLU C6A 4/23 U/UTP RL 305M	LSZH	23 AWG	Blue	305 m	Reel
884060904/10	CS41Z1 GRY C6A 4/23 U/UTP RL 305M	LSZH	23 AWG	Gray	305 m	Reel
884050804/10	CS41Z1 WHT C6A 4/23 U/UTP RL 305M	LSZH	23 AWG	White	305 m	Reel
884066604/10	CS41Z3 BLU C6A 4/23 U/UTP RL 305M	LSZH	23 AWG	Blue	305 m	Reel
884056904/10	CS41Z3 GRY C6A 4/23 U/UTP RL 305M	LSZH	23 AWG	Gray	305 m	Reel
884063304/10	CS41Z3 WHT C6A 4/23 U/UTP RL 305M	LSZH	23 AWG	White	305 m	Reel
884064004/10	CS41CM BLU C6A 4/23 U/UTP RL 305M	CM	23 AWG	Blue	305 m	Reel
884062904/10	CS41CM GRY C6A 4/23 U/UTP RL 305M	CM	23 AWG	Gray	305 m	Reel
884056804/10	CS41CM WHT C6A 4/23 U/UTP RL 305M	CM	23 AWG	White	305 m	Reel
884057904/10	CS41R BLU C6A 4/23 U/UTP RL 305M	CMR	23 AWG	Blue	305 m	Reel
884057204/10	CS41R GRY C6A 4/23 U/UTP RL 305M	CMR	23 AWG	Gray	305 m	Reel
884067804/10	CS41R WHT C6A 4/23 U/UTP RL 305M	CMR	23 AWG	White	305 m	Reel
460158784	Cat 6A F/UTP Cable, 23AWG. OD 7.9mm.	OUTDOOR	23 AWG	Black	305 m	Reel
884048304/10	CS41CM BLU C6A 4/24 U/UTP RL 305M	CM	24 AWG	Blue	305 m	Reel
884048904/10	CS41CM GRY C6A 4/24 U/UTP RL 305M	CM	24 AWG	Gray	305 m	Reel
884037504/10	CS41CM WHT C6A 4/24 U/UTP RL 305M	CM	24 AWG	White	305 m	Reel
884049104/10	CS41R BLU C6A 4/24 U/UTP RL 305M	CMR	24 AWG	Blue	305 m	Reel
884039004/10	CS41R GRY C6A 4/24 U/UTP RL 305M	CMR	24 AWG	Gray	305 m	Reel
884015004/10	CS41R WHT C6A 4/24 U/UTP RL 305M	CMR	24 AWG	White	305 m	Reel
884041004/10	CS41Z1 BLU C6A 4/24 U/UTP RL 305M	LSZH	24 AWG	Blue	305 m	Reel
884045804/10	CS41Z1 GRY C6A 4/24 U/UTP RL 305M	LSZH	24 AWG	Gray	305 m	Reel
884049604/10	CS41Z1 WHT C6A 4/24 U/UTP RL 305M	LSZH	24 AWG	White	305 m	Reel
884047004/10	CS41Z3 BLU C6A 4/24 U/UTP RL 305M	LSZH	24 AWG	Blue	305 m	Reel
884018004/10	CS41Z3 GRY C6A 4/24 U/UTP RL 305M	LSZH	24 AWG	Gray	305 m	Reel
884042604/10	CS41Z3 WHT C6A 4/24 U/UTP RL 305M	LSZH	24 AWG	White	305 m	Reel



COMMSCOPE DYNAMIC ANGLED DISTRIBUTION MODULE PANELS, CATEGORY 6A UTP

MATERIAL ID	PRODUCT NUMBER	DESCRIPTION	SPACE	PORTS	TYPE
760244168	CPPD-6A-DM-1U-24	Unshielded Dynamic Angled Distribution Module Panel, Cat 6A, 1U, 24 port, Black	1U	24	Dynamic Angle

Copper solutions

Category 6A U/UTP



COMMSCOPE DISTRIBUTION MODULE (DM) PATCH PANELS, CATEGORY 6A UTP

MATERIAL ID	PRODUCT NUMBER	DESCRIPTION	SPACE	PORTS	TYPE
760237032	NPP-6A-DM-1U-24	Unshielded Distribution Module Panel, Cat 6A, 1U, 24 port, Black	1U	24	Straight
760237033	NPP-6A-DM-2U-48	Unshielded Distribution Module Panel, Cat 6A, 2U, 48 port, Black	2U	48	Straight
760237036	NPPR-6A-DM-1U-24	Unshielded Recessed Angled Distribution Module Panel, Cat 6A, 1U, 24 port, Black	1U	24	Recessed Angled
760237037	NPPR-6A-DM-2U-48	Unshielded Recessed Angled Distribution Module Panel, Cat 6A, 2U, 48 port, Black	2U	48	Recessed Angled



NETCONNECT SL SERIES INFORMATION OUTLET, WITHOUT DUST COVER

MATERIAL ID	DESCRIPTION	COLOR
760241184	SL-Series Modular Jack, RJ45, Cat6A Unshielded, Light Almond	Light Almond
760241185	SL-Series Modular Jack, RJ45, Cat6A Unshielded, Black	Black
760241186	SL-Series Modular Jack, RJ45, Cat6A Unshielded, Gray	Gray
760257186	SL-Series Modular Jack, RJ45, Cat6A Unshielded, Orange	Orange
760241188	SL-Series Modular Jack, RJ45, Cat6A Unshielded, Blue	Blue
760241189	SL-Series Modular Jack, RJ45, Cat6A Unshielded, Red	Red
760257189	SL-Series Modular Jack, RJ45, Cat6A Unshielded, Yellow	Yellow
760241191	SL-Series Modular Jack, RJ45, Cat6A Unshielded, Green	Green
760241192	SL-Series Modular Jack, RJ45, Cat6A Unshielded, Violet	Violet
760241193	SL-Series Modular Jack, RJ45, Cat6A Unshielded, Ivory	Ivory
760241194	SL-Series Modular Jack, RJ45, Cat6A Unshielded, ProWhite	ProWhite



COMMSCOPE CEILING CONNECTOR ASSEMBLY SOLUTION

MATERIAL ID	DESCRIPTION	COLOR
760234921	Unshielded Ceiling Connector Assembly (CCA) without cordage, White	White
760235590	CommScope Category 6A U/UTP Cord, LSZH , RJ45 to Ceiling connector, 1.5 ft, white	White
760235591	CommScope Category 6A U/UTP Cord, Plenum , RJ45 to Ceiling connector, 1.5 ft, black	Black
760235585	CommScope Category 6 U/UTP Cord, LSZH , RJ45 to Ceiling connector, 1.5 ft, black	Black
760235587	CommScope Category 6 U/UTP Cord, Plenum , RJ45 to Ceiling connector, 1.5 ft, black	Black
760235589	CommScope Category 6A U/UTP Cord, LSZH , RJ45 to Ceiling connector, 1.5 ft, black	Black

Copper solutions

Category 6A U/UTP



NETCONNECT CATEGORY 6A U/UTP PATCH CORDS

MATERIAL ID	DESCRIPTION	RATE	COLOR
NPC6AUZDB-WT###M	NETCONNECT Patch cord, Category 6A, 4pair, Solid U/UTP, LSZH, White, X m	LSZH	White
NPC6AUZDB-GY###M	NETCONNECT Patch cord, Category 6A, 4pair, Solid U/UTP, LSZH, Gray, X m	LSZH	Gray
NPC6AUZDB-OR###M	NETCONNECT Patch cord, Category 6A, 4pair, Solid U/UTP, LSZH, Orange, X m	LSZH	Orange
NPC6AUZDB-BK###M	NETCONNECT Patch cord, Category 6A, 4pair, Solid U/UTP, LSZH, Black, X m	LSZH	Black
NPC6AUZDB-BL###M	NETCONNECT Patch cord, Category 6A, 4pair, Solid U/UTP, LSZH, Blue, X m	LSZH	Blue
NPC6AUZDB-GN###M	NETCONNECT Patch cord, Category 6A, 4pair, Solid U/UTP, LSZH, Green, X m	LSZH	Green
NPC6AUZDB-YL###M	NETCONNECT Patch cord, Category 6A, 4pair, Solid U/UTP, LSZH, Yellow, X m	LSZH	Yellow
NPC6AUZDB-RD###M	NETCONNECT Patch cord, Category 6A, 4pair, Solid U/UTP, LSZH, Red, X m	LSZH	Red
NCC44UZDB-08M###	NETCONNECT Patch cord, Category 6A, 4pair, Solid U/UTP, LSZH, White, X m	LSZH	White

NOTE: Replace ### with length in met. Eg: 001 = 1m, 002 = 2m, 003 = 3m, 005= 5m.
Stranded Cord supports length up to 30 meters. Solid Cord support length up to 100 meters



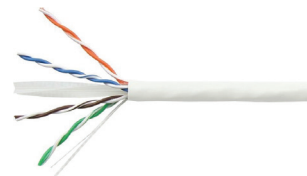
NETCONNECT CATEGORY 6A U/UTP, HIGH-DENSITY SOLUTION

MATERIAL ID	DESCRIPTION	RATE	COLOR
CO199K2-0ZM###	CommScope Patch cord, Category 6A, 4pair, 28AWG, Stranded U/UTP, CM, Blue, X m	CM-LS	Blue
CO199K2-08M###	CommScope Patch cord, Category 6A, 4pair, 28AWG, Stranded U/UTP, CM, White, X m	CM-LS	Yellow
CO199K2-07M###	CommScope Patch cord, Category 6A, 4pair, 28AWG, Stranded U/UTP, CM, Red, X m	CM-LS	Red
CO199K2-03M###	CommScope Patch cord, Category 6A, 4pair, 28AWG, Stranded U/UTP, CM, Dark Gray, X m	CM-LS	Dark Gray
CO199K2-04M###	CommScope Patch cord, Category 6A, 4pair, 28AWG, Stranded U/UTP, CM, Spring Green, X m	CM-LS	Spring Green
CO199K2-01M###	CommScope Patch cord, Category 6A, 4pair, 28AWG, Stranded U/UTP, CM, Black, X m	CM-LS	Black
CO199K2-06M###	CommScope Patch cord, Category 6A, 4pair, 28AWG, Stranded U/UTP, CM, Orange, X m	CM-LS	Orange
CO199K2-02M###	CommScope Patch cord, Category 6A, 4pair, 28AWG, Stranded U/UTP, CM, Light Blue, X m	CM-LS	Light Blue
CO199K2-0LM###	CommScope Patch cord, Category 6A, 4pair, 28AWG, Stranded U/UTP, CM, Violet, X m	CM-LS	Violet
CO199K2-09M###	CommScope Patch cord, Category 6A, 4pair, 28AWG, Stranded U/UTP, CM, Yellow, X m	CM-LS	Yellow

NOTE: Replace ### with length in met. Eg: 001 = 1m, 002 = 2m, 003 = 3m, 005= 5m

Copper solutions

Category 6 U/UTP



NETCONNECT CATEGORY 6 U/UTP CABLES				
MATERIAL ID	DESCRIPTION	JACKET	CONDUCTOR GAUGE	REGION
1427071-6	CS30CM WHT C6 4/24 U/UTP RIB 305M	CM	24 AWG	APAC
1427070-2	CS30Z1 WHT C6 4/24 U/UTP RIB 305M	LSZH	24 AWG	APAC
1967075-2	NETCONNECT Category 6 Cable, 4 pair, 24 AWG, U/UTP, PVC, 305m, Reel in box, Gray	PVC	24 AWG	India
884016994/10	CS31CM BLU C6 4/23 U/UTP RIB 305M	CM	23 AWG	APAC
884031194/10	CS31R GRY C6 4/23 U/UTP RIB 305M	CMR	23 AWG	APAC
884023394/10	CS31R BLU C6 4/23 U/UTP RIB 305M	CMR	23 AWG	APAC
884036494/10	CS31Z1 WHT C6 4/23 U/UTP RIB 305M	LSZH	23 AWG	APAC
884036214/10	CS37Z3 ORG C6 4/23 U/UTP CPK 305M	LSZH	23 AWG	India
884036314/10	CS37Z3 GRY C6 4/23 U/UTP CPK 305M	LSZH	23 AWG	India
884036614/10	CS37Z3 GRN C6 4/23 U/UTP CPK 305M	LSZH	23 AWG	India
884036914/10	CS37Z3 WHT C6 4/23 U/UTP CPK 305M	LSZH	23 AWG	India
884037014/10	CS37Z3 YEL C6 4/23 U/UTP CPK 305M	LSZH	23 AWG	India
884037114/10	CS37Z3 RED C6 4/23 U/UTP CPK 305M	LSZH	23 AWG	India
884037414/10	CS37Z3 BLU C6 4/23 U/UTP CPK 305M	LSZH	23 AWG	India



COMMSCOPE DYNAMIC ANGLED DISTRIBUTION MODULE PANELS, CATEGORY 6 UTP				
MATERIAL ID	PRODUCT NUMBER	DESCRIPTION	SPACE	PORT
760244166	CPPD-6-DM-1U-24	Unshielded Dynamic Angled Distribution Module Panel, Cat 6, 1U, 24 port, Black	1U	24



COMMSCOPE SL DISCRETE DISTRIBUTION MODULE (DDM) PATCH PANELS, UNLOADED				
MATERIAL ID	PRODUCT NUMBER	DESCRIPTION	SPACE	PORT
760237040	CPP-UDDM-SL-1U-24	Unshielded Discrete Distribution Module Panel, SL, 1U, 24 port, Black	1U	24
760237041	CPP-UDDM-SL-2U-48	Unshielded Discrete Distribution Module Panel, SL, 2U, 48 port, Black	2U	48
760237042	CPPA-UDDM-SL-1U-24	Unshielded Angled Discrete Distribution Module Panel, SL, 1U, 24 port, Black	1U	24
760237043	CPPA-UDDM-SL-2U-48	Unshielded Angled Discrete Distribution Module Panel, SL, 2U, 48 port, Black	2U	48
760237044	CPPR-UDDM-SL-1U-24	Unshielded Recessed Angled Discrete Distribution Module Panel, SL, 1U, 24 port, Black	1U	24
760237045	CPPR-UDDM-SL-2U-48	Unshielded Recessed Angled Discrete Distribution Module Panel, SL, 2U, 48 port, Black	2U	48

COMMSCOPE SL DISCRETE DISTRIBUTION MODULE (DDM) PATCH PANEL, LOADED				
MATERIAL ID	PRODUCT NUMBER	DESCRIPTION	SPACE	PORT
760242562	CPP-6-UDDM-SL-1U-24	Unshielded Discrete Distribution Module Panel, Cat 6, SL, 1U, 24 port, Black	1U	24

Copper solutions

Category 6 U/UTP



NETCONNECT SL SERIES INFORMATION OUTLET, WITHOUT DUST COVER

MATERIAL ID	DESCRIPTION	COLOR
1375055-1	SL-Series Modular Jack, RJ45, Cat6 Unshielded, Light Almond	Light Almond
1375055-2	SL-Series Modular Jack, RJ45, Cat6 Unshielded, Black	Black
1375055-4	SL-Series Modular Jack, RJ45, Cat6 Unshielded, Gray	Gray
1375055-OR	SL-Series Modular Jack, RJ45, Cat6 Unshielded, Orange	Orange
1375055-6	SL-Series Modular Jack, RJ45, Cat6 Unshielded, Blue	Blue
1375055-7	SL-Series Modular Jack, RJ45, Cat6 Unshielded, Red	Red
1375055-YL	SL-Series Modular Jack, RJ45, Cat6 Unshielded, Yellow	Yellow
1375055-9	SL-Series Modular Jack, RJ45, Cat6 Unshielded, Green	Green
1-1375055-3	SL-Series Modular Jack, RJ45, Cat6 Unshielded, ProWhite	ProWhite
9-1375055-2	SL-Series Modular Jack, RJ45, Cat6 Unshielded, Black (24 ea/pkg)	Black



NETCONNECT SL SERIES INFORMATION OUTLET, WITH DUST COVER

MATERIAL ID	DESCRIPTION	COLOR
1375187-1	SL-Series Modular Jack, RJ45, Cat6 Unshielded, with Dust Cover, Light Almond	Light Almond
1375187-2	SL-Series Modular Jack, RJ45, Cat6 Unshielded, with Dust Cover, Black	Black
1375187-4	SL-Series Modular Jack, RJ45, Cat6 Unshielded, with Dust Cover, Gray	Gray
1375187-OR	SL-Series Modular Jack, RJ45, Cat6 Unshielded, with Dust Cover, Orange	Orange
1375187-6	SL-Series Modular Jack, RJ45, Cat6 Unshielded, with Dust Cover, Blue	Blue
1375187-7	SL-Series Modular Jack, RJ45, Cat6 Unshielded, with Dust Cover, Red	Red
1375187-YL	SL-Series Modular Jack, RJ45, Cat6 Unshielded, with Dust Cover, Yellow	Yellow
1375187-9	SL-Series Modular Jack, RJ45, Cat6 Unshielded, with Dust Cover, Green	Green
1-1375187-0	SL-Series Modular Jack, RJ45, Cat6 Unshielded, with Dust Cover, Violet	Violet
1-1375187-3	SL-Series Modular Jack, RJ45, Cat6 Unshielded, with Dust Cover, ProWhite	ProWhite

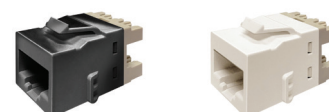
Copper solutions

Category 6 U/UTP



NETCONNECT SL SERIES INFORMATION OUTLET, PACKAGED WITH A CLIPSAL BEZEL, FIT TO CLIPSAL/SCHNEIDER FACEPLATES

MATERIAL ID	DESCRIPTION	COLOR
760238473	SL-Series FMK Modular Jack, RJ45, Cat6, Unshielded, with Dust Cover, ProWhite	ProWhite
760238472	SL-Series FMK Modular Jack, RJ45, Cat6, Unshielded, ProWhite	ProWhite
760238471	SL-Series FMK Modular Jack, RJ45, Cat6, Unshielded, Black	Black



NETCONNECT KJ SERIES INFORMATION OUTLET, WITHOUT DUST COVER, TO USE WITH KEYSTONE FACEPLATES OF OTHER SUPPLIERS

MATERIAL ID	DESCRIPTION	COLOR
2291216-1	KJ-Series Modular Jack, RJ45, Cat6 Unshielded, Light Almond	Light Almond
2291216-2	KJ-Series Modular Jack, RJ45, Cat6 Unshielded, Black	Black
1-2291216-3	KJ-Series Modular Jack, RJ45, Cat6 Unshielded, ProWhite	ProWhite



NETCONNECT CATEGORY 6 U/UTP, HIGH-DENSITY SOLUTION

MATERIAL ID	PRODUCT NUMBER	DESCRIPTION	RATE	COLOR
760237060	NPP-UDDM-SL-1U-48	NETCONNECT DDM Patch Panel, Category 6, UTP, 1U, 48 port	1U, Straight	Black
760237061	NPPA-UDDM-SL-1U-48	NETCONNECT Angled DDM Patch Panel, Category 6, UTP, 1U, 48 port	1U, Angled	Black
CO166S2-01M###		CommScope Patch cord, Category 6, 4pair, 28AWG, Stranded U/UTP, CM-LS, Black, X m	CM-LS	Black
CO166S2-02M###		CommScope Patch cord, Category 6, 4pair, 28AWG, Stranded U/UTP, CM-LS, Light Blue, X m	CM-LS	Light Blue
CO166S2-03M###		CommScope Patch cord, Category 6, 4pair, 28AWG, Stranded U/UTP, CM-LS, Gray, X m	CM-LS	Gray
CO166S2-04M###		CommScope Patch cord, Category 6, 4pair, 28AWG, Stranded U/UTP, CM-LS, Spring Green, X m	CM-LS	Spring Green
CO166S2-07M###		CommScope Patch cord, Category 6, 4pair, 28AWG, Stranded U/UTP, CM-LS, Red, X m	CM-LS	Red
CO166S2-08M###		CommScope Patch cord, Category 6, 4pair, 28AWG, Stranded U/UTP, CM-LS, White, X m	CM-LS	White
CO166S2-09M###		CommScope Patch cord, Category 6, 4pair, 28AWG, Stranded U/UTP, CM-LS, Yellow, X m	CM-LS	Yellow
CO166S2-0ZM###		CommScope Patch cord, Category 6, 4pair, 28AWG, Stranded U/UTP, CM-LS, Blue, X m	CM-LS	Blue

NOTE: Replace X with length in met. Eg: 1 = 1m, 2 = 2m, 3 = 3m, 5= 5m

Copper solutions

Category 6 U/UTP



NETCONNECT CATEGORY 6 U/UTP PATCH CORDS			
MATERIAL ID	DESCRIPTION	RATE	COLOR
NPC06UVDB-BL###F	NETCONNECT Patch cord, Category 6, 4pair, Stranded U/UTP, CM, Blue, X ft	CM	Blue
NPC06UVDB-YL###F	NETCONNECT Patch cord, Category 6, 4pair, Stranded U/UTP, CM, Yellow, X ft	CM	Yellow
NPC06UVDB-RD###F	NETCONNECT Patch cord, Category 6, 4pair, Stranded U/UTP, CM, Red, X ft	CM	Red
NPC06UVDB-OR###F	NETCONNECT Patch cord, Category 6, 4pair, Stranded U/UTP, CM, Orange, X ft	CM	Orange
NPC06UVDB-GY###F	NETCONNECT Patch cord, Category 6, 4pair, Stranded U/UTP, CM, Gray, X ft	CM	Gray
NPC06UVDB-WT###F	NETCONNECT Patch cord, Category 6, 4pair, Stranded U/UTP, CM, White, X ft	CM	White
NPC06UVDB-GN###F	NETCONNECT Patch cord, Category 6, 4pair, Stranded U/UTP, CM, Green, X ft	CM	Green
NPC06UVDB-BK###F	NETCONNECT Patch cord, Category 6, 4pair, Stranded U/UTP, CM, Black, X ft	CM	Black
NCC31URDB-08###F	NETCONNECT Patch cord, Category 6, 4pair, Solid U/UTP, CM, White, X ft	CMR	White
NCC31URDB-0Z###F	NETCONNECT Patch cord, Category 6, 4pair, Solid U/UTP, CM, Blue, X ft	CMR	Blue
NCC31URDB-0C###F	NETCONNECT Patch cord, Category 6, 4pair, Solid U/UTP, CM, Gray, X ft	CMR	Gray

NOTE: Replace ### with length in feet. Eg: 004 = 4F, 007 = 7F, 010 = 10F.
Stranded Cord supports length up to 30 meters. Solid Cord support length up to 100 meters.

MATERIAL ID	DESCRIPTION	RATE	COLOR
NPC06UZDB-WT###M	NETCONNECT Patch cord, Category 6, 4pair, Stranded U/UTP, LSZH, White, X m	LSZH	White
NPC06UZDB-GY###M	NETCONNECT Patch cord, Category 6, 4pair, Stranded U/UTP, LSZH, Gray, X m	LSZH	Gray
NPC06UZDB-OR###M	NETCONNECT Patch cord, Category 6, 4pair, Stranded U/UTP, LSZH, Orange, X m	LSZH	Orange
NPC06UZDB-BL###M	NETCONNECT Patch cord, Category 6, 4pair, Stranded U/UTP, LSZH, Blue, X m	LSZH	Blue
NPC06UZDB-YL###M	NETCONNECT Patch cord, Category 6, 4pair, Stranded U/UTP, LSZH, Yellow, X m	LSZH	Yellow
NPC06UZDB-RD###M	NETCONNECT Patch cord, Category 6, 4pair, Stranded U/UTP, LSZH, Red, X m	LSZH	Red
NPC06UZDB-GN###M	NETCONNECT Patch cord, Category 6, 4pair, Stranded U/UTP, LSZH, Green X m	LSZH	Green
NCC37UZDB-08M###	NETCONNECT Patch cord, Category 6, 4pair, Solid U/UTP, LSZH, White, X m	LSZH	White
NCC37UZDB-06M###	NETCONNECT Patch cord, Category 6, 4pair, Solid U/UTP, LSZH, Orange, X m	LSZH	Orange
NCC37UZDB-07M###	NETCONNECT Patch cord, Category 6, 4pair, Solid U/UTP, LSZH, Red, X m	LSZH	Red
NCC37UZDB-09M###	NETCONNECT Patch cord, Category 6, 4pair, Solid U/UTP, LSZH, Yellow, X m	LSZH	Yellow
NCC37UZDB-0MM###	NETCONNECT Patch cord, Category 6, 4pair, Solid U/UTP, LSZH, Green, X m	LSZH	Green
NCC37UZDB-0CM###	NETCONNECT Patch cord, Category 6, 4pair, Solid U/UTP, LSZH, Gray, X m	LSZH	Gray
NCC37UZDB-0LM###	NETCONNECT Patch cord, Category 6, 4pair, Solid U/UTP, LSZH, Violet, X m	LSZH	Violet
NCC37UZDB-0ZM###	NETCONNECT Patch cord, Category 6, 4pair, Solid U/UTP, LSZH, Blue, X m	LSZH	Blue

NOTE: Replace ### with length in met. Eg: 001 = 1m, 002 = 2m, 003 = 3m, 005= 5m.
Stranded Cord supports length up to 30 meters. Solid Cord support length up to 100 meters.

Copper solutions

Category 6 F/UTP



NETCONNECT CATEGORY 6 F/UTP CABLES

MATERIAL ID	DESCRIPTION	RATE	COLOR
874043904/10	NETCONNECT CS34P, Category 6 Cable, 4 pair, 23 AWG, F/UTP, Plenum, 1000FT, Reel, Blue	Plenum	Blue
884016408/10	NETCONNECT CS34CM, Category 6 Cable, 4 pair, 23 AWG, F/UTP, CM, 305M, Reel, white	CM	White
884033508/10	NETCONNECT CS34CM, Category 6 Cable, 4 pair, 23 AWG, F/UTP, CM, 305M, Reel, Blue	CM	Blue
884049808/10	NETCONNECT CS34Z1, Category 6 Cable, 4 pair, 23 AWG, F/UTP, LSZH, 305M, Reel, White	LSZH	White
884049858/16	NETCONNECT CS34Z1, Category 6 Cable, 4 pair, 23 AWG, F/UTP, LSZH, 500M, Reel, White	LSZH	White
884035408/10	NETCONNECT CS34Z1, Category 6 Cable, 4 pair, 23 AWG, F/UTP, LSZH, 305M, Reel, Gray	LSZH	Gray
884030004/10	NETCONNECT CS34R, Category 6 Cable, 4 pair, 23 AWG, F/UTP, LSZH, 1000FT, Reel, White	CMR	White



COMMSCOPE SL DISCRETE DISTRIBUTION MODULE (DDM) PATCH PANELS, UNLOADED

MATERIAL ID	PRODUCT NUMBER	DESCRIPTION	SPACE	PORT	TYPE
760237046	CPP-SDDM-SL-1U-24	Shielded Discrete Distribution Module Panel, SL, 1U, 24 port, Black	1U	24	Straight
760237047	CPP-SDDM-SL-2U-48	Shielded Discrete Distribution Module Panel, SL, 2U, 48 port, Black	2U	48	Straight
760237048	CPPA-SDDM-SL-1U-24	Shielded Angled Discrete Distribution Module Panel, SL, 1U, 24 port, Black	1U	24	Angled
760237049	CPPA-SDDM-SL-2U-48	Shielded Angled Discrete Distribution Module Panel, SL, 2U, 48 port, Black	2U	48	Angled
760237050	CPPR-SDDM-SL-1U-24	Shielded Recessed Angled Discrete Distribution Module Panel, SL, 1U, 24 port, Black	1U	24	Recessed Angled
760237051	CPPR-SDDM-SL-2U-48	Shielded Recessed Angled Discrete Distribution Module Panel, SL, 2U, 48 port, Black	2U	48	Recessed Angled

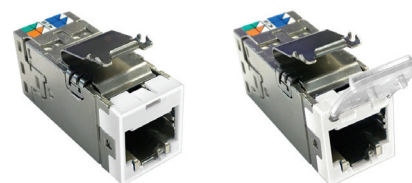


NETCONNECT CATEGORY 6 FTP, HIGH-DENSITY SOLUTION

MATERIAL ID	PRODUCT NUMBER	DESCRIPTION	SOLUTION
760253767	CPP-1HU-E-HD	Unshielded Panel Frame, 1U, Black	Mix Media Option
760238659	CPP-FMA-KIT-4PK	Fiber Module Adapter (4 ea/pkg), Black	Mix Media Option
760243427	CPP-FMAE-KIT-4PK BLK	Fiber Module Adapter + Label Extender (4 ea/pkg), Black	Mix Media Option
760250890	CPP-6-SDDM-SLHD-KIT-4PK	Shielded Discrete Distribution Module, Cat6, SL (4 ea/pkg)	Mix Media Option

Copper solutions

Category 6 F/UTP



NETCONNECT SLX SERIES INFORMATION OUTLET WITH DUST COVER		
MATERIAL ID	DESCRIPTION	COLOR
2153364-1	SL-Series Modular Jack, RJ45, Cat6 Shielded, with Dust Cover, Light Almond	Light Almond
2153364-2	SL-Series Modular Jack, RJ45, Cat6 Shielded, with Dust Cover, Black	Black
2153364-4	SL-Series Modular Jack, RJ45, Cat6 Shielded, with Dust Cover, Gray	Gray
2153364-OR	SL-Series Modular Jack, RJ45, Cat6 Shielded, with Dust Cover, Orange	Orange
2153364-6	SL-Series Modular Jack, RJ45, Cat6 Shielded, with Dust Cover, Blue	Blue
2153364-7	SL-Series Modular Jack, RJ45, Cat6 Shielded, with Dust Cover, Red	Red
2153364-YL	SL-Series Modular Jack, RJ45, Cat6 Shielded, with Dust Cover, Yellow	Yellow
2153364-9	SL-Series Modular Jack, RJ45, Cat6 Shielded, with Dust Cover, Green	Green
1-2153364-3	SL-Series Modular Jack, RJ45, Cat6 Shielded, with Dust Cover, ProWhite	ProWhite

NETCONNECT SLX SERIES INFORMATION OUTLET WITHOUT DUST COVER		
MATERIAL ID	DESCRIPTION	COLOR
2153448-1	SL-Series Modular Jack, RJ45, Cat6 Shielded, Light Almond	Light Almond
2153448-2	SL-Series Modular Jack, RJ45, Cat6 Shielded, Black	Black
2153448-4	SL-Series Modular Jack, RJ45, Cat6 Shielded, Gray	Gray
2153448-OR	SL-Series Modular Jack, RJ45, Cat6 Shielded, Orange	Orange
2153448-6	SL-Series Modular Jack, RJ45, Cat6 Shielded, Blue	Blue
2153448-7	SL-Series Modular Jack, RJ45, Cat6 Shielded, Red	Red
2153448-YL	SL-Series Modular Jack, RJ45, Cat6 Shielded, Yellow	Yellow
2153448-9	SL-Series Modular Jack, RJ45, Cat6 Shielded, Green	Green
1-2153448-3	SL-Series Modular Jack, RJ45, Cat6 Shielded, ProWhite	ProWhite



NETCONNECT CATEGORY 6 F/UTP PATCH CORDS			
MATERIAL ID	DESCRIPTION	RATE	COLOR
NPC06SZDB-WT###M	NETCONNECT Patch cord, Category 6, 4pair, Stranded S/FTP, LSZH, White, X m	LSZH	White
NPC06SZDB-GY###M	NETCONNECT Patch cord, Category 6, 4pair, Stranded S/FTP, LSZH, Grey, X m	LSZH	Grey
NPC06SZDB-BL###M	NETCONNECT Patch cord, Category 6, 4pair, Stranded S/FTP, LSZH, Blue, X m	LSZH	Blue
NPC06SZDB-YL###M	NETCONNECT Patch cord, Category 6, 4pair, Stranded S/FTP, LSZH, Yellow, X m	LSZH	Yellow
NPC06SZDB-RD###M	NETCONNECT Patch cord, Category 6, 4pair, Stranded S/FTP, LSZH, Red, X m	LSZH	Red
NPC06SZDB-GN###M	NETCONNECT Patch cord, Category 6, 4pair, Stranded S/FTP, LSZH, Green, X m	LSZH	Green
NPC06SZDB-OR###M	NETCONNECT Patch cord, Category 6, 4pair, Stranded S/FTP, LSZH, Orange, X m	LSZH	Orange
NPC06SZDB-BK###M	NETCONNECT Patch cord, Category 6, 4pair, Stranded S/FTP, LSZH, Black, X m	LSZH	Black

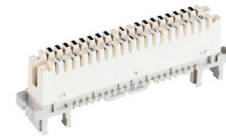
NOTE: Replace ### with length in met. Eg: 001 = 1m, 002 = 2m, 003 = 3m, 005= 5m

Copper solutions

Telephone – ADSL Systems

LSA-PLUS® DISCONNECT MODULE

MATERIAL ID	PRODUCT NUMBER	DESCRIPTION	PAIR
60891121-02	6089 1 121-02	CommScope LSA-PLUS® Series 2 Disconnection Module, 10-pair, Contact Special Brass, Silver plated, PROFIL mounting	10
64685061-00	6468 5 061-00	Highband® Disconnection Module, category 5e, PROFIL®, 10-pair	10
64685060-08	6468 5 060-08	Highband® Ultim8 Disconnection Module, 8-pair, with jumper rings, category 6	8



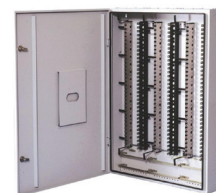
LSA-PLUS® DISTRIBUTION RACK & BACKMOUNT FRAME (UNLOADED)

MATERIAL ID	PRODUCT NUMBER	DESCRIPTION	PAIRS
Distribution Rack			
64201013-00	6420 1 013-00	LSA-PLUS® Distribution Rack, for holding standard and PROFIL modules series 2, black	1380
Backmount Frame for 19' Rack			
64271017-01	6427 1 017-01	LSA-Plus® Backmount Frame, 19 in, 15-way, 3 RU, recessed	150
64271007-01	6427 1 007-01	LSA-Plus® Backmount Frame, 19 in, 18-way, 4 RU, recessed	180
64271007-01	6427 1 007-01	LSA-Plus® Backmount Frame, 19 in, 18-way, 4 RU, recessed	180



LSA-PLUS® WALL BOXES (UNLOADED)

MATERIAL ID	PRODUCT NUMBER	DESCRIPTION	PAIRS
64282421-00	6428 2 421-00	LSA-PLUS® Connection Box, 500 Series, holds up to 1 x 10 Series 2 LSA-PLUS modules	100
64282418-00	6428 2 418-00	LSA-PLUS® Connection Box, 500 Series, holds up to 2 x 10 Series 2 LSA-PLUS modules	200
64282419-00	6428 2 419-00	LSA-PLUS® Connection Box, 500 Series, holds up to 2 x 20 Series 2 LSA-PLUS modules	400
64282424-00	6428 2 424-00	LSA-PLUS® Connection Box, 520 Series, holds up to 2 x 34 Series 2 LSA-PLUS modules	680
64282425-00	6428 2 425-00	LSA-PLUS® Connection Box, 530 Series, holds up to 3 x 34 Series 2 LSA-PLUS modules	1020



Copper solutions

Telephone – ADSL Systems

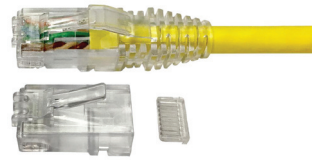
COMPROTECT OVERVOLTAGE PROTECTION			
MATERIAL ID	PRODUCT NUMBER	DESCRIPTION	PAIRS
EG0529-001	8800 1 010-20	1/2 ComProtect CGB180A3 - Voice - Single pair protection plug 5-point w/ PTC - use w/ LSA series 2 (Box of 10 pcs w/ earth bar)	1
CZ7403-000	C6089 2 023-08	LSA-PLUS® Overvoltage Arrestor Magazine, 10-pair, loaded, 5kA, 230V	10

LSA-PLUS® INSERTION TOOL WITH SENSOR		
MATERIAL ID	PRODUCT NUMBER	DESCRIPTION
64172055-01	6417 2 055-01	LSA-PLUS® Insertion Tool with Sensor



Copper solutions

Modular RJ45 Plug & Termination Tools



NETCONNECT CATEGORY 6A RJ45 MODULAR PLUG & TOOL

MATERIAL ID	PRODUCT NUMBER	DESCRIPTION	CATEGORY	TYPE
Connector (Used with Cat6A UTP CS44 only)				
6-2843007-1	MP-6AU-Plug-A-1	Modular Plug, Category 6A/6, Unshielded, Cond Insulation OD - 0.99mm, 100/bag	Cat.6	Unshielded
2843018-3	MP-6AU-Boot-71-1:	Integrated Boot and Pair Manager for MP-6AU, 71 mm, transparent	-	Boot



TOOL KITS

MATERIAL ID	DESCRIPTION	TYPE
2-231652-0	NETCONNECT Modular Plug Hand Tool without Dies	Tool
1-853400-5	NETCONNECT Modular Plug Die Only, 8-Position, MP-6AU Plugs, Pink Dot	Die Set



NETCONNECT CATEGORY 6 RJ45 MODULAR PLUG & TOOL

MATERIAL ID	DESCRIPTION	CATEGORY	TYPE
6-2111979-3	NETCONNECT Modular Plug Kit, Category 6, shielded, 8-position, 5.1 – 6.0 mm max cable OD, 100/bag	Cat.6	Shielded
6-2111989-3	NETCONNECT Modular Plug Kit, Category 6, shielded, 8-position, 5.7 – 7.0 mm max cable OD, 100/bag	Cat.6	Shielded



TOOL KITS

MATERIAL ID	DESCRIPTION	TYPE
1-790163-1	Modular Plug Hand Tool with Die for Shielded Plugs, C Size Shield (5.7 – 7.0mm)	Tool

Copper solutions

Modular RJ45 Plug & Termination Tools

TOOL KITS			
MATERIAL ID	DESCRIPTION	CATEGORY	TYPE
2-231652-1	NETCONNECT Modular Plug Hand Tool with 8-Position Die, Category 5, Black Dot	Cat.5	Tool
2-231652-0	NETCONNECT Modular Plug Hand Tool without Dies	-	Tool
1-853400-0	NETCONNECT Modular Plug Die Only, 8-Position, Category 5e, White Dot	Cat.5e	Die Set
853400-1	NETCONNECT Modular Plug Die Only, 8-Position, Category 5, Black Dot	Cat.5	Die Set



NETCONNECT MODULAR BOOT			
MATERIAL ID	DESCRIPTION	CATEGORY	COLOR
Transparent Boot, compatible with color clips			
2843048-1	NETCONNECT Modular Plug Boot, 8-Position Plug, Slim-line, Transparent, 5.7 mm max cable OD	Cat.5 & Cat.5e/ Unshielded	Transparent
2111797-1	NETCONNECT Modular Plug Boot, 8-Position Plug, Slim-line, Transparent, 6.2mm Max Cable OD	Cat.5 & Cat.5e/ Unshielded	Transparent
2843033-3	NETCONNECT Modular Plug Boot, 8-Position Plug, Slim-line, Transparent, 5.7 to 7.0 mm Cable OD	Cat.6/ Shielded	Transparent



MODULAR PLUG COLOR CLIP (USED WITH NPC PATCH CORDS)		
MATERIAL ID	DESCRIPTION	COLOR
2843022-5	NETCONNECT Modular Plug Color Clip, Orange, 50 pcs	Orange
2843022-6	NETCONNECT Modular Plug Color Clip, Blue, 50 pcs	Blue
2843022-7	NETCONNECT Modular Plug Color Clip, Red, 50 pcs	Red
2843022-8	NETCONNECT Modular Plug Color Clip, Yellow, 50 pcs	Yellow
2843022-9	NETCONNECT Modular Plug Color Clip, Green, 50 pcs	Green
2843022-1	NETCONNECT Modular Plug Color Clip, Almond, 50 pcs	Almond
2843022-2	NETCONNECT Modular Plug Color Clip, Black, 50 pcs	Black
2843022-3	NETCONNECT Modular Plug Color Clip, White, 50 pcs	White
2843022-4	NETCONNECT Modular Plug Color Clip, Gray, 50 pcs	Gray
2843022-5	NETCONNECT Modular Plug Color Clip, Orange, 50 pcs	Orange

Copper solutions

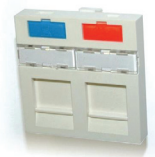
Faceplate & Accessories

FACEPLATES US STYLE			
MATERIAL ID	DESCRIPTION	PORT	COLOR
272368-1	Faceplate, single port, shutter, US style	1	Almond
272368-2	Faceplate, dual port, shutter, US style	2	Almond
760255233	Faceplate, single port, shutter, US style	1	White
760255234	Faceplate, dual port, shutter, US style	2	White
Decor Faceplate			
2-1427030-1	Decor faceplate, single port, shutter, US style	1	White
2-1427030-2	Decor faceplate, dual port, shutter, US style	2	White
2-1427030-3	Decor faceplate, triple port, shutter, US style	3	White
4 Ports Faceplate			
760249154	Faceplate, labeled, 1-gang, 4 port, US style, universal opening	4	Light Almond
760249146	Faceplate, labeled, 1-gang, 4 port, US style, universal opening	4	Prowhite
Angled Faceplate			
1-1375155-3	Faceplate, 2 port, angled, flush mount, US style	2	White

FACEPLATES UK STYLE	
MATERIAL ID	DESCRIPTION
760249249	Faceplate Kit, 1 port, universal opening port, BS, White
760249251	Faceplate Kit, 2 ports, universal opening port, BS, White
760249253	Faceplate Kit, 4 ports, universal opening port, BS, White
760253100	Faceplate Kit, 1 port, universal opening port, BS, unshuttered, White
760249256	Faceplate Kit, 2 port, universal opening port, BS, unshuttered, White
760254617	Faceplate Kit, 4 port, universal opening port, BS, unshuttered, White



SINGLE AND DUAL OUTLETS 45 X 45 MM ("MOSAIC"), USED WITH LEGRAND FACEPLATE		
MATERIAL ID	DESCRIPTION	COLOR
1711276-1	Dual Port Outlet, shuttered flat, for 2 SL information outlets, 45 x 45 mm	White
1711277-1	Single Port Outlet, shuttered flat, for 1 SL information outlet, 45 x 45 mm	White
1711349-1	Single Port Outlet, shuttered flat, for 1 SL information outlet, 22.5 x 45 mm	White



Copper solutions

Faceplate & Accessories



BOXES		
MATERIAL ID	DESCRIPTION	COLOR
Surface & Ceiling Mount Box		
760248524	Surface Mount Office Box, universal opening port, 1 port, unloaded	Almond
760248528	Surface Mount Office Box, universal opening port, 2 port, unloaded	Almond
760248523	Surface Mount Office Box, universal opening port, 1 port, unloaded	Prowhite
760248527	Surface Mount Office Box, universal opening port, 2 port, unloaded	Prowhite
Zone Box		
1933671-2	Surface Mount Module, 4 port	Black
1933674-2	Surface Mount Module, 6 port	Black
1479358-2	Surface Mount Module, 12 port	Black
1479398-1	Surface Mount Module Magnet (used with 1479358-2)	Black
Meeting Room Solution		
1-1671163-1	Consolidation Point Enclosure, 4-port, twist/SL information outlet	Black
2111500-2	SL Series HDMI Coupler Insert	Black
1-1499836-1	SL Series, Adapter SC Simplex, Single-mode/Multimode	Almond
1933286-6	SL Fiber Optic Insert Adapter, LC, duplex, singlemode/multimode	Aqua
1933286-4	SL Fiber Optic Insert Adapter, LC, duplex, singlemode/multimode	Blue

Copper solutions

Faceplate & Accessories



CONSOLIDATION POINT			
MATERIAL ID	PRODUCT NUMBER	DESCRIPTION	MODULE
UTP Copper (Support Cat6A, Cat6, Cat5e)			
64501105-21	6450 1 105-21	Highband® Consolidation Point, category 6A, 100-pair	100 Pairs
Mixed Copper & Fiber Box			
406771-1		Consolidation point assembly (unloaded)	4
1479322-1		Consolidation point assembly, center feed, dual support, foor box (unloaded)	6
1479696-1		Unshielded Multimedia Module, 6 ports, accepts SL Series inserts	1
1499836-9		SL Series, Adapter SC Simplex, Single-mode/Multimode, Green	-



NETCONNECT SL TOOL	
MATERIAL ID	DESCRIPTION
1725150-6	Jack Termination Tool with Lacing Fixture (SLX / SL / KJ / UNJ)

Copper solutions

Horizontal Cable Management

HORIZONTAL CABLE MANAGEMENT	
MATERIAL ID	DESCRIPTION
760072942	CommScope Cable Management Panel, Horizontal, Metal Finger Duct, 1U, black
760072959	CommScope Cable Management Panel, Horizontal, Metal Finger Duct, 2U, black
760038240	CommScope Cable Management Panel, Horizontal, Metal 4 Ring, 1U, black



760072942



760072959



760038240

Copper solutions

Outdoor Application

NETCONNECT CATEGORY 6			
MATERIAL ID	DESCRIPTION	JACKET	TYPE
1427319-1	NETCONNECT Category 6, 4 pair, 23AWG, U/UTP, PE, 1000ft, Pull-box, black	PE	U/UTP



NETCONNECT CATEGORY 6A F/UTP			
MATERIAL ID	DESCRIPTION	JACKET	TYPE
CO11192-01F###	NETCONNECT Patch cord, Category 6A, 4pair, Stranded F/UTP, LSZH, Black, X ft	PE	F/UTP

NOTE: Replace ### with length in feet. Eg: 004 = 4F, 007 = 7F, 010 = 10F

Powered Fiber solutions

POWERED FIBER CABLE SYSTEM

- Outdoor and riser/LSZH, indoor-/outdoor-rated solutions
- Complies with SELV and NEC Class 2
- Peel-away jacket for fast cable access
- Utilizes globally existing, proven and inexpensive FTTH-style flat cable hardware



COMMSCOPE POWERED FIBER CABLE SYSTEM

MATERIAL ID	DESCRIPTION
PFC-S02L12	Powered Fiber Cable, Indoor/Outdoor, OS2, 2 Fibers, 2 x 12 AWG Conductors
PFC-S02L16	Powered Fiber Cable, Indoor/Outdoor, OS2, 2 Fibers, 2 x 16 AWG Conductors
PFC-S02O12	Powered Fiber Cable, Outdoor, OS2, 2 Fibers, 2 x 12 AWG Conductors
PFC-S02O16	Powered Fiber Cable, Outdoor, OS2, 2 Fibers, 2 x 16 AWG Conductors
PFC-S04L12	Powered Fiber Cable, Indoor/Outdoor, OS2, 4 Fibers, 2 x 12 AWG Conductors
PFC-S04L16	Powered Fiber Cable, Indoor/Outdoor, OS2, 4 Fibers, 2 x 16 AWG Conductors
PFC-S04O12	Powered Fiber Cable, Outdoor, OS2, 4 Fibers, 2 x 12 AWG Conductors
PFC-S04O16	Powered Fiber Cable, Outdoor, OS2, 4 Fibers, 2 x 16 AWG Conductors
PFC-S12L12	Powered Fiber Cable, Indoor/Outdoor, OS2, 12 Fibers, 2 x 12 AWG Conductors
PFC-S12L16	Powered Fiber Cable, Indoor/Outdoor, OS2, 12 Fibers, 2 x 16 AWG Conductors
PFC-S12O12	Powered Fiber Cable, Outdoor, OS2, 12 Fibers, 2 x 12 AWG Conductors
PFC-S12O16	Powered Fiber Cable, Outdoor, OS2, 12 Fibers, 2 x 16 AWG Conductors
PFC-302L12	Powered Fiber Cable, Indoor/Outdoor, OM3, 2 Fibers, 2 x 12 AWG Conductors
PFC-302L16	Powered Fiber Cable, Indoor/Outdoor, OM3, 2 Fibers, 2 x 16 AWG Conductors
PFC-302O12	Powered Fiber Cable, Outdoor, OM3, 2 Fibers, 2 x 12 AWG Conductors
PFC-302O16	Powered Fiber Cable, Outdoor, OM3, 2 Fibers, 2 x 16 AWG Conductors
PFC-304L12	Powered Fiber Cable, Indoor/Outdoor, OM3, 4 Fibers, 2 x 12 AWG Conductors
PFC-304L16	Powered Fiber Cable, Indoor/Outdoor, OM3, 4 Fibers, 2 x 16 AWG Conductors
PFC-304O12	Powered Fiber Cable, Outdoor, OM3, 4 Fibers, 2 x 12 AWG Conductors
PFC-304O16	Powered Fiber Cable, Outdoor, OM3, 4 Fibers, 2 x 16 AWG Conductors

Powered Fiber solutions

POE EXTENDERS

- One- and two-port models
- IP68-rated seal for outdoor protection against moisture and the environment
- Automatically corrects for the cable's voltage drop over distance
- Integrated electrical protection
- Two-port extender connects two PoE or PoE+ devices with one hybrid cable
- One-port extender supports 802.3bt Class 6 power levels
- Supports SPF+ transceivers and 5 GbE via the copper port

MATERIAL ID	DESCRIPTION
PFU-P-C-O-060-02	60W, 2 Port PoE Extender*
PFU-P-E-O-060-01	60W, 1 Port 5 Gbps PoE Extender

*The 60W, 2-port PoE Extender provides a maximum of 30W on each port.

POWER EXTENDERS (FIBER PASS-THROUGH)

- The same power management and electrical protection as PoE extenders
- Support devices requiring direct fiber input and direct current (DC) power
- IP68-rated seal for outdoor protection against moisture and the environment

MATERIAL ID	DESCRIPTION
PFU-48-C-O-060-01	Power extender fiber pass through 48VDC
PFU-12-C-O-060-01	Power extender fiber pass through 12VDC

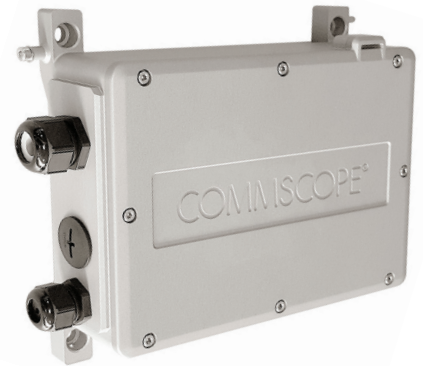
POWER SUPPLIES

- 57 VDC power supply for use with Powered Fiber Cable System

MATERIAL ID	DESCRIPTION
PFP-PX-S1	Power Express Distribution shelf with alarm module
PFP-PX-8M	Power Express Distribution module supports max. 8 Devices
PFP-PX-SF	Power Express Blank Slot Panel
PFP-SPS-S1	SPS Rectifier Power Distribution Shelf
PFP-SPS-1600M	1600W SPS Power Rectifier module
PFP-SPS-C1	SPS Rectifier Controller Display
PFP-SPS-SF	SPS Rectifier Blank Slot Panel



PFU-P-C-O-060-02



PFU-48-C-O-060-01



Powered Fiber solutions

SURFACE-MOUNT BOXES

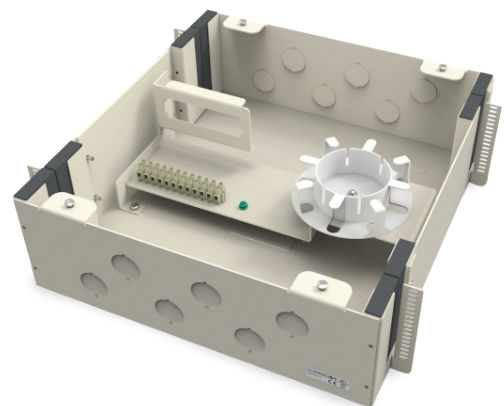
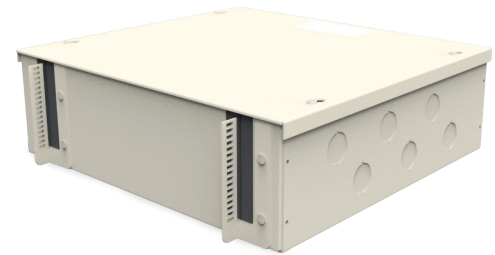
- Support structured cabling labeling and administration
- Protect powered fiber cables and connections
- Provide a clean end point for terminating new indoor plenum powered fiber cables
- Support for multi-gigabit Wi-Fi access points
- Support for new and existing powered fiber cables

MATERIAL ID	DESCRIPTION
760248944	Kit, SMB, 1 Fiber Port, 1 Power Port, Beige
760248943	Kit, SMB, 1 Fiber Port, 1 Power Port, White
760248942	Kit, SMB, 1 Fiber Port, 1 Power Port, Black
760249095	Kit, SMB, 2 Fiber Ports, 2 Power Ports, Beige
760249094	Kit, SMB, 2 Fiber Ports, 2 Power Ports, White
760249093	Kit, SMB, 2 Fiber Ports, 2 Power Ports, Black

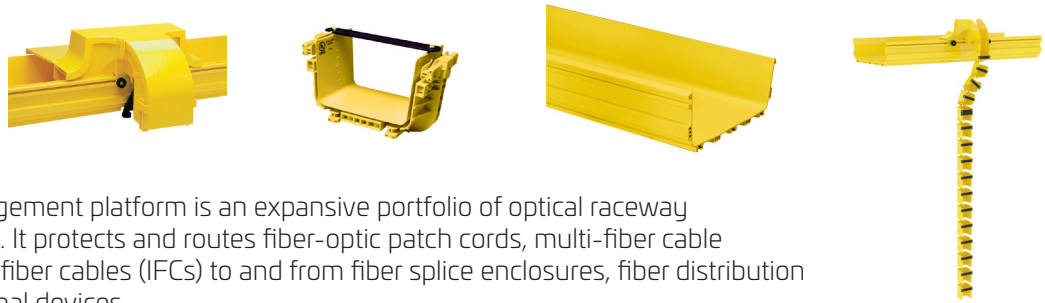


POWERED FIBER CABLE (PLENUM) TRANSITION BOX

- Easy and secure transition point for indoor-to-outdoor powered fiber cables
- Terminates permanent link, powered fiber cables for future end devices
- Plenum-rated enclosure
- Surface-mounted installation
- Meets UL2043, UL1863, UL62360 and CE safety standards
- Dimensions: 4.37 in (111 mm) x 14.18 in (360 mm) x 14.57 in (370 mm)
- Internal interfaces: six fiber LC duplex and six two-wire terminals
- Interface capacity: six channels
- Input power: 100 W per channel (NEC Class 2)
- Input voltage: 30 V AC | 60 V DC per channel
- Environmental space: Indoor | Plenum
- Weight: 14 lbs. (6.35 kg)
- Package quantity: 1



MATERIAL ID	DESCRIPTION
760250853	PFC Transition Box, Plenum rated, cool gray



The FiberGuide™ fiber management platform is an expansive portfolio of optical raceway components and capabilities. It protects and routes fiber-optic patch cords, multi-fiber cable assemblies and intra-facility fiber cables (IFCs) to and from fiber splice enclosures, fiber distribution frames and fiber-optic terminal devices.

Tool-less, FiberGuide Snap-Fit™ junctions significantly reduce the installation time. FiberGuide platform is available in a variety of sizes and basic components, including horizontal and vertical straight sections, horizontal and vertical elbows, downspouts, junctions, and numerous support hardware and flex-vertical kits.

Width and height options range from 50 mm x 50 mm to 100 mm x 600 mm, with the most commonly deployed sizes listed in the ordering tables below. To see all sizes and options, please download the [FiberGuide ordering guide](#).

STRAIGHT SECTIONS & FITTINGS			
DESCRIPTION	100x150mm	100x300mm	100x600mm
Straight Section Horizontal - L= 1,83 mtr	FGS-MSHS-B	FGS-MSHS-F	FGS-MSHS-H
Straight Section Cover	FGS-MSNC-B/G	FGS-MSNC-F	FGS-FSFC-H
Horizontal Cross	FGS-MHXP-B	FGS-MHXP-F	FGS-MHXP-H
Horizontal Cross Cover	FGS-SHXP-B	FGS-SHXP-F	FGS-FHXP-H
T-Adapter - Horizontal	FGS-MHRT-B	FGS-MHRT-F	FGS-MHRT-H
90° Elbow - Horizontal	FGS-MH9E-B	FGS-MH9E-F	
90° Elbow Vertical - Up With Cover	FGS-MU9E-B		
90° Elbow Vertical - Down	FGS-MD9E-B	FGS-MD9E-F	
45° Elbow - Horizontal	FGS-MH4E-B	FGS-MH4E-F	FGS-MH4E-H
45° Elbow Vertical - Up With Cover	FGS-MU4E-B	FGS-MU4E-F	FGS-MU4E-H
45° Elbow Vertical - Down	FGS-MD4E-B	FGS-MD4E-F	FGS-MD4E-H
Trumpet Flare	FGS-MTRM-B	FGS-MTRM-F	FGS-MTRM-H
End Cap	FGS-HMEC-B	FGS-HMEC-F	FGS-HMEC-H

JUNCTIONS			
DESCRIPTION	100x150mm	100x300mm	100x600mm
Junctions/Joiners	FGS-MFAW-B	FGS-MFAW-F	FGS-MFAW-H

FIXED DOWNSPOUTS			
DESCRIPTION	100x150mm	100x300mm	100x600mm
Downspout kit	FGS-MDSP-B	FGS-MDSP-F	
Cover	FGS-MCDS-AB	FGS-SDSP-F	

EXPRESS EXIT™ DOWNSPOUTS

DESCRIPTION	100x150mm	100x300mm	100x600mm
50mm Express Exit	FGS-MEXP-A/B/F	FGS-MEXP-A/B/F	FGS-MEXP-A/B/F
50mm Low-profile Express Exit	FGS-MEXP-LP-A/B/F	FGS-MEXP-LP-A/B/F	FGS-MEXP-LP-A/B/F
100mm Express Exit	FGS-MEXP-E-A/B/F	FGS-MEXP-E-A/B/F	FGS-MEXP-E-A/B/F
Express Exit Rear Hinged Cover for 100x300 Raceway, Yellow		FGS-MEXC-E-F	
300mm Express Exit, No Cover		FGS-MEXP-F-F/H-NC	FGS-MEXP-F-F/H-NC

DOWNSPOUT ACCESSORIES

DESCRIPTION	100x150mm	100x300mm	100x600mm
Single 50mm Flex Tube Attachment, 50x50mm	FGS-MEX1-C-0F	FGS-MEX1-C-0F	FGS-MEX1-C-0F
Single 50mm Flex Tube Attachment, 100x100mm	FGS-KT03-A1NH	FGS-KT03-A1NH	FGS-KT03-A1NH
Dual 50mm Flex Tube Attachment, 100x100mm	FGS-KT03-ANH	FGS-KT03-ANH	FGS-KT03-ANH
Dual 50mm Flex Tube Attachment, 100x150mm	FGS-KT03-B-0F	FGS-KT03-B-0F	FGS-KT03-B-0F
50mm Flex Tube, Slotted (x= length in feet 5, 10, 15, 20, 25, 30, 35, 40, 45, 50....)	FGS-MIDY-xF	FGS-MIDY-xF	FGS-MIDY-xF
FlexVertical Kit, 50x50mm, 1219mm length	FGS-FLEXV-4F-C	FGS-FLEXV-4F-C	FGS-FLEXV-4F-C
FlexVertical Kit, 50x50mm, 2133mm length	FGS-FLEXVAD-7F-C	FGS-FLEXVAD-7F-C	FGS-FLEXVAD-7F-C
FlexVertical Dual Kit, 100x100mm to Dual 50x50mm, 1219mm length	FGS-FLEXV-4F-A2C	FGS-FLEXV-4F-A2C	FGS-FLEXV-4F-A2C

BRACKETS FOR THREADED RODS

DESCRIPTION	100x150mm	100x300mm	100x600mm
New Threaded Rod Bracket 12mm	FGS-HNTR-12MM	FGS-HNTR-F-12MM	
New Threaded Rod Bracket 16mm		FGS-HNTP-F-16MM	FGS-HNTP-H-16MM
Trapeze Support Bracket 12mm		FGS-HNTP-F-12MM	
C- Bracket Threaded Rod 12mm	FGS-HNTS-12MM	FGS-HNTS-F-12MM	FGS-HNTS-H-12MM-A
C- Bracket Threaded Rod 16mm	FGS-HNTS-16MM	FGS-HNTS-F-16MM	

TOOLS

DESCRIPTION	100x150mm	100x300mm	100x600mm
Mitre Box with Saw for 50, 100, 150 & 300mm Straight Section	FGS-MKIT-ABF	FGS-MKIT-ABF	FGS-MKIT-H

Fiber solutions

Fiber Optic Cable

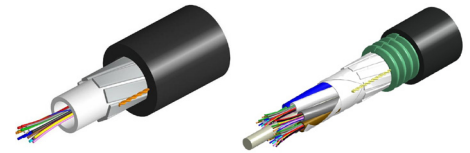


COMMSCOPE INDOOR, LSZH & OFNR DUAL RATE CABLE - APAC					
FIBER CORE	CABLE TYPE	OM5	OM4	OM3	SM
2	CommScope Fiber Optic Cable, Indoor, LSZH & OFNR, 2 Fibers	760257845	760249363	760249357	760249369
4	CommScope Fiber Optic Cable, Indoor, LSZH & OFNR, 4 Fibers	760257846	760249364	760249358	760249370
6	CommScope Fiber Optic Cable, Indoor, LSZH & OFNR, 6 Fibers	760257847	760249365	760249359	760249371
8	CommScope Fiber Optic Cable, Indoor, LSZH & OFNR, 8 Fibers	760257848	760249366	760249360	760249372
12	CommScope Fiber Optic Cable, Indoor, LSZH & OFNR, 12 Fibers	760257849	760249367	760249361	760249373
24	CommScope Fiber Optic Cable, Indoor, LSZH & OFNR, 24 Fibers	760257850	760249368	760249362	760249374
48	CommScope Fiber Optic Cable, Indoor, LSZH & OFNR, 48 Fibers	–	760250119	760250122	760250125
72	CommScope Fiber Optic Cable, Indoor, LSZH & OFNR, 72 Fibers	–	760250121	760250118	760250120
96	CommScope Fiber Optic Cable, Indoor, LSZH & OFNR, 96 Fibers	–	760250123	760250124	760250117

COMMSCOPE INDOOR, OFNP DISTRIBUTION CABLE - APAC					
FIBER CORE	CABLE TYPE	OM5	OM4	OM3	SM
2	CommScope Fiber Optic Cable, Indoor, OFNP, 2 Fibers	760255261	760255257	760255255	760255259
4	CommScope Fiber Optic Cable, Indoor, OFNP, 4 Fibers	760255262	760255258	760255256	760255260
6	CommScope Fiber Optic Cable, Indoor, OFNP, 6 Fibers	760253573	760248757	760251671	760249758
8	CommScope Fiber Optic Cable, Indoor, OFNP, 8 Fibers	760253574	760249029	760251670	760249759
12	CommScope Fiber Optic Cable, Indoor, OFNP, 12 Fibers	760253575	760249030	760251669	760249760
24	CommScope Fiber Optic Cable, Indoor, OFNP, 24 Fibers	760253576	760249031	760251668	760249761

Fiber solutions

Fiber Optic Cable



COMMSCOPE INDOOR/OUTDOOR GEL LSZH CENTRAL TUBE CABLE – APAC

FIBER CORE	DESCRIPTION	OM5	OM4	OM3	SM
2	CommScope Fiber Optic Cable, Indoor/OutDoor, LSZH, 2 Fibers	760257832	760251948	760251945	760251942
4	CommScope Fiber Optic Cable, Indoor/OutDoor, LSZH, 4 Fibers	760257833	760251949	760251946	760251943
8	CommScope Fiber Optic Cable, Indoor/OutDoor, LSZH, 8 Fibers	760257834	760251950	760251947	760251944
6	CommScope Fiber Optic Cable, Indoor/OutDoor, LSZH, 6 Fibers	760257835	760249716	760249713	760249710
12	CommScope Fiber Optic Cable, Indoor/OutDoor, LSZH, 12 Fibers	760257836	760249717	760249714	760249711
24	CommScope Fiber Optic Cable, Indoor/OutDoor, LSZH, 24 Fibers	760257837	760249718	760249715	760249712

COMMSCOPE INDOOR/OUTDOOR GEL LSZH STRANDED LOOSE TUBE CABLE – APAC

FIBER CORE	DESCRIPTION	OM4	OM3	SM
24	CommScope Fiber Optic Cable, Indoor/OutDoor, LSZH, 24 Fibers	760251966	760251964	760251960
36	CommScope Fiber Optic Cable, Indoor/OutDoor, LSZH, 36 Fibers	760251967	760251965	760251961
48	CommScope Fiber Optic Cable, Indoor/OutDoor, LSZH, 48 Fibers	760249744	760249742	760249740
72	CommScope Fiber Optic Cable, Indoor/OutDoor, LSZH, 72 Fibers	760249745	760249743	760249741
96	CommScope Fiber Optic Cable, Indoor/OutDoor, LSZH, 96 Fibers			760251962
144	CommScope Fiber Optic Cable, Indoor/OutDoor, LSZH, 144 Fibers			760251963

COMMSCOPE INDOOR/OUTDOOR GEL LSZH CENTRAL LOOSE TUBE CABLE, ARMORED – APAC

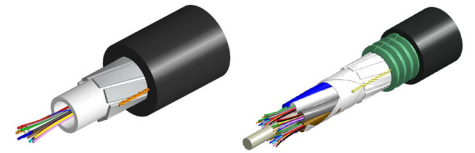
FIBER CORE	DESCRIPTION	OM5	OM4	OM3	SM
2	CommScope Fiber Optic Cable, Indoor/OutDoor, LSZH, 2 Fibers	760257838	760251957	760251954	760251951
4	CommScope Fiber Optic Cable, Indoor/OutDoor, LSZH, 4 Fibers	760257839	760251958	760251955	760251952
8	CommScope Fiber Optic Cable, Indoor/OutDoor, LSZH, 8 Fibers	760257840	760251959	760251956	760251953
6	CommScope Fiber Optic Cable, Indoor/OutDoor, CST LSZH, 6 Fibers	760257841	760249725	760249722	760249719
12	CommScope Fiber Optic Cable, Indoor/OutDoor, CST LSZH, 12 Fibers	760257842	760249726	760249723	760249720
24	CommScope Fiber Optic Cable, Indoor/OutDoor, CST LSZH, 24 Fibers	760257843	760249727	760249724	760249721

COMMSCOPE INDOOR/OUTDOOR GEL LSZH STRANDED LOOSE TUBE CABLE, ARMORED – APAC

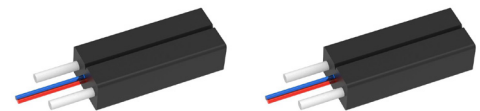
FIBER CORE	DESCRIPTION	OM4	OM3	SM
24	CommScope Fiber Optic Cable, Indoor/OutDoor, CST LSZH, 24 Fibers	760251974	760251972	760251968
36	CommScope Fiber Optic Cable, Indoor/OutDoor, CST LSZH, 36 Fibers	760251975	760251973	760251969
48	CommScope Fiber Optic Cable, Indoor/OutDoor, CST LSZH, 48 Fibers	760249750	760249748	760249746
72	CommScope Fiber Optic Cable, Indoor/OutDoor, CST LSZH, 72 Fibers	760249751	760249749	760249747
96	CommScope Fiber Optic Cable, Indoor/OutDoor, CST LSZH, 96 Fibers			760251970
144	CommScope Fiber Optic Cable, Indoor/OutDoor, CST LSZH, 144 Fibers			760251971

Fiber solutions

Fiber Optic Cable



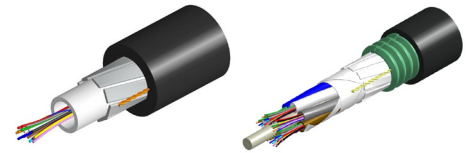
COMMSCOPE INDOOR/OUTDOOR LSZH DISTRIBUTION CABLE - APAC			
FIBER CORE	DESCRIPTION	OM4	SM
4	CommScope Fiber Optic Cable, Indoor/OutDoor, LSZH, 4 Fibers	760256082	760256079
6	CommScope Fiber Optic Cable, Indoor/OutDoor, LSZH, 6 Fibers	760254208	760256080
12	CommScope Fiber Optic Cable, Indoor/OutDoor, LSZH, 12 Fibers	760254209	760253993
24	CommScope Fiber Optic Cable, Indoor/OutDoor, LSZH, 24 Fibers	760254163	760256081



COMMSCOPE INDOOR/OUTDOOR, FIGURE 8 DROP CABLE - APAC		
FIBER CORE	DESCRIPTION	SM
2	CommScope Fiber Optic Cable, Indoor/Outdoor, Figure 8 Drop, 2 Fibers	760254876
4	CommScope Fiber Optic Cable, Indoor/Outdoor, Figure 8 Drop, 4 Fibers	760254877

Fiber solutions

Fiber Optic Cable



COMMSCOPE OSP GEL CENTRAL TUBE CABLE - APAC

FIBER CORE	DESCRIPTION	OM5	OM4	OM3	SM
2	CommScope Fiber Optic Cable, Outside Plant, 2 Fibers	760257820	760252025	760252022	760252019
4	CommScope Fiber Optic Cable, Outside Plant, 4 Fibers	760257821	760252026	760252023	760252020
8	CommScope Fiber Optic Cable, Outside Plant, 8 Fibers	760257822	760252027	760252024	760252021
6	CommScope Fiber Optic Cable, Outside Plant, 6 Fibers	760257823	760249698	760249695	760249692
12	CommScope Fiber Optic Cable, Outside Plant, 12 Fibers	760257824	760249699	760249696	760249693
24	CommScope Fiber Optic Cable, Outside Plant, 24 Fibers	760257825	760249700	760249697	760249694

COMMSCOPE OSP GEL LOOSE TUBE CABLE - APAC

FIBER CORE	DESCRIPTION	OM4	OM3	SM
24	CommScope Fiber Optic Cable, Outside Plant, 24 Fibers	760252043	760252041	760252037
36	CommScope Fiber Optic Cable, Outside Plant, 36 Fibers	760252044	760252042	760252038
48	CommScope Fiber Optic Cable, Outside Plant, 48 Fibers	760249732	760249730	760249728
72	CommScope Fiber Optic Cable, Outside Plant, 72 Fibers	760249733	760249731	760249729
96	CommScope Fiber Optic Cable, Outside Plant, 96 Fibers			760252039
144	CommScope Fiber Optic Cable, Outside Plant, 144 Fibers			760252040

COMMSCOPE OSP GEL CENTRAL TUBE CABLE, ARMORED - APAC

FIBER CORE	DESCRIPTION	OM5	OM4	OM3	SM
2	CommScope Fiber Optic Cable, Outside Plant, CST, 2 Fibers	760257826	760252034	760252031	760252028
4	CommScope Fiber Optic Cable, Outside Plant, CST, 4 Fibers	760257827	760252035	760252032	760252029
8	CommScope Fiber Optic Cable, Outside Plant, CST, 8 Fibers	760257828	760252036	760252033	760252030
6	CommScope Fiber Optic Cable, Outside Plant, CST, 6 Fibers	760257829	760249707	760249704	760249701
12	CommScope Fiber Optic Cable, Outside Plant, CST, 12 Fibers	760257830	760249708	760249705	760249702
24	CommScope Fiber Optic Cable, Outside Plant, CST, 24 Fibers	760257831	760249709	760249706	760249703

COMMSCOPE OSP GEL LOOSE TUBE CABLE, ARMORED - APAC

FIBER CORE	DESCRIPTION	OM4	OM3	SM
24	CommScope Fiber Optic Cable, Outside Plant, CST, 24 Fibers	760252051	760252049	760252045
36	CommScope Fiber Optic Cable, Outside Plant, CST, 36 Fibers	760252052	760252050	760252046
48	CommScope Fiber Optic Cable, Outside Plant, CST, 48 Fibers	760249738	760249736	760249734
72	CommScope Fiber Optic Cable, Outside Plant, CST, 72 Fibers	760249739	760249737	760249735
96	CommScope Fiber Optic Cable, Outside Plant, CST, 96 Fibers			760252047
144	CommScope Fiber Optic Cable, Outside Plant, CST, 144 Fibers			760252048

Fiber panel portfolios

EPX™ panels for G2™ modules, cassettes and adapter packs



The EPX G2 family of fiber panels, modules, cassettes, adapter packs, wall boxes and accessories provides configurations and capabilities for almost any application. Polarity type, fiber count or performance requirements; you name it, the G2 family has it.

G2 EPX panels

The G2 EPX panel is a low-cost solution for usable density in a 1U format.

G2 PANELS				
Density	Series	Material ID	Product Number	Description
96 LC/RU 32 MPO/RU	EPX Simple & Cost Effective	760241517	EPX-1U-MOD-OPEN-F-FX	EPX Foldable Arm Open Rear Fixed, Flat Plate
		760241518	EPX-1U-MOD-OPEN-F-ANG-FX	EPX Foldable Arm Open Rear Fixed, Angled Plate
	EPX - Express Compact & Flexible	760254918	EPX-1U-MOD-OPEN	EPX 1U G2 Open Sliding Fiber Panel
		760251098	EPX-1U-MOD-OPEN-FX	EPX 1U G2 Open Fixed Fiber Panel
		760249998	EPX-1U-MOD-ENC	EPX 1U G2 Enclosed Sliding Fiber Panel
		760251044	EPX-2U-MOD-ENC	EPX 2U G2 Enclosed Sliding Fiber Panel
		760251048	EPX-4U-MOD-ENC	EPX 4U G2 Enclosed Sliding Fiber Panel
		760251042	EPX-1U-MOD-ENC-FX	EPX 1U G2 Enclosed Fixed Fiber Panel
		760251046	EPX-2U-MOD-ENC-FX	EPX 2U G2 Enclosed Fixed Fiber Panel
		760251050	EPX-4U-MOD-ENC-FX	EPX 4U G2 Enclosed Fixed Fiber Panel

G2 modules

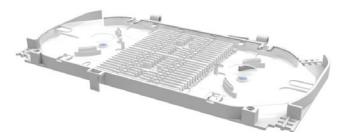
Wall-mount building enclosures provide fiber distribution management when space is at a premium. WBE-MODs are compatible with all G2 modules and adapter packs.

G2 WALL BOXES			
Density	Material ID	Description	
24 LC	760248900	WB2-EMT-BK-1P-MOD	
48 LC	760248901	WB2-EMT-BK-2P-MOD	
96 LC	760248902	WB2-EMT-BK-4P-MOD	
192 LC	760248903	WB2-EMT-BK-8P-MOD	



WB2-EMT-BK-2P-MOD

G2 ACCESSORIES		
EPX Panel Accessories		
760241378	EPX-SPLICE-48	EPX Splice Tray Kit
Miscellaneous		
760209619	CABLE-MOUNT-KIT-12	Cable attachment molding x 12
760058677	RMB-6-1/2	InstaPATCH Plus attachment bracket, rack mounted, six 1/2" fittings
760058685	RMB-6-3/8	InstaPATCH Plus attachment bracket, rack mounted, six 3/8" fittings
760109462	360G2-MOD-BLANK-4PK	Mod Panel Blank Adapter Pack, 4 Panels
760242678	Patch cord fitting kit with 12 cable glands	Gland to fix multiple MPO patchcords on HD/UD/EHD, 12 packs
760242679	Trunk fitting kit with 12 cable glands	Gland to fix multiple MPO 12/24F trunks on HD/UD/EHD, 12 packs



EPX-SPLICE-48

Fiber panel portfolios

G2 Modules



G2 MODULES - METHOD A						
	MPO 12 - 12 Fiber		MPO 12 - 24 Fiber		MPO 24 - 24 Fiber	
	Material ID	Product Number	Material ID	Product Number	Material ID	Product Number
LC Multimode (OM3-OM4)	760242493	DM12-12LC-LS-A	760242495	DM12-24LC-LS-A	760242497	DM24-24LC-LS-A
	760242494	DM12-12LC-LS-AF	760242496	DM12-24LC-LS-AF	760242502	DM24-24LC-LS-AF
LC Singlemode UPC	760242498	DM12-12LC-SM-A	760242500	DM12-24LC-SM-A	X	X
	760242499	DM12-12LC-SM-AF	760242501	DM12-24LC-SM-AF	X	X
LC Singlemode APC	760244686	DM12-12LCA-SM-A	760244688	DM12-24LCA-SM-A	X	X
	760244687	DM12-12LCA-SM-AF	760244689	DM12-24LCA-SM-AF	X	X
SC Singlemode APC	760245425	DM12-12SCA-SM-A	X	X	X	X
	760245426	DM12-12SCA-SM-AF	X	X	X	X



G2 CONVERSION MODULES- METHOD A		
	Material ID	Product Number
MPO12 (2) / MPO8 (3) OM4	760245325	CM12-2X3-LS-A
MPO12 (2) / MPO8 (3) OM4	760245326	CM12-2X3-LS-AF
MPO24 (1) / MPO8 (3) OM4	760245327	CM24-1X3-LS-A
MPO24 (2) / MPO8 (6) OM4	760245328	CM24-2X6-LS-A

Fiber panel portfolios

G2 Splice Cassettes



G2 SPLICE CASSETTES WITH PIGTAILS

Multimode		
Material ID	Product Number	Description
760244927	G2-SP-24LCX-PT	Splicing cassette, 24LC, OM4, pigtail
760245398	G2-SP-24LCV-PT	Splicing cassette, 24LC, OM5, pigtail
760245399	G2-SP-12LCX-PT	Splicing cassette, 12LC, OM4, pigtail
760245403	G2-SP-12LCV-PT	Splicing cassette, 12LC, OM5, pigtail
760248831	G2-SP-12SCX-PT	Splicing cassette, 12SC, OM4, pigtail
760244928	G2-SP-24LCX-RPT	Splicing cassette, 24LC, OM4, ribbon pigtail
760245400	G2-SP-12LCX-RPT	Splicing cassette, 12LC, OM4, ribbon pigtail
Singlemode		
760244929	G2-SP-24LCG-PT	Splicing cassette, 24LC, singlemode, pigtail
760245961	G2-SP-24LAG-PT	Splicing cassette, 24LC/APC, singlemode, pigtail
760245401	G2-SP-12LCG-PT	Splicing cassette, 12LC, singlemode, pigtail
760245960	G2-SP-12LAG-PT	Splicing cassette, 12LC/APC, singlemode, pigtail
760245963	G2-SP-12SCG-PT	Splicing cassette, 12SC/UPC, singlemode, pigtail
760245962	G2-SP-12SAG-PT	Splicing cassette, 12SC/APC, singlemode, pigtail
760234930	G2-SP-24LCG-RPT	Splicing cassette, 24LC, singlemode, ribbon pigtail
760245402	G2-SP-12LCG-RPT	Splicing cassette, 12LC, singlemode, ribbon pigtail

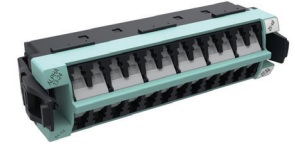


G2 SPLICE CASSETTES WITHOUT PIGTAIL

Material ID	Product Number	Description
760245494	G2-SP-24LC	Splicing cassette, 24LC, no pigtail
760245495	G2-SP-12LC	Splicing cassette, 12LC, no pigtail
760245496	G2-SP-12SC	Splicing cassette, 12SC, no pigtail
760245497	G2-SP-0000	Splicing cassette, no adapter, no pigtail

Fiber panel portfolios

G2 Adapter Packs



360DPis-24LC-LS

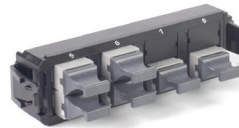
G2 ADAPTER PACKS				
	12 Fiber		24 Fiber	
	Material ID	Product Number	Material ID	Product Number
LC Multimode (OM3-OM4)	760230938	360DPis-12LC-LS	760216754	360DPis-24LC-LS
LC Multimode (OM5)	760236043	360DPis-12LC-WB	760236041	360DPis-24LC-WB
LC Singlemode	760230946	360DPis-12LC-SM	760216762	360DPis-24LC-SM
LC Singlemode APC	760230961	360DPis-12LCA-SM	760216770	360DPis-24LCA-SM
SC Multimode (OM3-OM4)	760134551	360DP-12SC-LS	X	X
SC Singlemode	760135087	360DP-12SC-SM	X	X
SC Singlemode APC	760135095	360DP-12SCA-SM	X	X



360DP-2MPO



360DP-4MPO



360DP-6MPO-BK



360DP-8MPO

G2 MPO ADAPTER PACKS - METHOD B		
	Material ID	Product Number
2 MPO	760107490	360DP-2MPO
4 MPO	760107508	360DP-4MPO
6 MPO	760107516	360DP-6MPO
8 MPO	760107524	360DP-8MPO

G2 MPO ADAPTER PACKS - METHOD A		
	Material ID	Product Number
2 MPO	760243438	360DP-2MPO-A
4 MPO	760243439	360DP-4MPO-A
6 MPO	760242723	360DP-6MPO-A
8 MPO	760242724	360DP-8MPO-A

Fiber panel portfolios

Standard density EPX panels for LGX/1000-style modules, cassettes and adapter packs



EPX LGX/1000-style standard density fiber-optic panels were specifically designed to make your building's infrastructure effective, efficient and easier to manage. They deliver high performance through modular and easy-to-use pigtailed splicing cassettes. The LGX/1000-style splice cassettes are designed for individual pigtails, each preloaded and prerouted for quick fusion splicing. These cassettes provide a protective space for fusion splicing, patching and storing your fiber-optic cables. By incorporating these advantages into a single cassette, you can be confident that your connections and cabling will be safeguarded from contamination or future damage.

LGX/1000 STYLE PANELS

Density	Solution	Material ID	Product Number	Description
72 LC / RU	EPX - Express Compact & Flexible	760254919	EPX-1U-PNL-OPEN	EPX 1U LGX/1000 STYLE Open Sliding Fiber Panel
		760251099	EPX-1U-PNL-OPEN-FX	EPX 1U LGX/1000 STYLE Open Fixed Fiber Panel
		760249997	EPX-1U-PNL-ENC	EPX 1U LGX/1000 STYLE Enclosed Sliding Fiber Panel
		760251045	EPX-2U-PNL-ENC	EPX 2U LGX/1000 STYLE Enclosed Sliding Fiber Panel
		760251049	EPX-4U-PNL-ENC	EPX 4U LGX/1000 STYLE Enclosed Sliding Fiber Panel
		760251043	EPX-1U-PNL-ENC-FX	EPX 1U LGX/1000 STYLE Enclosed Fixed Fiber Panel
		760251047	EPX-2U-PNL-ENC-FX	EPX 2U LGX/1000 STYLE Enclosed Fixed Fiber Panel
		760251051	EPX-4U-PNL-ENC-FX	EPX 4U LGX/1000 STYLE Enclosed Fixed Fiber Panel

LGX/1000 STYLE WALL BOXES

Description	Material ID	Product Number
24 LC	760248904	WB2-EMT-BK-1P-PNL
48 LC	760248905	WB2-EMT-BK-2P-PNL
96 LC	760248906	WB2-EMT-BK-4P-PNL
192 LC	760248907	WB2-EMT-BK-8P-PNL

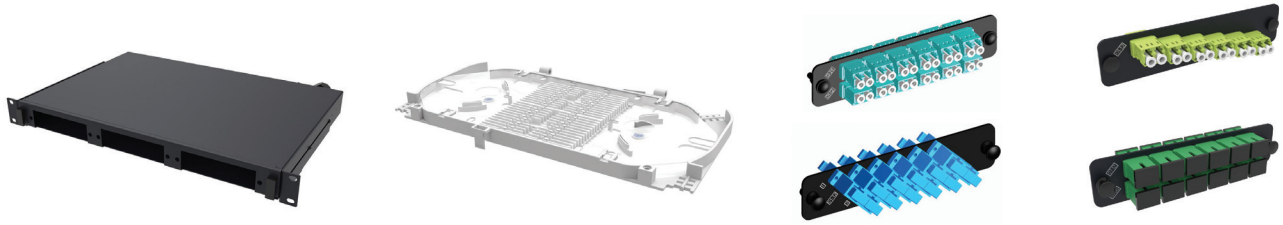


LGX/1000 STYLE SPLICING CASSETTE

Type	12 LC		24LC		12 SC	
	Material ID	Product Number	Material ID	Product Number	Material ID	Product Number
With Pigtail						
OM4	760221739	PNL-CS-12LCX-PT	760221697	PNL-CS-24LCX-PT	760221770	PNL-CS-12SCX-PT
OM5	760242108	PNL-CS-12LCV-PT	760242109	PNL-CS-24LCV-PT	-	-
SM UPC	760221747	PNL-CS-12LCW-PT	760221705	PNL-CS-24LCW-PT	760221788	PNL-CS-12SCW-PT
SM APC	760222596	PNL-CS-12LAW-PT	760222588	PNL-CS-24LAW-PT	760222604	PNL-CS-12SAW-PT
Without Pigtail						
OM4	760236500	PNL-CS-12LCX	760236503	PNL-CS-24LCX	760236506	PNL-CS-12SCX
OM5	760242110	PNL-CS-12LCV	760242111	PNL-CS-24LCV	-	-
SM UPC	760236501	PNL-CS-12LCW	760236504	PNL-CS-24LCW	760236507	PNL-CS-12SCW
SM APC	760236502	PNL-CS-12LAW	760236505	PNL-CS-24LAW	760236508	PNL-CS-12SAW
Blank Cassette						
Blank	760237458	PNL-CS-00000	SPLICING CASSETTE BLANK			

Fiber Panel Portfolios

APAC Local Splicing Solutions



1U 36/72F FIBER SPLICING SHELVE (SUPPORT 1000-TYPE ADAPTOR PLATE)

Material ID	Description			
760241725	1U Empty Shelf, support 3 1000-type adapter plates			
760241378	48F Splice Tray Kit with SMOUV			
760198325	1000 TYPE to G2 type ADPT KIT			
EM2454-001	1000 TYPE ADAPTER PLATE ASSY BLANK			
Adaptor Plate	12 LC Duplex	6 LC Duplex	6 SC Duplex	12 SC Simplex
OM4 (AQUA)	EK5808-001	EK5806-001	760241027	-
OM5 (Lime Green)	760242759	760242760	-	-
SM UPC (Blue)	EK5809-001	EK5807-001	EM1828-001	760242756
SM APC (Green)	760241025	760241026	760241028	760242438
Adaptor Plate	2 ports	6 ports	8 ports	12 ports
MPO Aligned Key	760015412	760034280	760056077	760242757
MPO Key up- Key down	-	-	-	760242758

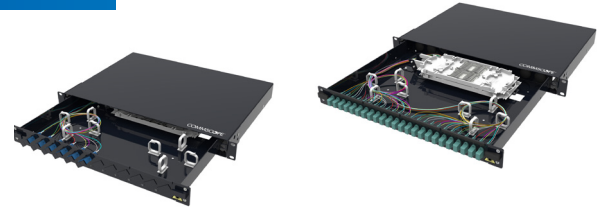


1U 12F/24F/48F/96F FIBER SPLICING SHELVE (INCLUDES ADAPTORS)

Material ID	Description
760245721	1U PANEL 12SC SIMP SM
760245722	1U PANEL 24SC SIMP SM
760249184	1U PANEL 48SC SIMP SM
760249187	1U PANEL 12SC SIMP MM
760249188	1U PANEL 24SC SIMP MM
760249186	1U PANEL 48SC SIMP MM
760241650	1U PANEL 12LC DUPL SM
760241651	1U PANEL 24LC DUPL SM
760249183	1U PANEL 48LC DUPL SM
760241652	1U PANEL 12LC DUPL MM
760241653	1U PANEL 24LC DUPL MM
760249185	1U PANEL 48LC DUPL MM

Fiber Panel Portfolios

FMS All-In-One Splicing Panel



Material ID	Product Number	Description
760254122	FMS-K1BI-S1A1-12-SP	FMS Panel, 1U, 19 in, black, Includes 6 x SC SM Duplex Adaptors (12F), 12 x SM SC Pigtaills. 12 x Splice protectors. Splice tray and cable glands
760254435	FMS-K2BI-S1A1-24-SP	FMS Panel, 1U, 19 in, black, Includes 12 x SC SM Duplex Adaptors (24F), 24 x SM SC Pigtaills. 24 x Splice protectors. Splice tray and cable glands
760254436	FMS-K1BI-L1A1-12-SP	FMS Panel, 1U, 19 in, black, Includes 6 x LC SM Duplex Adaptors (12F), 12 x SM LC Pigtaills. 12 x Splice protectors. Splice tray and cable glands
760254437	FMS-K2BI-L1A1-24-SP	FMS Panel, 1U, 19 in, black, Includes 12 x LC SM Duplex Adaptors (24F), 24 x SM LC Pigtaills. 24 x Splice protectors. Splice trays (2) and cable glands
760254438	FMS-K2BI-L1A1-48-SP	FMS Panel, 1U, 19 in, black, Includes 24 x LC SM Duplex Adaptors (48F), 48 x SM LC Pigtaills. 48 x Splice protectors. Splice trays (2) and cable glands
760254439	FMS-K1BI-SOM4-12-SP	FMS Panel, 1U, 19 in, black, Includes 6 x SC OM4 Duplex Adaptors (12F), 12 x OM4 SC Pigtaills. 12 x Splice protectors. Splice tray and cable glands
760254440	FMS-K2BI-SOM4-24-SP	FMS Panel, 1U, 19 in, black, Includes 12 x SC OM4 Duplex Adaptors (24F), 24 x OM4 SC Pigtaills. 24 x Splice protectors. Splice tray and cable glands
760254441	FMS-K1BI-LOM4-12-SP	FMS Panel, 1U, 19 in, black, Includes 6 x LC OM4 Duplex Adaptors (12F), 12 x OM4 LC Pigtaills. 12 x Splice protectors. Splice tray and cable glands
760254442	FMS-K2BI-LOM4-24-SP	FMS Panel, 1U, 19 in, black, Includes 12 x LC OM4 Duplex Adaptors (24F), 24 x OM4 LC Pigtaills. 24 x Splice protectors. Splice trays (2) and cable glands
760254443	FMS-K2BI-LOM4-48-SP	FMS Panel, 1U, 19 in, black, Includes 24 x LC OM4 Duplex Adaptors (48F), 48 x OM4 LC Pigtaills 48 x Splice protectors. Splice trays (2) and cable glands

Fiber Connectors and Adapters



QWIK II™ CONNECTORS KITS

Material ID	Product Number	Connector	Fiber	Cable	Housing color	Package
760117887	MFC-LCF-09-5X	LC	OM3/4/5	0.25/0.9 mm	Aqua	Single
760242343	MFC-LCF-UNV-5X*	LC	OM3/4/5	0.25/0.9/2.0/3.0 mm	Aqua	Single
760117895	SFC-LCF-09-8X	LC-UPC	OS2	0.25/0.9 mm	Blue	Single
760242344	SFC-LCF-UNV-8X*	LC-UPC	OS2	0.25/0.9/2.0/3.0 mm	Blue	Single
760242345	SFC-LCAF-UNV-8X*	LC-APC	OS2	0.25/0.9/2.0/3.0 mm	Green	Single
760184697	SFC-LCF-09-8A-25-PACK	LC-APC	OS2	0.25/0.9 mm	Green	25/pack
760117945	MFC-SCF-09-5X	SC	OM3/4/5	0.25/0.9 mm	Aqua	Single
760242346	MFC-SCF-UNV-5X*	SC	OM3/4/5	0.25/0.9/2.0/3.0 mm	Aqua	Single
760117952	SFC-SCF-09-8X	SC-UPC	OS2	0.25/0.9 mm	Blue	Single
760242347	SFC-SCF-UNV-8X*	SC-UPC	OS2	0.25/0.9/2.0/3.0 mm	Blue	Single
760242348	SFC-SCAF-UNV-8X*	SC-APC	OS2	0.25/0.9/2.0/3.0 mm	Green	Single
760184689	SFC-SCF-09-8A-25-PACK	SC-APC	OS2	0.25/0.9 mm	Green	25/pack

Material ID	Description
760242377	Basic, Toolkit, Qwik II Connector Termination
760248225	Premium Termination Toolkit for Field Installable Qwik II Connectors
760053207	Cleaning Consumables Kit, Fiber Optic

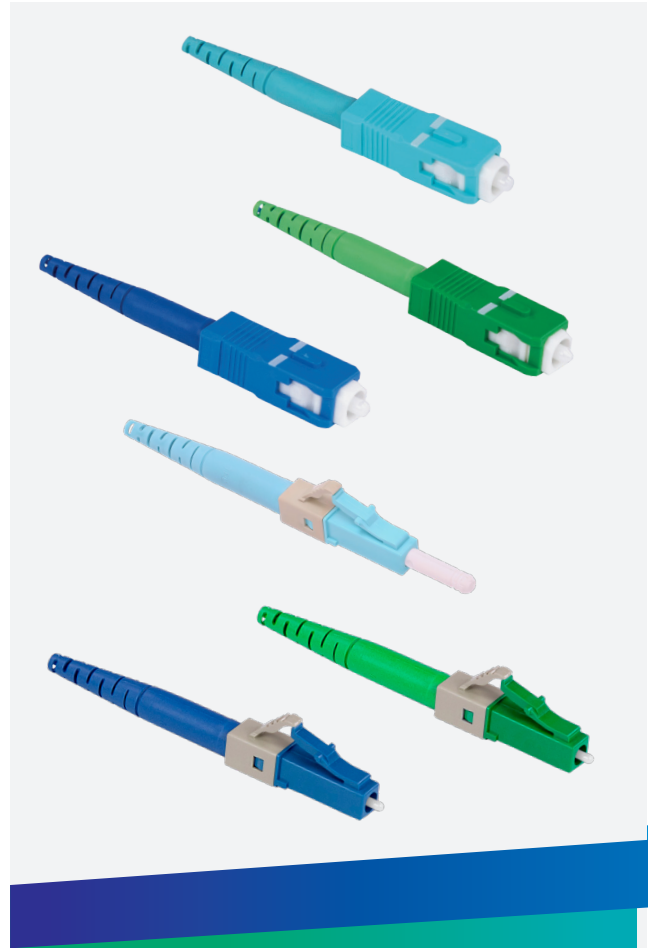
APAC LOCAL LC/SC ADAPTERS

Material ID	Description	Interface	Type
EH1457-002	LC Duplex Adapter, Flanged, Aqua	LC	MM
EH1458-002	LC Duplex Adapter, Flangeless, Aqua	LC	MM
CZ9340-000	LC/UPC Duplex Adapter, Flanged, Blue	LC	SM
CZ7270-000	LC/UPC Duplex Adapter, Flangeless, Blue	LC	SM
CZ7271-000	LC/APC Duplex Adapter, Flanged, Green	LC/APC	SM
CZ9341-000	LC/APC Duplex Adapter, Flangeless, Green	LC/APC	SM
2-5502776-6	SC/UPC Duplex Adapter, Flanged, Aqua	SC	MM
CZ9337-000	SC/UPC Duplex Adapter, Flanged, Blue	SC	SM
CZ9339-000	SC/APC Duplex Adapter, Flanged, Green	SC/APC	SM
CZ9338-000	SC/APC Duplex Adapter, Flangeless, Green	SC/APC	SM
CZ7267-000	SC/UPC Simplex Adapter, Flanged, Blue	SC	SM
CZ7266-000	SC/UPC Simplex Adapter, Flangeless, Blue	SC	SM
CZ9336-000	SC/APC Simplex Adapter, Flanged, Green	SC/APC	SM
CZ7268-000	SC/APC Simplex Adapter, Flangeless, Green	SC/APC	SM

QWIK®-Fuse connectors

CommScope QWIK-Fuse connectors utilize fusion splicing to provide superb insertion and return loss performance. Available in LC and SC styles, these connectors are compatible with existing fusion splicers and include the ferrule holder; CommScope also offers a competitively priced fusion splicer specifically for connector installation. Unlike many fusion-splice connectors, QWIK-Fuse connectors are completely contained within a standard connector footprint.

Fiber	SMF (OS2) MMF (OM3/4/5)
Cable diameter	250 µm, 900 µm, 1.6 mm, 2.0 mm, 3.0 mm
Polish	APC, UPC
Insertion loss	SMF: 0.15 dB (typical), 0.3 dB (max) MMF: 0.10 dB (typical), 0.25 dB (max)
Return loss	SMF: ≥65 dB (APC), ≥55 dB (UPC) MMF: ≥30 dB (PC)
Operating temperature	-40°C to 75°C
Housing color	SMF: Green (APC), Blue (UPC) MMF: Aqua
Standard compliance	SM: GR-326-CORE, TIA 568-3. D, and IEC 61753-1 MM: TIA 568-3. D and IEC 61753-1



QWIK-FUSE CONNECTOR KITS						
Material ID	Description	Connector	Fiber	Cable	Housing color	Package
760242874	MFC-LCF-09-5Y-12-PACK	LC	OM3/4/5	0.25/0.9 mm	Aqua	12/pack
760243371	MFC-LCF-20-5Y-12-PACK	LC	OM3/4/5	1.6/2.0 mm	Aqua	12/pack
760243372	SFC-LCF-09-8Y-12-PACK	LC-UPC	OS2	0.25/0.9 mm	Blue	12/pack
760243388	SFC-LCF-20-8Y-12-PACK	LC-UPC	OS2	1.6/2.0 mm	Blue	12/pack
760243389	SFC-LCAF-09-8Y-12-PACK	LC-APC	OS2	0.25/0.9 mm	Green	12/pack
760243390	SFC-LCAF-20-8Y-12-PACK	LC-APC	OS2	1.6/2.0 mm	Green	12/pack
760243391	MFC-SCF-09-5Y-12-PACK	SC	OM3/4/5	0.25/0.9 mm	Aqua	12/pack
760243392	MFC-SCF-20-5Y-12-PACK	SC	OM3/4/5	1.6/2.0 mm	Aqua	12/pack
760243393	MFC-SCF-30-5Y-12-PACK	SC	OM3/4/5	3.0 mm	Aqua	12/pack
760243394	SFC-SCF-09-8Y-12-PACK	SC-UPC	OS2	0.25/0.9 mm	Blue	12/pack
760243395	SFC-SCF-20-8Y-12-PACK	SC-UPC	OS2	1.6/2.0 mm	Blue	12/pack
760243396	SFC-SCF-30-8Y-12-PACK	SC-UPC	OS2	3.0 mm	Blue	12/pack
760243397	SFC-SCAF-09-8Y-12-PACK	SC-APC	OS2	0.25/0.9 mm	Green	12/pack
760243398	SFC-SCAF-20-8Y-12-PACK	SC-APC	OS2	1.6/2.0 mm	Green	12/pack
760243399	SFC-SCAF-30-8Y-12-PACK	SC-APC	OS2	3.0 mm	Green	12/pack

QWIK-Fuse tool kits

CommScope QWIK-Fuse connector tool kits include the core components for fast, reliable and repeatable connector terminations.

The QWIK-Fuse termination tool kit includes all necessary tools and supplies for cable preparation and termination.

The QWIK-Fuse installer tool kit includes everything in the termination tool kit, plus an installer purpose-built splicer and fiber holders for terminating QWIK-Fuse connectors with other splicers are also available from CommScope.

Qwik-Fuse single fiber connector tool kits

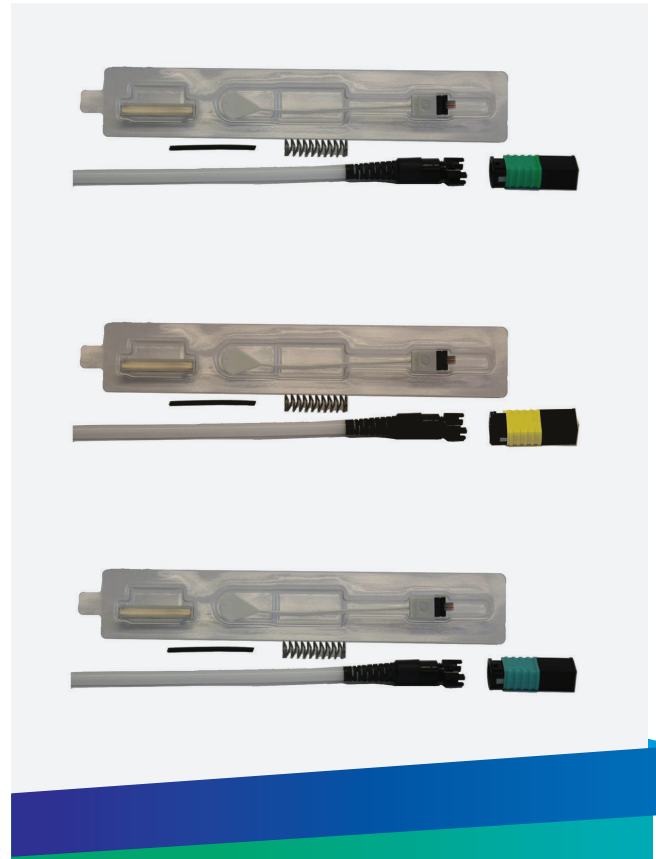
Component	Qwik-Fuse Termination Kit (760243402)	Qwik-Fuse Installer Kit (760243403)
Case	✓	✓
Qwik-Fuse Installer		✓
Installer power supply		✓
Installer spare electrodes		✓
Fiber holder, tight buffer		✓
Fiber holder, loose buffer		✓
Cord prep tool	✓	✓
High-precision cleaver	✓	✓
Fiber stripper, 3-hole	✓	✓
Cutter, Kevlar	✓	✓
Marker, Sharpie	✓	✓
Fiber prep fluid	✓	✓
Fiber wipes	✓	✓
Termination instruction	✓	✓



QWIK-FUSE TOOL KITS AND ACCESSORIES	
Material ID	Description
760243402	Qwik-Fuse Termination Tool Kit, LC, SC (for splice-on connector termination)
760243403	Qwik-Fuse Installer Tool Kit, LC, SC, with Qwik-Fuse Installer and termination tools
760244684	Qwik-Fuse cord tool, 1.6, 2.0, 3.0 mm
760243576	Qwik-Fuse Installer
760243617	Qwik-Fuse fiber holder, tight buffer and cordage (for use with Qwik-Fuse Installer and many AFL and Sumitomo splicers)
760244521	Qwik-Fuse fiber holder, loose buffer and 250µm fiber (for use with Qwik-Fuse Installer and many AFL and Sumitomo splicers)
760244706	Qwik-Fuse fiber holder, Fitel, set
760245135	Qwik-Fuse connector duplex clip, LC, 10 per pack
760245136	Qwik-Fuse connector duplex clip, SC, 10 per pack
760245969	Qwik-Fuse metal ferrule holder

QWIK MPO connectors and tool kit

QWIK-Fuse MPO connectors are mass-fusion-splicing solutions that speed the repair, restoration, and upgrade of multi-fiber cable assemblies. They are a perfect alternative when factory-terminated MPO solutions cannot be used, such as when high-fiber-count cables must be fed through tight conduits or when slack storage of a multi-fiber breakout is not possible. The ferrule holder, required for terminations, comes with the QWIK-Fuse MPO termination kit and is also available separately.



Fiber	SMF (OS2) MMF (OM3/4/5)
Fiber counts	8, 12
Cable construction/diameter	3.0 mm round, ribbon–no jacket, ribbon with jacket
Polish	APC, PC
Insertion loss	SMF: ≤ 0.75 dB (Standard loss) ≤ 0.35 dB (Low loss) MMF: ≤ 0.35 dB
Return loss	SMF: ≥ 60 dB (APC) MMF: ≥ 20 dB (PC)
Operating temperature	-40°C to 75°C
Housing color	SMF: Yellow (Low loss) Green (Standard loss) MMF: Aqua (OM3/4/5)
Standard compliance	TIA 568-3. D

QWIK-FUSE MPO CONNECTOR KITS

Material ID	Description	Connector	Fiber	Cable	Housing color	Performance	Package
760251300	MFC-12MX-5SP-30-AQ, QWIK MPO, PINNED	MPO-PC Pinned	OM3/4/5	12f round, 3.0 mm	Aqua	Standard Loss	Single
760251299	MFC-12MP-5SP-30-AQ, QWIK MPO, UNPINNED	MPO-PC Unpinned	OM3/4/5	12f round, 3.0 mm	Aqua	Standard Loss	Single
760251294	MFC-12MX-5SP-RN-AQ, QWIK MPO, PINNED	MPO-PC Pinned	OM3/4/5	12 f ribbon, no jacket	Aqua	Standard Loss	Single
760251293	MFC-12MP-5SP-RN-AQ, QWIK MPO, UNPINNED	MPO-PC Unpinned	OM3/4/5	12 f ribbon, no jacket	Aqua	Standard Loss	Single
760251292	MFC-12MX-5SP-RC-AQ, QWIK MPO, PINNED	MPO-PC Pinned	OM3/4/5	12 f ribbon, with jacket	Aqua	Standard Loss	Single
760251291	MFC-12MP-5SP-RC-AQ, QWIK MPO, UNPINNED	MPO-PC Unpinned	OM3/4/5	12 f ribbon, with jacket	Aqua	Standard Loss	Single
760248909	MFC-8MX-5SP-30-AQ, MPO-PC, PINNED	MPO-PC Pinned	OM3/4/5	8f round, 3.0 mm	Aqua	Standard Loss	Single
760248910	MFC-8MP-5SP-30-AQ, MPO-PC, UNPINNED	MPO-PC Unpinned	OM3/4/5	8f round, 3.0 mm	Aqua	Standard Loss	Single
760248915	MFC-8MX-5SP-RN-AQ, MPO-PC, PINNED	MPO-PC Pinned	OM3/4/5	8f ribbon, no jacket	Aqua	Standard Loss	Single
760248916	MFC-8MP-5SP-RN-AQ, MPO-PC, UNPINNED	MPO-PC Unpinned	OM3/4/5	8f ribbon, no jacket	Aqua	Standard Loss	Single

QWIK-Fuse MPO Connector Kits

QWIK-FUSE MPO CONNECTOR KITS (CONTINUED)							
Material ID	Description	Connector	Fiber	Cable	Housing color	Performance	Package
760248917	MFC-8MX-5SP-RC-AQ, MPO-PC, PINNED	MPO-PC Pinned	OM3/4/5	8f ribbon, with jacket	Aqua	Standard Loss	Single
760248918	MFC-8MP-5SP-RC-AQ, MPO-PC, UNPINNED	MPO-PC Unpinned	OM3/4/5	8f ribbon, with jacket	Aqua	Standard Loss	Single
760251302	SFC-12MX-8SP-30-GR,QWIK MPO/ APC,PINNED	MPO-APC Pinned	OS2	12f round, 3.0 mm	Green	Standard Loss	Single
760251301	SFC-12MP-8SP-30-GR,QWIK MPO/ APC,UNPINNED	MPO-APC Unpinned	OS2	12f round, 3.0 mm	Green	Standard Loss	Single
760251298	SFC-12MX-8SP-RN-GR,QWIK MPO/ APC,PINNED	MPO-APC Pinned	OS2	12 f ribbon, no jacket	Green	Standard Loss	Single
760251297	SFC-12MP-8SP-RN-GR,QWIK MPO/ APC,UNPINNED	MPO-APC Unpinned	OS2	12 f ribbon, no jacket	Green	Standard Loss	Single
760251296	SFC-12MX-8SP-RC-GR,QWIK MPO/ APC,PINNED	MPO-APC Pinned	OS2	12 f ribbon, with jacket	Green	Standard Loss	Single
760251295	SFC-12MP-8SP-RC-GR,QWIK MPO/ APC,UNPINNED	MPO-APC Unpinned	OS2	12 f ribbon, with jacket	Green	Standard Loss	Single
760249953	SFC-12MP-8LL-30-YL, MPO-APC, UNPINNED	MPO-APC Unpinned	OS2	12f round, 3.0 mm	Yellow	Low Loss	Single
760249954	SFC-12MP-8LL-RN-YL, MPO-APC, UNPINNED	MPO-APC Unpinned	OS2	12 f ribbon, no jacket	Yellow	Low Loss	Single
760249955	SFC-12MP-8LL-RC-YL, MPO-APC, UNPINNED	MPO-APC Unpinned	OS2	12 f ribbon, with jacket	Yellow	Low Loss	Single
760249956	SFC-12MX-8LL-30-YL, MPO-APC, PINNED	MPO-APC Pinned	OS2	12f round, 3.0 mm	Yellow	Low Loss	Single
760249957	SFC-12MX-8LL-RN-YL, MPO-APC, PINNED	MPO-APC Pinned	OS2	12 f ribbon, no jacket	Yellow	Low Loss	Single
760249958	SFC-12MX-8LL-RC-YL, MPO-APC, PINNED	MPO-APC Pinned	OS2	12 f ribbon, with jacket	Yellow	Low Loss	Single

QWIK-FUSE MPO TOOL KITS AND ACCESSORIES

Material ID	Description
760188698	Qwik MPO connector termination tool kit (Includes: Assembly platform, ferrule holder, jacket stripper/splitting tool, ribbonizing tool, ribbonizing glue, magnifier, marker, instructions, and soft case)

Method A MPO Trunk and Patch Cords



METHOD A MPO-12 TRUNK CABLES

1	2	3	4	5	6	7	8	9	10	11	12	13	14-16	
A	J	X	M	X	M	X	A	K	-	M	A	F	010	
Construction type A Method A	Family G Trunk, Plenum J Trunk, LSZH/ Riser	Fiber type G Singlemode (A2) X OM4 multimode	Termination end A MP MPO (female) MX MPO (male)		Termination end B MP MPO (female) MX MPO (male)		Construction A 12 Fiber PmP	Fiber count D 12-fiber F 24-fiber H 48-fiber K 72-fiber L 96-fiber M 144-fiber			Color M Aqua J Yellow	Options A No gland B With gland C With pulling eye	Unit of measure F Feet M Meter	Length 010-999 Feet 003-999 Meter
			- Male to female will be configured as trunk extensions								- OM4 standard is aqua - Singlemode standard is yellow			

METHOD A MPO-24 TRUNK CABLES

1	2	3	4	5	6	7	8	9	10	11	12	13	14-16	
A	G	X	2	X	2	X	B	M	-	M	C	F	010	
Construction type A Method A	Family G Trunk, Plenum J Trunk, LSZH/ Riser	Fiber type X OM4 multimode	Termination end A 2P MPO (female) 2X MPO (male)		Termination end B 2P MPO (female) 2X MPO (male)		Construction B 24-fiber PmP	Fiber count F 24-fiber H 48-fiber K 72-fiber L 96-fiber M 144-fiber			Color M Aqua	Options A No gland B With gland C With pulling eye	Unit of measure F Feet M Meter	Length 001-999 Feet 001-305 Meter
			- Male to female will be configured as trunk extensions								- OM4 standard is aqua			

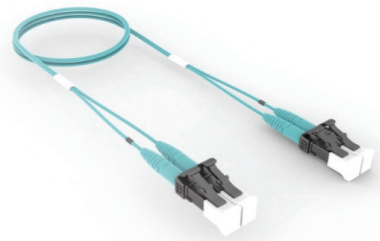
METHOD A MPO-12 PATCH CORDS

1	2	3	4	5	6	7	8	9	10	11	12	13	14-16
A	Q	G	M	X	M	X	G	D	-	J	A	F	010
Construction type A Method A	Cable family Q Plenum array R LSZH array	Fiber type G Singlemode (A2) X OM4 multimode	Connector 1 MP 12f MPO (female) MX 12f MPO (male)		Connector 2 MP 12f MPO (female) MX 12f MPO (male) UC Unconnected		Cordage size G 12-fiber PmP Array Cord	Fiber count D 12-fiber	Color M Aqua J Yellow		Breakout length A No gland	UOM F Feet M Meter	Length 002-999 ft 001-305 m

METHOD A MPO-24 PATCH CORDS

1	2	3	4	5	6	7	8	9	10	11	12	13	14-16
A	Q	X	2	X	2	X	H	F	-	M	A	F	010
Construction type A Method A	Cable family Q Plenum array R LSZH array	Fiber type X OM4 multimode	Connector 1 2P 24f MPO (female) 2X 24f MPO (male)		Connector 2 2P 24f MPO (female) 2X 24f MPO (male) UC Unconnected		Cordage size H 24-fiber PmP Array Cord	Fiber count F 24-fiber	Color M Aqua		Breakout length A No gland	UOM F Feet M Meter	Length 002-999 ft 001-305 m

Fiber Patch Cords



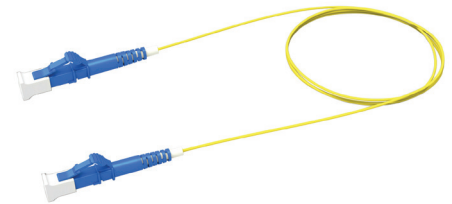
LOW-LOSS (LL) FIBER PATCH CORDS

- Duplex zipcord construction provides better mechanical performance with less risk of damage from crimping
- Rugged 1.6 mm cordage improves reliability and handling
- Outer jacket colored for easy identification

1 F	2 D	3 X	4 L	5 C	6 L	7 C	8 4	9 2	10 -	11 M	12 X	13 F	14-16 010
Prefix FD Jumper-Plenum FF Jumper-LSZH/Riser	Fiber Type X OM4 W Single-mode (A1)	Connector 1 LC LC Standard SC SC Standard LA LC Angled SA SC Angled	Connector 2 LC LC Standard SC SC Standard LA LC Angled SA SC Angled	Cordage Size 2 1.6mm Simplex 4 1.6mm Zipcord	Fiber Count 1 1 Fiber 2 2 Fiber	Jacket Color M Aqua J Yellow	Breakout Length X No Breakout	UOM F Feet M Meter	Breakout Length X No Breakout	Length 1-999 Feet 1-999 Meters			

· OM4 standard is aqua

· Singlemode standard is yellow



ULTRA-LOW LOSS (ULL) FIBER LC PATCH CORDS

- Duplex zipcord construction increases mechanical performance and reduces risk of damage from crimping
- Rugged 1.6 mm cordage improves reliability and handling
- Outer jacket colored for easy identification

1 U	2 D	3 X	4 L	5 C	6 L	7 C	8 4	9 2	10 -	11 M	12 X	13 F	14-16 010
Construction type U Ultra-low loss	Cable family D Plenum F LSZH/Riser	Fiber type G Singlemode (A2) X OM4 V OM5	Connector 1 LC Standard	Connector 2 LC LC Standard UC Unconnectorized	Cordage size 2 1.6mm simplex 4 1.6mm zipcord	Fiber count 1 1-fiber 2 2-fiber	Color M Aqua N Lime green J Yellow	Breakout length X No breakout	UOM F Feet M Meter	Length 1-999 Feet 1-999 Meters			

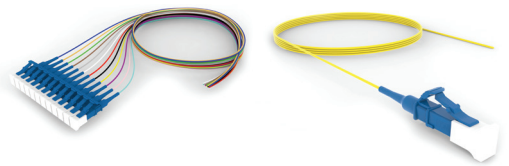
· OM4 standard is aqua

· OM5 standard is lime green

· Singlemode standard is yellow

· Other lengths available please contact CommScope

Fiber Pigtails



900µm PIGTAIL (SINGLE FIBER)

Fiber	Buffer	Performance	Fiber Count	LC	SC
SM A1 UPC	Tight	LL	1	FAWLCUC01-JXF003	FAWSCUC01-JXF003
SM A1 APC	Tight	LL	1	FAWLAUC01-JXF003	FAWSAUC01-JXF003
OM4	Tight	LL	1	FAXLCUC01-MXF003	FAXSCUC01-MXF003
OM4	Tight	ULL	1	UAXLCUC01-MXF003	UAXSCUC01-MXF003
OM5	Tight	ULL	1	UAVLCUC01-NXF003	-
SM A1 UPC	Tight	ULL	1	UAWLCUC01-JXF003	-

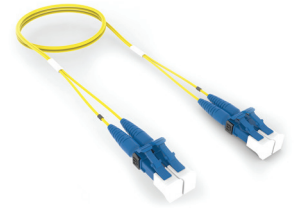
900µm PIGTAIL KIT (12 COLOR)

Fiber	Buffer	Performance	Fiber Count	LC	SC
SM A1	Tight	LL	12	FAWLCUC0C-XXF003	FAWSCUC0C-XXF003
SM A1/APC	Tight	LL	12	FAWLAUC0C-XXF003	FAWSAUC0C-XXF003
OM4	Tight	LL	12	FAXLCUC0C-XXF003	FAXSCUC0C-XXF003
OM4	Tight	ULL	12	UAXLCUC0C-XXF003	-
OM5	Tight	ULL	12	UAVLCUC0C-XXF003	-
SM A1 UPC	Tight	ULL	12	UAWLCUC0C-XXF003	-

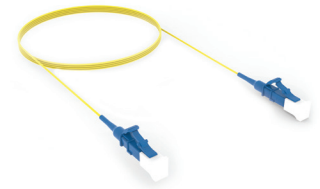
900µm PIGTAIL (SINGLE FIBER) WITH KEVLAR

Fiber	Buffer	Performance	Fiber Count	LC	SC
SM A1 UPC	Semi-Tight	LL	1	FBWLCUC11-JXF003	FBWSCUC11-JXF003
SM A1 APC	Semi-Tight	LL	1	FBWLAUC11-JXF003	FBWSAUC11-JXF003
OM4	Semi-Tight	LL	1	FBXLCUC11-MXF003	FBXSCUC11-MXF003
OM4	Semi-Tight	ULL	1	UBXLCUC11-MXF003	UBXSCUC11-MXF003
OM5	Semi-Tight	ULL	1	UBVLCUC11-NXF003	-
SM A1 UPC	Semi-Tight	ULL	1	UBWLCUC11-JXF003	-

APAC Local Fiber Patch Cords and Pigtails



PATCH CORDS							
Fiber	Jacket	Cable OD	Performance	Fiber Count	LC-LC Duplex	LC-SC Duplex	SC-SC Duplex
OM4	LSZH&OFNR	LL	1.8mm	2	Y-2105061-X	Y-2105067-X	Y-2105093-X
OM3	LSZH&OFNR	LL	1.8mm	2	Y-2105027-X	-	-
SM A2	LSZH&OFNR	LL	1.8mm	2	Y-2105028-X	Y-2105032-X	Y-2105092-X
OM4	LSZH&OFNR	LL+	1.8mm	2	Y-2160046-X	-	-
OM3	LSZH&OFNR	LL+	1.8mm	2	Y-1920743-X	Y-2055109-X	Y-2055108-X

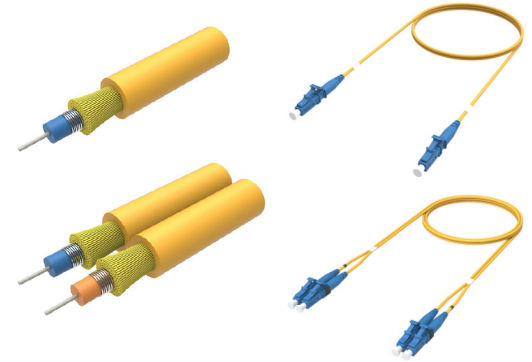


900µm PIGTAILS					
Fiber	Buffer	Performance	Fiber Count	LC	SC
SM G.657A1	Tight	LL	1	2105081-X	2105082-X
OM3	Tight	LL	1	2105083-X	2105085-X
OM4	Tight	LL	1	2105084-X	2105086-X

APAC Local Fiber Patch Cords and Pigtails

CAF 3.0 MM ARMORED FIBER PATCH CORDS

- Optical performance
 - Multimode Max IL: 0.30 dB
 - Singlemode Max IL: 0.25 dB
- Tensile strength
 - 1-fiber cable: ≤200N (short term), ≤100N (long term)
 - 2-fiber cable: ≤400N (short term), ≤200N (long term)
- Armor type
 - Stainless steel 204
- Crush resistance
 - ≤4000N/100 mm (short term), ≤2000N (long term)



Fiber Type	Jacket	OD	Connector	1F	2F
G.657.A2	LSZH	3.0mm	LC/UPC to LC/UPC	CAF-LCLC-LS0MxxxM	CAF-LCLC-LS0NxxxM
G.657.A2	LSZH	3.0mm	LC/APC to LC/APC	CAF-7C7C-LS0MxxxM	CAF-7C7C-LS0NxxxM
G.657.A2	LSZH	3.0mm	SC/UPC to SC/UPC	CAF-SCSC-LS0MxxxM	CAF-SCSC-LS0NxxxM
G.657.A2	LSZH	3.0mm	SC/APC to SC/APC	CAF-6C6C-LS0MxxxM	CAF-6C6C-LS0NxxxM
OM4	LSZH	3.0mm	LC/UPC to LC/UPC		CAF-LCLC-L40NxxxM
OM4	LSZH	3.0mm	SC/UPC to SC/UPC		CAF-SCSC-L40NxxxM

Rack and Cabinet



COMMSCOPE OPEN RACK - ASEAN			
MATERIAL ID	PRODUCT NUMBER	DESCRIPTION	HEIGHT
760082495	RK6-45A	Equipment Rack, 2-Post, 6 in (152 mm) Channel x 7 ft (2134 mm) H - 19 in (482.6 mm) Alu (45U) 12-24 Tapped Rails, Black	45U

COMMSCOPE WALL MOUNT RACK				
MATERIAL ID	DESCRIPTION	HEIGHT	WIDTH X DEPTH	DOOR
1427517-1	CommScope Wall Rack 600X500, 6U, Acrylic Door	6U	600 x 500	Acrylic
1427517-2	CommScope Wall Rack 600X500, 6U, Curve Perforate Door	6U	600 x 500	Curve Perforate
1427520-1	CommScope Wall Rack 600X650, 6U, Acrylic Door	6U	600 x 650	Acrylic
1427520-2	CommScope Wall Rack 600X650, 6U, Curve Perforate Door	6U	600 x 650	Curve Perforate
1427518-1	CommScope Wall Rack 600X500, 9U, Acrylic Door	9U	600 x 500	Acrylic
1427518-2	CommScope Wall Rack 600X500, 9U, Curve Perforate Door	9U	600 x 500	Curve Perforate
1427521-1	CommScope Wall Rack 600X650, 9U, Acrylic Door	9U	600 x 650	Acrylic
1427521-2	CommScope Wall Rack 600X650, 9U, Curve Perforate Door	9U	600 x 650	Curve Perforate
1427519-2	CommScope Wall Rack 600X500, 12U, Curve Perforate Door	12U	600 x 500	Curve Perforate
1427522-1	CommScope Wall Rack 600X650, 12U, Acrylic Door	12U	600 x 650	Acrylic
1427522-2	CommScope Wall Rack 600X650, 12U, Curve Perforate Door	12U	600 x 650	Curve Perforate

Rack and Cabinet

COMMSCOPE RACK ACCESSORIES - SHELVES		
MATERIAL ID	DESCRIPTION	DEPTH
1427510-1	CommScope Fix shelf, for 600 Series, 450 mm	450
1427510-2	CommScope Fix shelf heavy duty, for 600 Series, 450 mm	450
1427510-3	CommScope Fix shelf, for 800 Series, 600 mm	600
1427510-4	CommScope Fix shelf heavy duty, for 800 Series, 600 mm	600
1427510-5	CommScope Fix shelf, for 1100 Series, 800 mm	800
1427510-6	CommScope Fix shelf heavy duty, for 1100 Series, 800 mm	800

COMMSCOPE RACK ACCESSORIES - FANS		
MATERIAL ID	DESCRIPTION	SIZE
1427508-1	CommScope Ventilating fan set 2x4"	2x4
1427508-2	CommScope Ventilating fan set 3x4"	3x4

COMMSCOPE RACK ACCESSORIES - AC POWER DISTRIBUTION UNITS		
MATERIAL ID	DESCRIPTION	OUTLET
1427507-1	CommScope AC Power Distribution Unit, 6 outlet (Std)	6
1427507-2	CommScope AC Power Distribution Unit, 12 outlet(Std)	12
1-1427507-1	CommScope AC Power Distribution Unit, 6 outlet power plug	6
1-1427507-2	CommScope AC Power Distribution Unit, 12 outlet power plug	12

CommScope pushes the boundaries of communications technology with game-changing ideas and ground-breaking discoveries that spark profound human achievement.

We collaborate with our customers and partners to design, create and build the world's most advanced networks. It is our passion and commitment to identify the next opportunity and realize a better tomorrow. Discover more at commscope.com

COMMSCOPE®

commscope.com

Visit our website or contact your local CommScope representative for more information.

© 2024 CommScope, LLC. All rights reserved.

CommScope and the CommScope logo are registered trademarks of CommScope and/or its affiliates in the U.S. and other countries. For additional trademark information, see <https://www.commscope.com/trademarks>. All product names, trademarks and registered trademarks are property of their respective owners.

CO-11219118-EN (08/24)