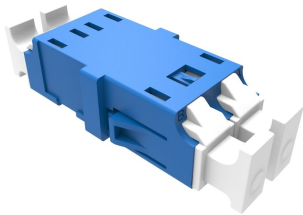


# CP7688-000 | OC-ADP-L1-L1-NFCD-(24)



Fiber Optic Duplex Adapter, Singlemode LC/UPC, blue, flangeless, 24 pcs

- High quality zirconia ceramic split sleeves ensuring high precision alignment, reliability and improved reconnect ability
- Translucent easy grip dust cap and integrated mounting clips
- High quality one piece housing, no ultrasonic welding

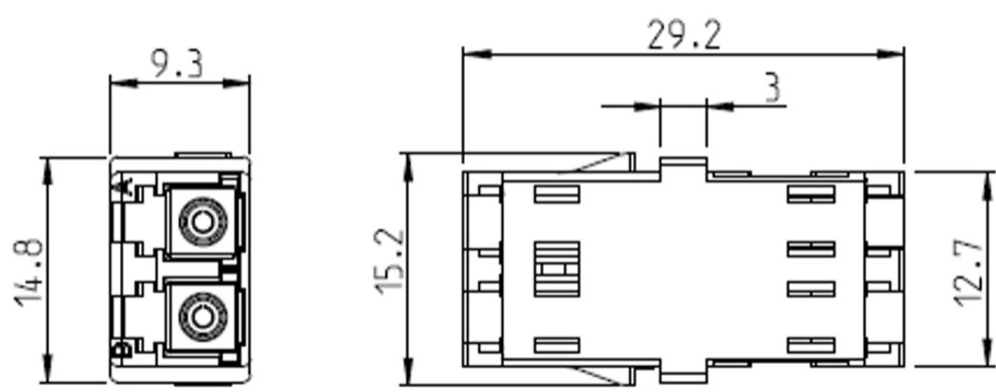
## Product Classification

Regional Availability	Asia   Australia/New Zealand   EMEA   Latin America   North America
Product Type	Fiber adapter
Product Series	OC-ADP

## General Specifications

Body Style	Duplex
Color	Blue
Interface	LC/UPC
Mounting	Square flange
Total Ports, quantity	2
Transmission Standards	IEC 60754-1   IEC 61300-3-42

## Outline Drawing



Material Specifications

**Alignment Sleeve Material**      Ceramic

Mechanical Specifications

**Coupling Retention Force**      70 N | 15.737 lbf

Optical Specifications

**Fiber Mode**      Singlemode

**Insertion Loss, maximum**      0.1 dB

Environmental Specifications

**Operating Temperature**      -40 °C to +70 °C (-40 °F to +158 °F)

Packaging and Weights

**Packaging quantity**      24

**Packaging Type**      Bag

Regulatory Compliance/Certifications

Agency	Classification
CHINA-ROHS	Below maximum concentration value
REACH-SVHC	Compliant as per SVHC revision on <a href="https://www.commscope.com/ProductCompliance">www.commscope.com/ProductCompliance</a>
ROHS	Compliant

UK-ROHS

Compliant

