



# The SYSTIMAX® GigaSPEED® XL solution

The Category 6 solution that goes beyond Category 6 standards

COMMScope®

# GigaSPEED® XL: more performance, more flexibility, more uptime



## The Category 6 solution that's in a category all its own

A growing network needs a flexible physical layer to evolve efficiently—and GigaSPEED® XL delivers the performance, agility and intelligence your enterprise network needs.

- Significant performance margin over Category 6 channel standards
- Design flexibility
  - Horizontal cables as short as three meters
  - Patch cords as short as one meter with guaranteed headroom (shorter lengths also supported)
  - Up to six connectors in a channel
- Intelligent and intelligent-ready imVision® support for physical layer traceability
- Simpler installations with field-terminated and preterminated options

Combine this flexibility with performance that significantly exceeds both Category 6 and ISO/IEC Class E specifications, and you have the complete solution to an easier, more dependable and more cost-effective network infrastructure.

SYSTIMAX® doesn't just meet the standards—it exceeds them, even before they're published

GigaSPEED XL is part of the SYSTIMAX® portfolio that's always been ahead of the curve—and ahead of the standards.

How far ahead? When introduced, GigaSPEED XL exceeded Category 6 standards—five years before they were even published.



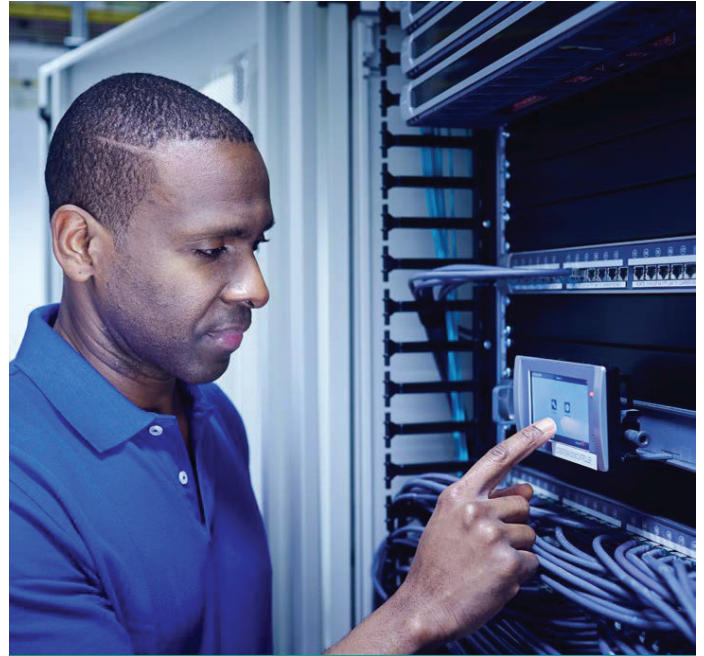
## The GigaSPEED XL difference

- Supports all long channel and short channel configurations
- Supports up to six connectors in a channel
- Available as InstaPatch® Cu preterminated solution
- Intelligent and intelligent-ready options for imVision AIM

# GigaSPEED® XL is built to take advantage of the entire SYSTIMAX portfolio

GigaSPEED XL is designed to deliver cost-effective performance that fully leverages the entire ecosystem of CommScope's end-to-end SYSTIMAX portfolio of solutions, including intelligence-ready iPatch® and imVision solutions that improve the transparency and efficiency of your data center or enterprise network.

- GigaSPEED XL x71 cables
  - Smooth, flexible construction for easier termination procedures
  - Available in plenum, nonplenum and LSZH ratings
- GigaSPEED XL GS8E patch cords
  - Anti-snag plugs for easy connections and disconnections
- SYSTIMAX 360 1100GS3 patch panels
  - 24- and 48-port configurations, straight and angled
  - PatchMAX enables front-side termination
  - Intelligence-ready or intelligent options
- MGS400 jacks and panels
  - Simple termination procedure
  - “M-series opening” in faceplates enables media flexibility
  - Several modular panel options accommodating 24, 36 or 48 ports
- MiNo6 (reduced-diameter patch cord) compatibility
  - 0.15 inch (3.8 millimeter) diameter cords support increased density



## imVision®: The SYSTIMAX advantage

Like all SYSTIMAX infrastructure solutions, GigaSPEED XL can be ordered with imVision, the AIM solution that tracks all network connectivity in real time. imVision finds available ports and rack space, issues intelligent alarms and automatically documents connectivity changes—all in a clear, web-based interface, onsite or remotely.

CommScope (NASDAQ: COMM) helps design, build and manage wired and wireless networks around the world. As a communications infrastructure leader, we shape the always-on networks of tomorrow. For more than 40 years, our global team of greater than 20,000 employees, innovators and technologists has empowered customers in all regions of the world to anticipate what's next and push the boundaries of what's possible. Discover more at [commscope.com](https://commscope.com)

**COMMSCOPE®**

---

[commscope.com](https://commscope.com)

Visit our website or contact your local CommScope representative for more information.

© 2018 CommScope, Inc. All rights reserved.

Unless otherwise noted, all trademarks identified by ® or ™ are registered trademarks, respectively, of CommScope, Inc. This document is for planning purposes only and is not intended to modify or supplement any specifications or warranties relating to CommScope products or services. CommScope is committed to the highest standards of business integrity and environmental sustainability with a number of CommScope's facilities across the globe certified in accordance with international standards, including ISO 9001, TL 9000, and ISO 14001. Further information regarding CommScope's commitment can be found at [www.commscope.com/About-Us/Corporate-Responsibility-and-Sustainability](https://www.commscope.com/About-Us/Corporate-Responsibility-and-Sustainability).

BR-111916.1-EN (02/18)