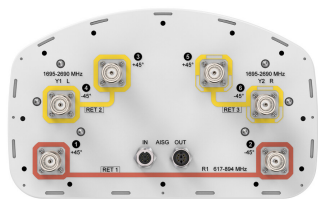


FVV-65B-R3



6-port sector antenna, 2x 617-894 and 4x 1695–2690 MHz, 65° HPBW, 3x RET, 600 MHz-Ready Antenna Technology

General Specifications

| | |
|----------------------------------|--|
| Antenna Type | Sector |
| Band | Multiband |
| Color | Light Gray (RAL 7035) |
| Grounding Type | RF connector inner conductor and body grounded to reflector and mounting bracket |
| Performance Note | Outdoor usage |
| Radome Material | Fiberglass, UV resistant |
| Reflector Material | Aluminum |
| RF Connector Interface | 4.3-10 Female |
| RF Connector Location | Bottom |
| RF Connector Quantity, high band | 4 |
| RF Connector Quantity, mid band | 0 |
| RF Connector Quantity, low band | 2 |
| RF Connector Quantity, total | 6 |

Remote Electrical Tilt (RET) Information

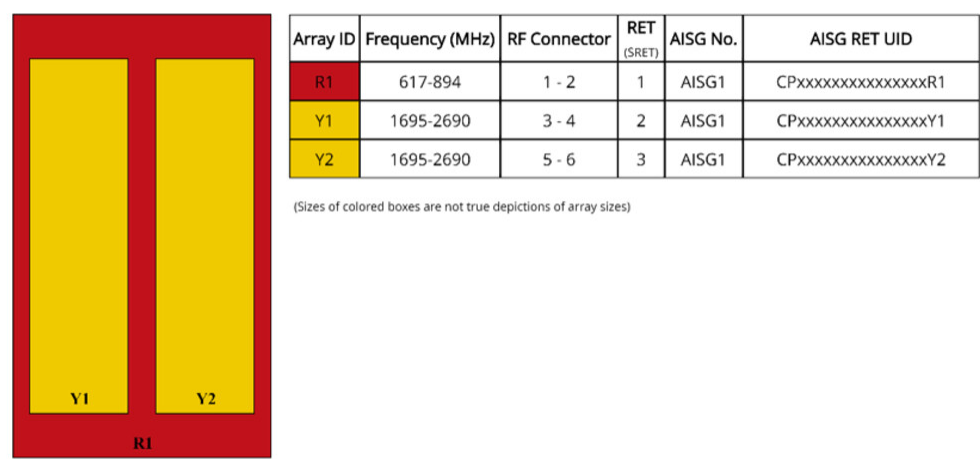
| | |
|--|-----------------------------------|
| RET Hardware | CommRET v2 |
| RET Interface | 8-pin DIN Female 8-pin DIN Male |
| RET Interface, quantity | 1 female 1 male |
| Input Voltage | 10–30 Vdc |
| Internal RET | High band (2) Low band (1) |
| Power Consumption, active state, maximum | 10 W |
| Power Consumption, idle state, maximum | 2 W |
| Protocol | 3GPP/AISG 2.0 |

Dimensions

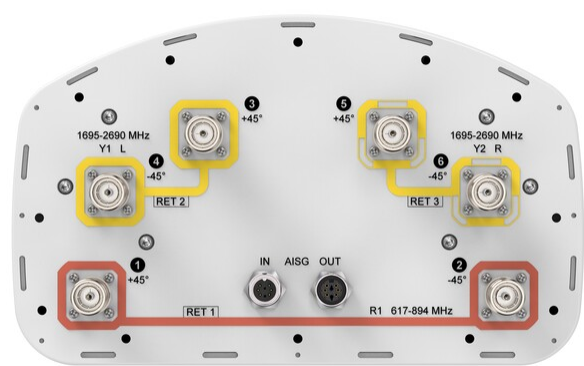
FVV-65B-R3

| | |
|--------------------------|---------------------|
| Width | 300 mm 11.811 in |
| Depth | 181 mm 7.126 in |
| Length | 1828 mm 71.969 in |
| Net Weight, antenna only | 19.6 kg 43.211 lb |

Array Layout



Port Configuration



Electrical Specifications

| | |
|--------------------------|---------------------------------|
| Impedance | 50 ohm |
| Operating Frequency Band | 1695 – 2690 MHz 617 – 894 MHz |
| Polarization | ±45° |

FVV-65B-R3

Total Input Power, maximum 900 W @ 50 °C

Electrical Specifications

| | R1 | R1 | Y1,Y2 | Y1,Y2 | Y1,Y2 | Y1,Y2 | Y1,Y2 |
|--|------------|------------|------------|------------|------------|------------|------------|
| Frequency Band, MHz | 617–698 | 698–894 | 1695–1880 | 1850–1990 | 1920–2200 | 2300–2500 | 2500–2690 |
| RF Port | 1,2 | 1,2 | 3,4,5,6 | 3,4,5,6 | 3,4,5,6 | 3,4,5,6 | 3,4,5,6 |
| Gain, dBi | 14.3 | 14.7 | 17.5 | 18.1 | 18.4 | 18.7 | 18.7 |
| Beamwidth, Horizontal, degrees | 71 | 70 | 66 | 64 | 64 | 63 | 60 |
| Beamwidth, Vertical, degrees | 14.5 | 12.2 | 5.6 | 5.3 | 5 | 4.4 | 4.2 |
| Beam Tilt, degrees | 2–14 | 2–14 | 2–12 | 2–12 | 2–12 | 2–12 | 2–12 |
| USLS (First Lobe), dB | 20 | 19 | 18 | 18 | 19 | 20 | 20 |
| Front-to-Back Ratio at 180°, dB | 25 | 29 | 37 | 35 | 31 | 28 | 32 |
| CPR at Boresight, dB | 16 | 15 | 17 | 18 | 19 | 18 | 16 |
| Isolation, Cross Polarization, dB | 25 | 25 | 25 | 25 | 25 | 25 | 25 |
| Isolation, Inter-band, dB | 28 | 28 | 28 | 28 | 28 | 28 | 28 |
| VSWR Return loss, dB | 1.5 14.0 | 1.5 14.0 | 1.5 14.0 | 1.5 14.0 | 1.5 14.0 | 1.5 14.0 | 1.5 14.0 |
| PIM, 3rd Order, 2 x 20 W, dBc | -150 | -150 | -150 | -150 | -150 | -150 | -150 |
| Input Power per Port at 50°C, maximum, watts | 250 | 250 | 200 | 200 | 200 | 200 | 200 |

Mechanical Specifications

| | |
|--|---|
| Effective Projective Area (EPA), frontal | 0.26 m² 2.799 ft² |
| Effective Projective Area (EPA), lateral | 0.22 m² 2.368 ft² |
| Wind Loading @ Velocity, frontal | 278.0 N @ 150 km/h (62.5 lbf @ 150 km/h) |
| Wind Loading @ Velocity, lateral | 230.0 N @ 150 km/h (51.7 lbf @ 150 km/h) |
| Wind Loading @ Velocity, maximum | 537.0 N @ 150 km/h (120.7 lbf @ 150 km/h) |
| Wind Loading @ Velocity, rear | 282.0 N @ 150 km/h (63.4 lbf @ 150 km/h) |
| Wind Speed, maximum | 241 km/h (150 mph) |

Packaging and Weights

| | |
|----------------|---------------------|
| Width, packed | 380 mm 14.961 in |
| Depth, packed | 295 mm 11.614 in |
| Length, packed | 1956 mm 77.008 in |

FVV-65B-R3

Weight, gross 30.9 kg | 68.123 lb

Regulatory Compliance/Certifications

| Agency | Classification |
|---------------|--|
| CHINA-ROHS | Above maximum concentration value |
| ISO 9001:2015 | Designed, manufactured and/or distributed under this quality management system |
| ROHS | Compliant/Exempted |
| UK-ROHS | Compliant/Exempted |



Included Products

| | | |
|----------|---|--|
| BSAMNT-3 | – | Wide Profile Antenna Downtilt Mounting Kit for 2.4 - 4.5 in (60 - 115 mm) OD round members. Kit contains one scissor top bracket set and one bottom bracket set. |
|----------|---|--|

* Footnotes

| | |
|-------------------------|---|
| Performance Note | Severe environmental conditions may degrade optimum performance |
|-------------------------|---|

BSAMNT-3



Wide Profile Antenna Downtilt Mounting Kit for 2.4 - 4.5 in (60 - 115 mm) OD round members. Kit contains one scissor top bracket set and one bottom bracket set.

Product Classification

Product Type Downtilt mounting kit

General Specifications

Application Outdoor

Color Silver

Dimensions

Compatible Diameter, maximum 115 mm | 4.528 in

Compatible Diameter, minimum 60 mm | 2.362 in

Weight, net 6.2 kg | 13.669 lb

Material Specifications

Material Type Galvanized steel

Packaging and Weights

Included Brackets | Hardware

Packaging quantity 1

Weight, gross 6.4 kg | 14.11 lb

Regulatory Compliance/Certifications

| Agency | Classification |
|---------------|--|
| CE | Compliant with the relevant CE product directives |
| CHINA-ROHS | Below maximum concentration value |
| ISO 9001:2015 | Designed, manufactured and/or distributed under this quality management system |
| REACH-SVHC | Compliant as per SVHC revision on www.andrew.com/ProductCompliance |
| ROHS | Compliant |
| UK-ROHS | Compliant |

