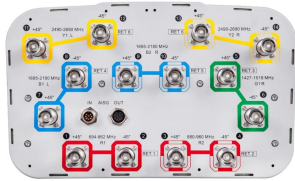


EGYHHTT-65A-R6



14-port, 1.5m, multiband antenna, RF port assignments are as follows: R1 = 694–862, R2 = 880–960, G1 = 1427-1518, B1 & B2 = 1695–2180 and Y1 & Y2 = 2490-2690 MHz, 65° HPBW, 6x RET. Y1 & Y2 share a common RET

- Electrical tilt settings applicable to RF Ports R1, R2, G1, B1 & B2 can be set independently (See Array Layout and RET Table below)
- A common electrical tilt setting is shared by RF Ports Y1 & Y2
- All Internal RET actuators are connected in “Cascaded SRET” configuration

This product will be discontinued on: December 31, 2025

General Specifications

Antenna Type	Sector
Band	Multiband
Grounding Type	RF connector inner conductor and body grounded to reflector and mounting bracket
Performance Note	Outdoor usage
RF Connector Interface	4.3-10 Female
RF Connector Location	Bottom
RF Connector Quantity, high band	0
RF Connector Quantity, mid band	10
RF Connector Quantity, low band	4
RF Connector Quantity, total	14

Remote Electrical Tilt (RET) Information

RET Hardware	CommRET v2
RET Interface	8-pin DIN Female 8-pin DIN Male
RET Interface, quantity	1 female 1 male
Input Voltage	10–30 Vdc
Internal RET	Low band (2) Mid band (4)
Power Consumption, active state, maximum	8 W
Power Consumption, idle state, maximum	1 W

EGYHHTT-65A-R6

Protocol

3GPP/AISG 2.0 (Single RET)

Dimensions

Width

350 mm | 13.78 in

Depth

208 mm | 8.189 in

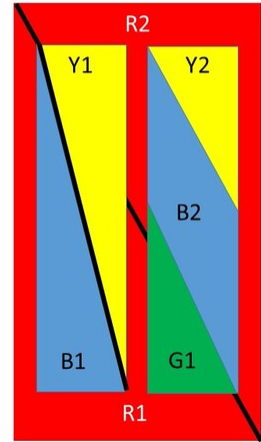
Length

1499 mm | 59.016 in

Net Weight, antenna only

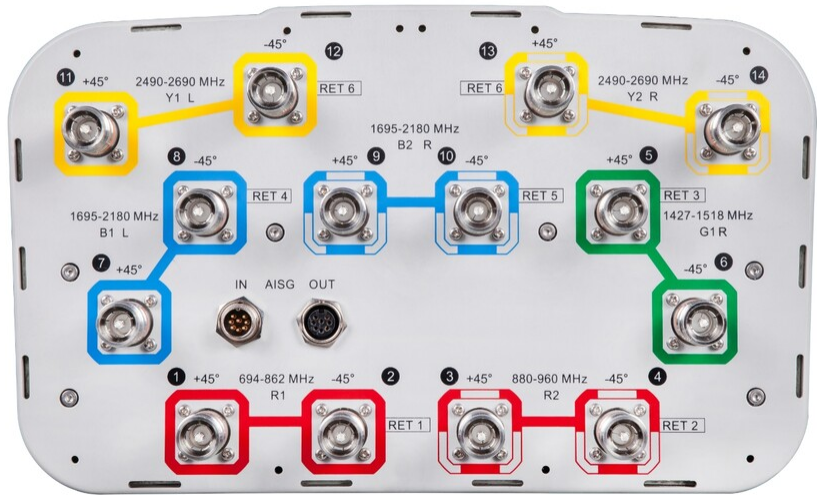
28.8 kg | 63.493 lb

Array Layout

	Array	Freq (MHz)	Conns	RET (SRET)	AISG RET UID
	R1	694-862	1-2	1	CPxxxxxxxxxxxxxxxxR1
	R2	880-960	3-4	2	CPxxxxxxxxxxxxxxxxR2
	G1	1427-1518	5-6	3	CPxxxxxxxxxxxxxxxxG1
	B1	1695-2180	7-8	4	CPxxxxxxxxxxxxxxxxB1
	B2	1695-2180	9-10	5	CPxxxxxxxxxxxxxxxxB2
	Y1	2490-2690	11-12	6	CPxxxxxxxxxxxxxxxxY1
	Y2	2490-2690	13-14		

Port Configuration

EGYHHTT-65A-R6



Electrical Specifications

Impedance	50 ohm
Operating Frequency Band	1427 – 1518 MHz 1695 – 2180 MHz 2490 – 2690 MHz 694 – 862 MHz 880 – 960 MHz
Polarization	±45°
Total Input Power, maximum	800 W @ 50 °C

Mechanical Specifications

Wind Loading @ Velocity, frontal	239.0 N @ 150 km/h (53.7 lbf @ 150 km/h)
Wind Loading @ Velocity, lateral	201.0 N @ 150 km/h (45.2 lbf @ 150 km/h)
Wind Loading @ Velocity, maximum	507.0 N @ 150 km/h (114.0 lbf @ 150 km/h)
Wind Loading @ Velocity, rear	254.0 N @ 150 km/h (57.1 lbf @ 150 km/h)
Wind Speed, maximum	241 km/h (150 mph)

Packaging and Weights

Width, packed	456 mm 17.953 in
Depth, packed	357 mm 14.055 in
Length, packed	1643 mm 64.685 in
Weight, gross	38.2 kg 84.216 lb

EGYHHTT-65A-R6

Regulatory Compliance/Certifications

Agency	Classification
CE	Compliant with the relevant CE product directives
CHINA-ROHS	Above maximum concentration value
ISO 9001:2015	Designed, manufactured and/or distributed under this quality management system
ROHS	Compliant/Exempted
UK-ROHS	Compliant/Exempted



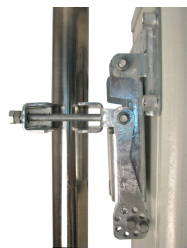
Included Products

BSAMNT-3	–	Wide Profile Antenna Downtilt Mounting Kit for 2.4 - 4.5 in (60 - 115 mm) OD round members. Kit contains one scissor top bracket set and one bottom bracket set.
----------	---	--

* Footnotes

Performance Note	Severe environmental conditions may degrade optimum performance
------------------	---

BSAMNT-3



Wide Profile Antenna Downtilt Mounting Kit for 2.4 - 4.5 in (60 - 115 mm) OD round members. Kit contains one scissor top bracket set and one bottom bracket set.

Product Classification

Product Type Downtilt mounting kit

General Specifications

Application Outdoor

Color Silver

Dimensions

Compatible Diameter, maximum 115 mm | 4.528 in

Compatible Diameter, minimum 60 mm | 2.362 in

Weight, net 6.2 kg | 13.669 lb

Material Specifications

Material Type Galvanized steel

Packaging and Weights

Included Brackets | Hardware

Packaging quantity 1

Weight, gross 6.4 kg | 14.11 lb

Regulatory Compliance/Certifications

Agency	Classification
CE	Compliant with the relevant CE product directives
CHINA-ROHS	Below maximum concentration value
ISO 9001:2015	Designed, manufactured and/or distributed under this quality management system
REACH-SVHC	Compliant as per SVHC revision on www.andrew.com/ProductCompliance
ROHS	Compliant
UK-ROHS	Compliant

