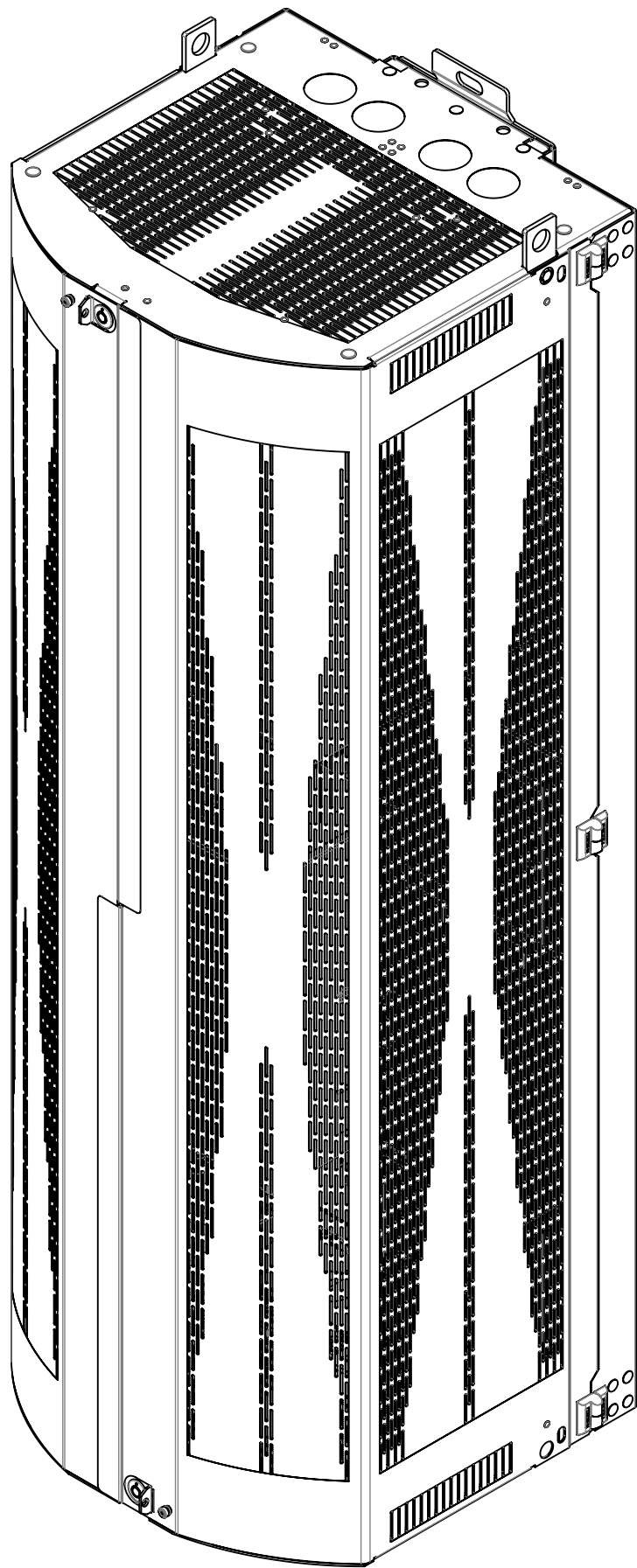


860252485-E001-INSTALL INSTALLATION INSTRUCTION

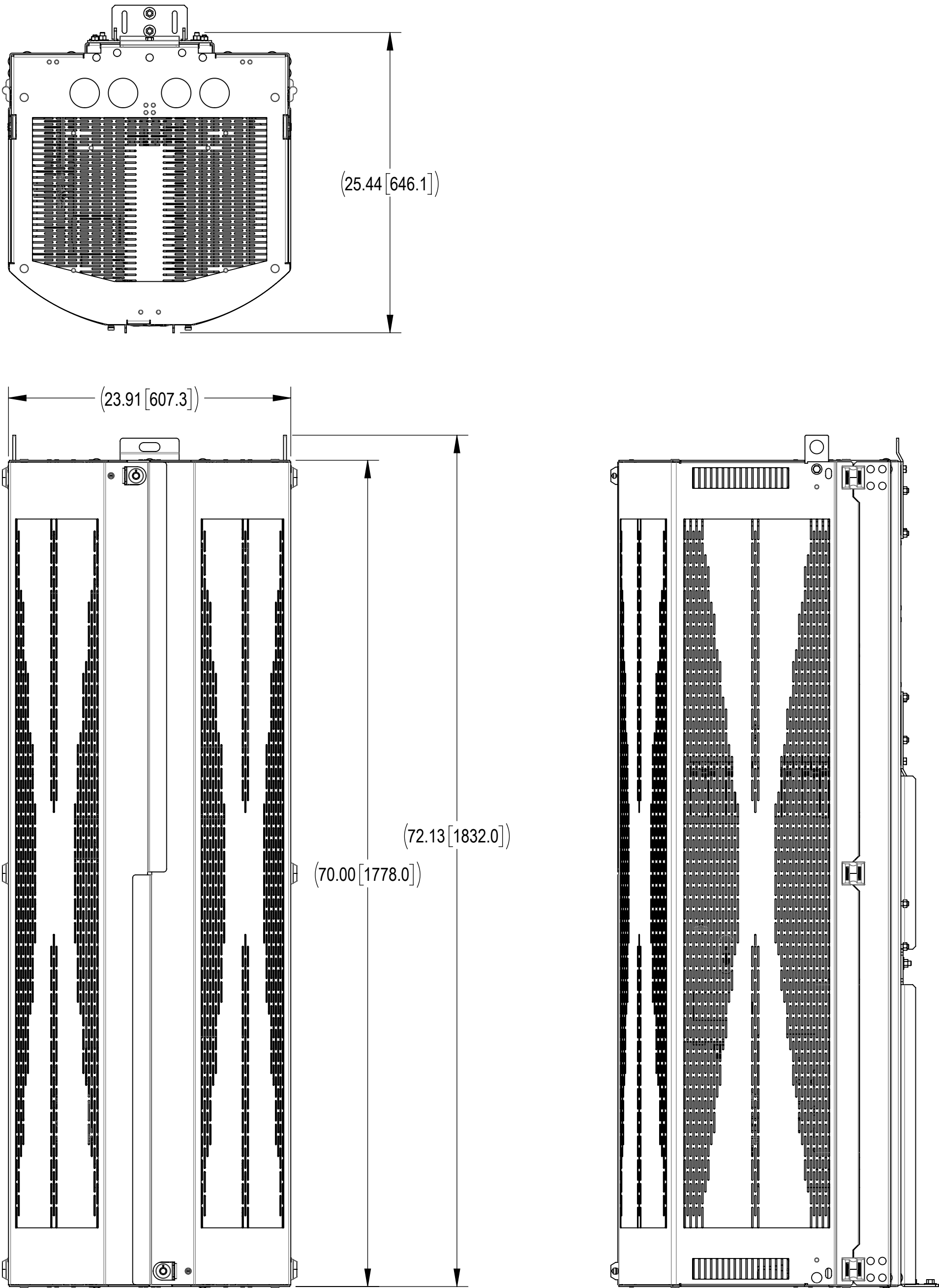
METRO BRKS ERC CONFIG 1 HCRE



REVISIONS			
REV.	DESCRIPTION	DATE	APPROVED
A	INITIAL RELEASE	MS1288 26MAR25	LX1002 50101974AMO

This table show the evolution and history of document from initial to current version.

Further information regarding ANDREW's commitment can be found at <https://www.andrew.com/sustainability/>.
Visit our website or contact your local ANDREW representative for more information.
This product is covered by one or more U.S. patents or their foreign equivalents. For patents, see www.adwpat.com.

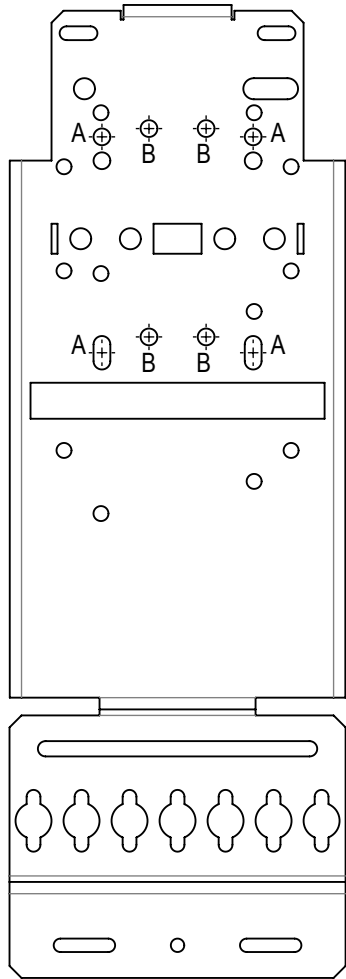


- 1.0 GENERAL NOTES
- 1.1 ALL METRIC DIMENSIONS ARE IN BRACKETS [X.X]
- 2.0 DESIGN NOTES
- 3.0 MANUFACTURING/SPECIAL REQUIREMENTS
- 3.1 TIGHTEN HARDWARE, TORQUE VALUE ARE SHOWN BELOW AS REFERENCE,
M6: TORQUE 40.0 IN-LB OR 4.5 N-M (W/ CLIP NUT)
M6: TORQUE 46.0 IN-LB OR 5.2 N-M (W/ THREADED CAST AL)
M6: TORQUE 75.0 IN-LB OR 8.5 N-M (W/ STEEL NUT)
M8: TORQUE 6.6 FT-LB OR 9.0 N-M (W/ THREADED CAST AL)
1/4-20: TORQUE 4.8 FT-LB OR 6.6 N-M
3/8-16: TORQUE 19.6 FT-LB OR 26.6 N-M
- 3.2 CONFIGURATIONS AND QUANTITY OF EQUIPMENTS IN INSTALLATION ARE LISTED ON TABLE.
- 3.3 EQUIPMENT INSTALLATION INSTRUCTION ON PAGE 3.

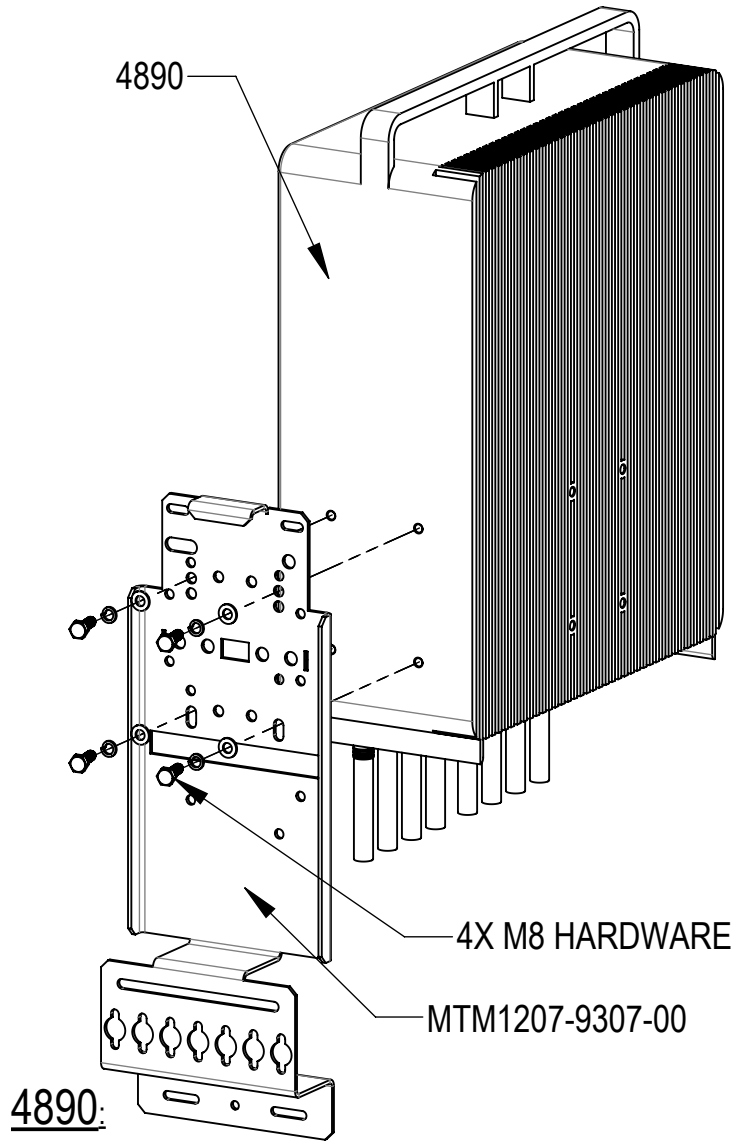
ERICSSON CONFIGURATION	3.2 APPROVED ERICSSON RADIO CONFIGURATIONS									
	4478	4890	8843	4449	4435	PSU 6308	QUAD DIPLEXER SDX1926Q-43	PTS 90X21	RAYCAP "RSD-F SERIES"	RAYCAP "RSCAC SERIES"
1	1	1			1	1	1	1		
2	1	1			1	1	1		1	
3	1	1			1	1	1			1
4	1		1		1	1	1	1		
5	1		1		1	1	1		1	
6	1		1		1	1	1			1
7		1		1	1	1	1			1
8		1		1	1	1	1	1		
9		1		1	1	1	1		1	

EQUIPMENT MOUNTING INSTALLATION

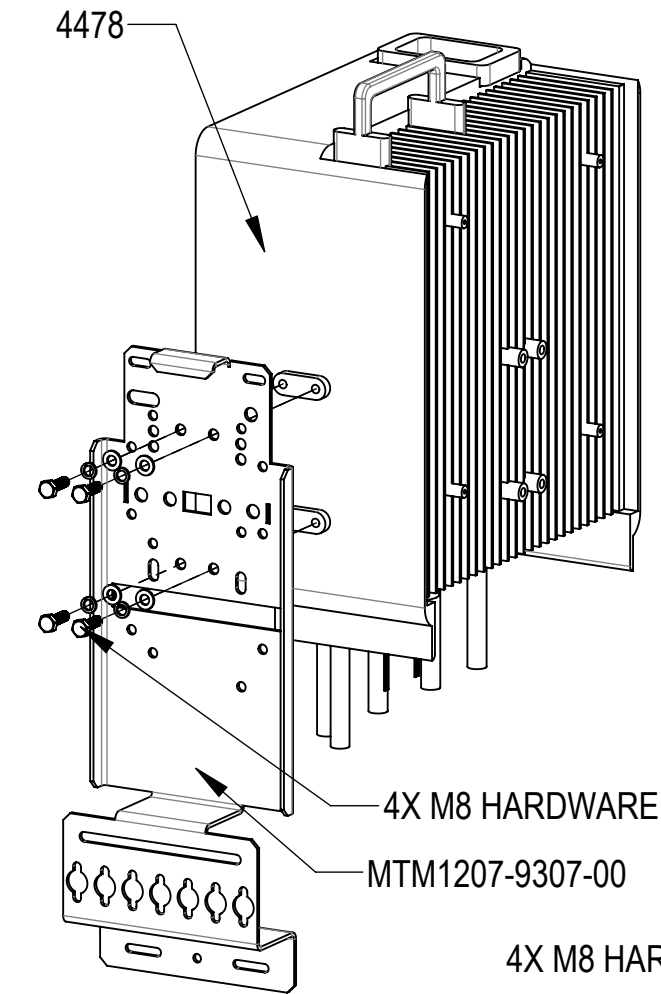
RADIO INSTALLATION
HCRE MOUNTING BRACKET
MTM1207-9307-00



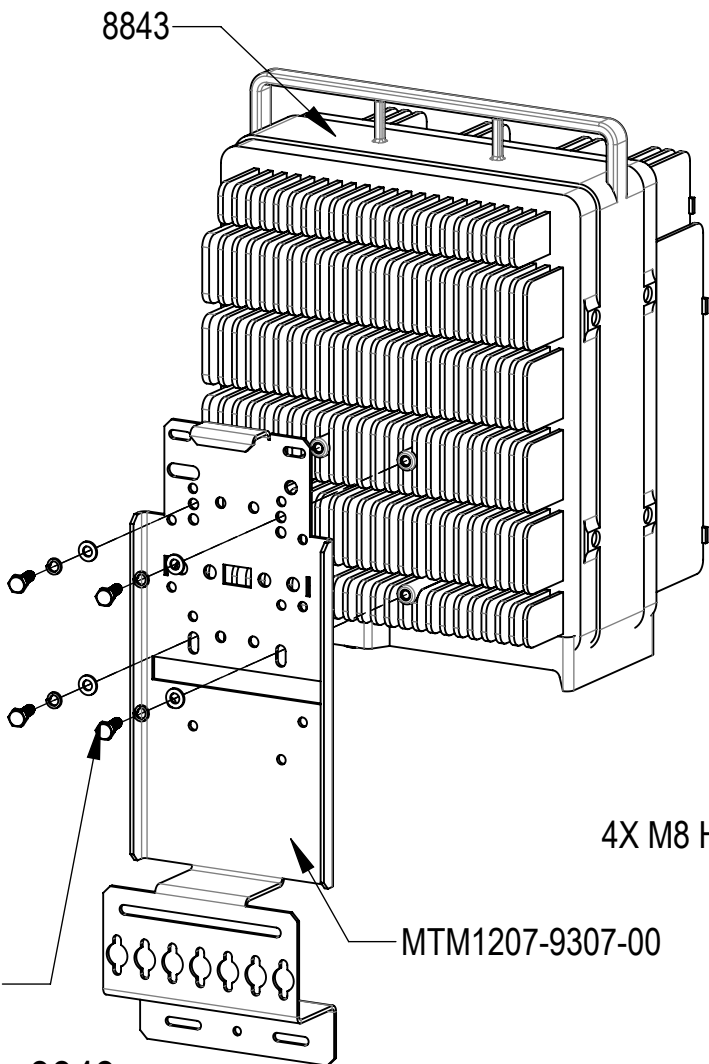
"A": 4890, 8843 , 4449
"B": 4478



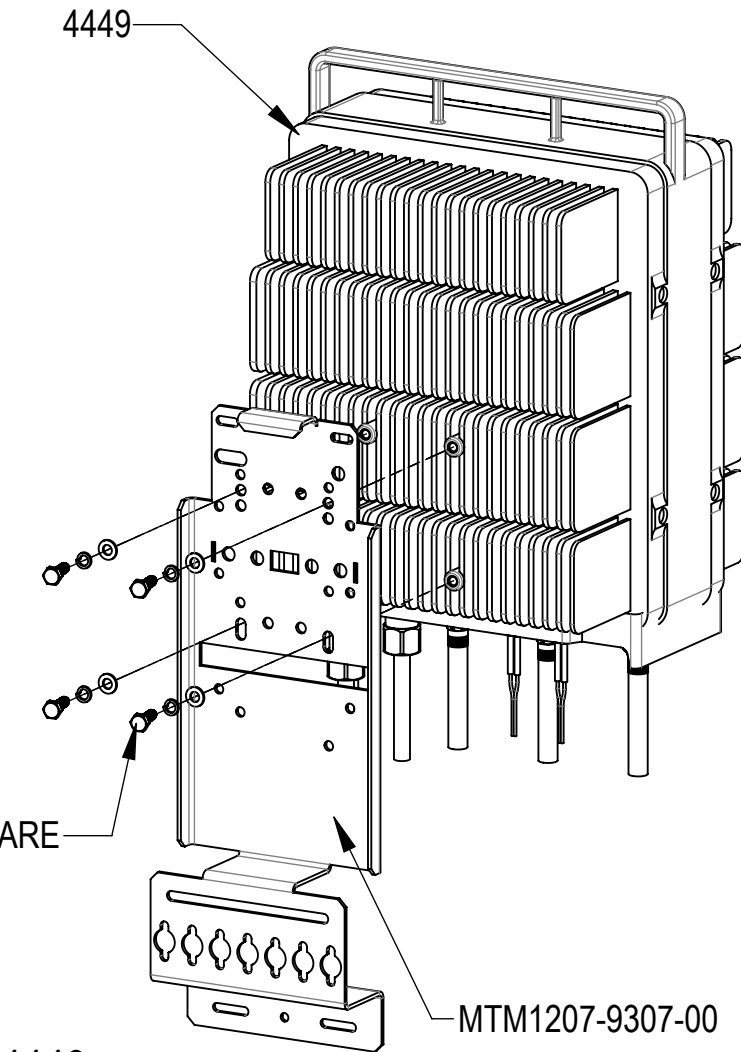
INSTALL 4890 TO THE BRACKET MTM1207-9307-00 USING 4 SETS OF M8 HEX BOLT, LOCK WASHER AND FLAT WASHER AS SHOWN



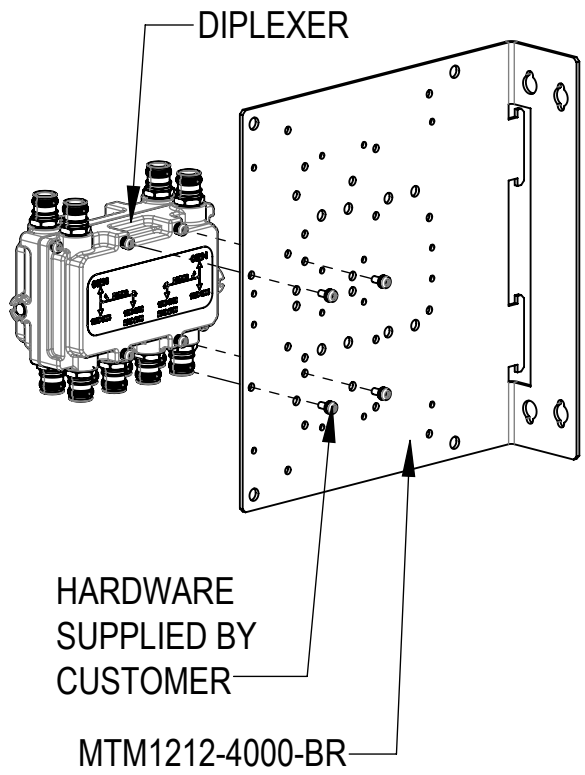
INSTALL 4478 TO THE BRACKET MTM1207-9307-00 USING 4 SETS OF M8 HEX BOLT, LOCK WASHER AND FLAT WASHER AS SHOWN



INSTALL 8843 TO THE BRACKET MTM1207-9307-00 USING 4 SETS OF M8 HEX BOLT, LOCK WASHER AND FLAT WASHER AS SHOWN

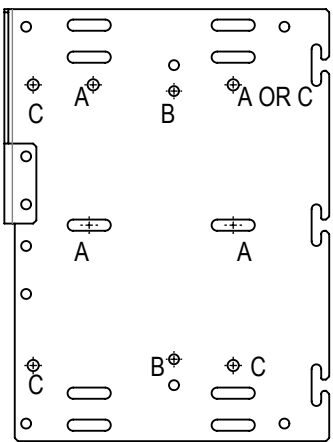


INSTALL 4449 TO THE BRACKET MTM1207-9307-00 USING 4 SETS OF M8 HEX BOLT, LOCK WASHER AND FLAT WASHER AS SHOWN

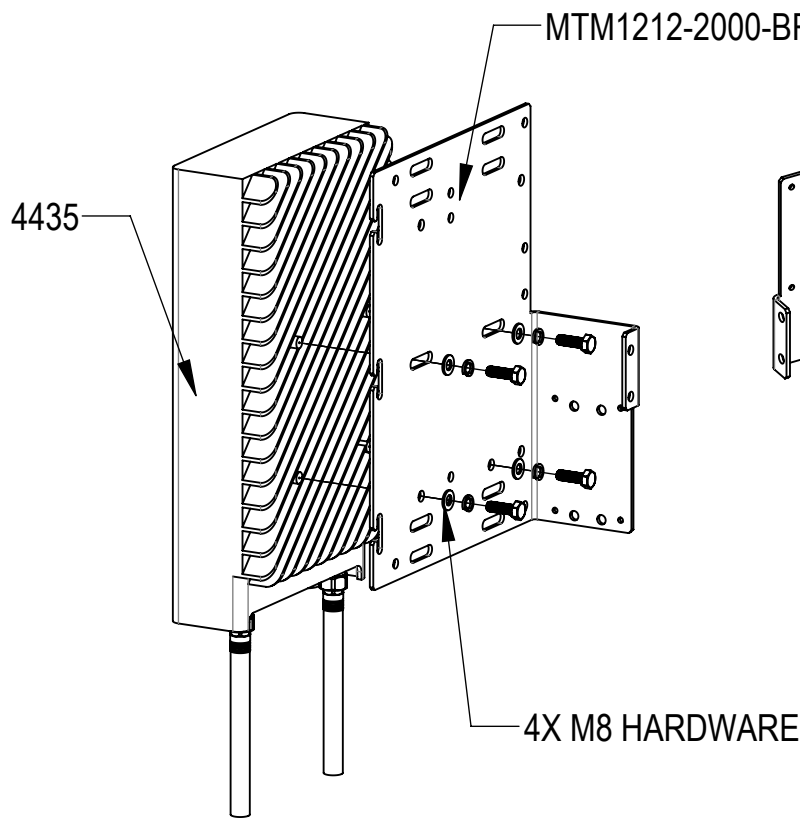


INSTALL DIPLEXER TO THE BRACKET MTM1212-4000-BR USING 4 SETS OF M5 HEX BOLT, LOCK WASHER AND FLAT WASHER AS SHOWN

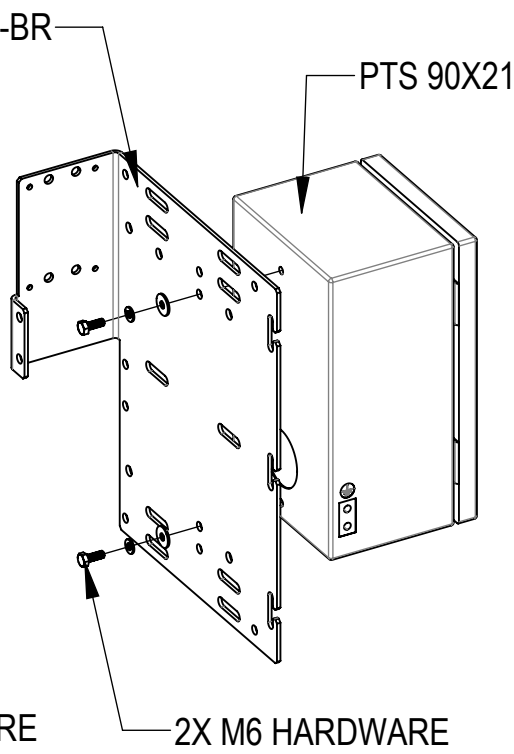
RADIO INSTALLATION
HCRE MOUNTING BRACKET
MTM1212-2000-BR



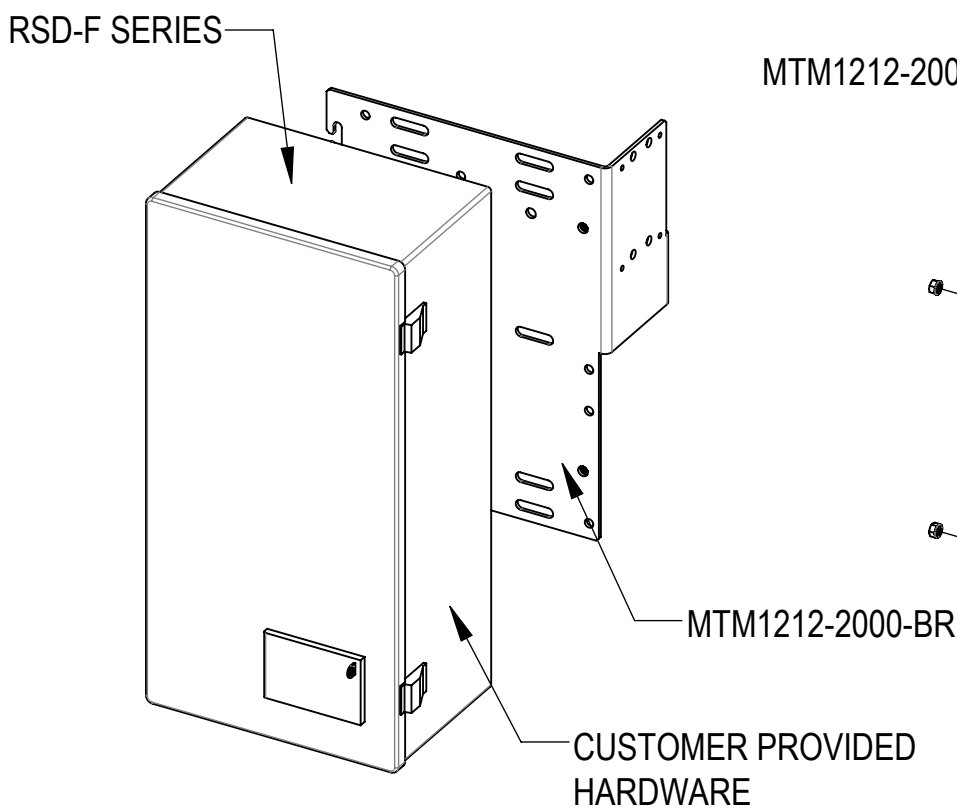
"A": 4435
"B": PTS 90X21
"C": RSCAC SERIES



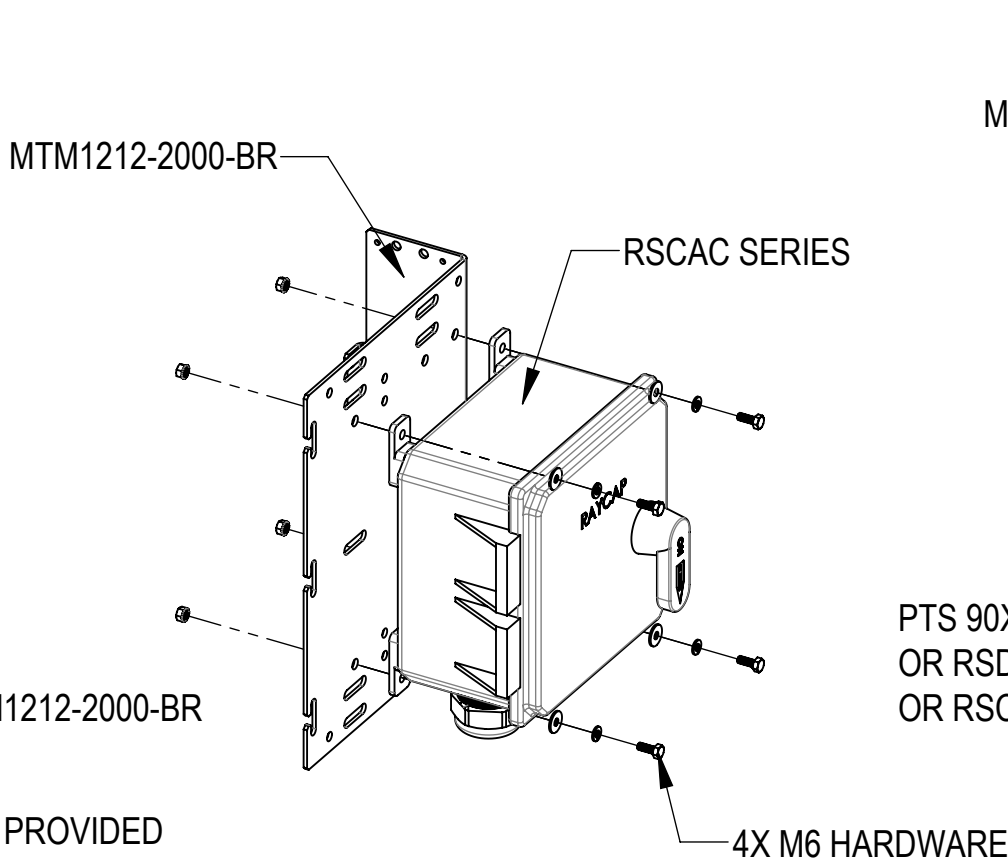
INSTALL 4435 TO THE BRACKET MTM1212-2000-BR USING 4 SETS OF M8 HEX BOLT, LOCK WASHER AND FLAT WASHER AS SHOWN



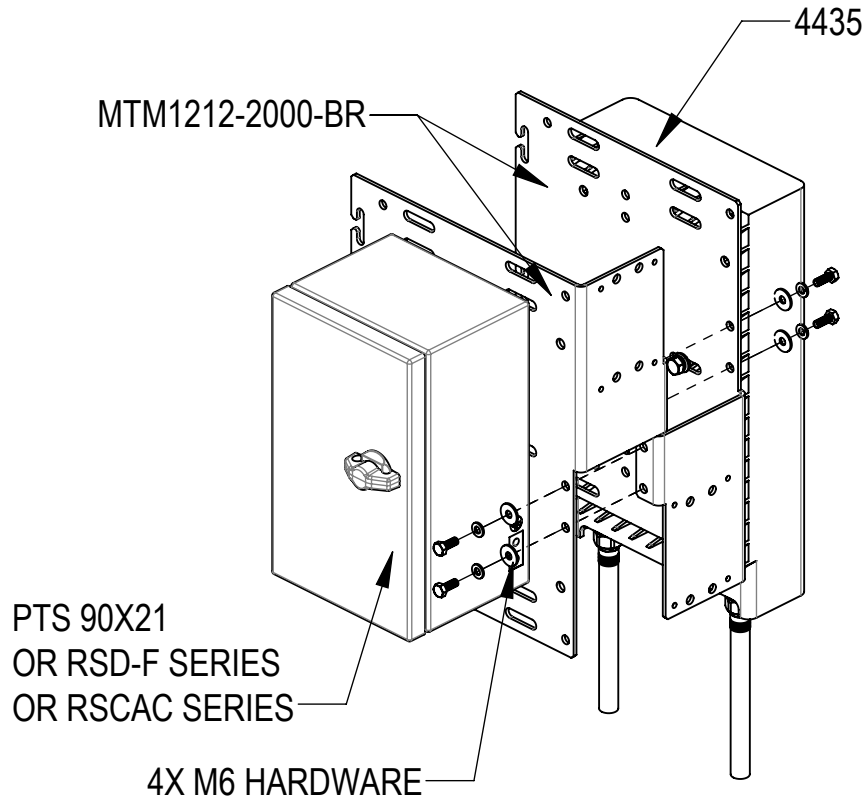
INSTALL PTS 90X21 TO THE BRACKET MTM1212-2000-BR USING 2 SETS OF M6 HEX BOLT, LOCK WASHER AND FLAT WASHER AS SHOWN



INSTALL RSD-F SERIES TO THE BRACKET MTM1212-2000-BR USING 4 SETS OF M6 HEX BOLT, LOCK WASHER AND FLAT WASHER AS SHOWN



INSTALL RSCAC SERIES TO THE BRACKET MTM1212-2000-BR USING 4 SETS OF M6 HEX BOLT, LOCK WASHER, FLAT WASHER AND NUT AS SHOWN

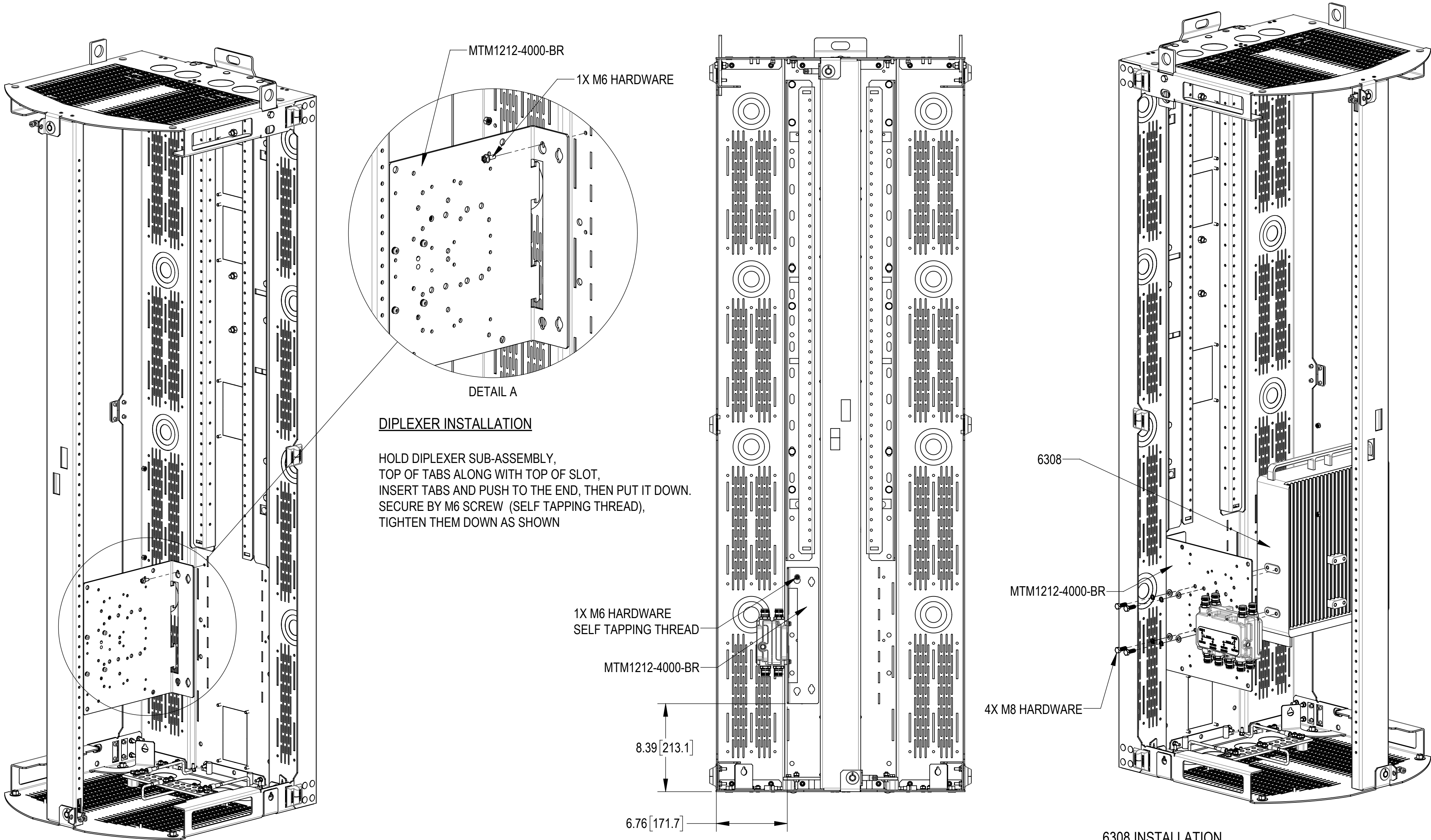


INSTALL PTS 90X21 OR RSD-F SERIES OR RSCAC SERIES SUB-ASSEMBLY TO 4435 SUB-ASSEMBLY USING 4 SETS OF M6 HEX BOLT, LOCK WASHER AND FLAT WASHER AS SHOWN

Installation Instructions



DIPLEXER AND PSU 6308 INSTALLATION



DIPLEXER INSTALLATION

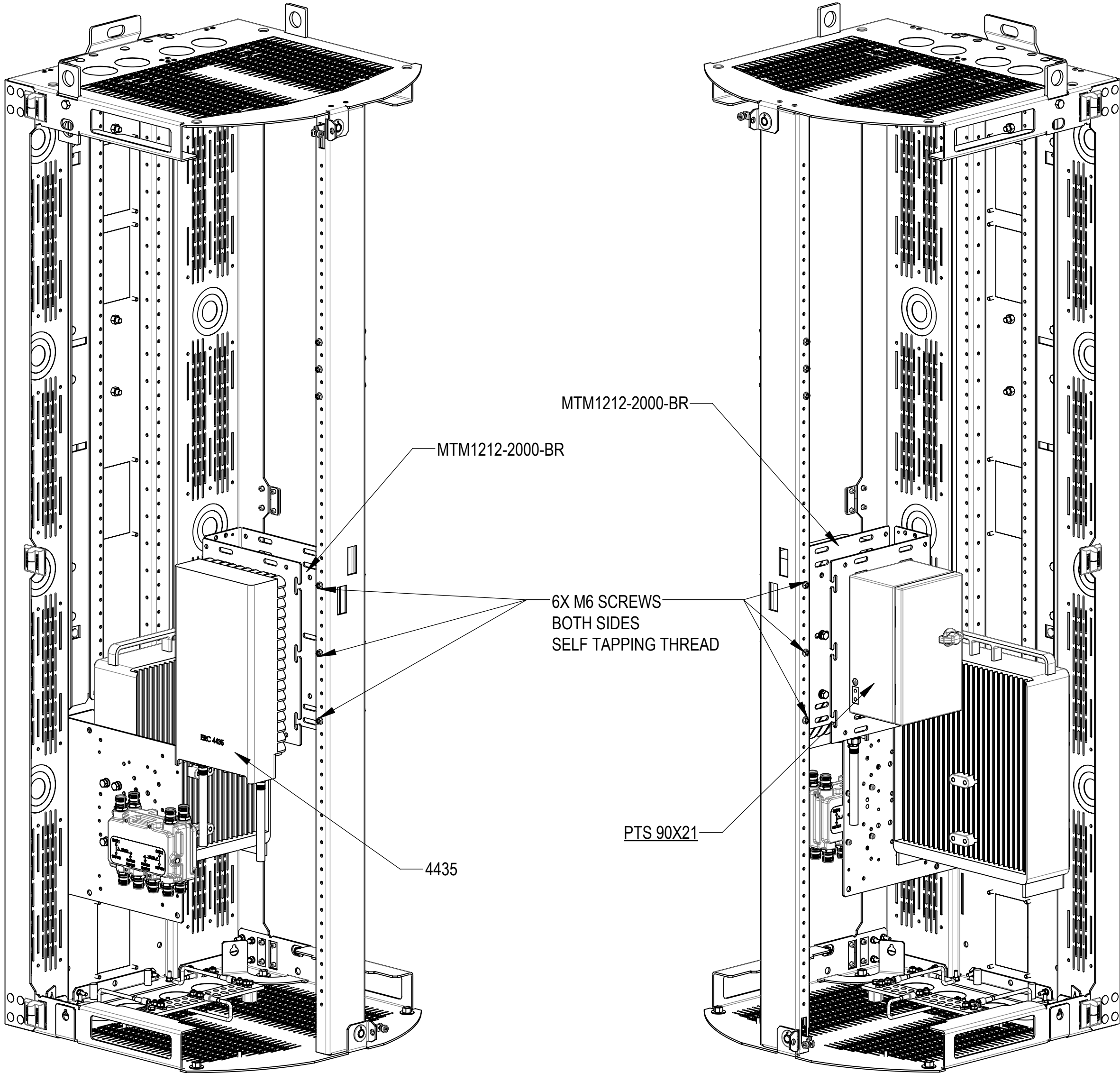
HOLD DIPLEXER SUB-ASSEMBLY,
TOP OF TABS ALONG WITH TOP OF SLOT,
INSERT TABS AND PUSH TO THE END, THEN PUT IT DOWN.
SECURE BY M6 SCREW (SELF TAPPING THREAD),
TIGHTEN THEM DOWN AS SHOWN

FRONT VIEW
BRACKET MTM1212-4000-BR LOCATION SHOWN
(DOORS NOT SHOWN)

6308 INSTALLATION

INSTALL 6308 ON BRACKET MTM1212-4000-BR AND USING 4
SETS OF M8 HEX BOLT, LOCK WASHER AND FLAT WASHER AS SHOWN

4435 AND PTS 90X21 INSTALLATION

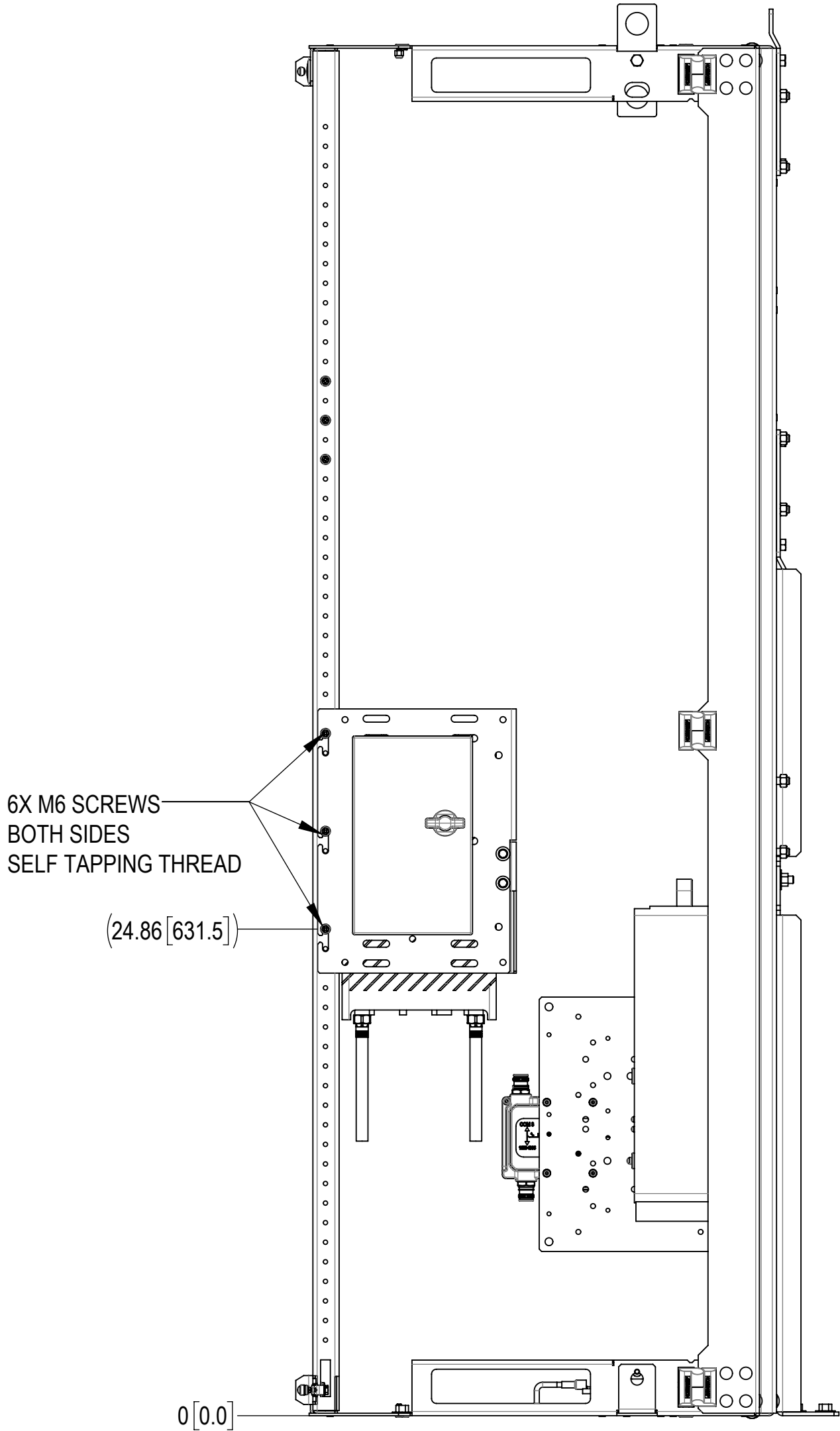


4435 INSTALLATION

HANG 4435 SUB-ASSEMBLY ON THE M6 SCREWS (SELF TAPPING THREAD),
TIGHTEN THEM DOWN AS SHOWN

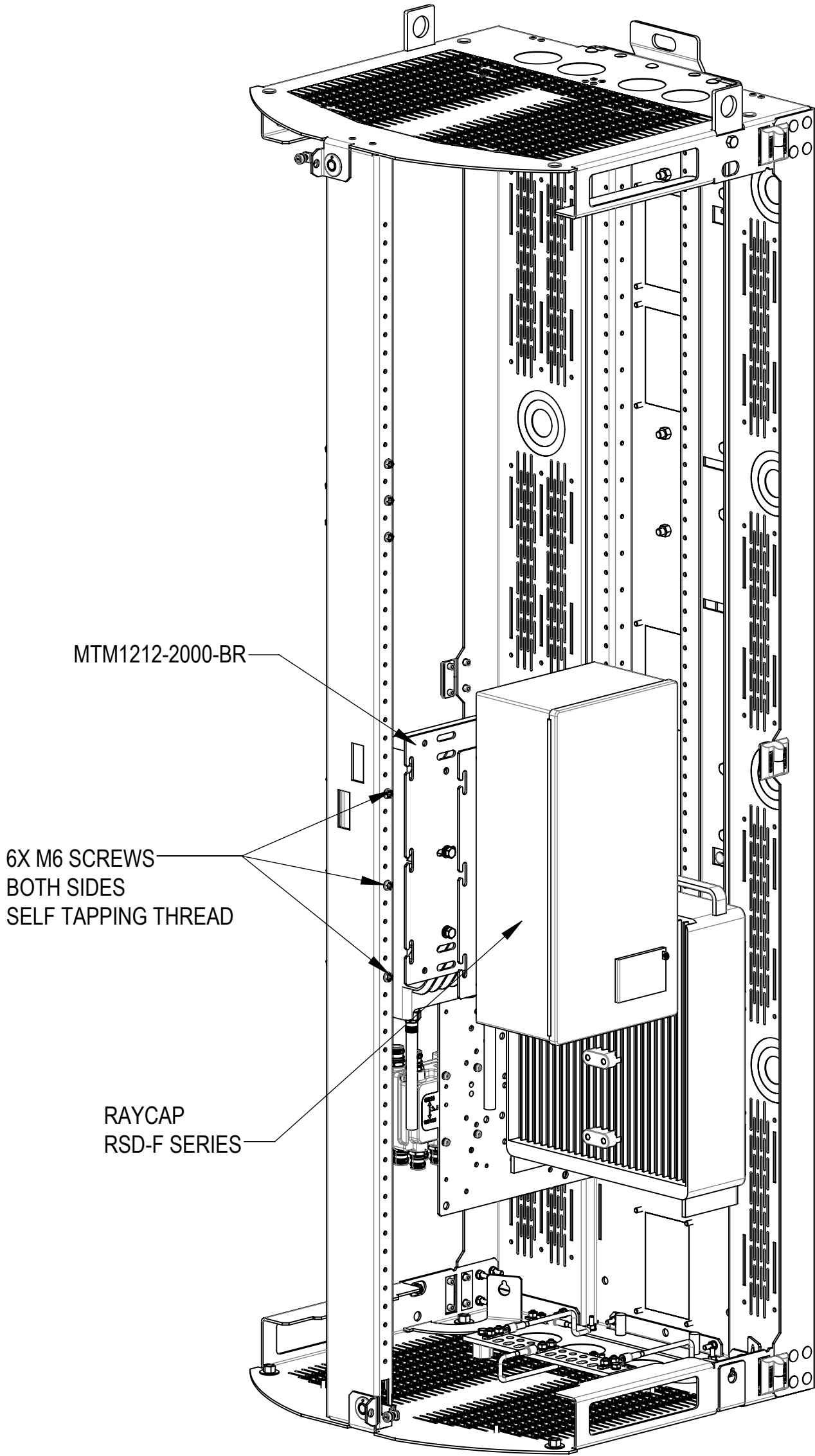
PTS 90X21 INSTALLATION

HANG PTS 90X21 SUB-ASSEMBLY ON THE M6 SCREWS (SELF TAPPING THREAD),
TIGHTEN THEM DOWN AS SHOWN



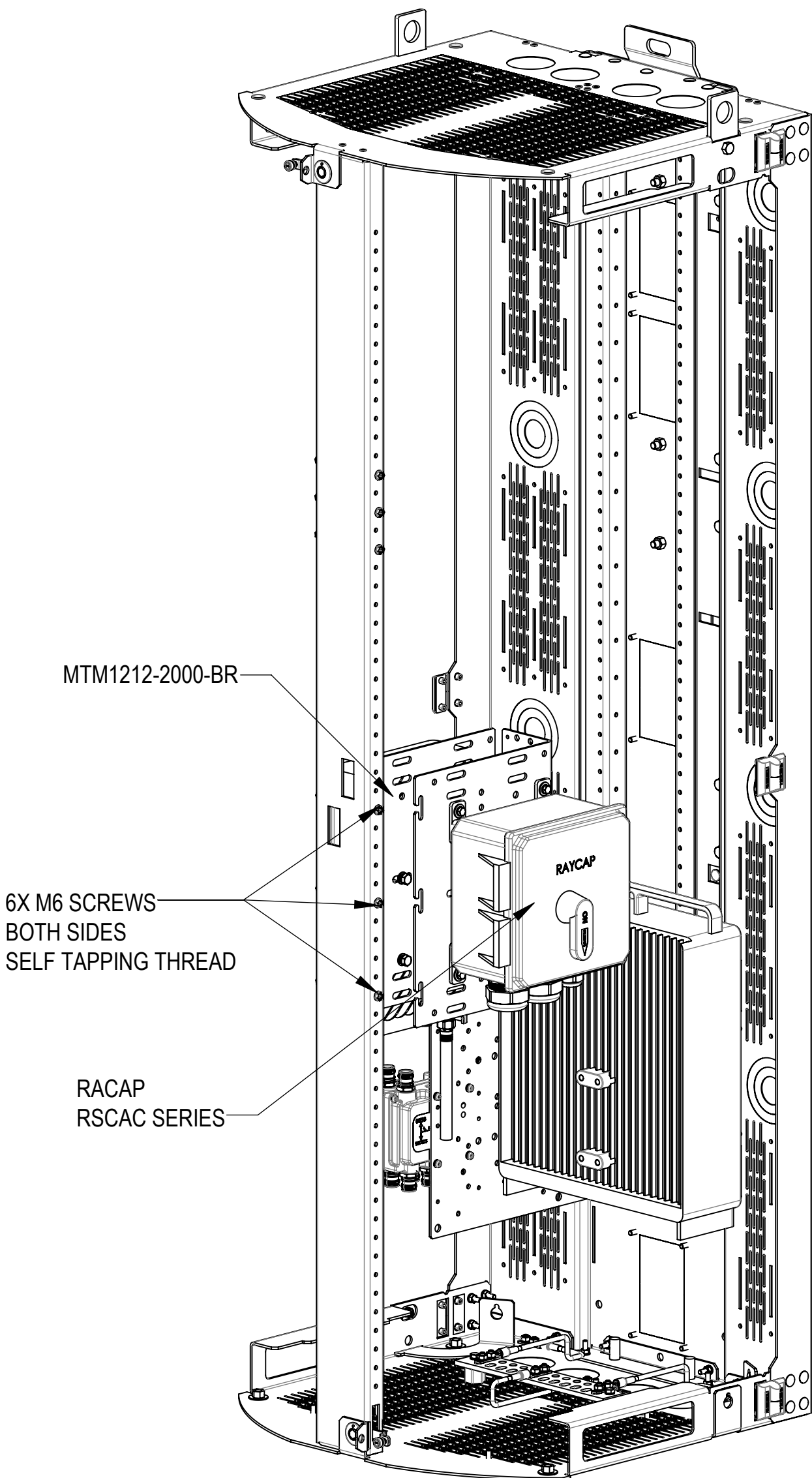
RIGHT VIEW
M6 SCREWS LOCATION SHOWN
(DOORS NOT SHOWN)

RSD-F SERIES AND RSCAC SERIES INSTALLATION



RSD-F SERIES INSTALLATION

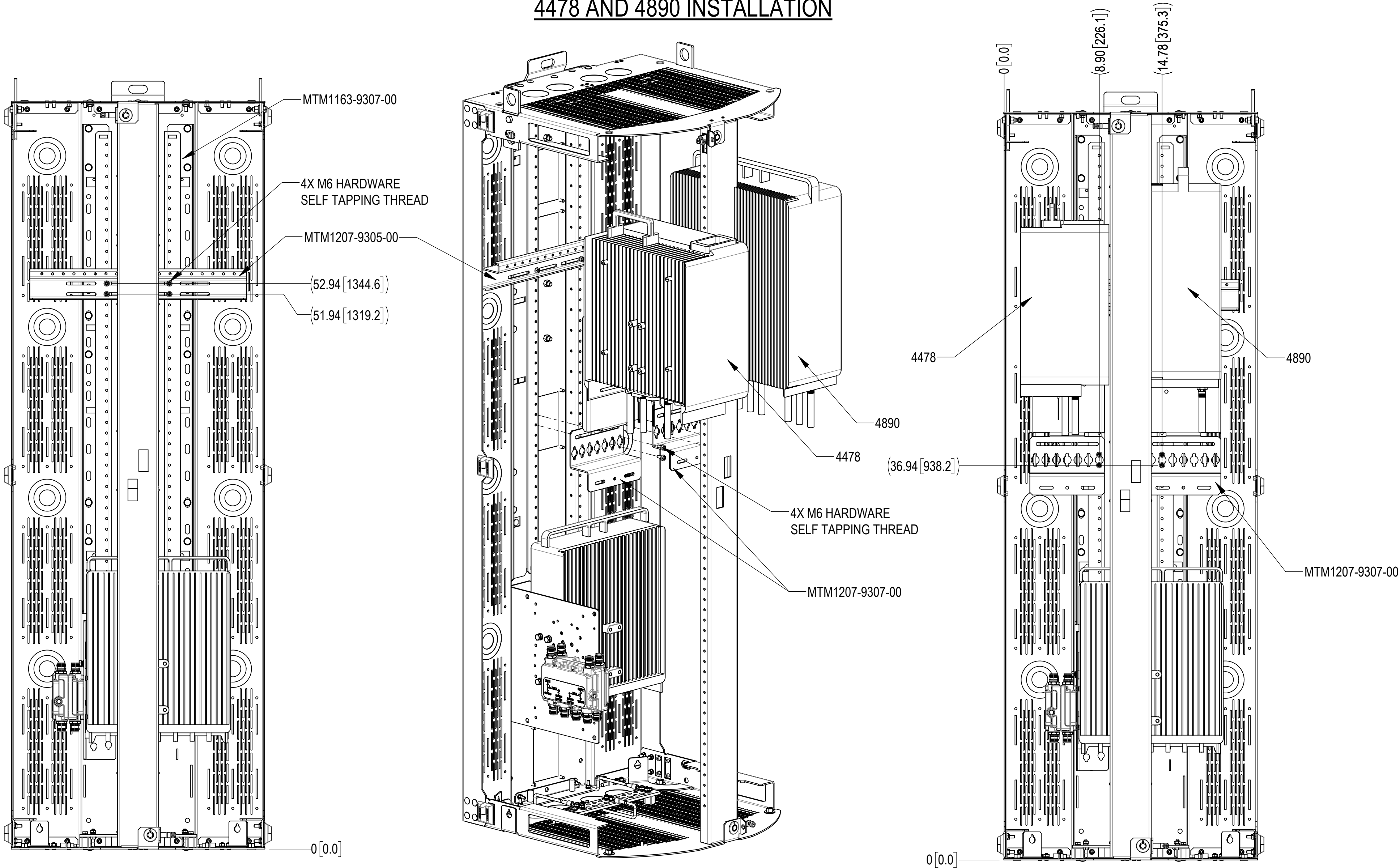
HANG RSD-F SERIES SUB-ASSEMBLY ON THE M6 SCREWS (SELF TAPPING THREAD), TIGHTEN THEM DOWN AS SHOWN



RSCAC SERIES INSTALLATION

HANG RSCAC SERIES SUB-ASSEMBLY ON THE M6 SCREWS (SELF TAPPING THREAD), TIGHTEN THEM DOWN AS SHOWN

4478 AND 4890 INSTALLATION



MTM1207-9305-00 INSTALLATION

INSTALL THE BRACKET MTM1207-9305-00 TO MTM1163-9307-00 USING 4 SETS OF M6 SCREWS (SELF TAPPING THREAD), TIGHTEN THEM DOWN AS SHOWN

4478 AND 4890 INSTALLATION

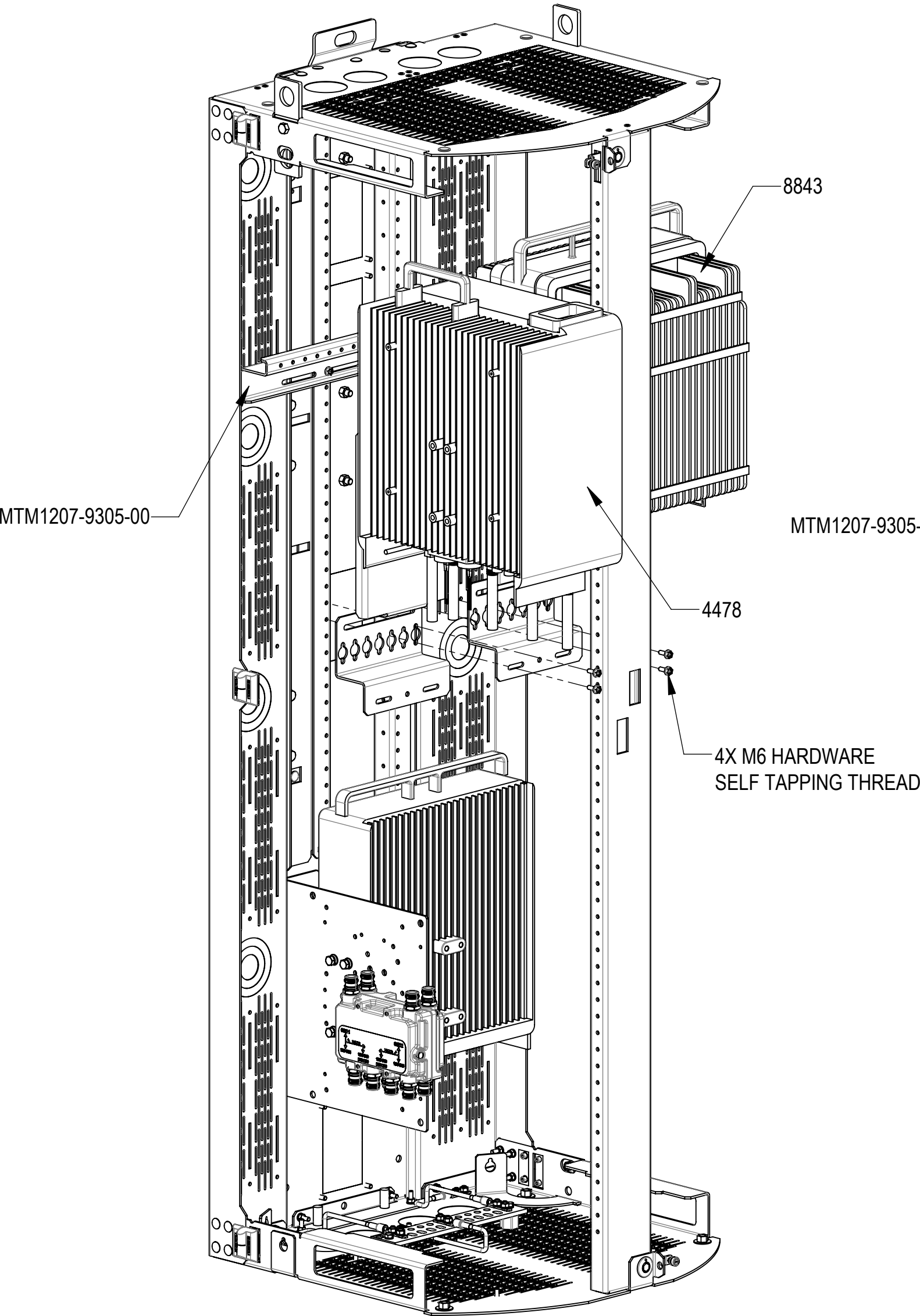
HANG 4478 & 4890 SUB-ASSEMBLY ON THE MTM1207-9305-00 AND SECURE BY 4 SETS OF M6 SCREWS (SELF TAPPING THREAD), TIGHTEN THEM DOWN AS SHOWN

FRONT VIEW
BRACKET MTM1207-9307-00 LOCATION SHOWN
(DOORS NOT SHOWN)

Installation Instructions

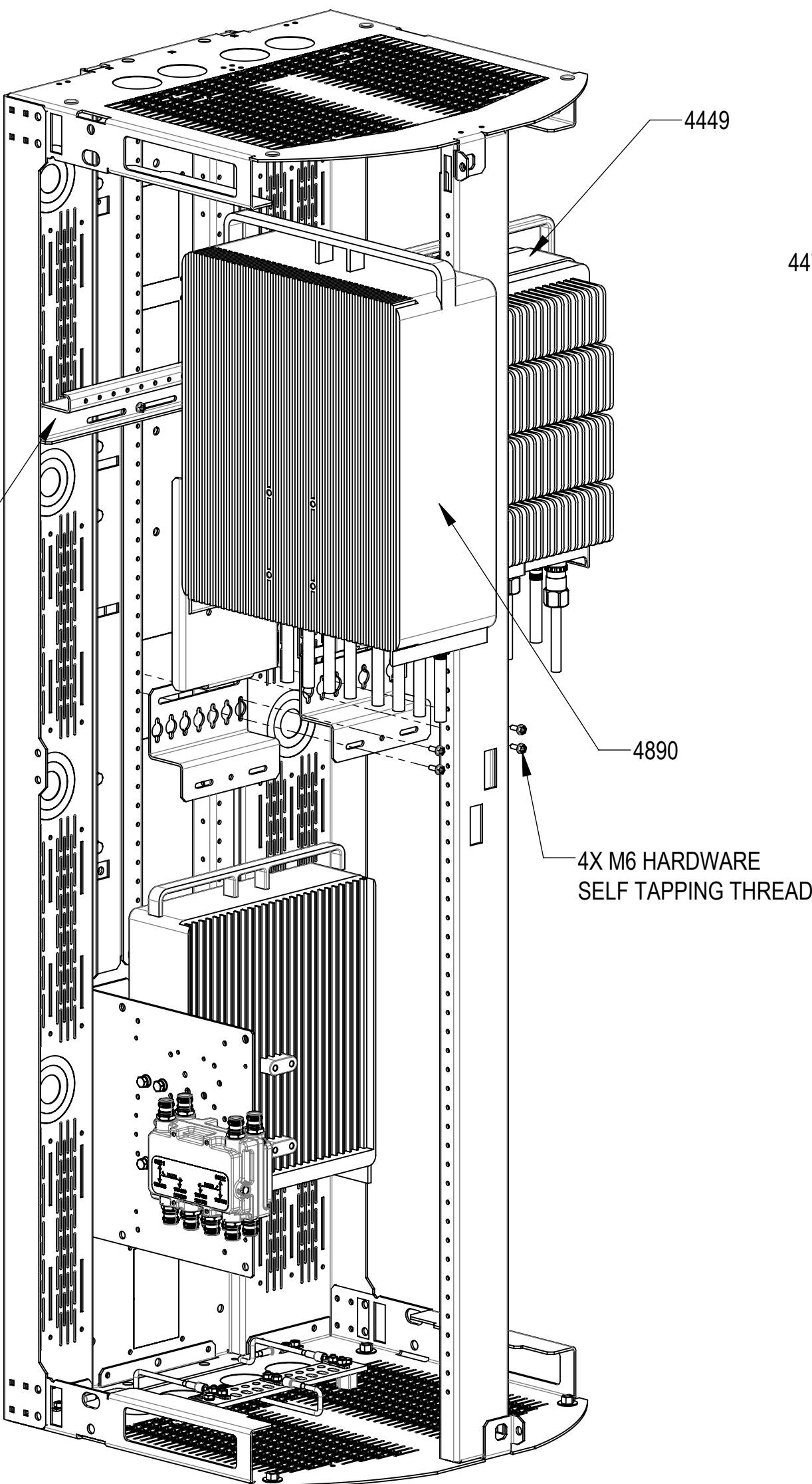


4478, 8843, 4449 AND 4890 INSTALLATION



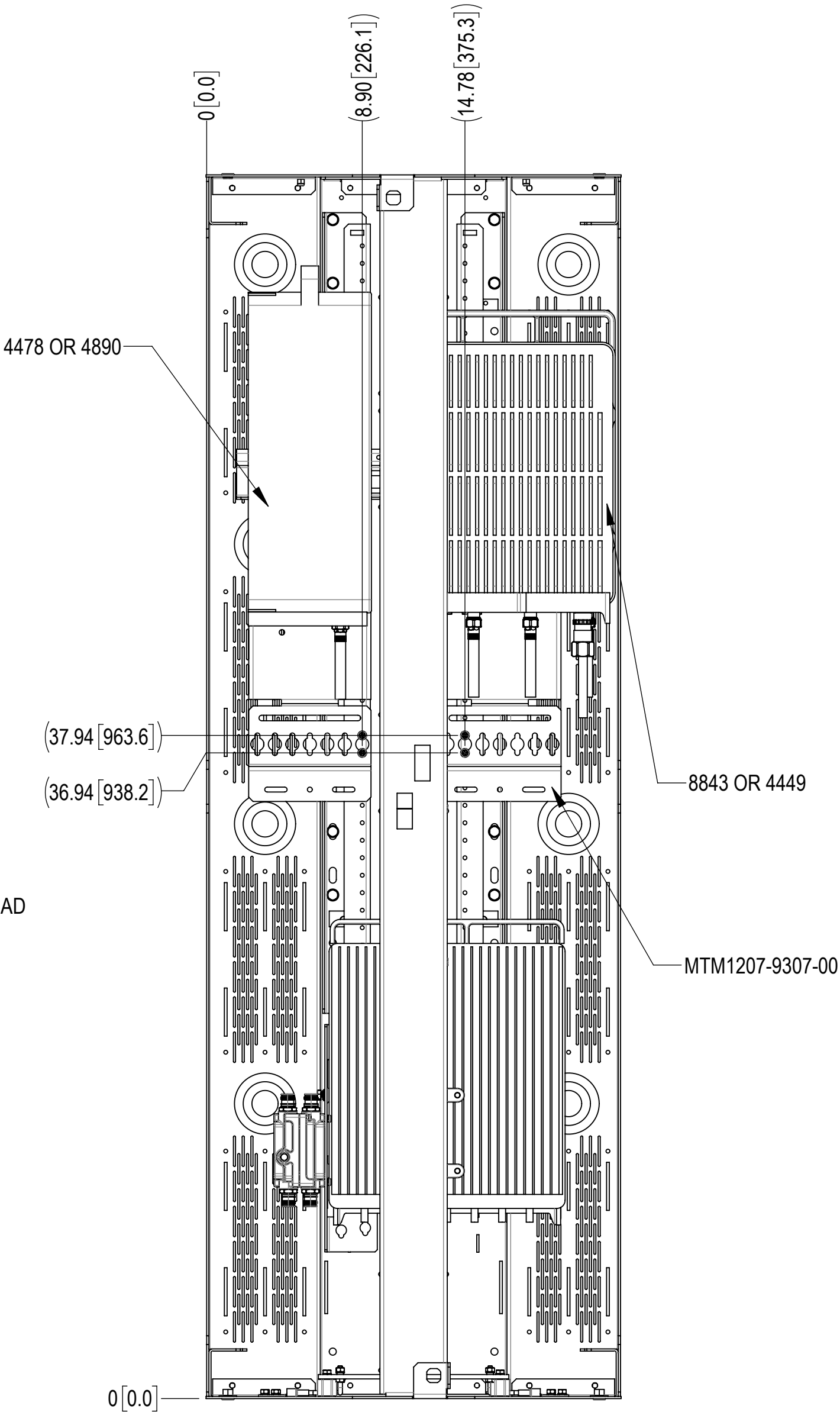
4478 AND 8843 INSTALLATION

HANG 4478 & 8843 SUB-ASSEMBLY ON THE MTM1207-9305-00 AND SECURE BY 4 SETS OF M6 SCREWS (SELF TAPPING THREAD), TIGHTEN THEM DOWN AS SHOWN



4890 AND 4449 INSTALLATION

HANG 4890 & 4449 SUB-ASSEMBLY ON THE MTM1207-9305-00 AND SECURE BY 4 SETS OF M6 SCREWS (SELF TAPPING THREAD), TIGHTEN THEM DOWN AS SHOWN



FRONT VIEW
BRACKET MTM1207-9307-00 LOCATION SHOWN
(DOORS NOT SHOWN)

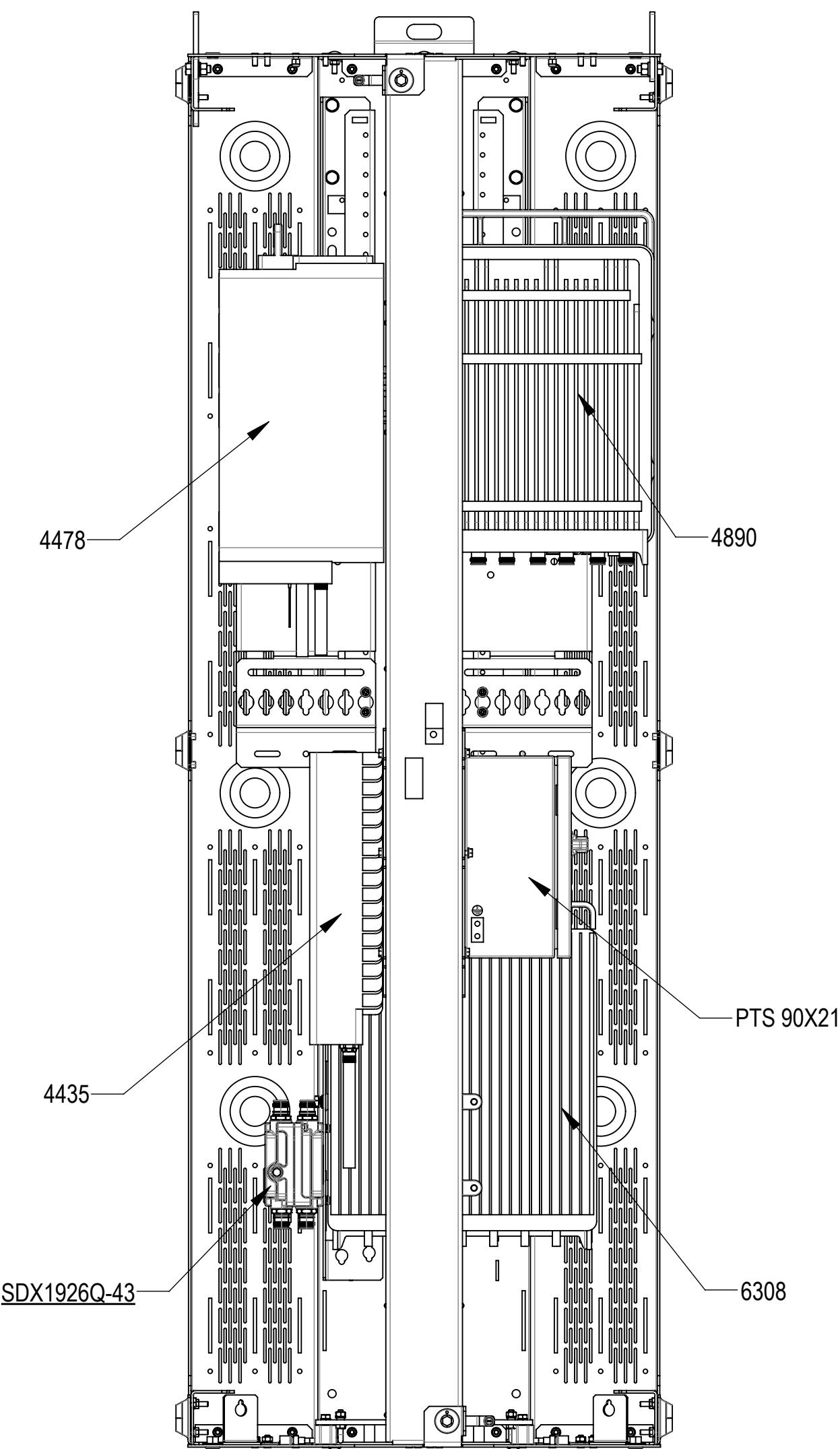
Installation Instructions



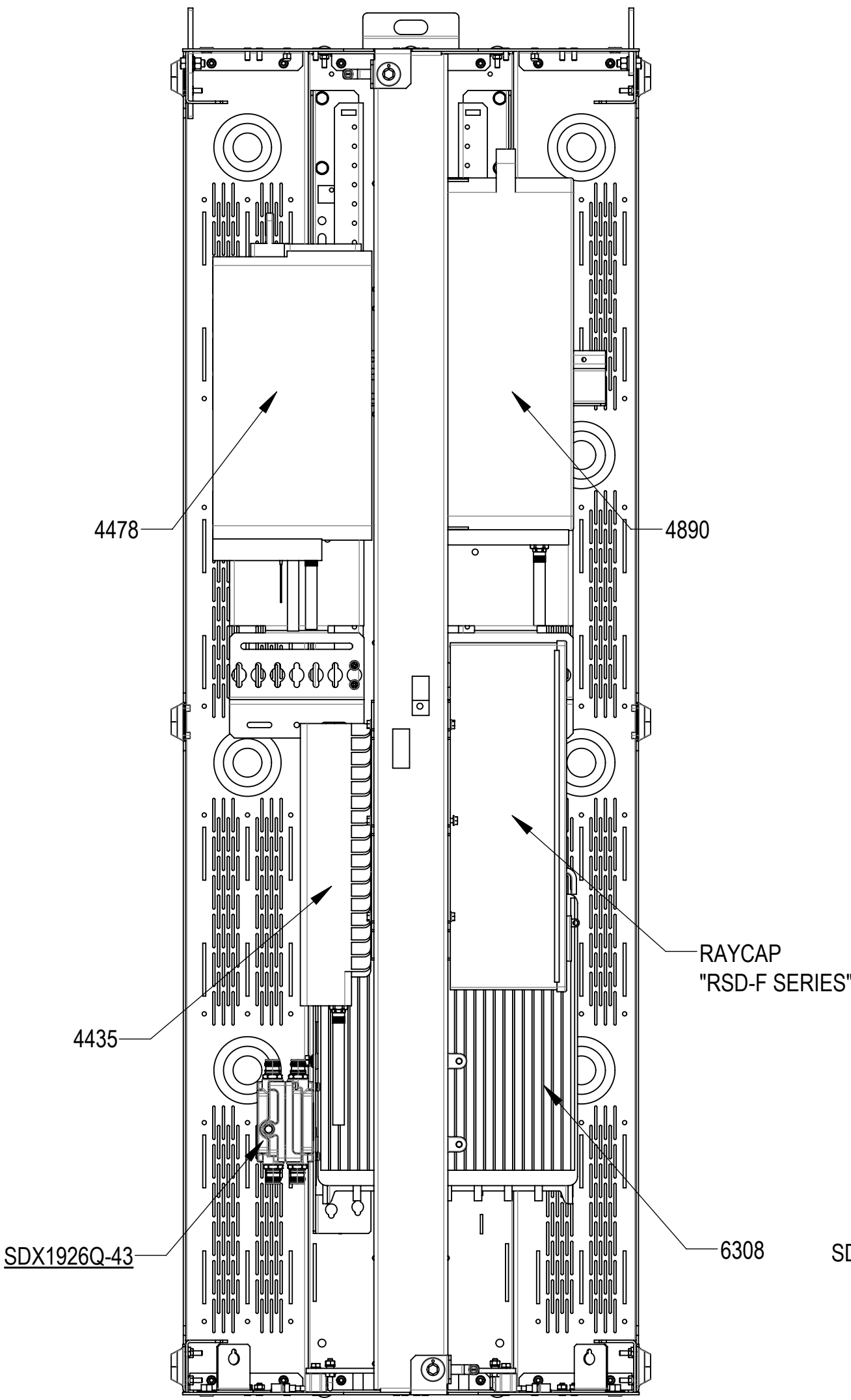
E1- 4478, 4890, 4435, PSU 6308, SDX1926Q-43 AND PTS 90X21

E2- 4478, 4890, 4435, PSU 6308, SDX1926Q-43 AND RSD-F SERIES

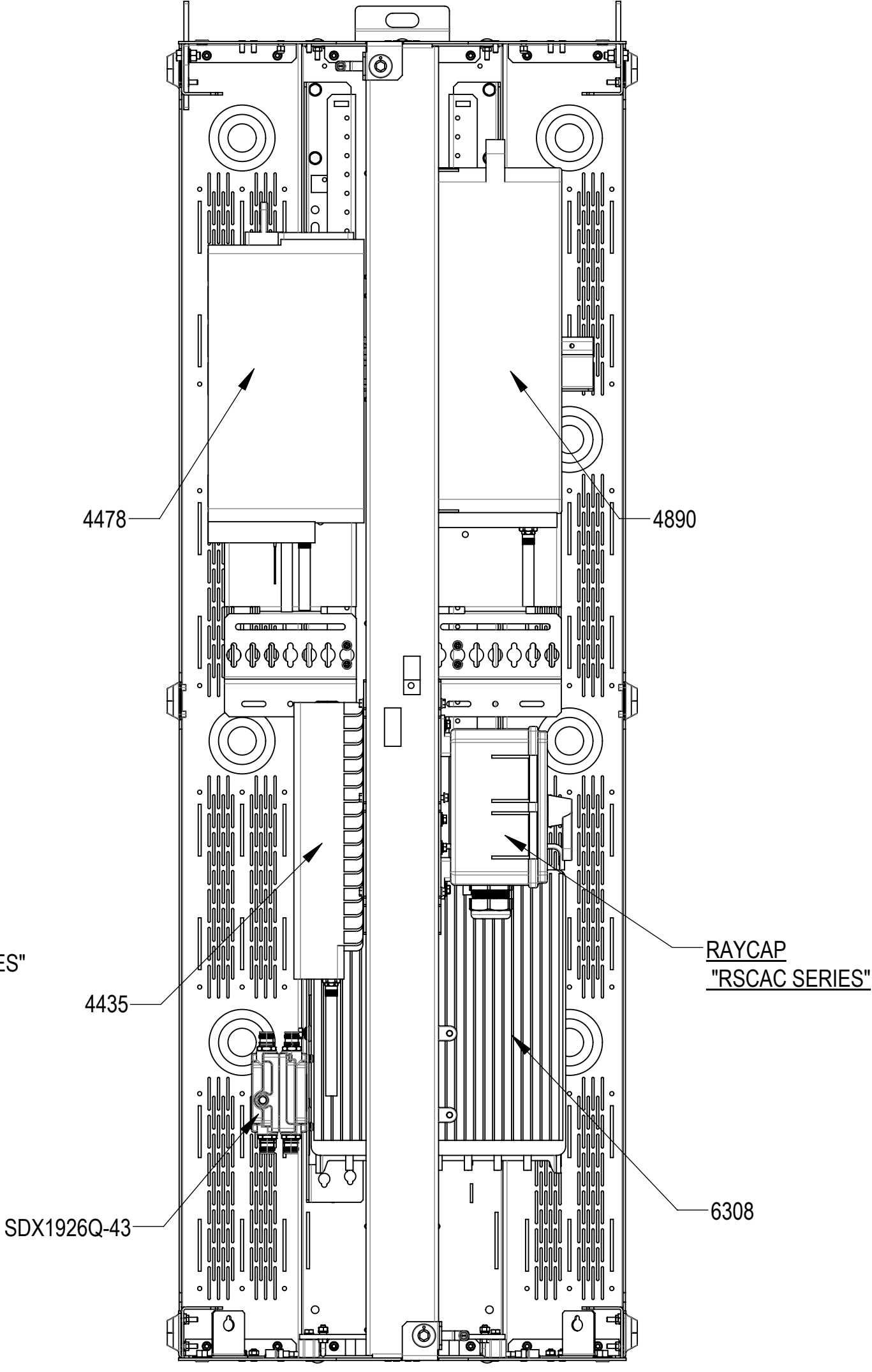
E3- 4478, 4890, 4435, PSU 6308, SDX1926Q-43 AND RSCAC SERIE



E1 CONFIG
FRONT VIEW
(DOORS NOT SHOWN FOR CLARITY)



E2 CONFIG
FRONT VIEW
(DOORS NOT SHOWN FOR CLARITY)



E3 CONFIG
FRONT VIEW
(DOORS NOT SHOWN FOR CLARITY)

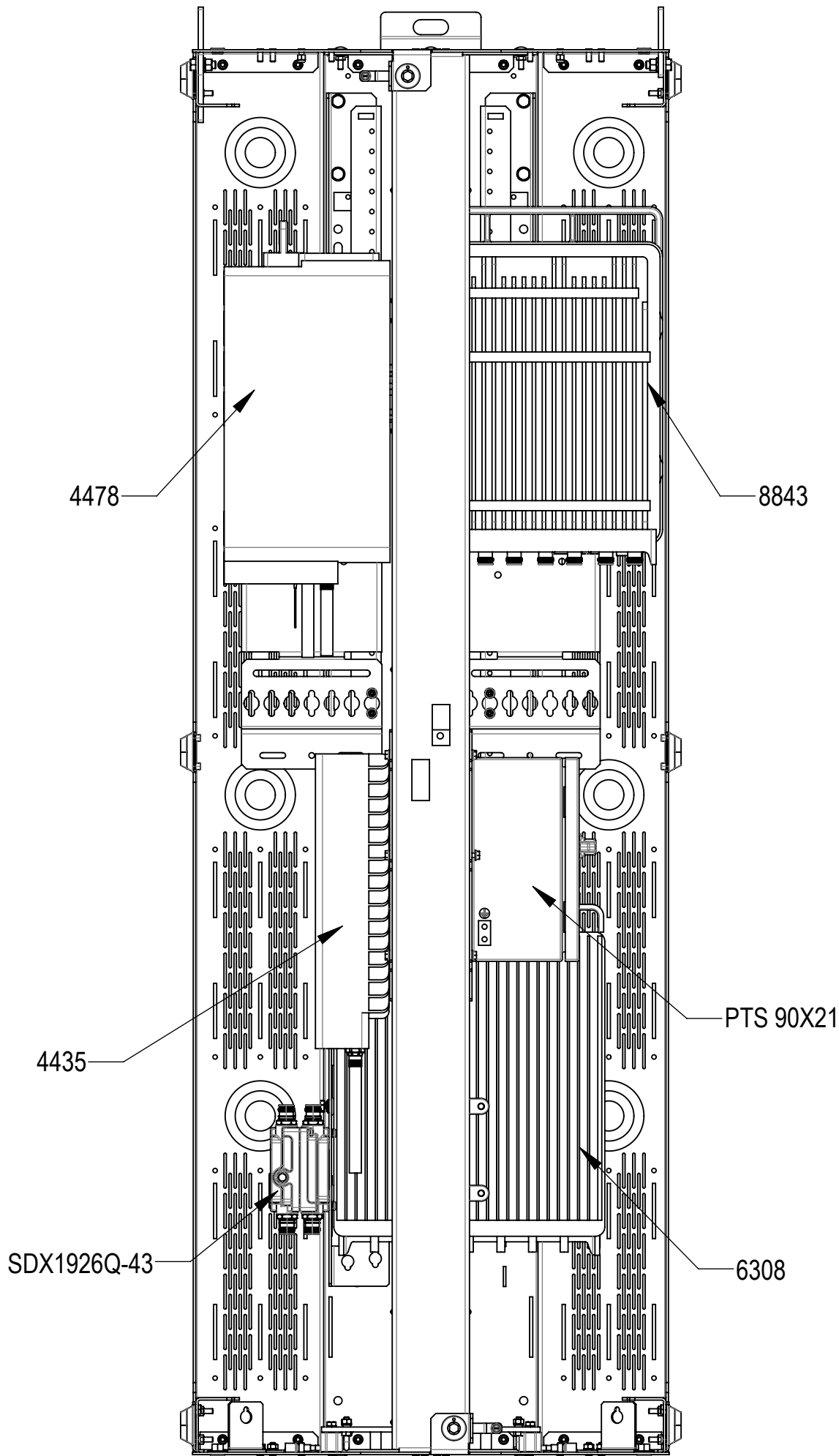
Installation Instructions



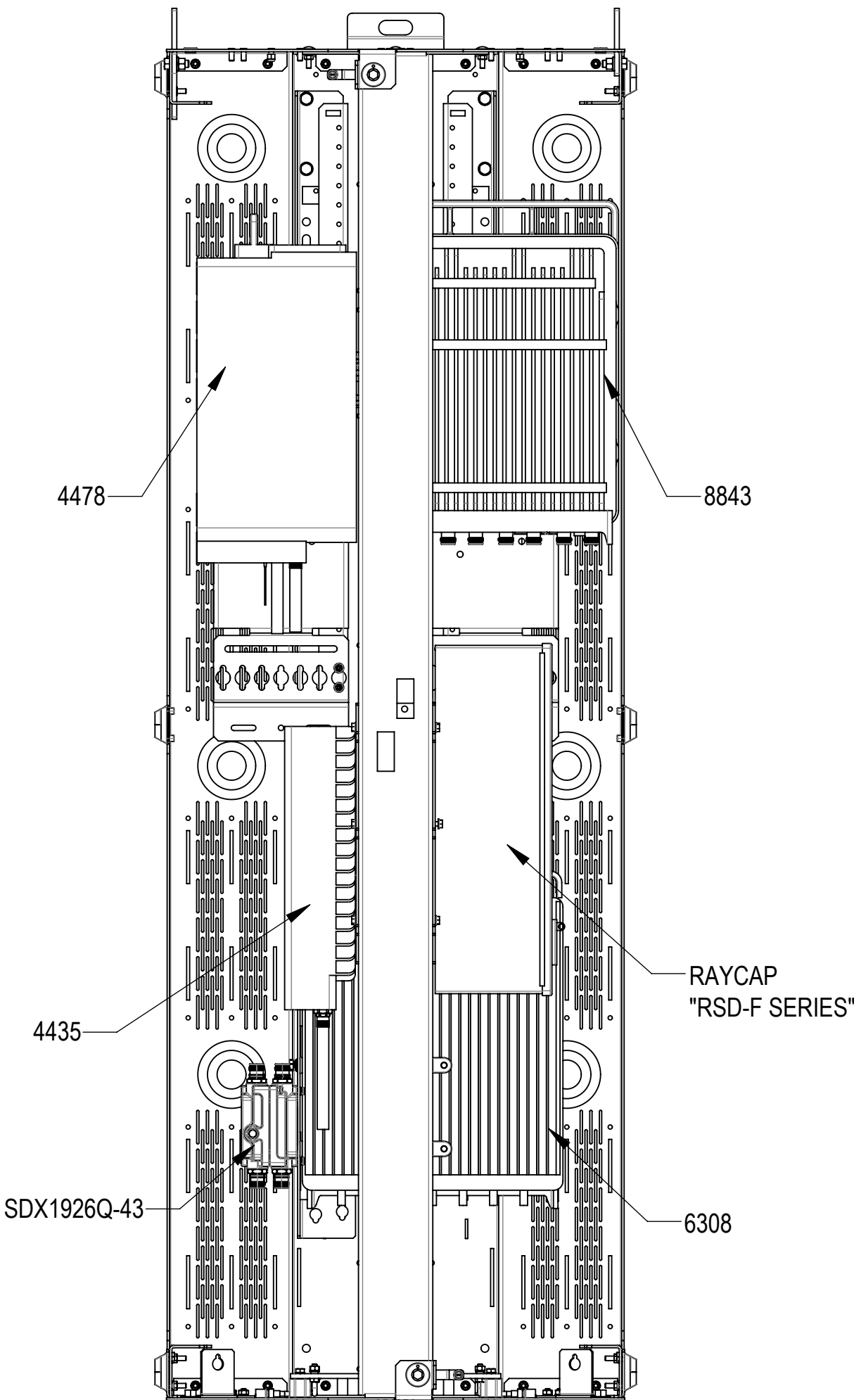
E4- 4478, 8843, 4435, PSU 6308, SDX1926Q-43 AND PTS 90X21

E5- 4478, 8843, 4435, PSU 6308, SDX1926Q-43 AND RSD-F SERIES

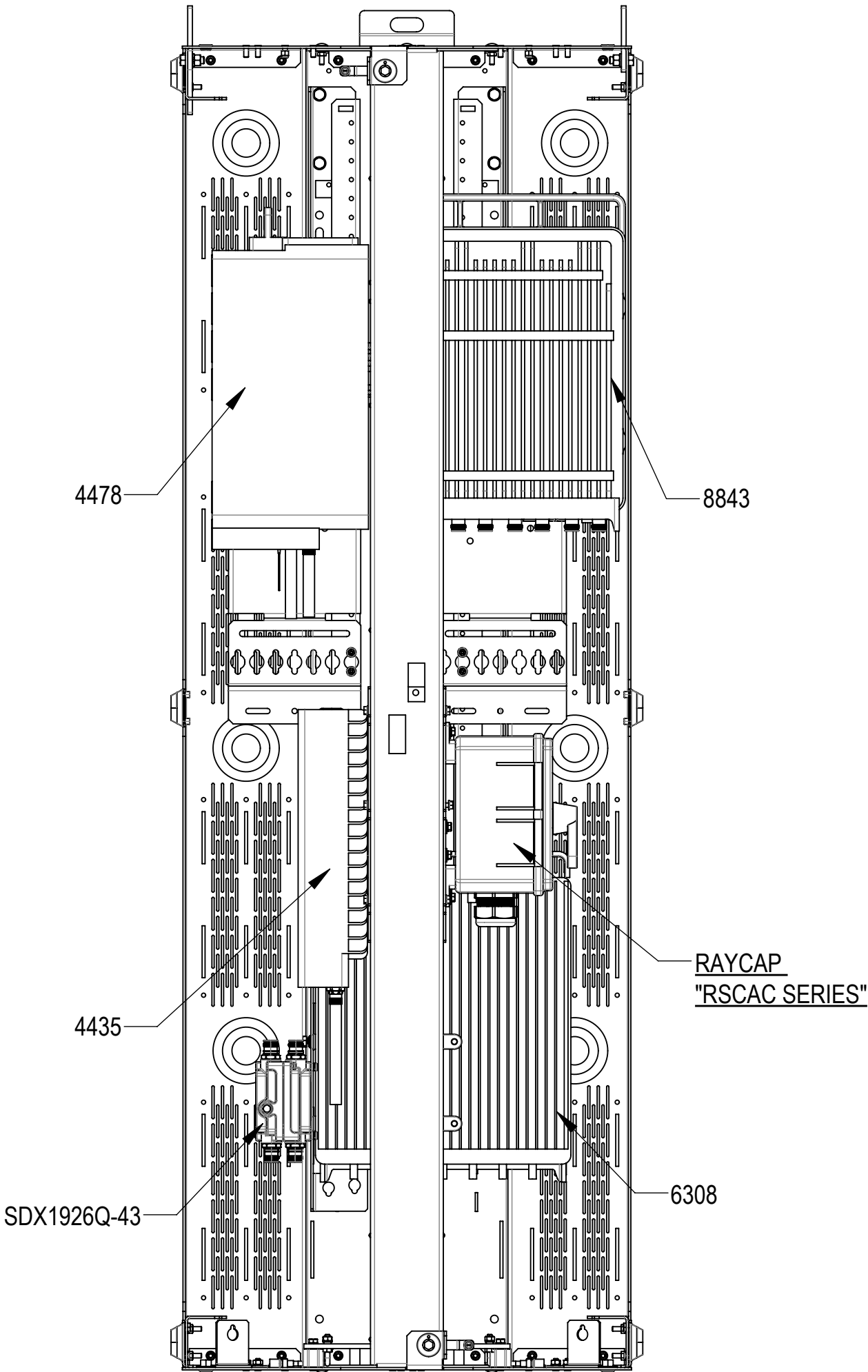
E6- 4478, 8843, 4435, PSU 6308, SDX1926Q-43 AND RSCAC SERIES



E4 CONFIG
FRONT VIEW
(DOORS NOT SHOWN FOR CLARITY)



E5 CONFIG
FRONT VIEW
(DOORS NOT SHOWN FOR CLARITY)



E6 CONFIG
FRONT VIEW
(DOORS NOT SHOWN FOR CLARITY)

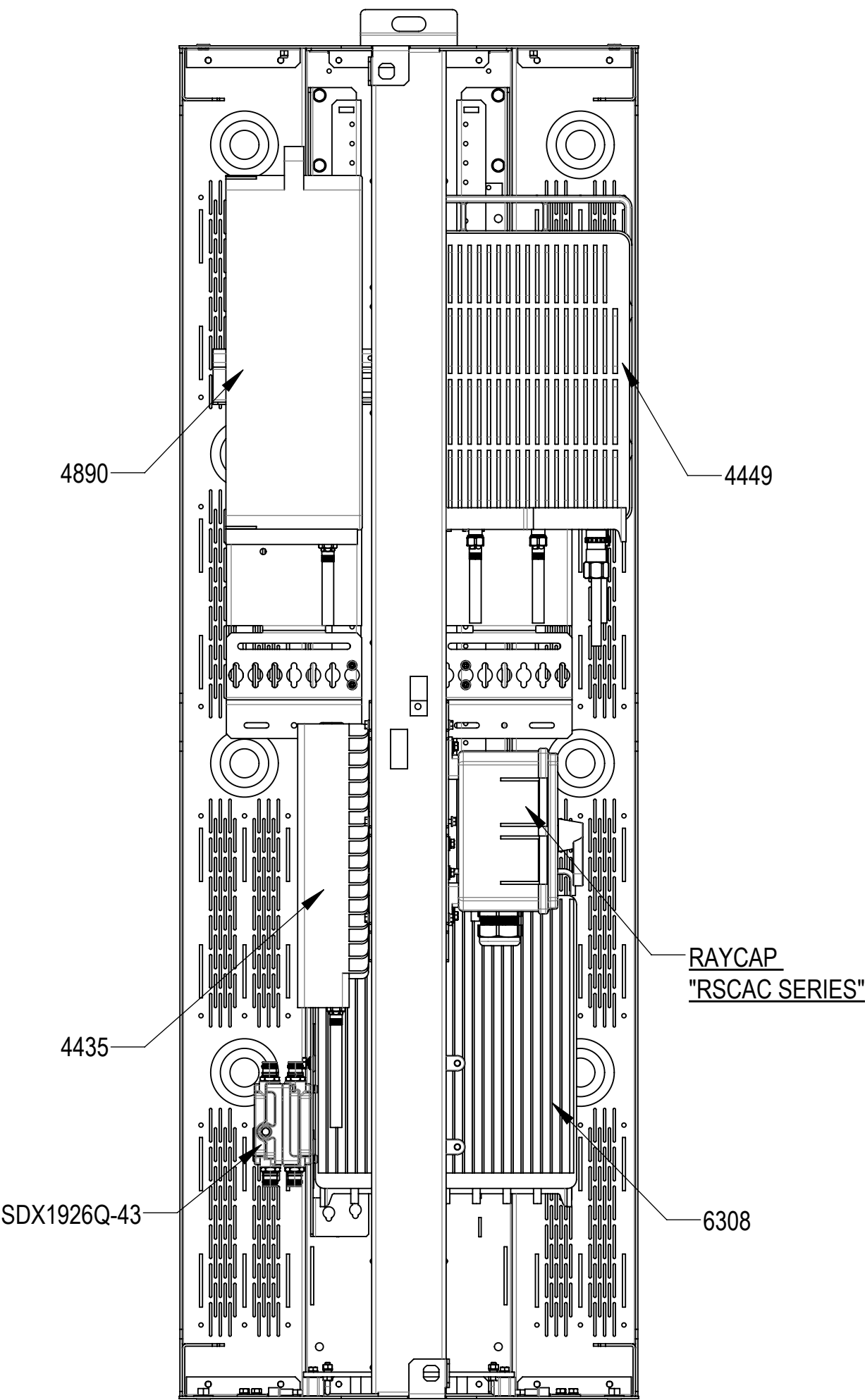
Installation Instructions



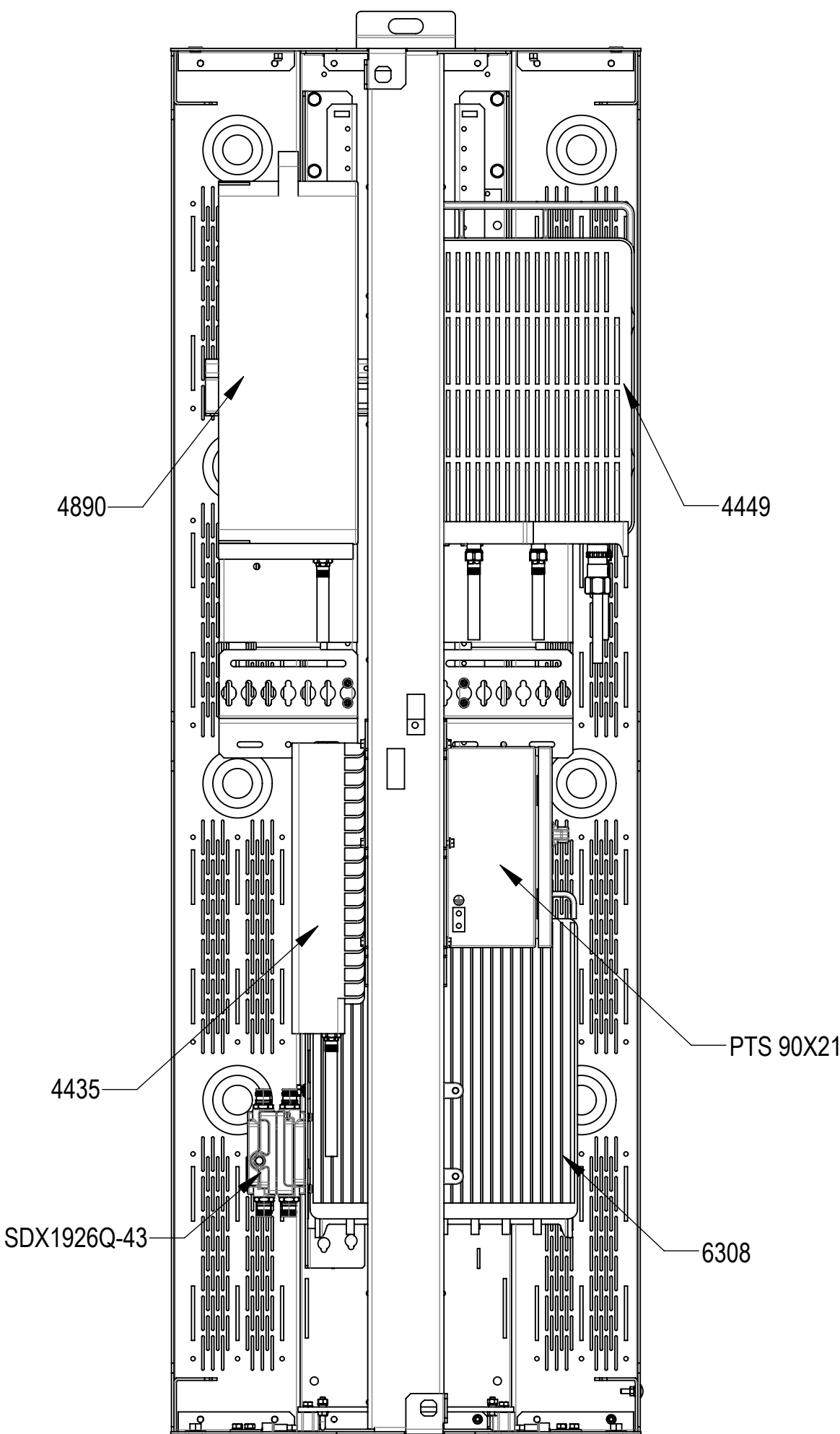
E7- 4449, 4890, 4435, PSU 6308, SDX1926Q-43 AND RSCAC SERIES

E8- 4449, 4890, 4435, PSU 6308, SDX1926Q-43 AND PTS 90X21

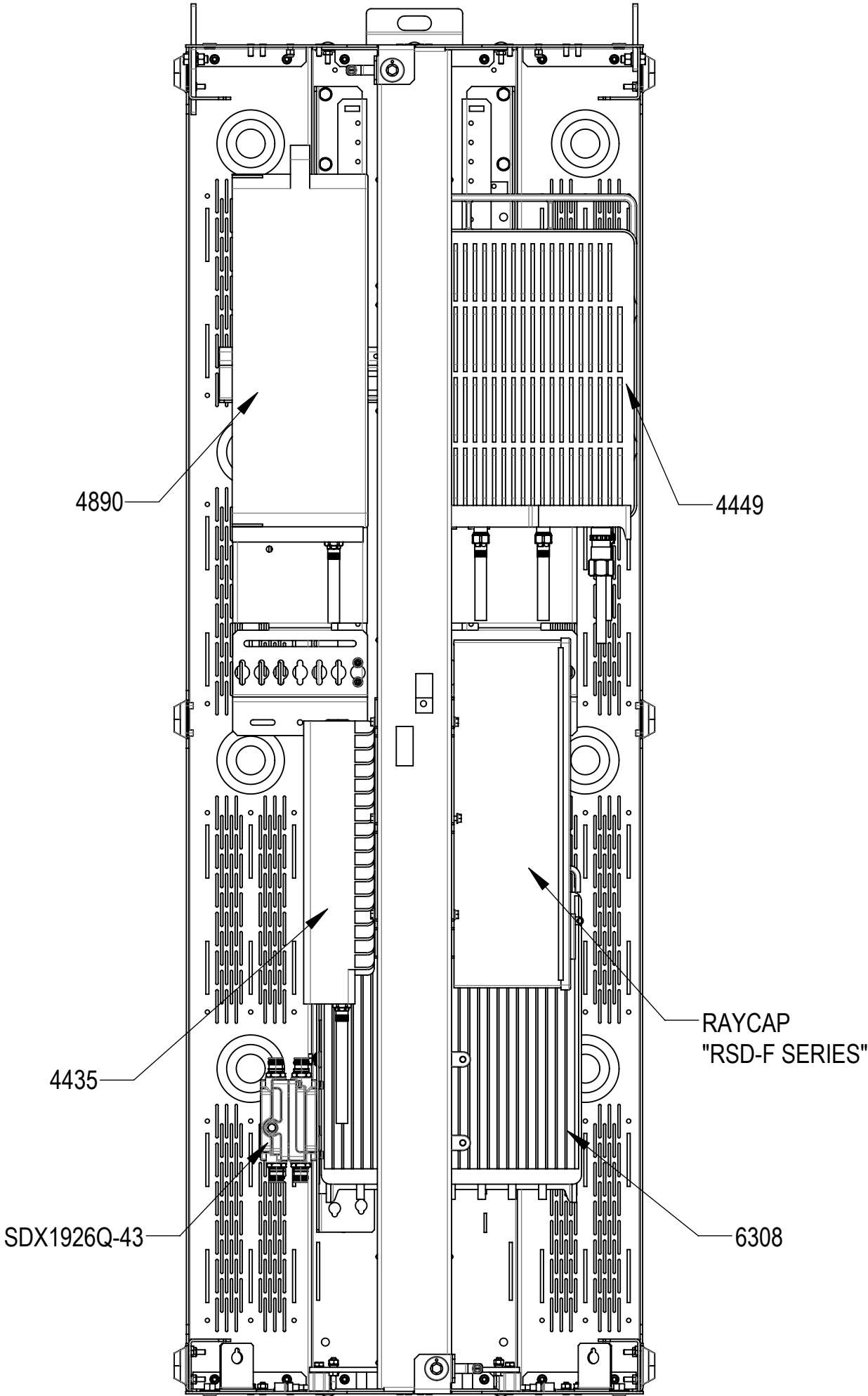
E9- 4449, 4890, 4435, PSU 6308, SDX1926Q-43 AND RSD-F SERIES



E7 CONFIG
FRONT VIEW
(DOORS NOT SHOWN FOR CLARITY)



E8 CONFIG
FRONT VIEW
(DOORS NOT SHOWN FOR CLARITY)



E9 CONFIG
FRONT VIEW
(DOORS NOT SHOWN FOR CLARITY)