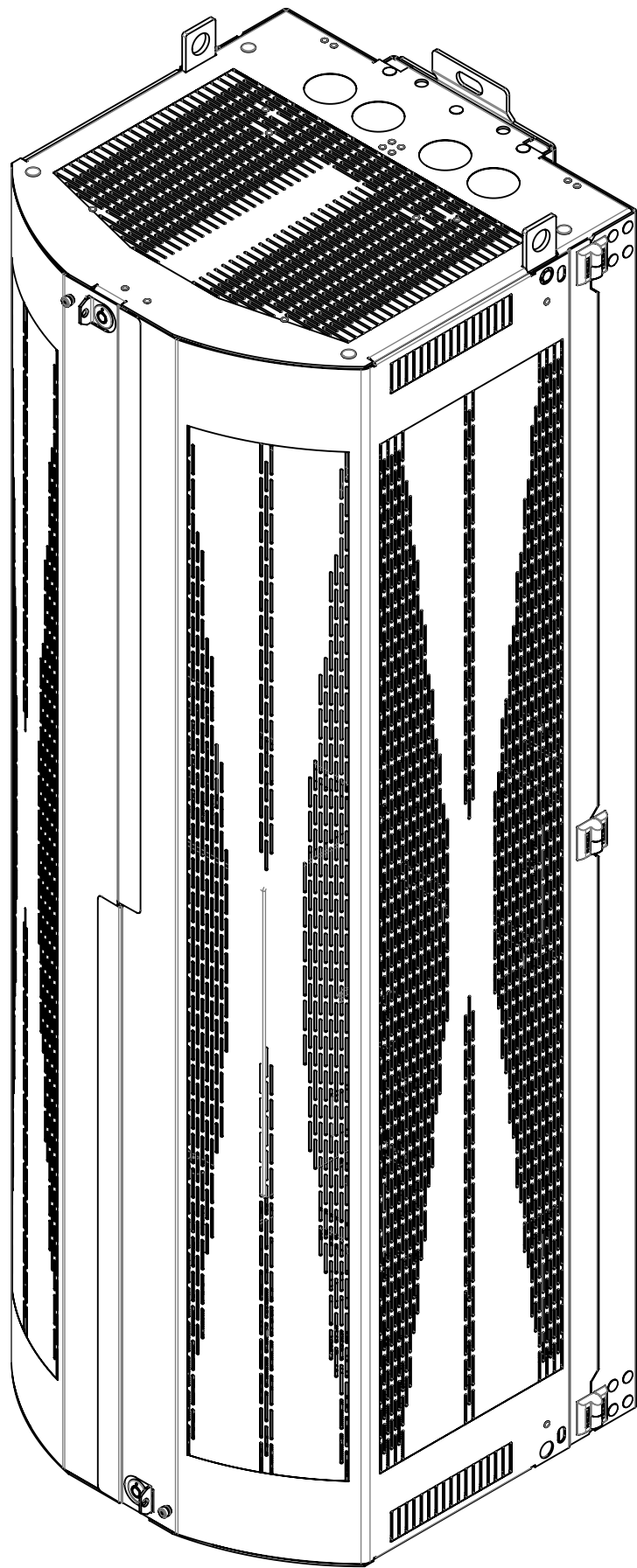


860252485-E002-INSTALL INSTALLATION INSTRUCTION

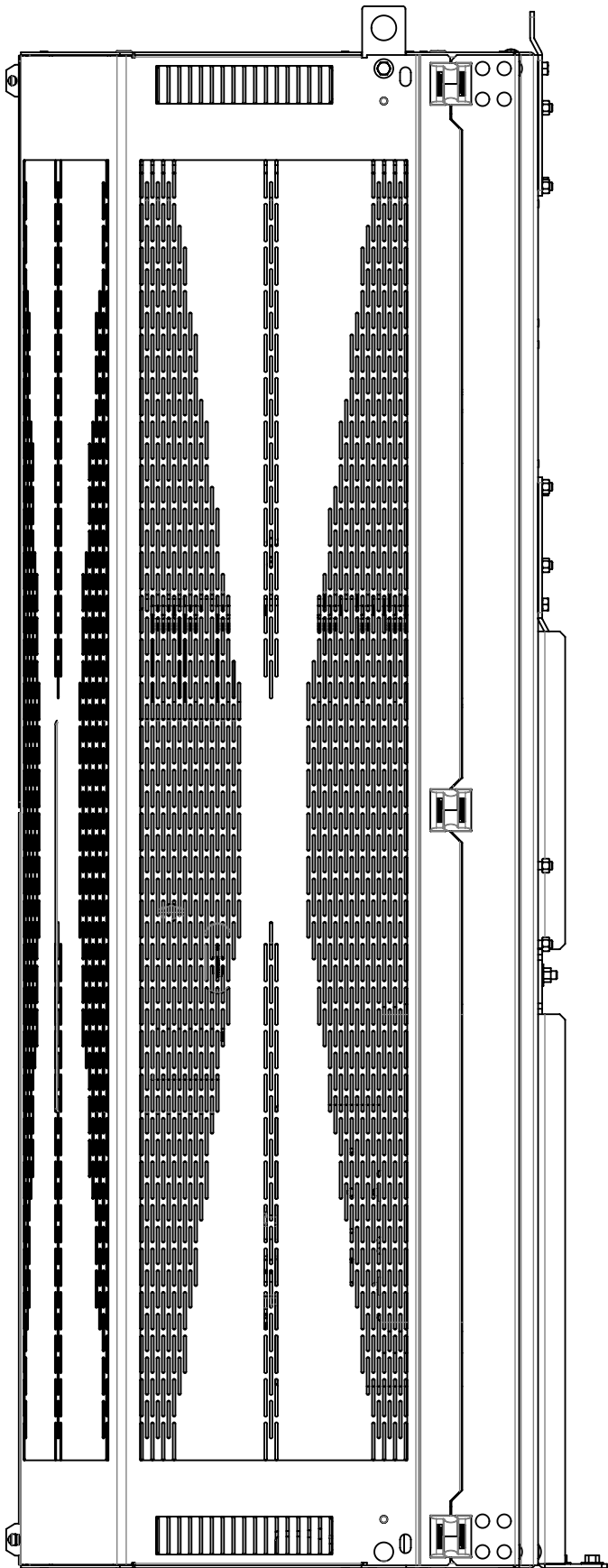
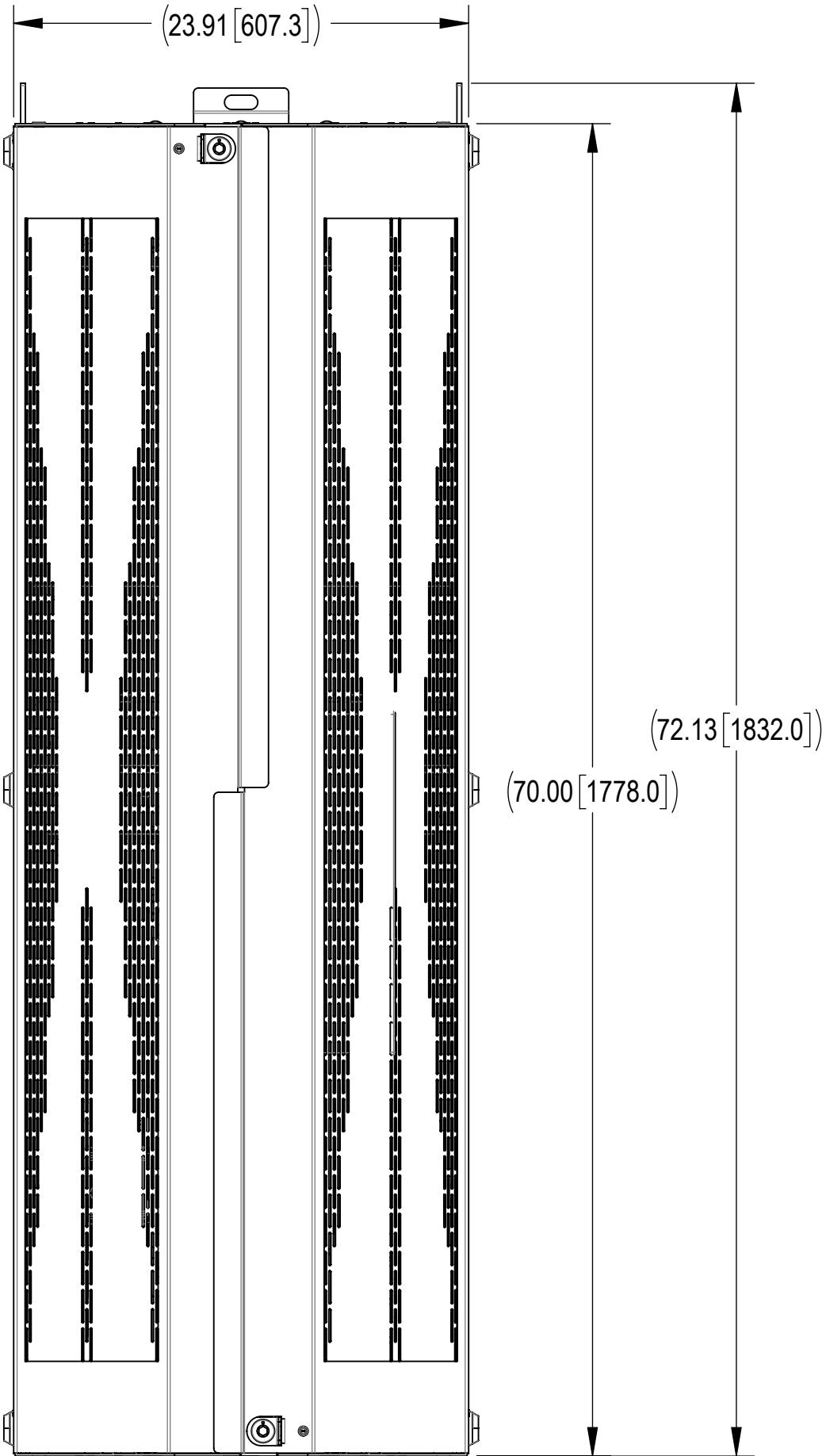
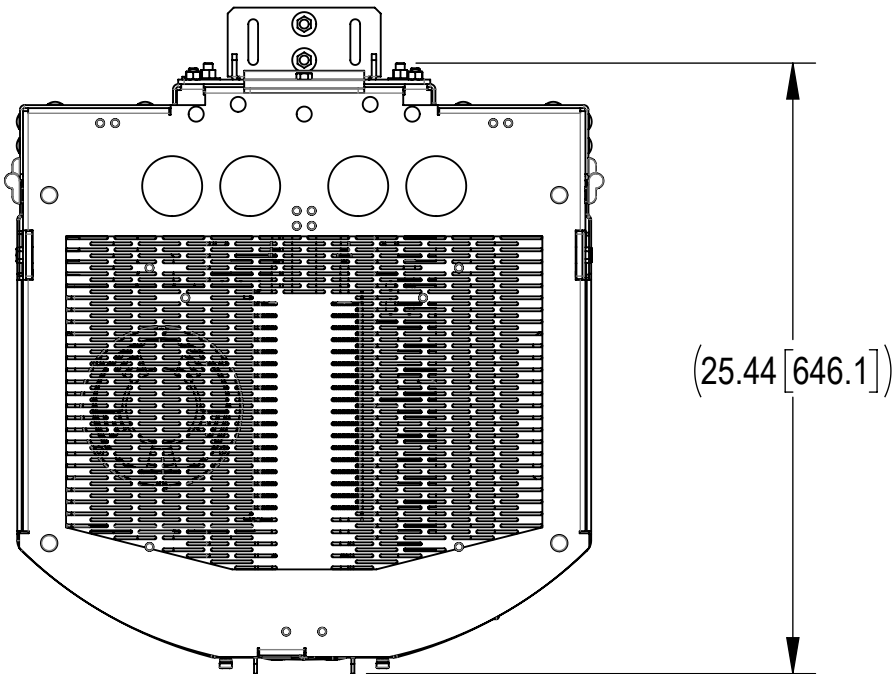
METRO BRKS ERC CONFIG 2 HCRE



REVISIONS			
REV.	DESCRIPTION	DATE	APPROVED
A	INITIAL RELEASE	MS1288 26MAR25	LX1002 50101974AMO

This table show the evolution and history of document from initial to current version.

Further information regarding ANDREW's commitment can be found at <https://www.andrew.com/sustainability/>.
Visit our website or contact your local ANDREW representative for more information.
This product is covered by one or more U.S. patents or their foreign equivalents. For patents, see www.adwpat.com.

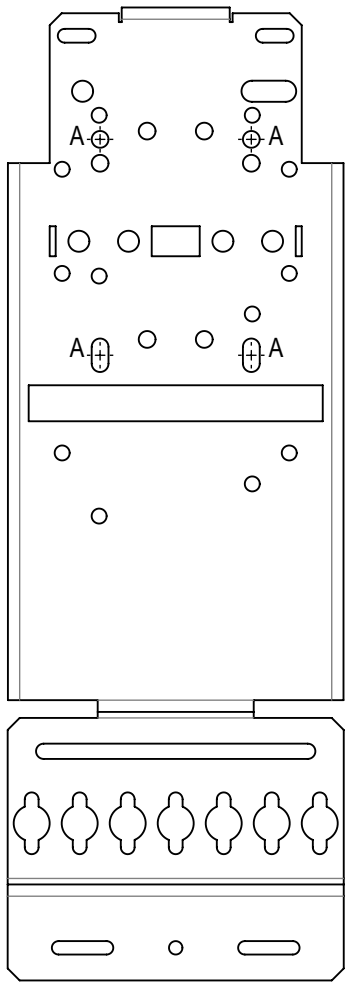


- 1.0 GENERAL NOTES
- 1.1 ALL METRIC DIMENSIONS ARE IN BRACKETS [X.X]
- 2.0 DESIGN NOTES
- 3.0 MANUFACTURING/SPECIAL REQUIREMENTS
- 3.1 TIGHTEN HARDWARE, TORQUE VALUE ARE SHOWN BELOW AS REFERENCE,
M6: TORQUE 40.0 IN-LB OR 4.5 N-M (W/ CLIP NUT)
M6: TORQUE 46.0 IN-LB OR 5.2 N-M (W/ THREADED CAST AL)
M6: TORQUE 75.0 IN-LB OR 8.5 N-M (W/ STEEL NUT)
M8: TORQUE 6.6 FT-LB OR 9.0 N-M (W/ THREADED CAST AL)
1/4-20: TORQUE 4.8 FT-LB OR 6.6 N-M
3/8-16: TORQUE 19.6 FT-LB OR 26.6 N-M
- 3.2 CONFIGURATIONS AND QUANTITY OF EQUIPMENTS IN INSTALLATION ARE LISTED ON TABLE.
- 3.3 EQUIPMENT INSTALLATION INSTRUCTION ON PAGE 3.

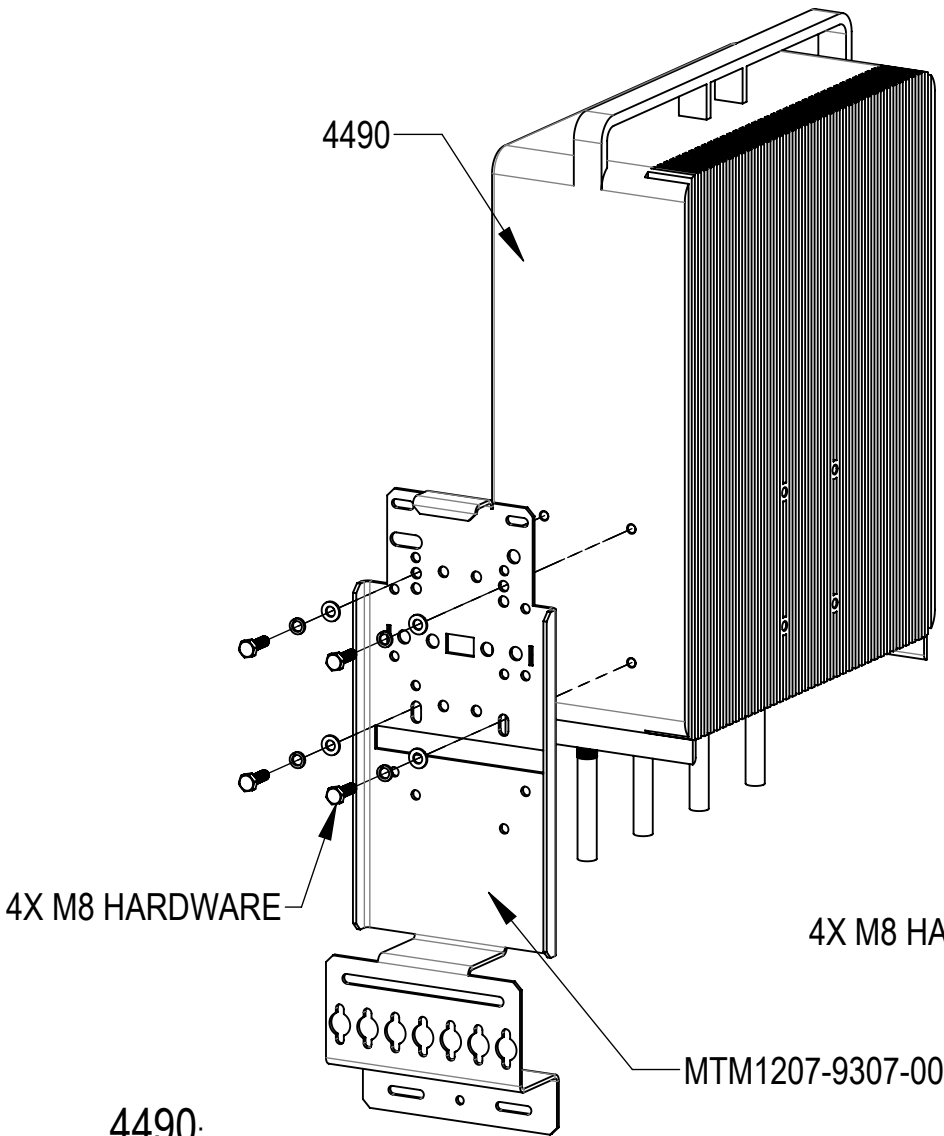
ERICSSON CONFIGURATION	3.2 APPROVED ERICSSON RADIO CONFIGURATIONS							
	4490	4890	4467	PSU 6308	QUAD DIPLEXER SDX1926Q-43	PTS 90X21	RAYCAP "RSD-F SERIES"	RAYCAP "RSCAC SERIES"
10	1	1	1	1	1	1		
11	1	1	1	1	1		1	
12	1	1	1	1	1			1

EQUIPMENT MOUNTING INSTALLATION

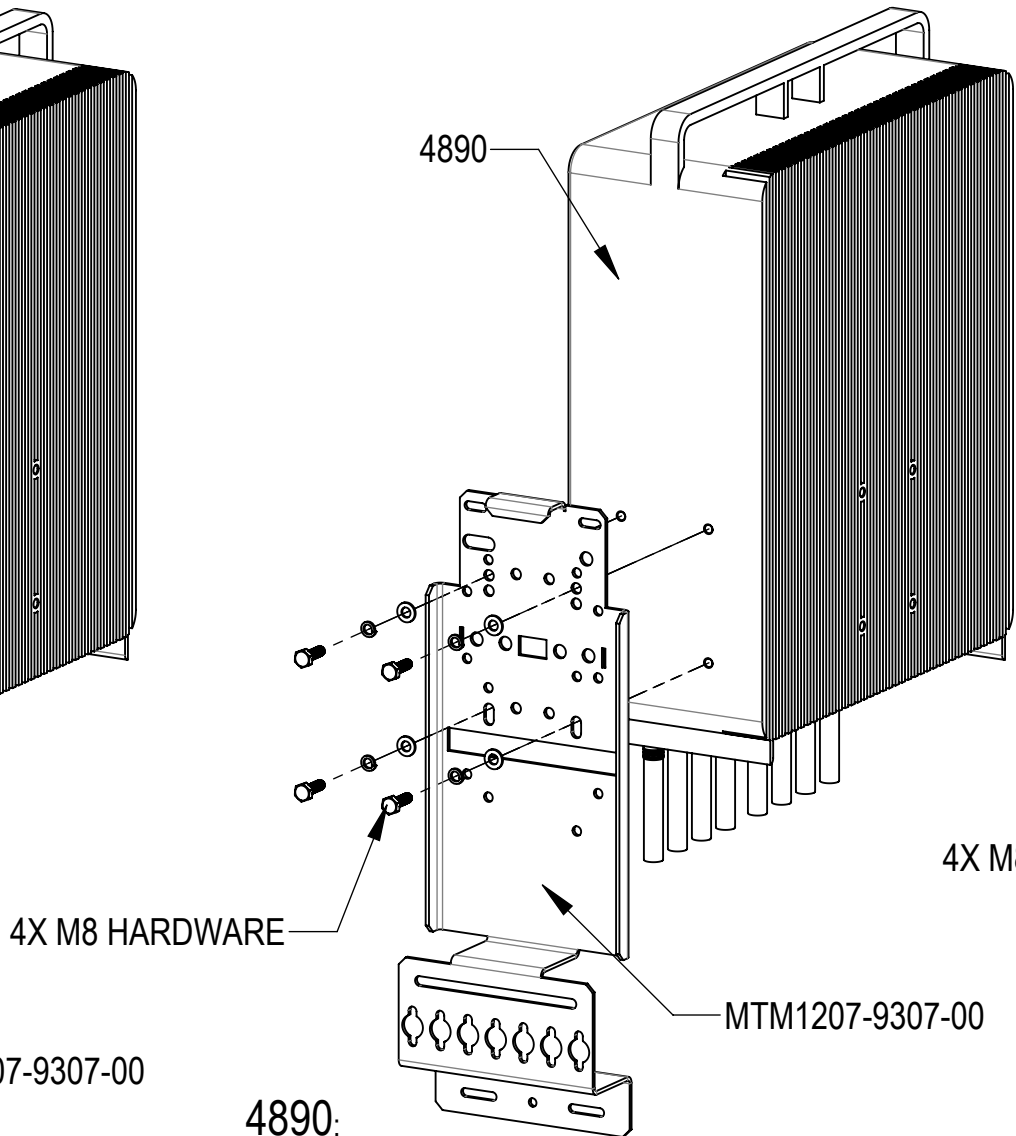
RADIO INSTALLATION
HCRE MOUNTING BRACKET
MTM1207-9307-00



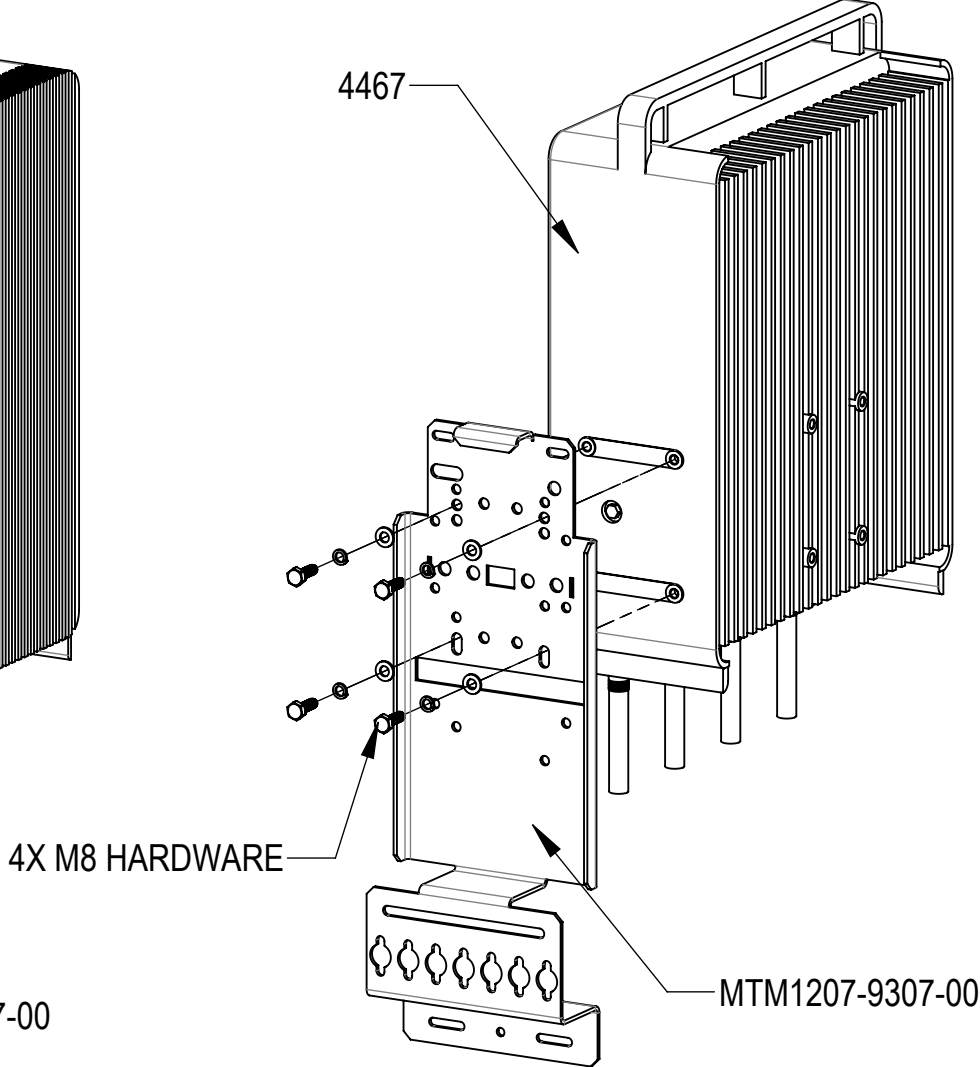
"A": 4490, 4890 & 4467



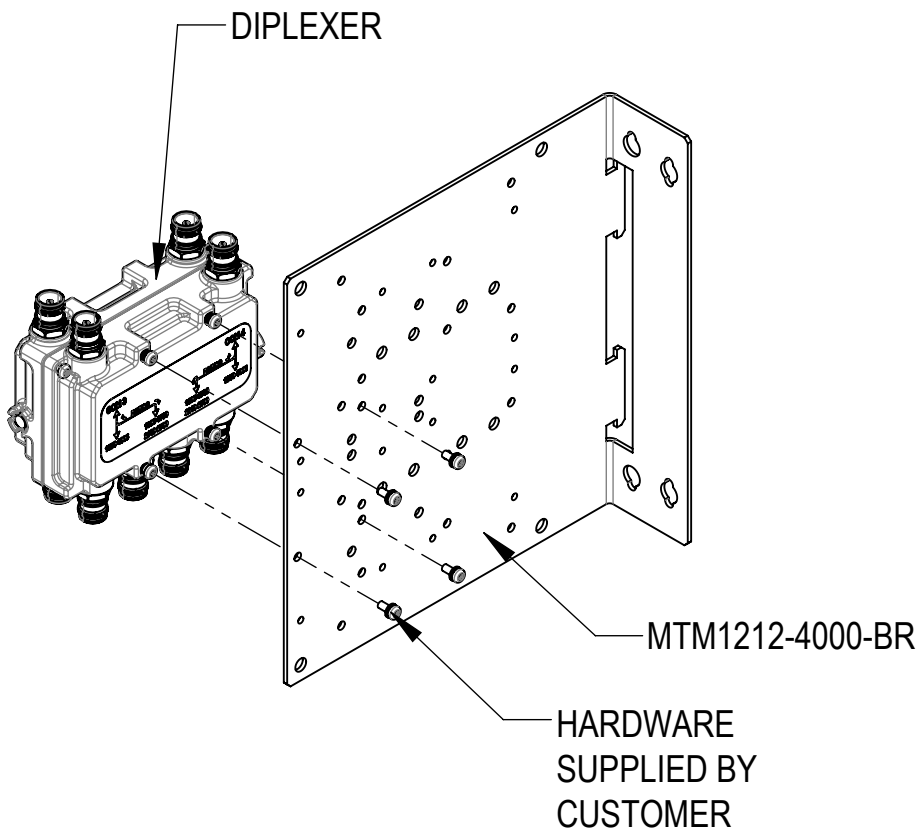
4490:
INSTALL 4490 TO THE BRACKET MTM1207-9307-00 USING 4 SETS OF M8 HEX BOLT, LOCK WASHER AND FLAT WASHER AS SHOWN



4890:
INSTALL 4890 TO THE BRACKET MTM1207-9307-00 USING 4 SETS OF M8 HEX BOLT, LOCK WASHER AND FLAT WASHER AS SHOWN

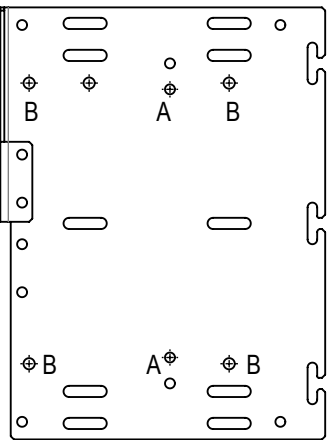


4467:
INSTALL 4467 TO THE BRACKET MTM1207-9307-00 USING 4 SETS OF M8 HEX BOLT, LOCK WASHER AND FLAT WASHER AS SHOWN

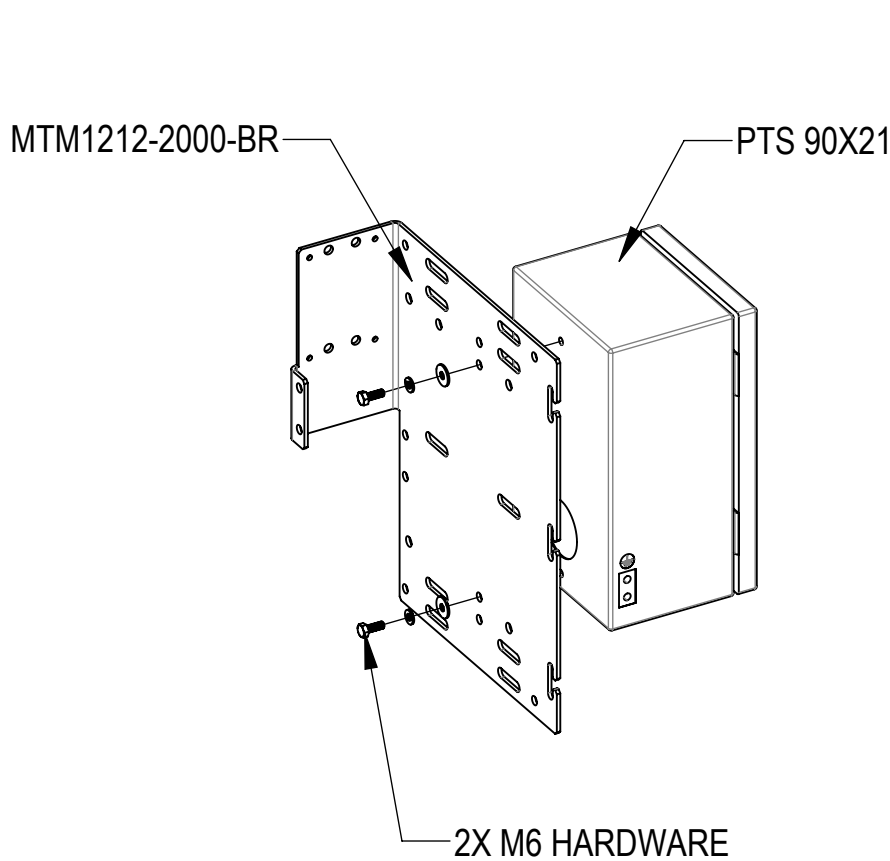


DIPLEXER:
INSTALL DIPLEXER TO THE BRACKET MTM1212-4000-BR USING 4 SETS OF M5 HEX BOLT, LOCK WASHER AND FLAT WASHER AS SHOWN

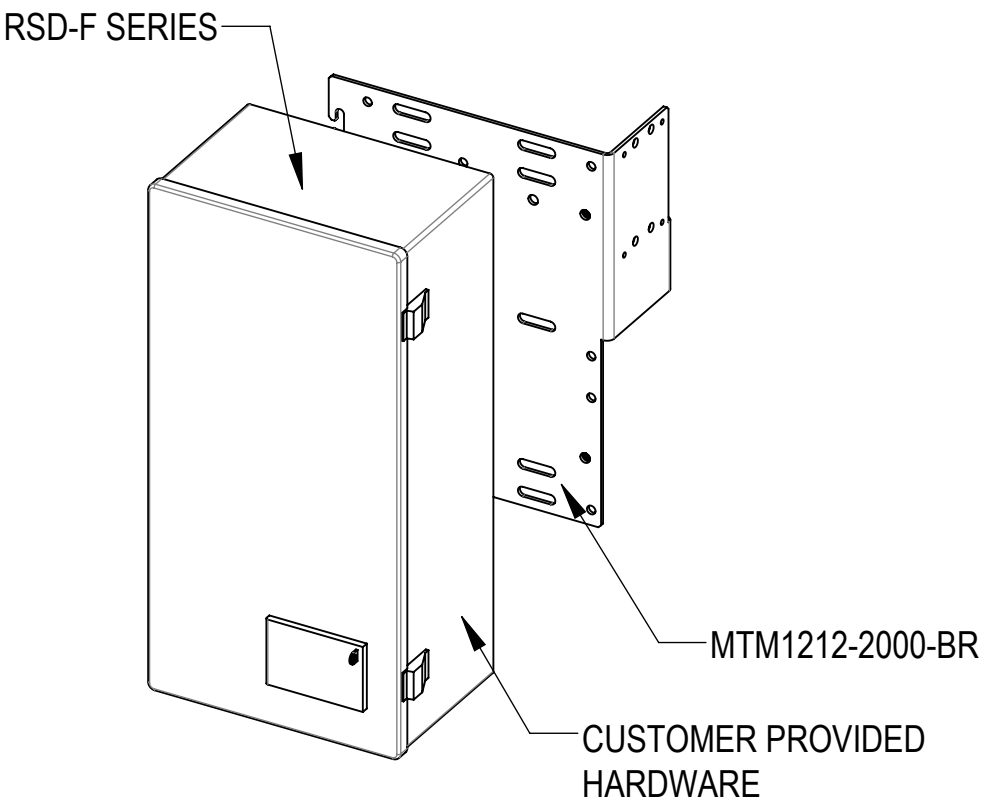
RADIO INSTALLATION
HCRE MOUNTING BRACKET
MTM1212-2000-BR



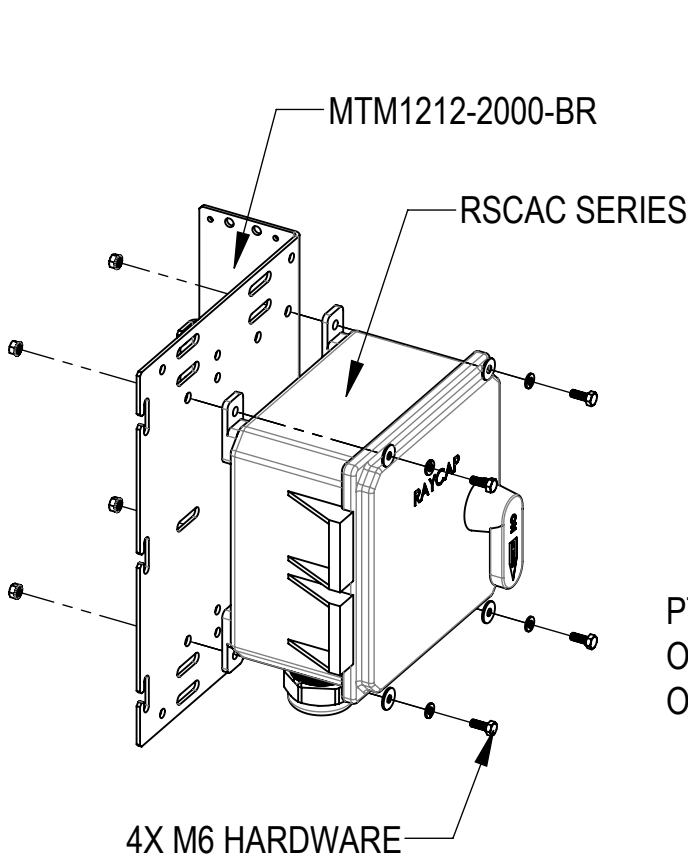
"A": PTS 90X21
"B": RSCAC SERIES



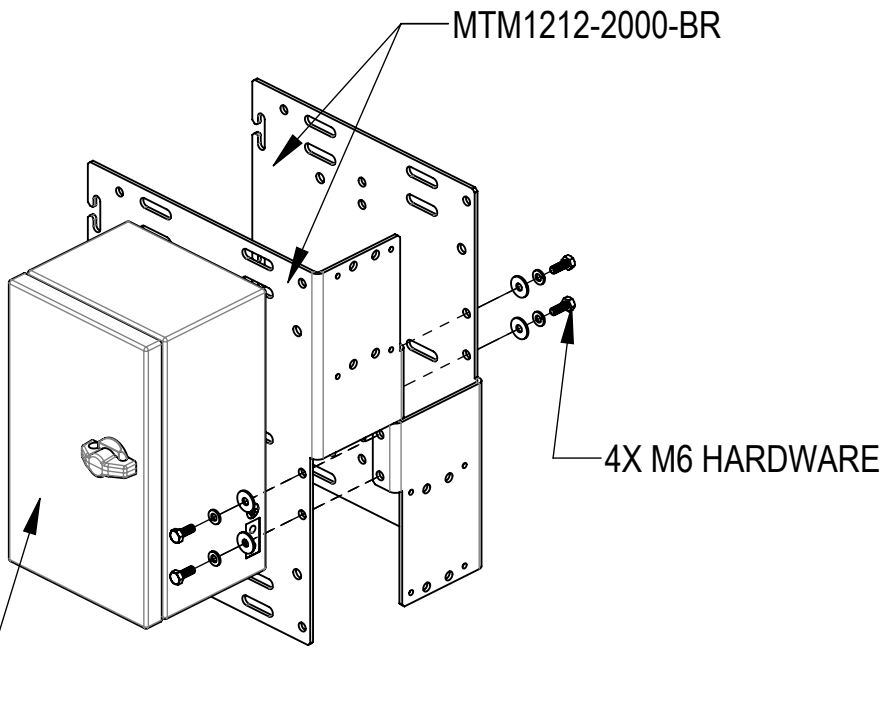
PTS 90X21:
INSTALL PTS 90X21 TO THE BRACKET MTM1212-2000-BR USING 2 SETS OF M6 HEX BOLT, LOCK WASHER AND FLAT WASHER AS SHOWN



RSD-F SERIES:
INSTALL RSD-F SERIES TO THE BRACKET MTM1212-2000-BR USING 4 SETS OF M6 HEX BOLT, LOCK WASHER AND FLAT WASHER AS SHOWN

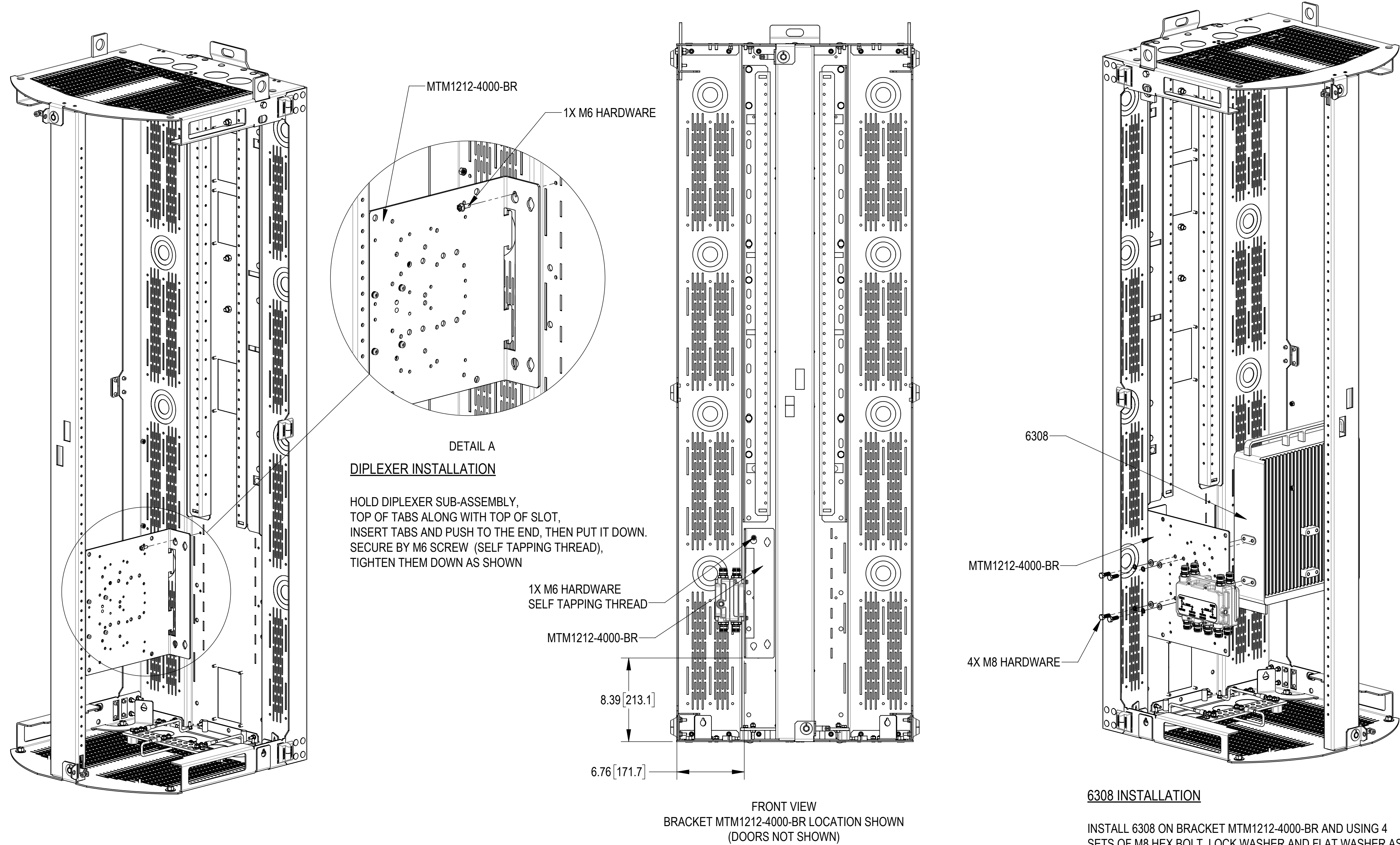


RSCAC SERIES:
INSTALL RSCAC SERIES TO THE BRACKET MTM1212-2000-BR USING 4 SETS OF M6 HEX BOLT, LOCK WASHER AND FLAT WASHER AS SHOWN

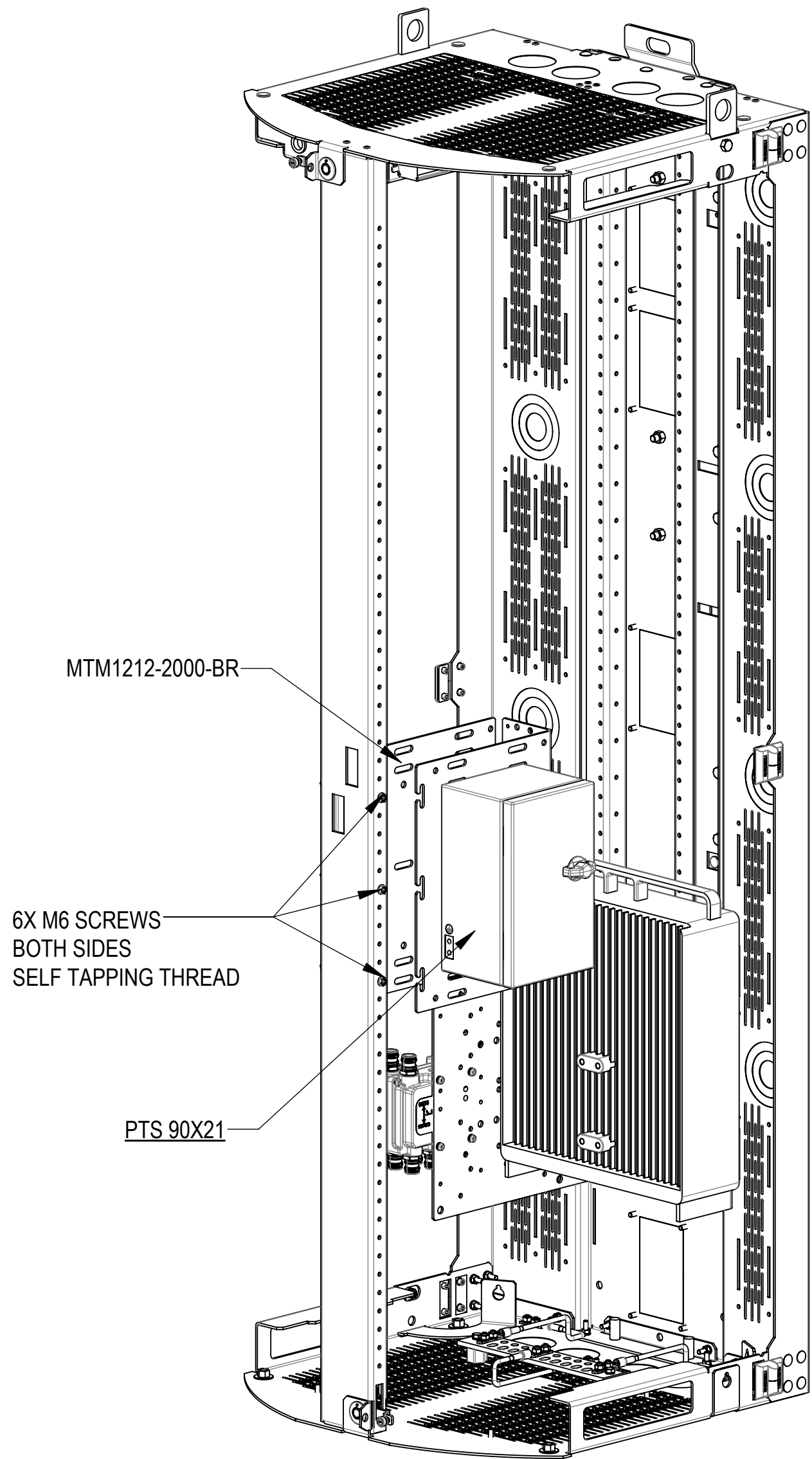


BRACKETS MTM1212-2000-BR:
INSTALL PTS 90X21 OR RSD-F SERIES OR RSCAC SERIES SUB-ASSEMBLY TO THE BRACKET MTM1212-2000-BR USING 4 SETS OF M6 HEX BOLT, LOCK WASHER AND FLAT WASHER AS SHOWN

DIPLEXER AND PSU 6308 INSTALLATION

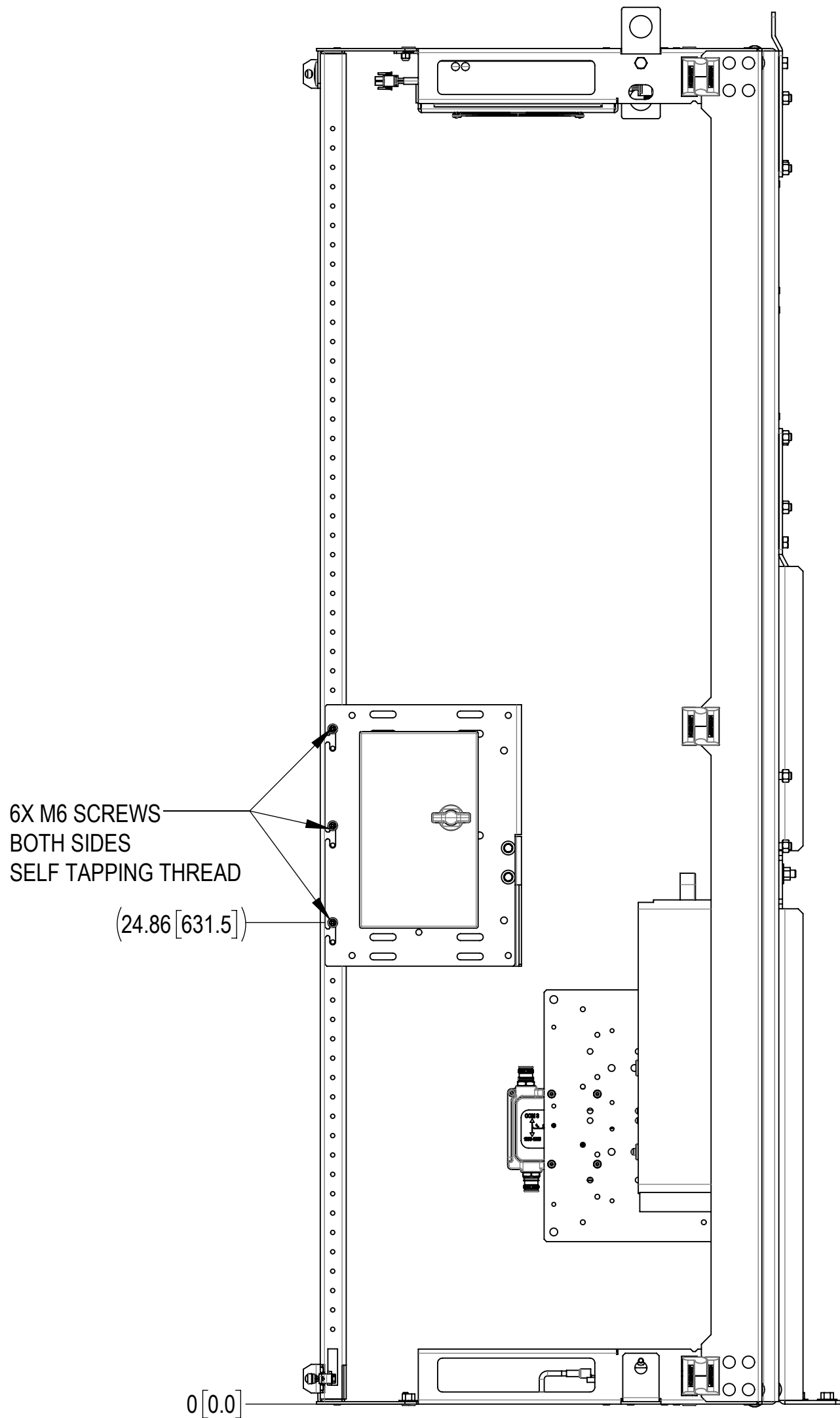


PTS 90X21 INSTALLATION



PTS 90X21 INSTALLATION

HANG PTS 90X21 SUB-ASSEMBLY ON THE M6 SCREWS (SELF TAPPING THREAD), TIGHTEN THEM DOWN AS SHOWN

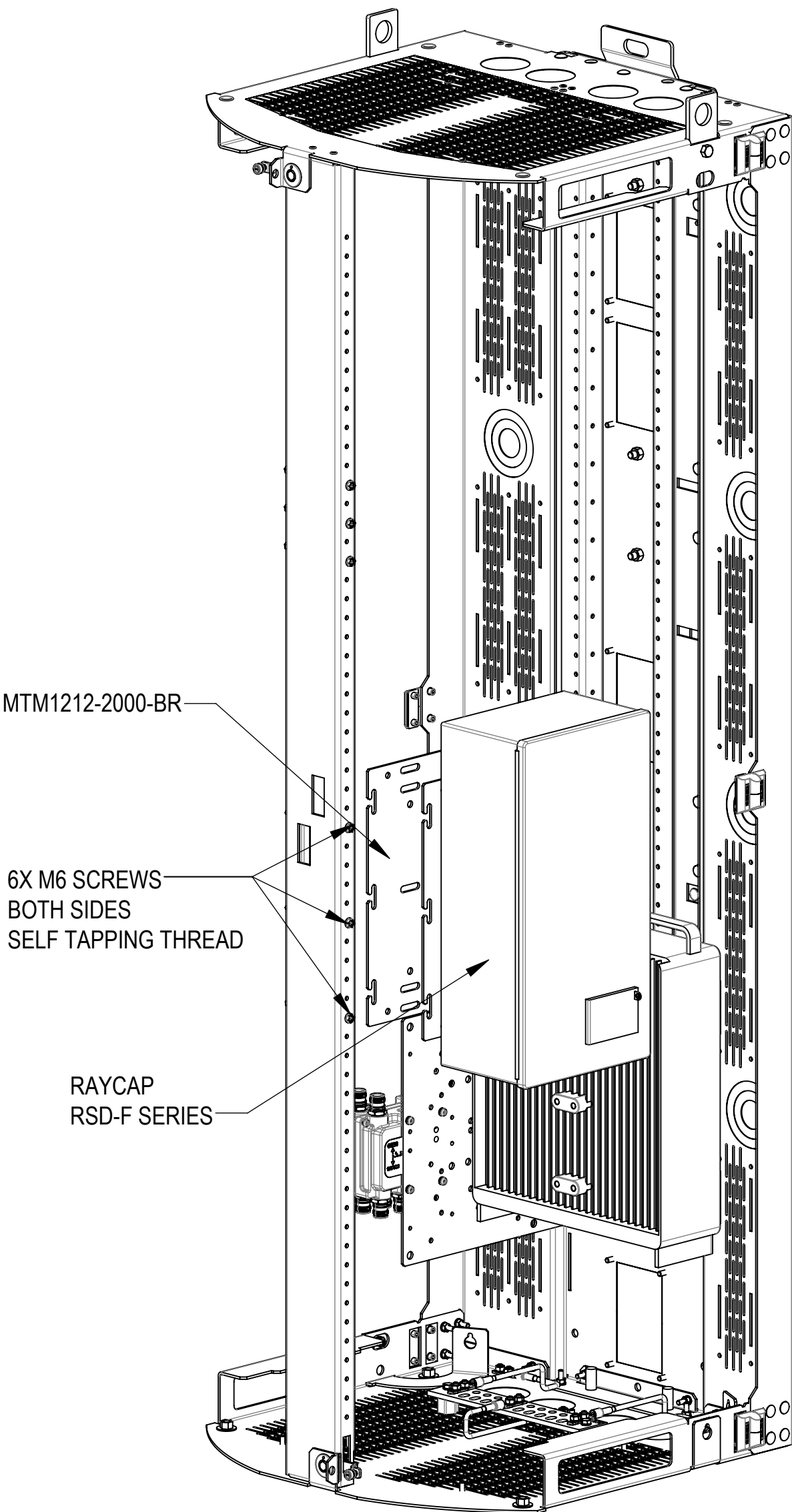


RIGHT VIEW
M6 SCREWS LOCATION SHOWN
(DOORS NOT SHOWN)

Installation Instructions

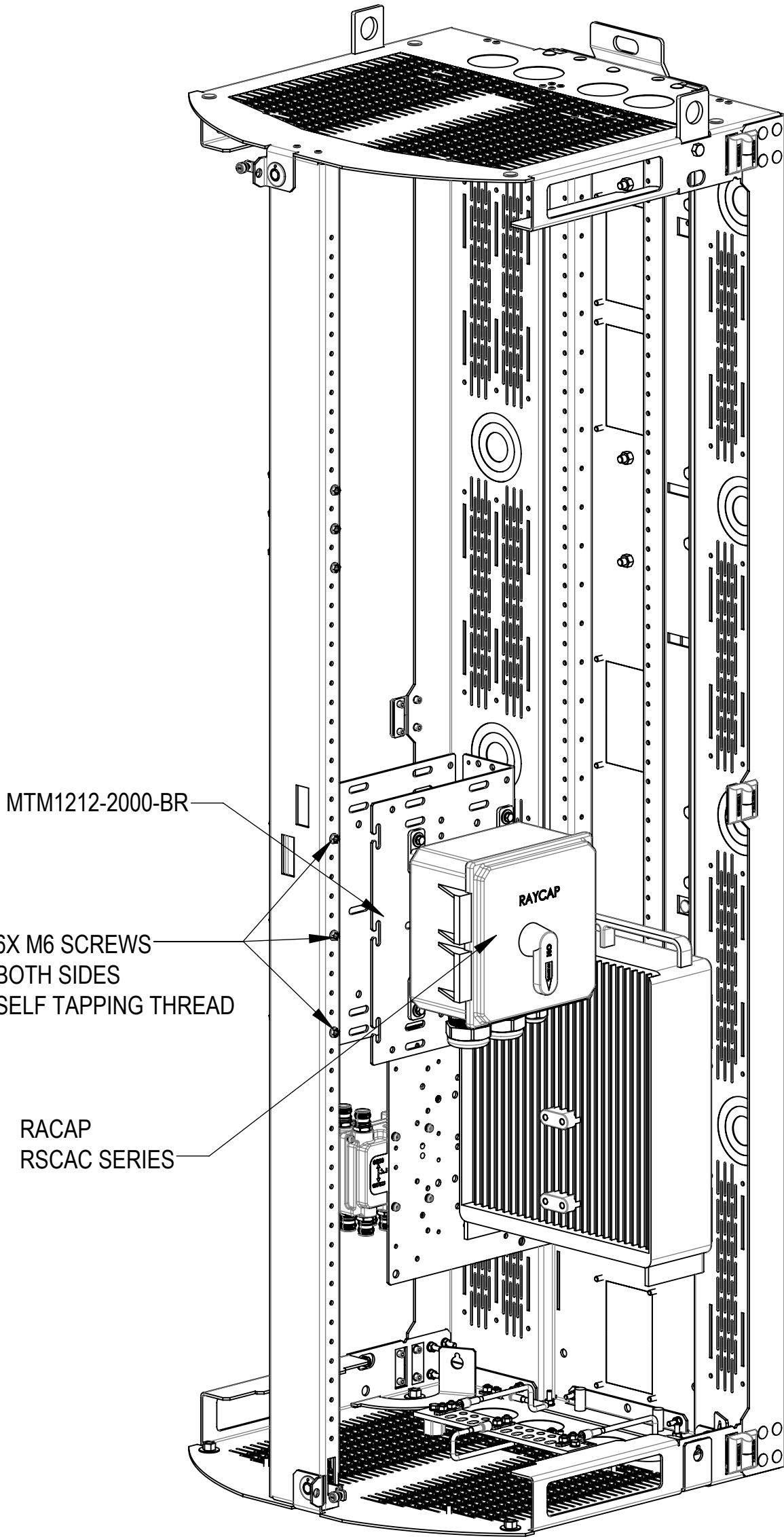


RSD-F SERIES, RSCAC SERIES AND 860252485-AMK-001 INSTALLATION



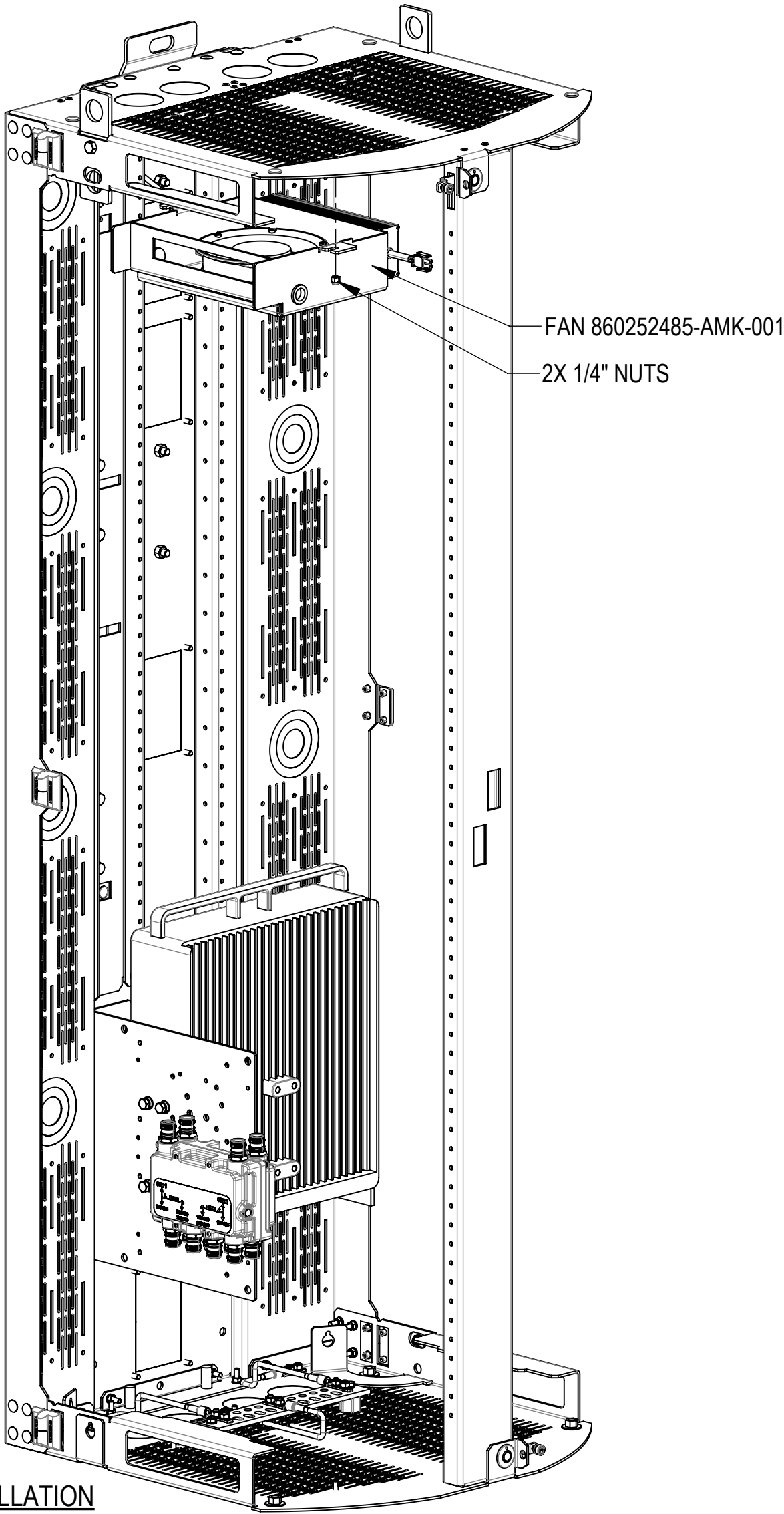
RSD-F SERIES INSTALLATION

HANG RSD-F SERIES SUB-ASSEMBLY ON THE M6 SCREWS (SELF TAPPING THREAD), TIGHTEN THEM DOWN AS SHOWN



RSCAC SERIES INSTALLATION

HANG RSCAC SERIES SUB-ASSEMBLY ON THE M6 SCREWS (SELF TAPPING THREAD), TIGHTEN THEM DOWN AS SHOWN



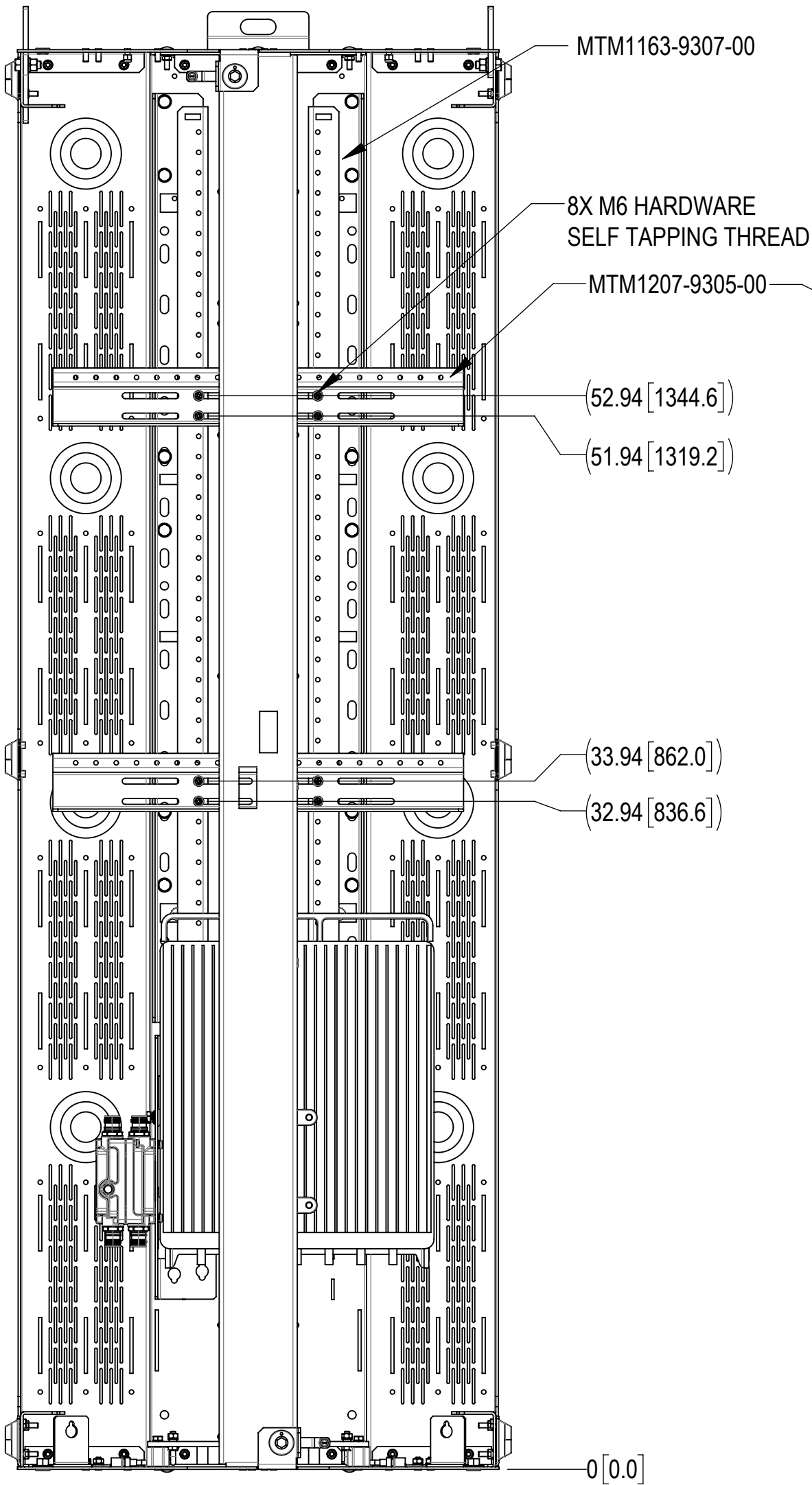
860252485-AMK-001 INSTALLATION

INSTALL FAN 860252485-AMK-001 TO MAIN FRAME USING 2EA 1/4" NUTS AS SHOWN. YELLOW COLOR IS NEUTRAL WIRE(N),BLACK IS LIVE WIRE (L),GREEN IS EARTH WIRE(E), THE REMAINING WIRE IS THE SENSING WIRE.THE DETECTOR HEAD OF SENSOR IS TO BE FIXED ABOUT 0.75" UNDER A HIGH POWER OR HOTTEST RRU.AC CABLE IS FIXED ALONG THE INNER WALL OF THE ENCLOSURE AND "N/L/E" ARE CONNECTED TO A FREE BREAKER IN THE POWER BOX/LOAD CENTER,MINIMUM BREAKER SIZE IS 1.2 AMPS.

Installation Instructions

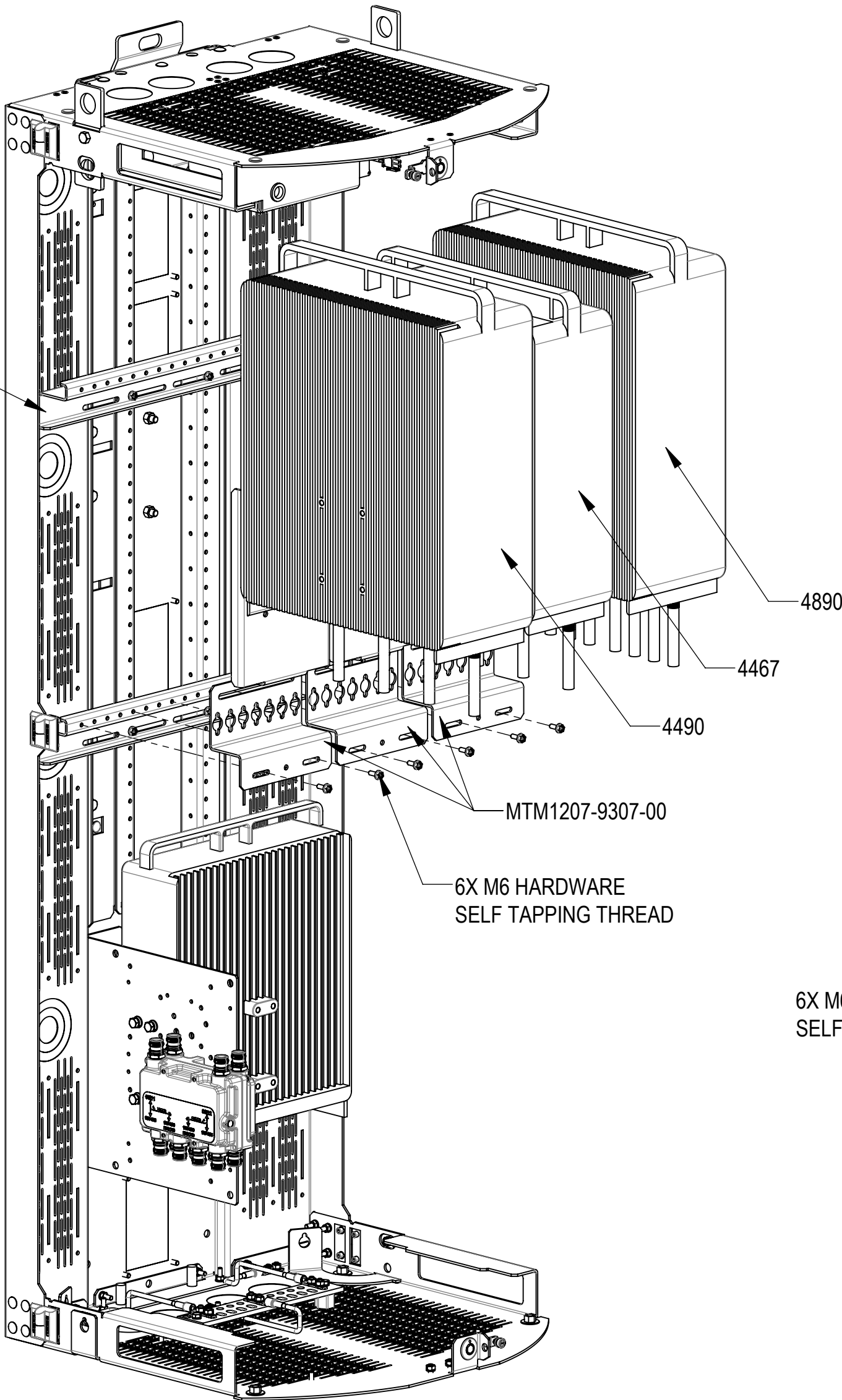


4490, 4467 AND 4890 INSTALLATION



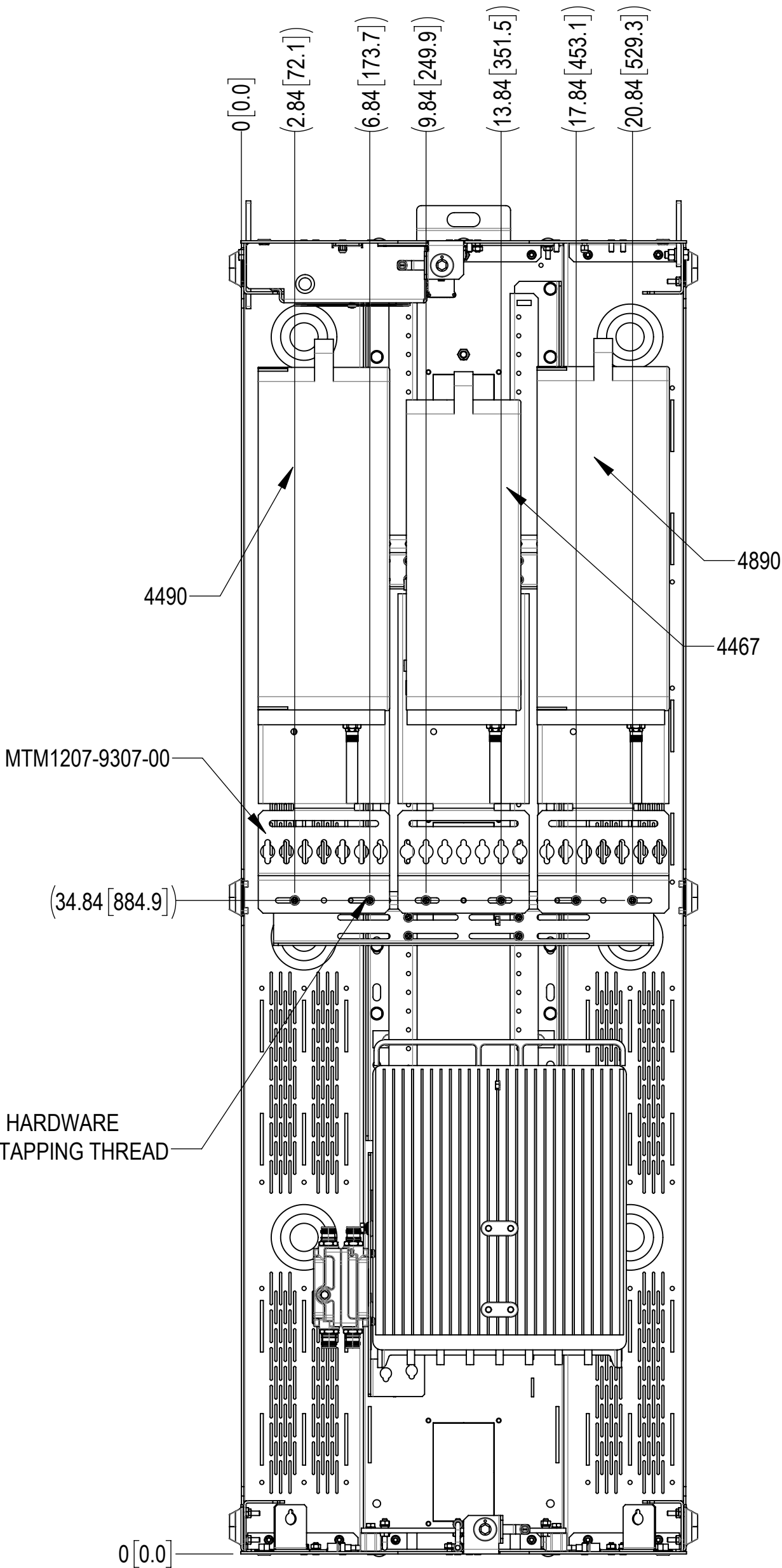
2EA MTM1207-9305-00 INSTALLATION

INSTALL 2EA BRACKET MTM1207-9305-00 TO MTM1163-9307-00 USING 8 SETS OF M6 SCREWS (SELF TAPPING THREAD), TIGHTEN THEM DOWN AS SHOWN



4490, 4890 AND 4467 INSTALLATION

HANG 4490 4467 & 4890 SUB-ASSEMBLY ON THE MTM1207-9305-00 AND SECURE BY 6 SETS OF M6 SCREWS (SELF TAPPING THREAD), TIGHTEN THEM DOWN AS SHOWN (FRONT BRACKETB STIFFENER NOT SHOWN)



FRONT VIEW
BRACKET MTM1207-9307-00 LOCATION SHOWN
(DOORS NOT SHOWN)

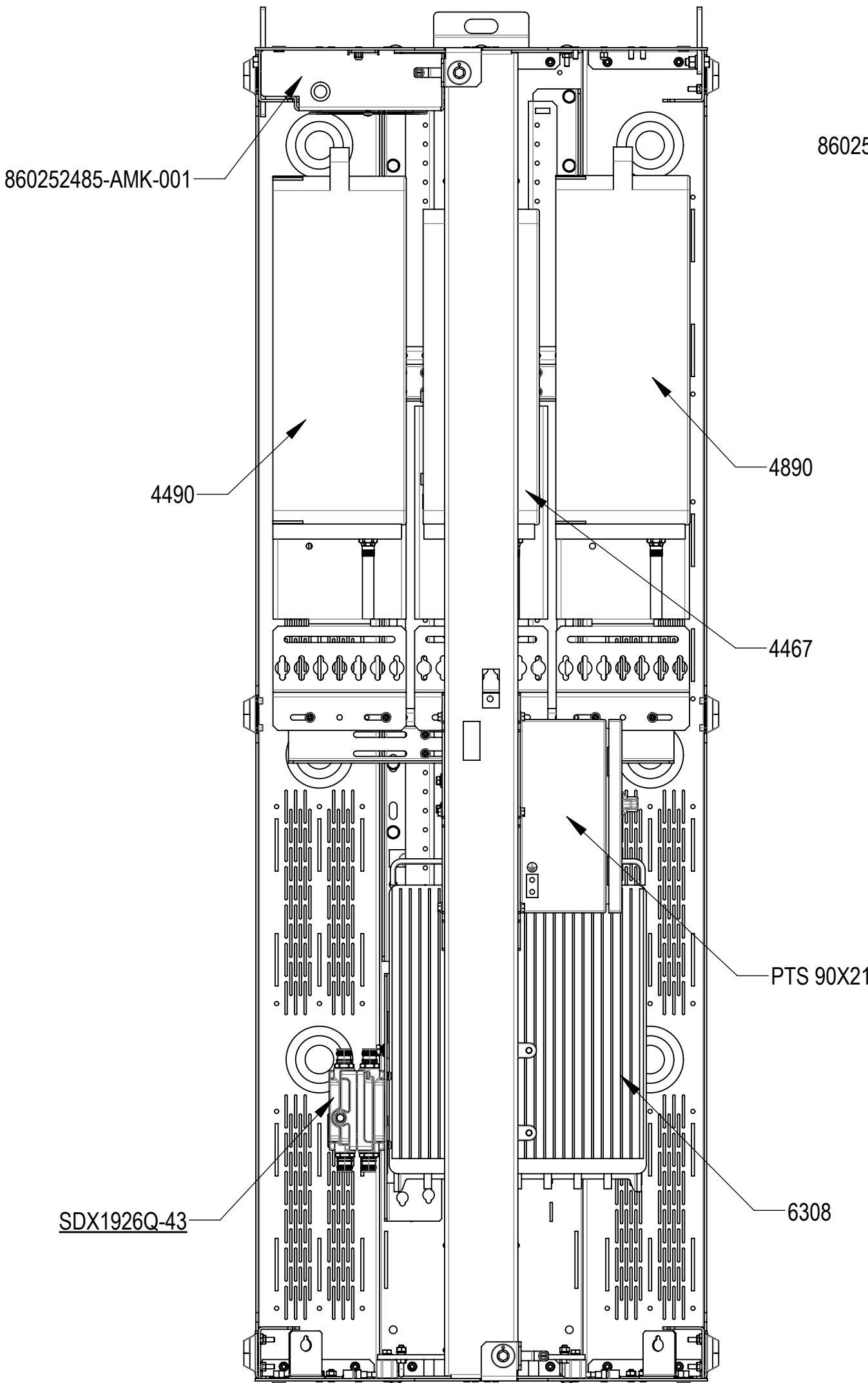
Installation Instructions



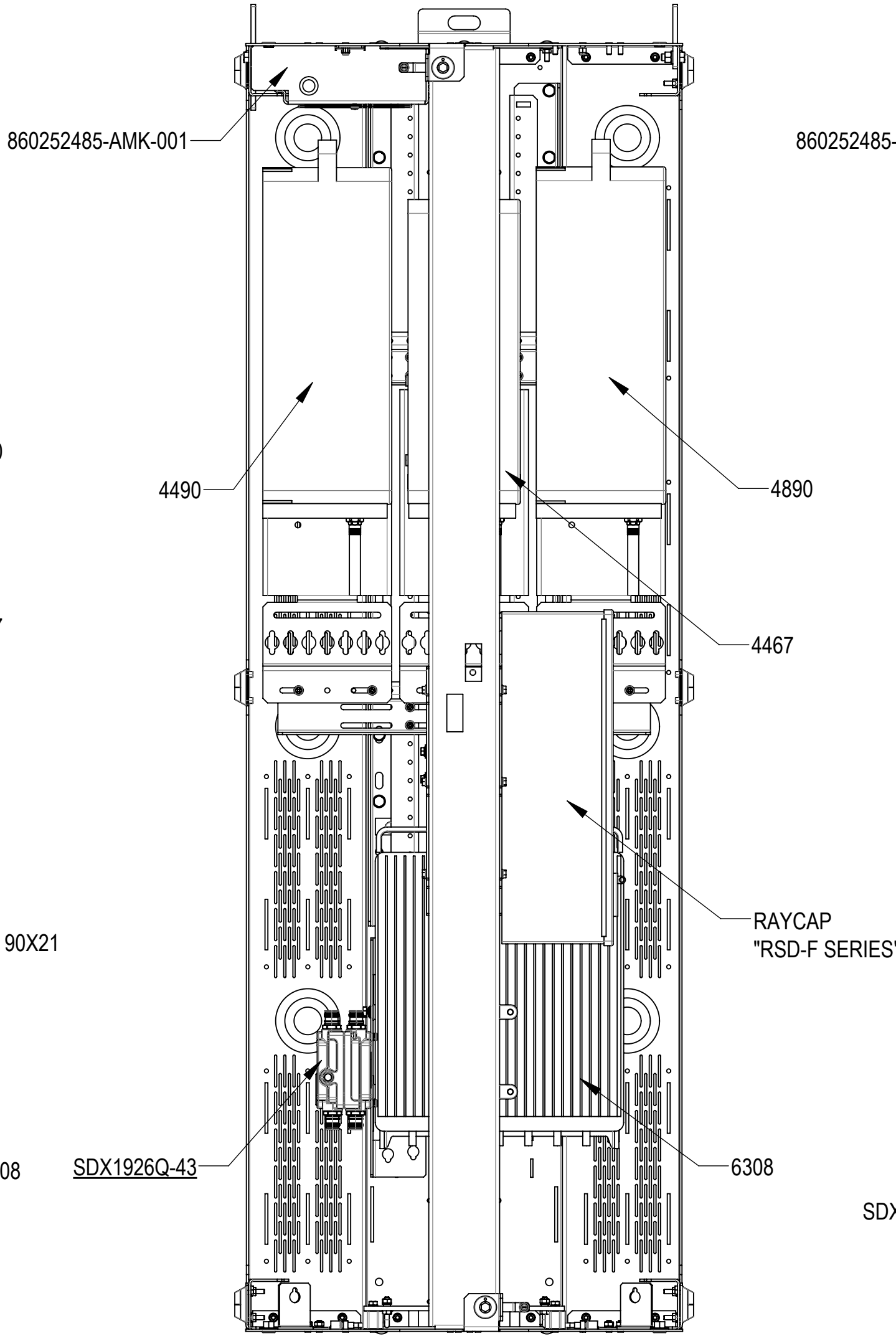
E10- 4490, 4890, 4467, PSU 6308, SDX1926Q-43, PTS 90X21 AND 860252485-AMK-001

E11- 4490, 4890, 4467, PSU 6308, SDX1926Q-43, RSD-F SERIES AND 860252485-AMK-001

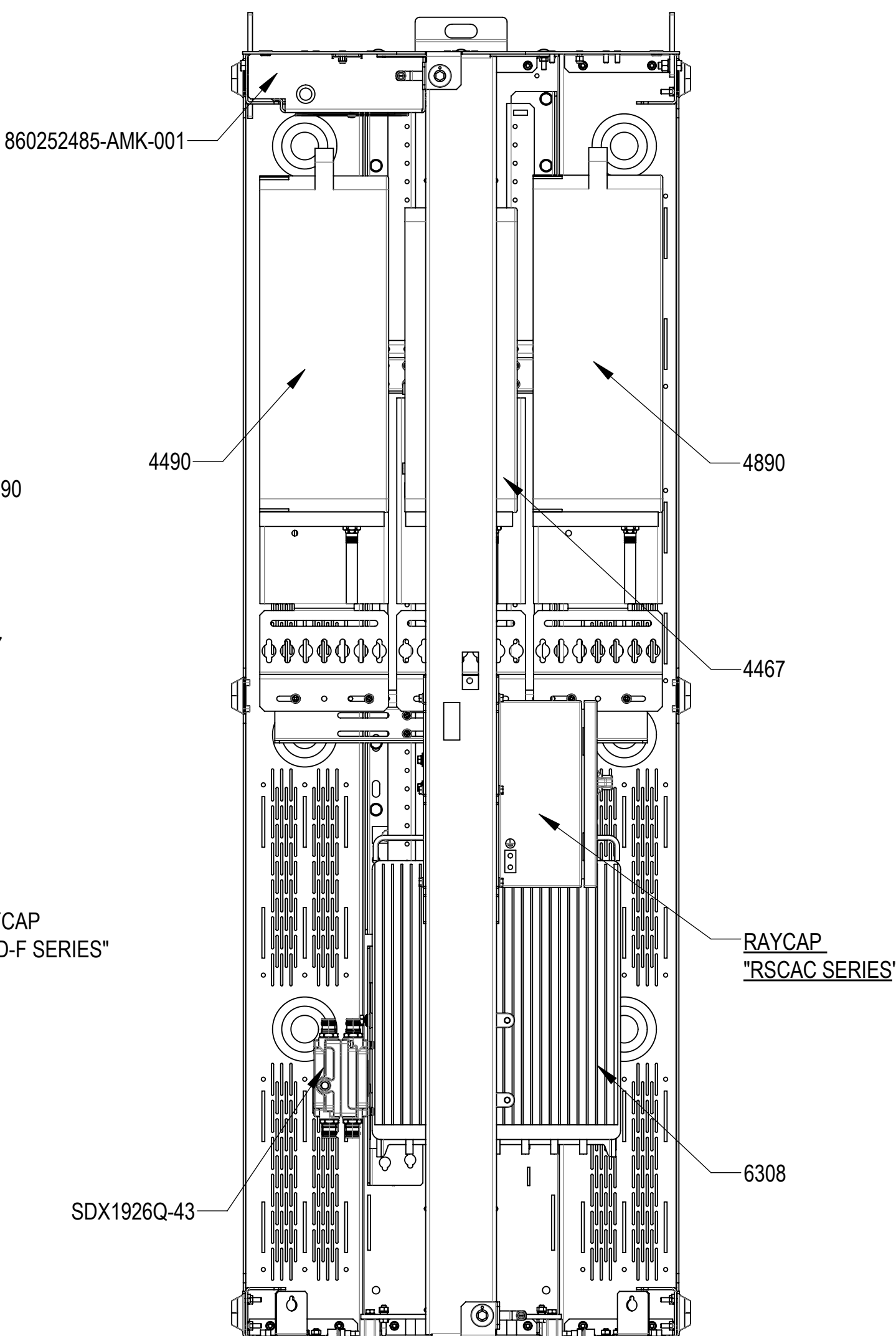
E12- 4490, 4890, 4467, PSU 6308, SDX1926Q-43, RSCAC SERIES AND 860252485-AMK-001



E10 CONFIG
FRONT VIEW
(DOORS NOT SHOWN FOR CLARITY)



E11 CONFIG
FRONT VIEW
(DOORS NOT SHOWN FOR CLARITY)



E12 CONFIG
FRONT VIEW
(DOORS NOT SHOWN FOR CLARITY)