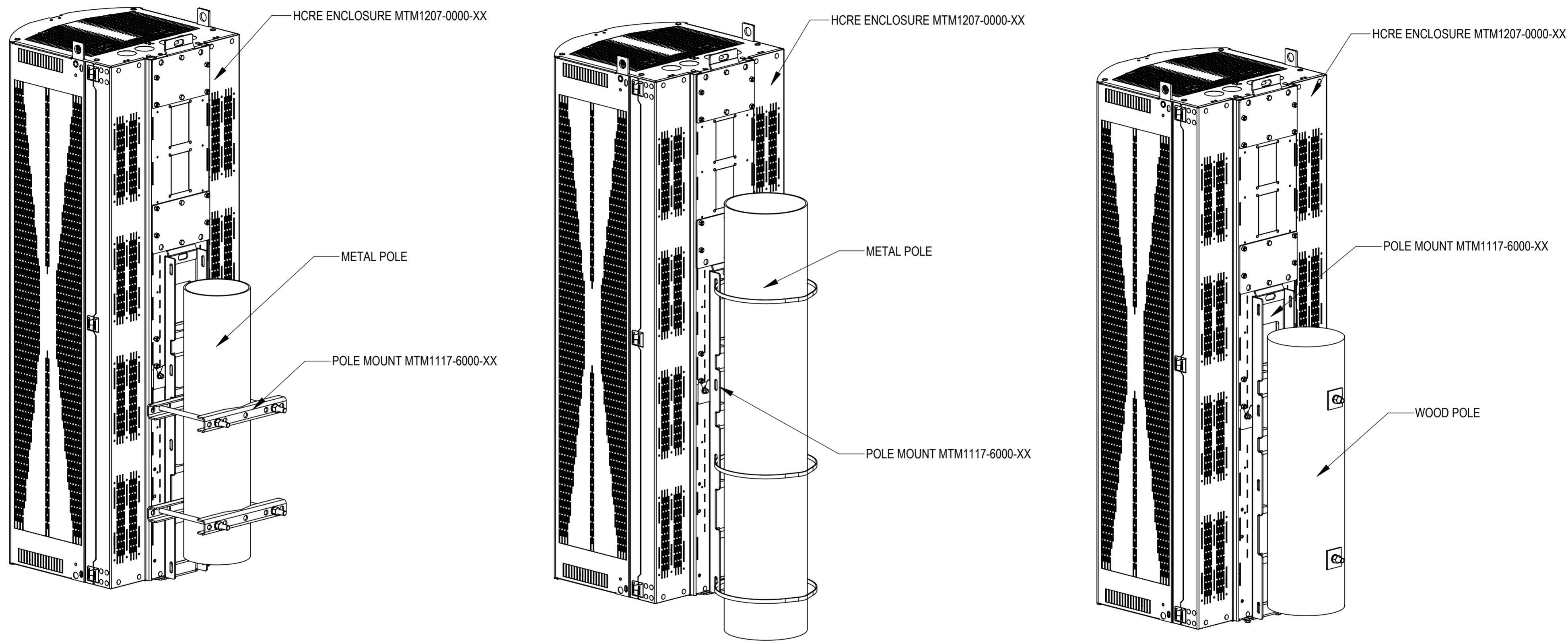


# Installation Instructions



## 760252485A3X\_INSTALL INSTALLATION INSTRUCTION

### INSTALLATION, HCRE WITH POLEMOUNT, 70"



REVISIONS			
REV.	DESCRIPTION	DATE	APPROVED
A	INITIAL RELEASE	ZL1057 17APR25	TN1010 50102509AMO
B	CLARIFIED ASSEMBLY AND INSTALLATION INSTRUCTIONS	ZL1057 04JUN25	JX1002 50103208AMO
C			

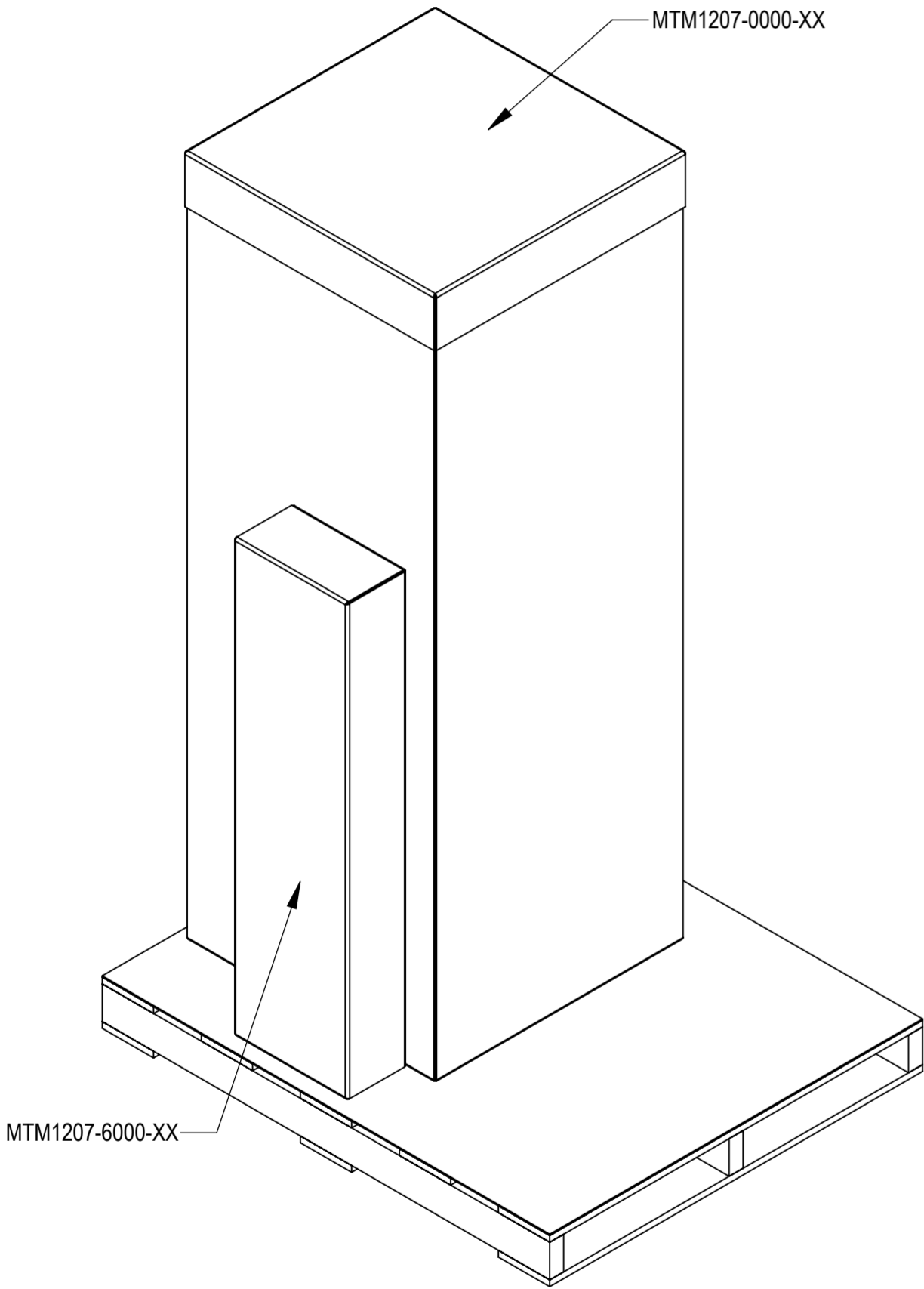
This table show the evolution and history of document from initial to current version.

Further information regarding ANDREW's commitment can be found at <https://www.andrew.com/sustainability/>.  
Visit our website or contact your local ANDREW representative for more information.  
This product is covered by one or more U.S. patents or their foreign equivalents. For patents, see [www.adwpat.com](http://www.adwpat.com)

# Installation Instructions



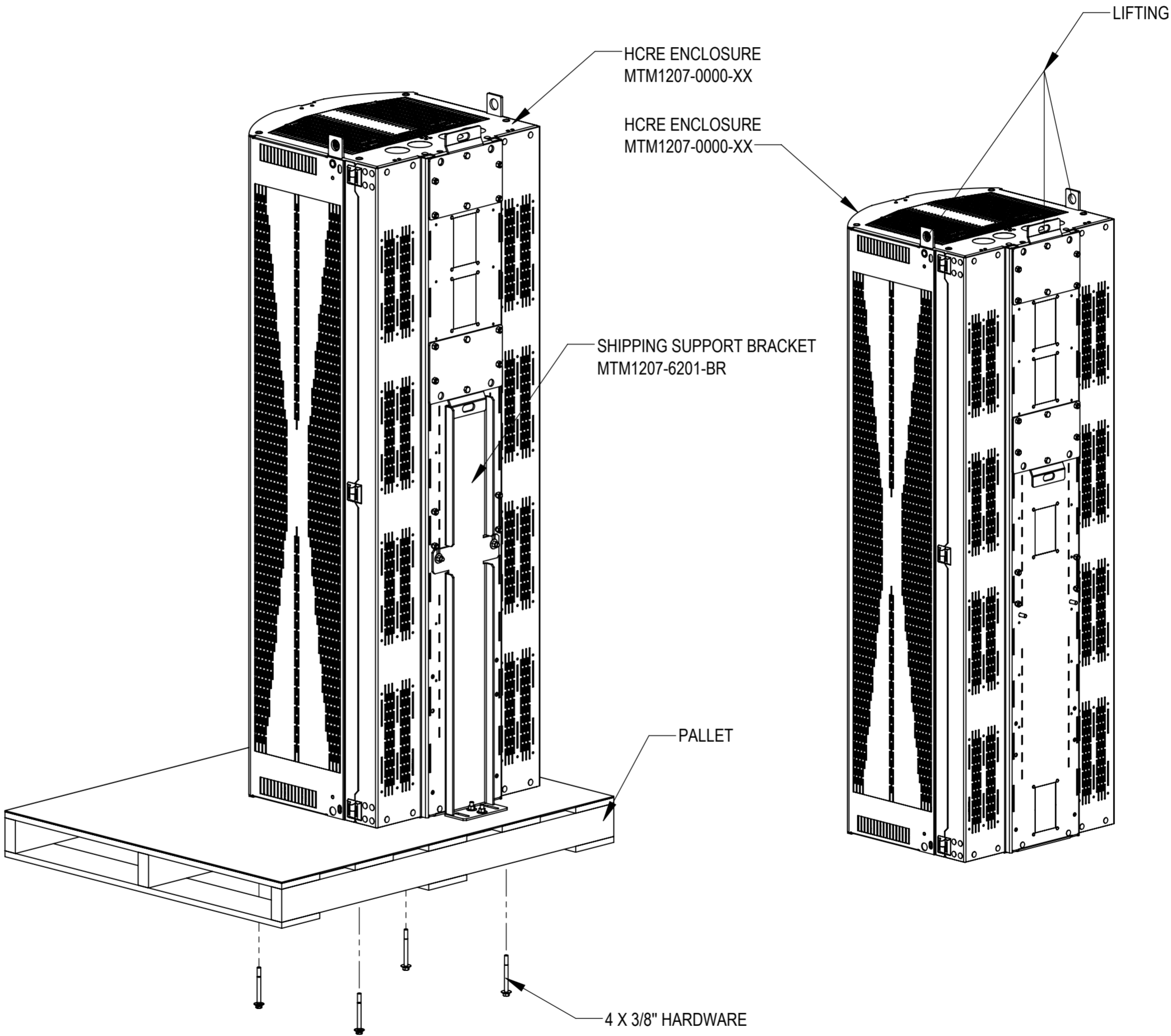
- 1.0 GENERAL NOTES
- 1.1 ALL METRIC DIMENSIONS ARE IN BRACKETS [X.X]
- 2.0 DESIGN NOTES
- 3.0 MANUFACTURING/SPECIAL REQUIREMENTS
- 3.1 TIGHTEN HARDWARES, TORQUE VALUE ARE SHOWN BELOW AS REFERENCE,  
M6: TORQUE 40.0 IN-LB OR 4.5 N-M (W/ CLIP NUT)  
M6: TORQUE 46.0 IN-LB OR 5.2 N-M (W/ THREADED CAST AL)  
M6: TORQUE 75.0 IN-LB OR 8.5 N-M (W/ STEEL NUT)  
M8: TORQUE 6.6 FT-LB OR 9.0 N-M (W/ THREADED CAST AL)  
M10: TORQUE 16.2 FT-LB OR 22 N-M (W/ THREADED CAST AL)  
1/4-20: TORQUE 4.8 FT-LB OR 6.6 N-M  
5/8-11: TORQUE 50 FT-LB OR 68.2 N-M



### STEP 1

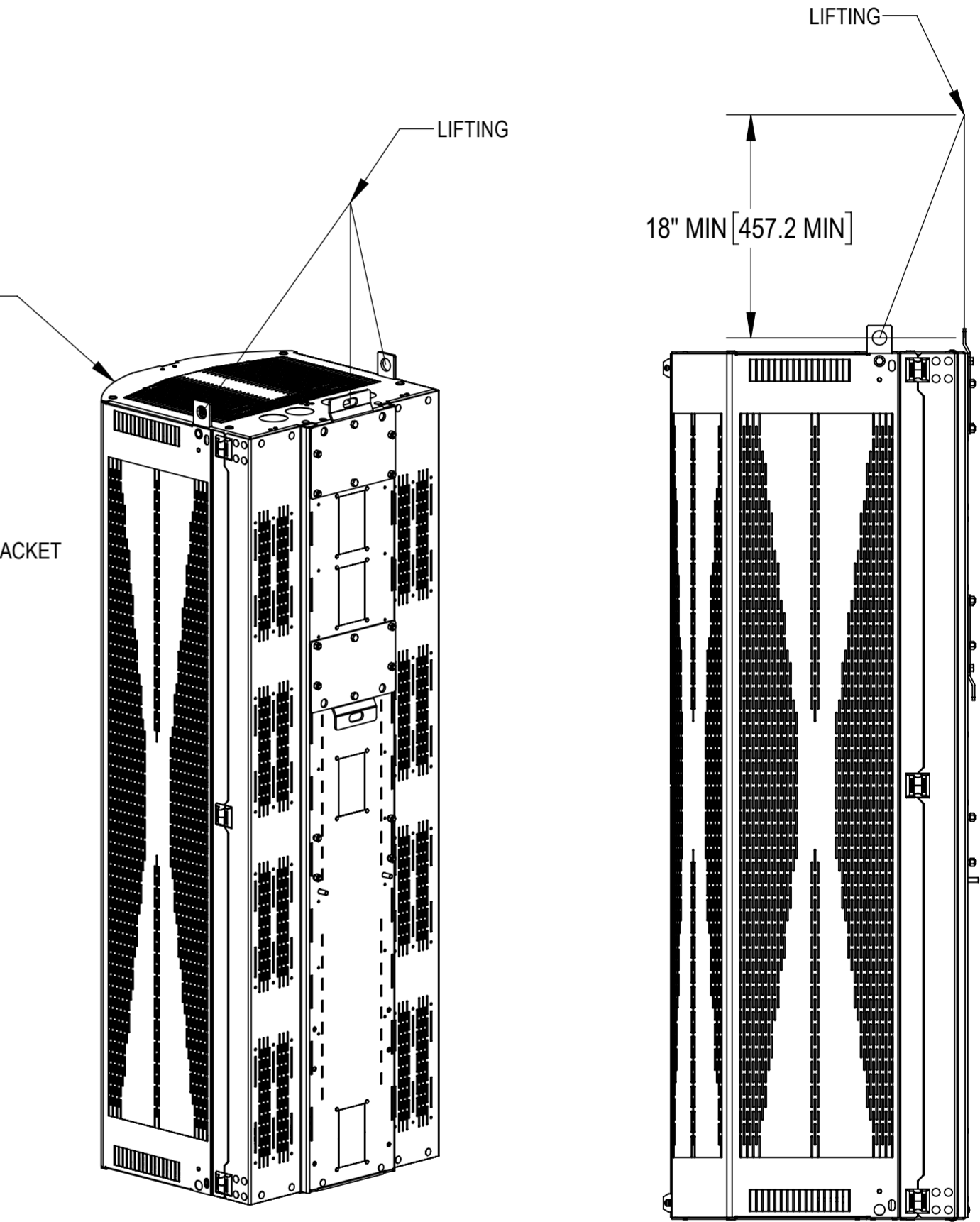
UNBOX ENCLOSURE MTM1207-0000-XX. **DO NOT REMOVE FROM SHIPPING SUPPORT BRACKET OR PALLET UNTIL IT IS BEING LIFTED AND SET ON THE POLE.**  
LOAD COMPONENTS IN ENCLOSURE WHILE STILL ATTACHED TO SHIPPING BRACKET AND PALLET OR AFTER ENCLOSURE IS MOUNTED TO POLE.

INSTALL POLE MOUNT KIT PER INSTRUCTIONS PROVIDED WITH MTM1117-6000-XX



### STEP 2

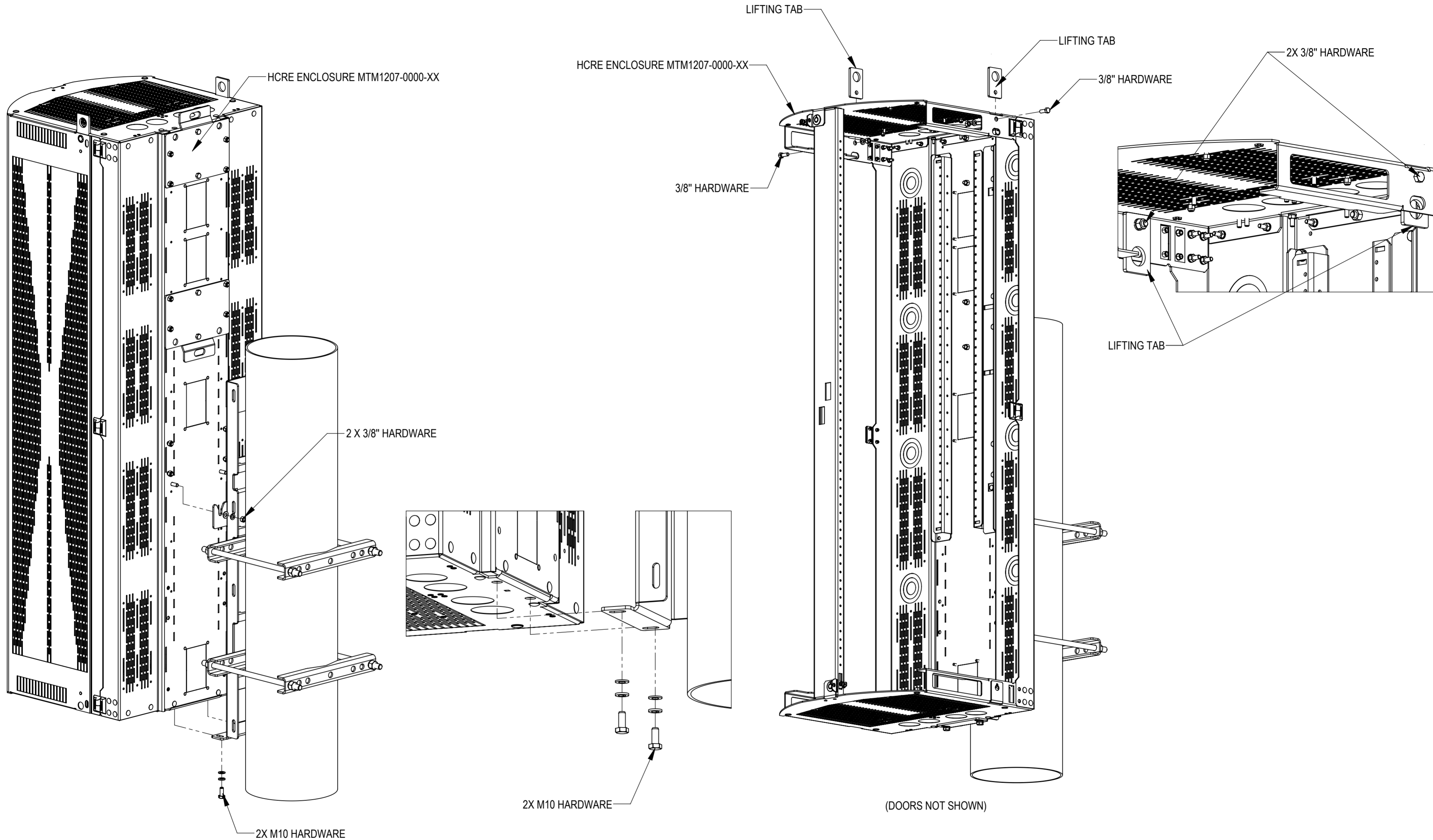
WHEN READY TO MOUNT ENCLOSURE TO POLE, REMOVE THE BOLTS SECURING THE ENCLOSURE TO THE PALLET, LEAVING THE ENCLOSURE RESTING ON THE SHIPPING SUPPORT BRACKET UNTIL IT IS LIFTED FROM THE PALLET TO BE SET ON THE POLE.



### STEP 3

LIFT ENCLOSURE MTM1207-0000-XX, MAKING SURE THE LIFTING POINT IS 18" MINIMUM ABOVE THE LIFT ENCLOSURE

# Installation Instructions



**STEP 4**

SET ENCLOSURE MTM1207-0000-XX ONTO POLE MOUNT USING 2 SETS OF M10 HARDWARE AND 2 SETS OF 3/8" HARDWARE

**STEP 5**

LOOSEN THE HARDWARE OF THE LIFTING TABS, THEN TURN THE LIFTING TABS 180 DEGREES TO HIDE IT INSIDE THE ENCLOSURE.  
IF LOADING WASN'T PERFORMED PRIOR TO SETTING ENCLOSURE ON POLE, LOAD COMPONENTS AS NEEDED.