

## Universal

## Grounding Bar

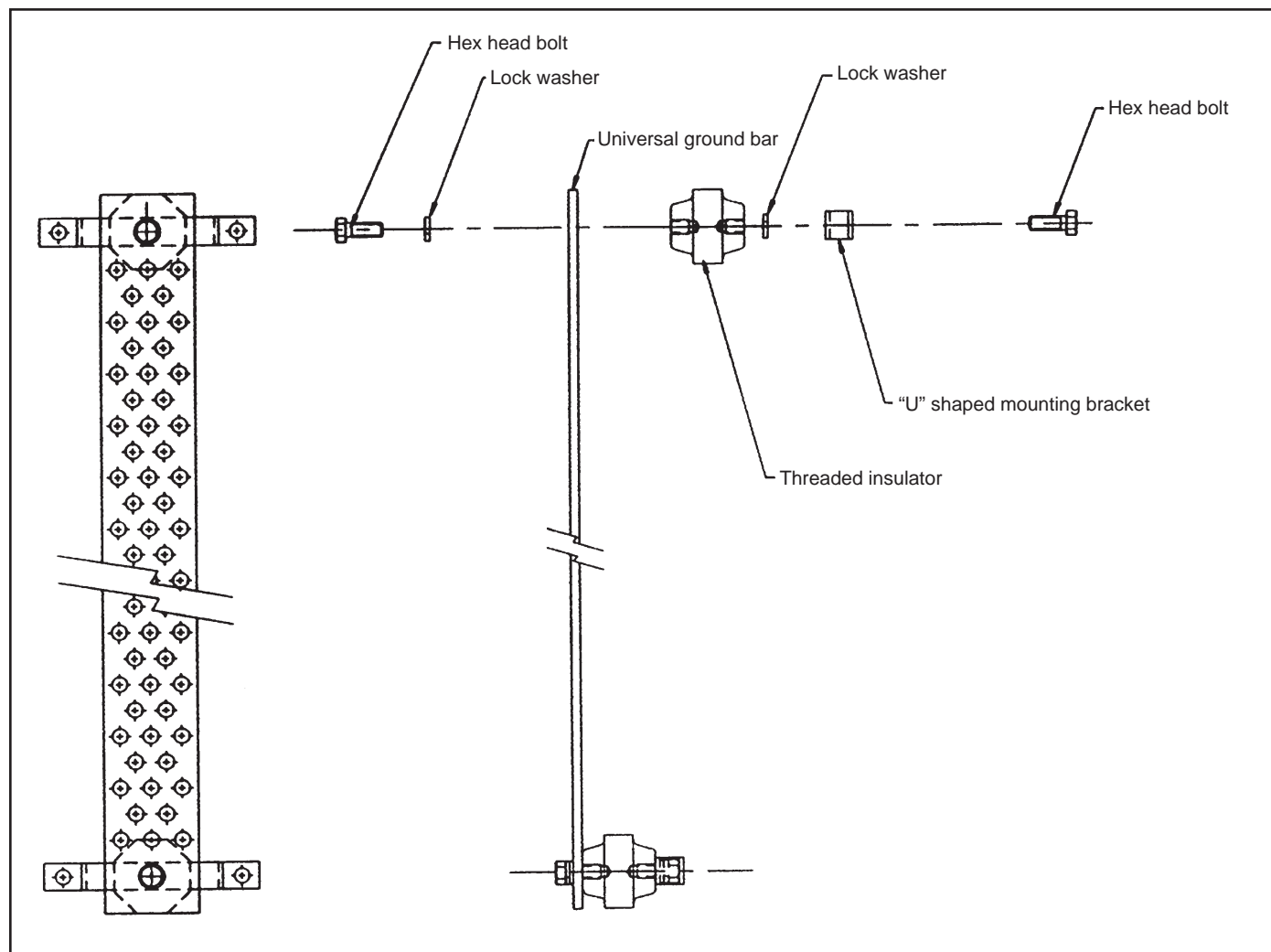
Bulletin 237440

Revision C

### Description

Universal Ground Bar Types UGBKIT & UGBKIT-2 offers the mounting flexibility needed by today's wireless operators installing systems in the variety of sites encountered at today's installations. The Universal Ground Bar is designed specifically to accommodate vertical and 90° mounting configurations. It can be mounted on towers, building, rooftops and anywhere grounding is required. The solid copper bar is designed to fit the two-hole lug spacing on Andrew grounding kits and comes complete with insulators and mounting hardware.

- 1** Bolt "U" shaped mounting bracket to insulator using hex head bolt and lock washer.
- 2** Bolt ground bar to insulator using hex head bolt and lock washer. **Note:** Orient mounting bracket as desired before tightening.
- 3** Repeat procedure on remaining end of ground bar assembly.
- 4** Mount universal ground bar assembly to desired structure.



### ANDREW an Amphenol company

2601 Telecom Parkway, Richardson, Texas, 75082, USA  
www.andrew.com

### Technical Support

+1 888 297 6433, Option 3 (Toll Free US and Canada)  
awpnarsupport@andrew.com

Notice: ANDREW disclaims any liability or responsibility for the results of improper or unsafe installation, inspection, maintenance, or removal practices.

Aviso: ANDREW no acepta ninguna obligación ni responsabilidad como resultado de prácticas incorrectas o peligrosas de instalación, inspección, mantenimiento o retiro.

Avis: ANDREW décline toute responsabilité pour les conséquences de procédures d'installation, d'inspection, d'entretien ou de retrait incorrectes ou dangereuses.

Hinweis: ANDREW lehnt jede Haftung oder Verantwortung für Schäden ab, die aufgrund unsachgemäßer Installation, Überprüfung, Wartung oder Demontage auftreten.

Atenção: A ANDREW abdica do direito de toda responsabilidade pelos resultados de práticas inadequadas e sem segurança de instalação, inspeção, manutenção ou remoção.

Avvertenza: ANDREW declina eventuali responsabilità derivanti dall'esecuzione di procedure di installazione, ispezione, manutenzione e smontaggio improprie o poco sicure.

注意: ANDREW 公司申明對於不恰當或不安全的安裝、檢驗、維修或拆卸操作所導致的後果不負責任 何義務和責任