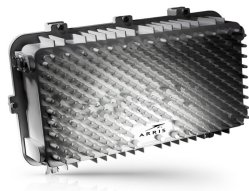


# OM412DHSYAE2XN2XV000



## Opti Max™ 1.2 GHz Deep OM4120 Optical Node, 4x4 HFC Segmentable

- \*Product complies with the Build America, Buy America Act (BABAA) requirements of the Infrastructure Investment and Jobs Act of 2021 (Pub. L. 117- 58, §§ 70901-70953), or is the subject of a waiver approved by the Secretary of Commerce or designee. Compliance requirements and waiver applicability vary based on government funding program. Check the laws and regulations for your specific program.

### Product Classification

|                         |                                                                     |
|-------------------------|---------------------------------------------------------------------|
| Regional Availability   | Asia   Australia/New Zealand   EMEA   Latin America   North America |
| Product Type            | Optical node platform                                               |
| Product Series          | OM4120                                                              |
| Government Requirements | Build America Buy America (BABA) compliant*                         |

### General Specifications

|                           |                                         |
|---------------------------|-----------------------------------------|
| Location of Manufacturing | Waived per BABA waiver for BEAD Program |
|---------------------------|-----------------------------------------|

### Electrical Specifications

|                         |         |
|-------------------------|---------|
| Input Voltage Range, ac | 44–90 V |
|-------------------------|---------|

### Environmental Specifications

|                       |                                      |
|-----------------------|--------------------------------------|
| Operating Temperature | -40 °C to +60 °C (-40 °F to +140 °F) |
| Relative Humidity     | 5%–95%, non-condensing               |

### Regulatory Compliance/Certifications

| Agency     | Classification                    |
|------------|-----------------------------------|
| CHINA-ROHS | Above maximum concentration value |
| ROHS       | Compliant/Exempted                |
| UK-ROHS    | Compliant/Exempted                |

