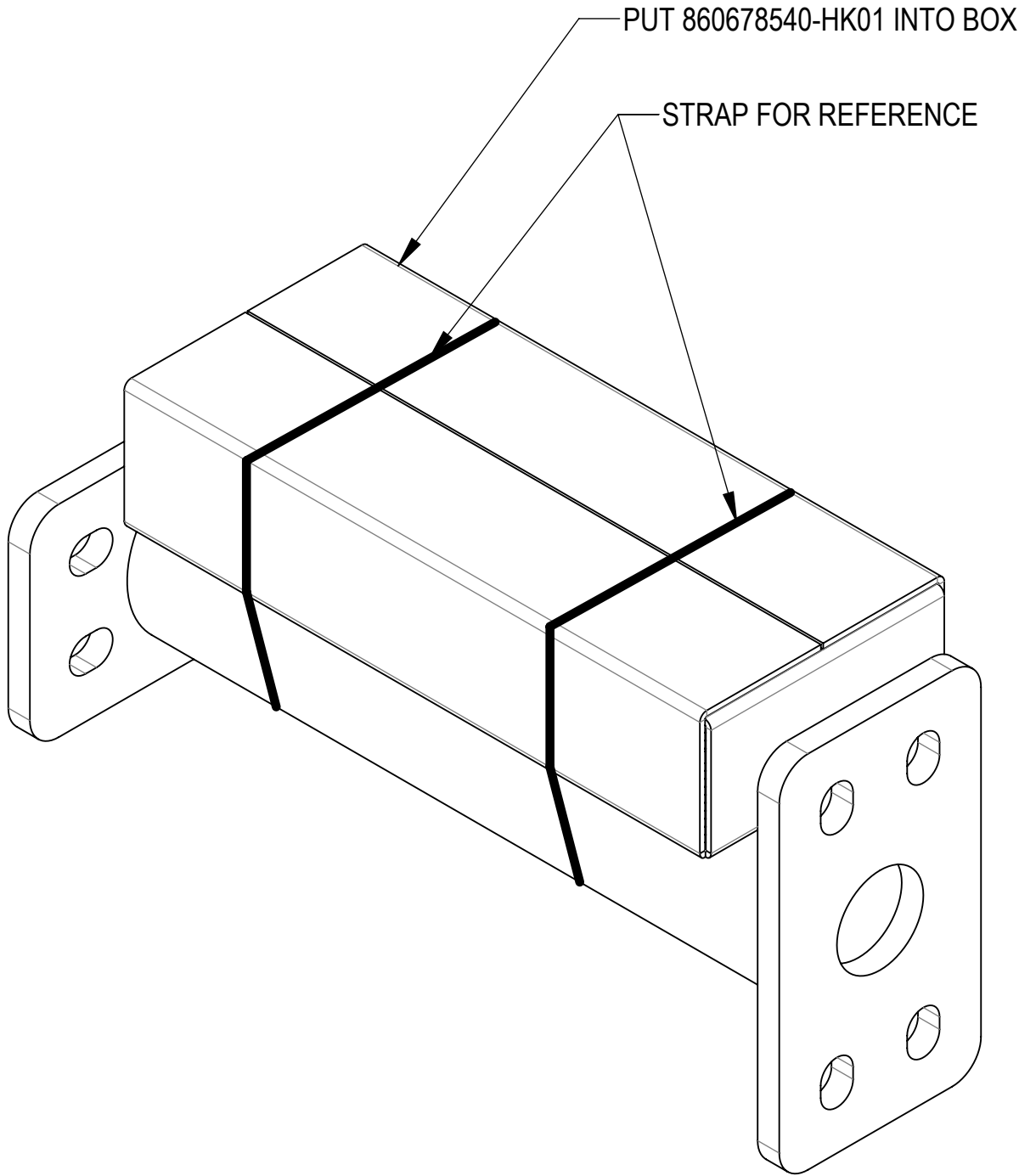
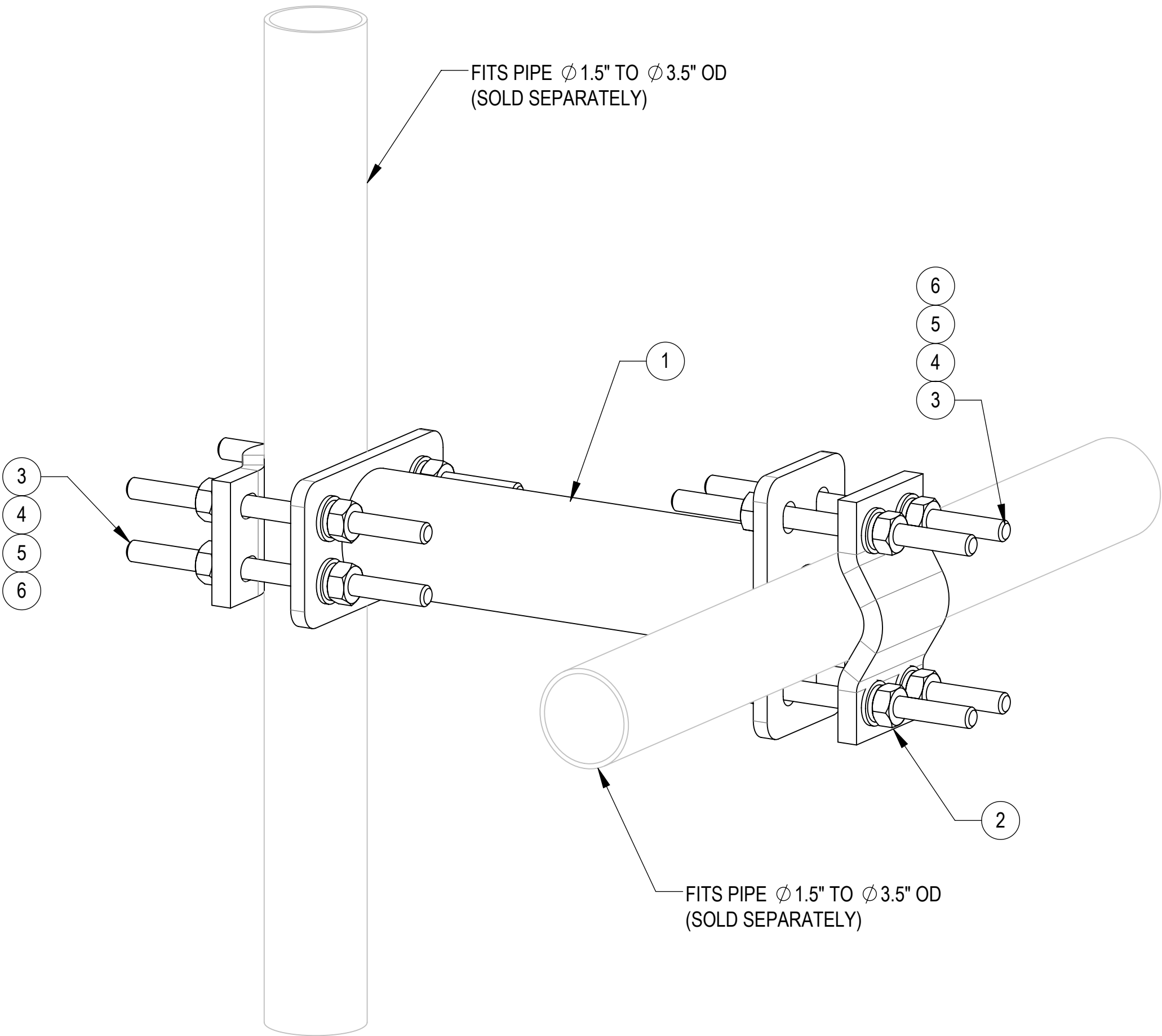


- 1.0 GENERAL NOTES
- 1.1 ALL METRIC DIMENSIONS ARE IN BRACKETS [X. X]
- 1.2 FOR PATENT INFO: <https://adwpat.cs-pat.com>
- 2.0 DESIGN NOTES
- 2.1 ANY HAZARDS OR OBSTRUCTIONS TO THE CLIMBING FACILITY AND SAFETY CLIMB MUST BE IDENTIFIED PRIOR TO INSTALLING THE APPURTENANCE. ADDITIONAL PRODUCTS MAY BE REQUIRED TO MAINTAIN THE INTEGRITY OF THE SAFETY CLIMB. DURING INSTALLATION, TEMPORARY AND/OR PERMANENT PRECAUTIONARY MEASURES SHOULD BE TAKEN TO PRESERVE THE CLIMBING FACILITY AND/OR SAFETY CLIMB.
- 3.0 MANUFACTURING/SPECIAL REQUIREMENTS
- 3.1 TIGHTEN ALL BOLTS SECURING FLAT PLATES BY THE TURN-OF-NUT METHOD. TIGHTEN ALL U-BOLTS USING TURN-OF-NUT METHOD WITH ATTENTION TO LEAVE EQUAL DISTANCE AND EQUAL FORCE ON EACH LEG OF THE U-BOLT.
- 4.0 TEST
- 5.0 PACKAGING
- 5.1 PACKAGING SHALL MEET ANDREW REQUIREMENTS PER DOCUMENT IS-PL-3005
- 5.2 PRINTED DOCUMENT TO BE PLACED INSIDE POLYBAG AND THEN IN SHIPPING CONTAINER
- 5.3 EXTRA HARDWARE MAY BE SUPPLIED, BAGGED AND SHIPPED

REVISIONS			
REV.	DESCRIPTION	DATE	APPROVED
A	INITIAL RELEASE	YX1027 16APR25	YZ1080 50102475AMO
B	SCP1001D (ITEM2) & QTY 2 WAS SCP10 & QTY 4; UPDATED PACKAGING VIEW	YX1027 29MAY25	YZ1080 50103111AMO

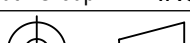
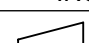


PACKAGING

COMPONENT PART NUMBERS PROVIDED FOR ASSEMBLY PURPOSES;  
INDIVIDUAL COMPONENTS MAY BE SHIPPED AS PARTS WITHIN AN INCLUDED KIT.

ITEM NO.	PART NUMBER	DESCRIPTION	QTY.	WEIGHT	NOTE NO.
1	860678540-1201-00	12" STANDOFF CROSSOVER WELDMENT	1	15.09 LBS	
2	SCP1001D	1.5" - 3.5" O.D. Double Clamp Half (BLACK)	2	2.40 LBS	
3	MT-379-8	1/2" X 8" GALV THREADED ROD	8	0.44 LBS	
4	GWF04A	1/2" GALV FLAT WASHER (A325)	16	0.02 LBS	
5	GWL-04	1/2" GALV LOCK WASHER	16	0.01 LBS	
6	GN-04A	1/2" GALV HEX NUT (A194 2H)	16	0.07 LBS	

DENSITY		lbs/in³
MASS	30.92	lbs
VOLUME	109.02	in³
SURFACE AREA	1269.35	in²
HEIGHT	8.625"	
LENGTH	12.376"	
WIDTH	12.376"	

UNLESS OTHERWISE SPECIFIED DIMENSIONS ARE IN INCHES INTERPRET PER ANSI Y 14.5M-1994		NAME	DATE	12" STANDOFF CROSSOVER WELDMENT, KIT					
	CE	YX1027	16APR25						
	RW	YX1027	06/17/2025						
					SCALE 1:4				
	AD	YZ1080	06/19/2025						
	RE	YMENG	06/20/2025	DOCUMENT NO.  860678540-12					
	ECN 50103111AMO								
SIZE	Auth Group	INSL	MODEL			DRAWING			SHEET  1 OF 1
C			VERSION	STATUS	REVISION	VERSION	STATUS	REVISION	
			01	RE	B	01	RE	B	

Confidential