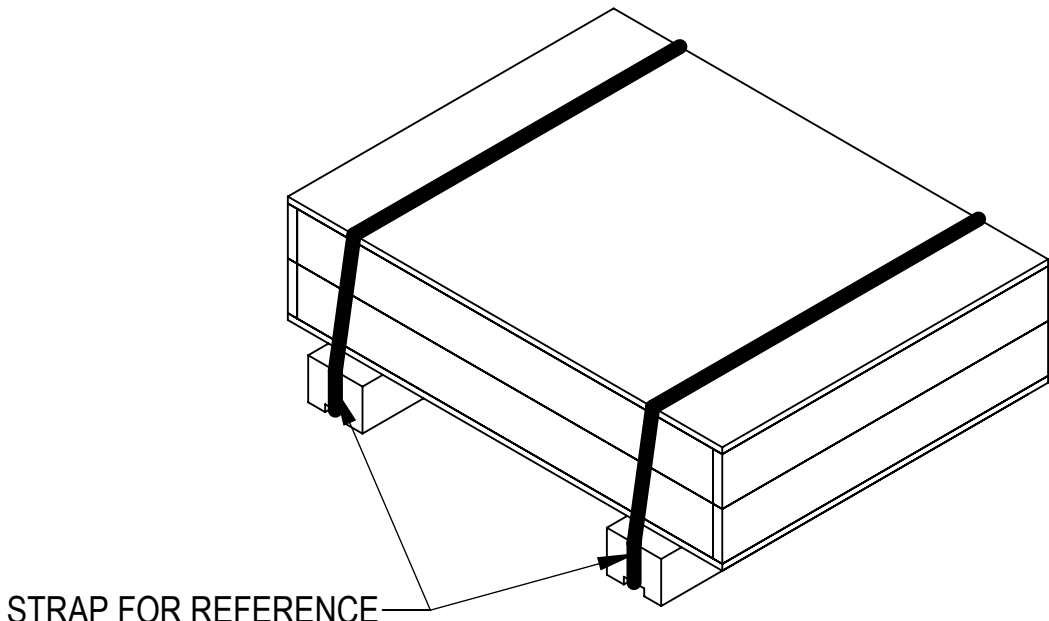
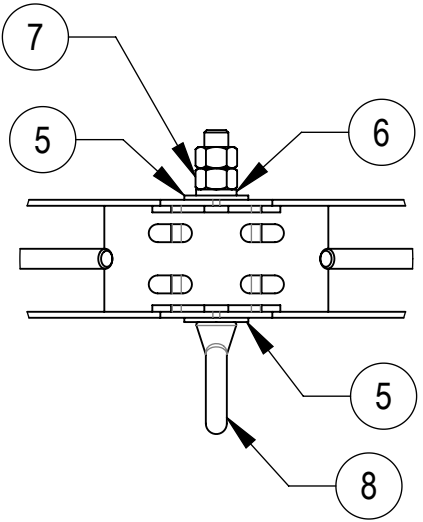
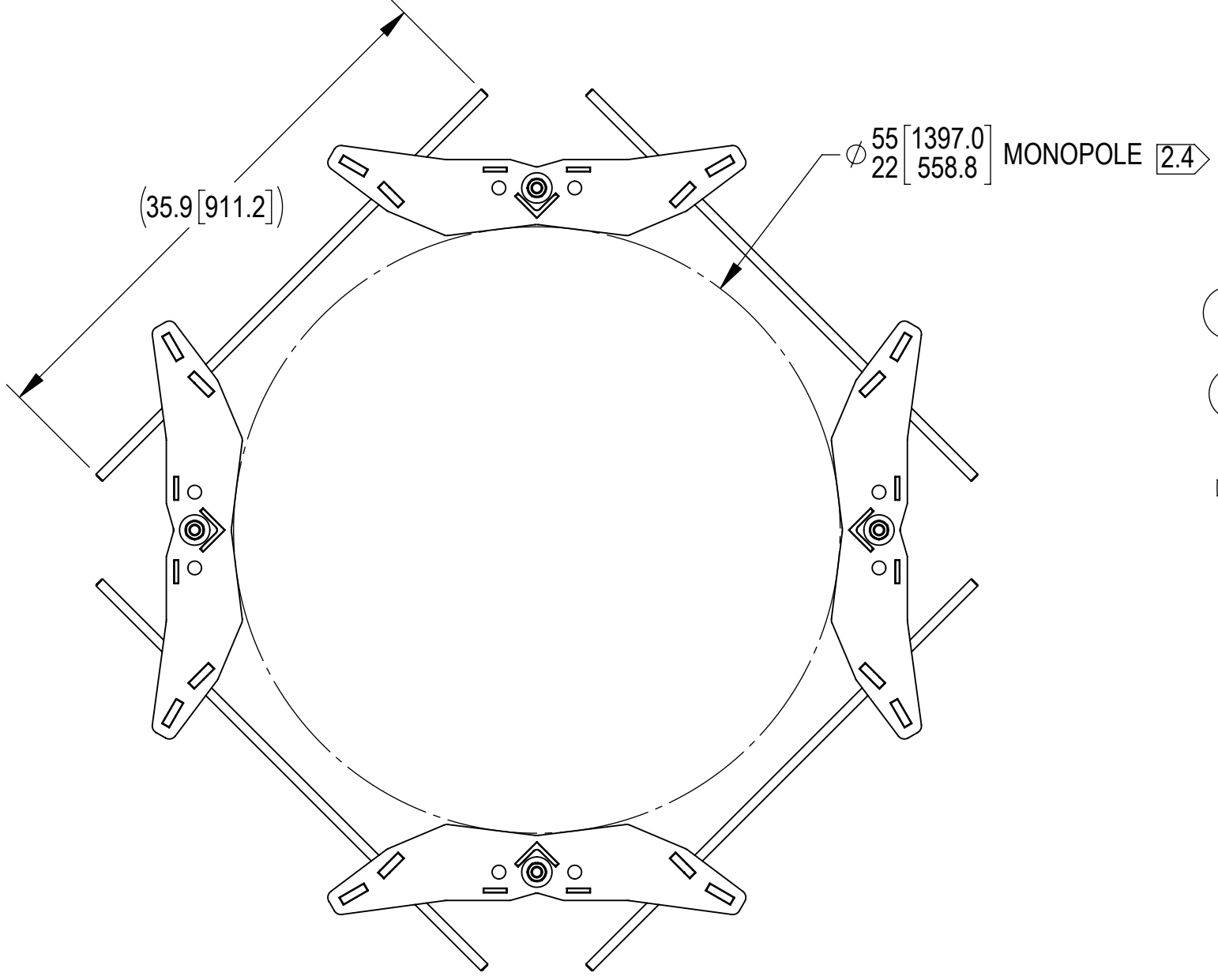
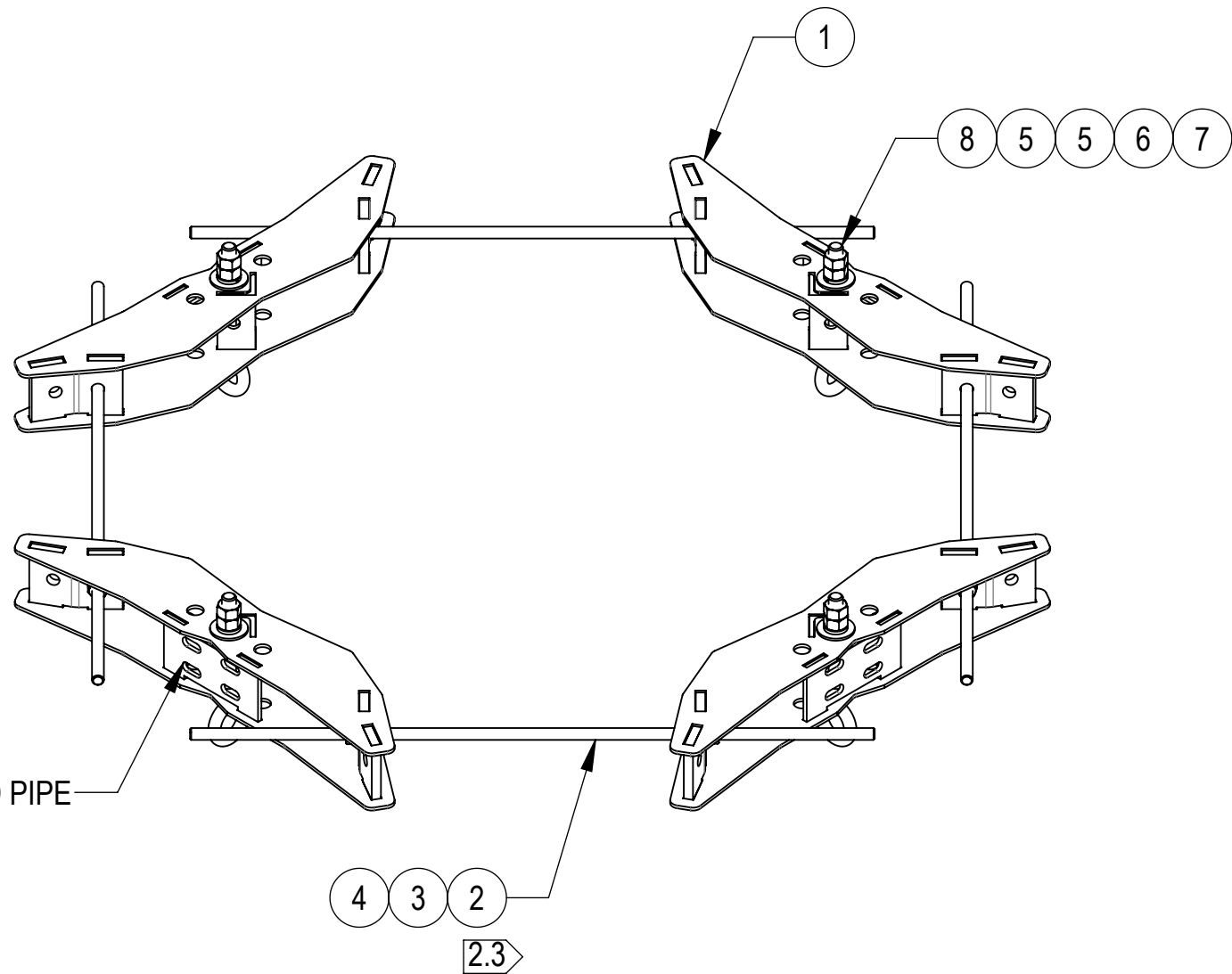


- 1.0 GENERAL NOTES
- 1.1 ALL METRIC DIMENSIONS ARE IN BRACKETS [X. X]
- 1.2 FOR PATENT INFO: <https://www.cs-pat.com>
- 2.0 DESIGN NOTES
- 2.1 ANY HAZARDS OR OBSTRUCTIONS TO THE CLIMBING FACILITY AND SAFETY CLIMB MUST BE IDENTIFIED PRIOR TO INSTALLING THE APPURTENANCE. ADDITIONAL PRODUCTS MAY BE REQUIRED TO MAINTAIN THE INTEGRITY OF THE SAFETY CLIMB. DURING INSTALLATION, TEMPORARY AND/OR PERMANENT PRECAUTIONARY MEASURES SHOULD BE TAKEN TO PRESERVE THE CLIMBING FACILITY AND/OR SAFETY CLIMB
- 2.2 INSTALL SO AS TO NOT UNNECESSARILY OBSTRUCT THE CLIMBING PATH OR CLIMBING FACILITY
- 2.3 THREADED RODS CAN BE CUT BACK POST INSTALLATION TO PREVENT OBSTRUCTION AS PER REQUIREMENTS OF TOWER OWNER
- 2.4 REVIEWED FOR USE WITH A MINIMUM POLE DIAMETER OF 10" WITH WALL THICKNESS OF 3/16" AND A YIELD STRENGTH OF 36 KSI. FOR USE ON THINNER MATERIAL REQUIRES ADDITIONAL ENGINEERING REVIEW
- 3.0 MANUFACTURING/SPECIAL REQUIREMENTS
- 3.1 TIGHTEN ALL BOLTS SECURING FLAT PLATES BY THE TURN-OF-NUT METHOD. TIGHTEN ALL U-BOLTS USING TURN-OF-NUT METHOD WITH ATTENTION TO LEAVE EQUAL DISTANCE AND EQUAL FORCE ON EACH LEG OF THE U-BOLT
- 4.0 TEST
- 5.0 PACKAGING
- 5.1 PACKAGING SHALL MEET COMMSCOPE REQUIREMENTS PER DOCUMENT IS-PL-3005
- 5.2 PRINTED DOCUMENT TO BE PLACED INSIDE POLYBAG AND THEN IN SHIPPING CONTAINER
- 5.3 EXTRA HARDWARE MAY BE SUPPLIED, BAGGED AND SHIPPED

REVISIONS			
REV.	DESCRIPTION	DATE	APPROVED
A	INITIAL RELEASE	RY1002 27MAR25	YZ1080 50102254AMO



PACKAGE



DETAIL A  
SCALE 1 : 6

NOTE: 1 - MAXIMUM NET CABLE WEIGHT FOR STRAIGHT POLES:  
A- PER EYEBOLT = 1000 LBS  
B- PER MOUNT = 3000 LBS  
2 - MAXIMUM NET CABLE WEIGHT FOR TAPERED POLES:  
A- PER EYEBOLT = 1250 LBS  
B- PER MOUNT = 3750 LBS  
3 - REVIEWED FOR USE WITH A MINIMUM POLE DIAMETER OF 10" WITH WALL THICKNESS OF 3/16" AND A YIELD STRENGTH OF 36 KSI. FOR USE ON THINNER MATERIAL REQUIRES ADDITIONAL ENGINEERING REVIEW

COMMSCOPE, INC. OF NORTH CAROLINA

TOLERANCES

1 PLACE .X[X] ± 0.2[6.3]  
2 PLACE .XX[X] ± 0.12[3.0]

3 PLACE .XXX[X] ± 0.060[1.5]  
ANGLES ± 2°

SAP MATERIAL MASTER  
860669616-2255

FINISH

MATERIAL

UNLESS OTHERWISE SPECIFIED  
DIMENSIONS ARE IN INCHES  
INTERPRET PER ANSI Y 14.5M-1994

	NAME	DATE	TITLE
CE	RY1002	27MAR25	GRIP ANCHOR, MONOPOLE, 22"-55"
RW	RY1002	04/11/2025	
AD	YZ1080	04/14/2025	
RE	RY1002	04/14/2025	
ECN 50102254AMO			SCALE 1:10

DOCUMENT NO.  
860669616-2255

DENSITY

MASS

VOLUME

SURFACE AREA

86.40

1256.15

6836.07

lbs/in³

lbs

in³

in²

HEIGHT

LENGTH

WIDTH

9.5"

58.3"

58.3"

SIZE

Auth Group

INSL

C

MODEL

VERSION

STATUS

REVISION

00

RE

A

DRAWING

VERSION

STATUS

REVISION

00

RE

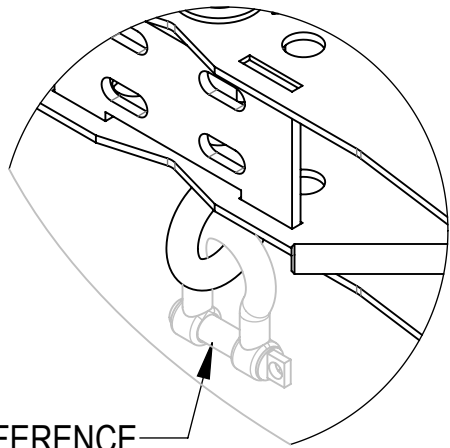
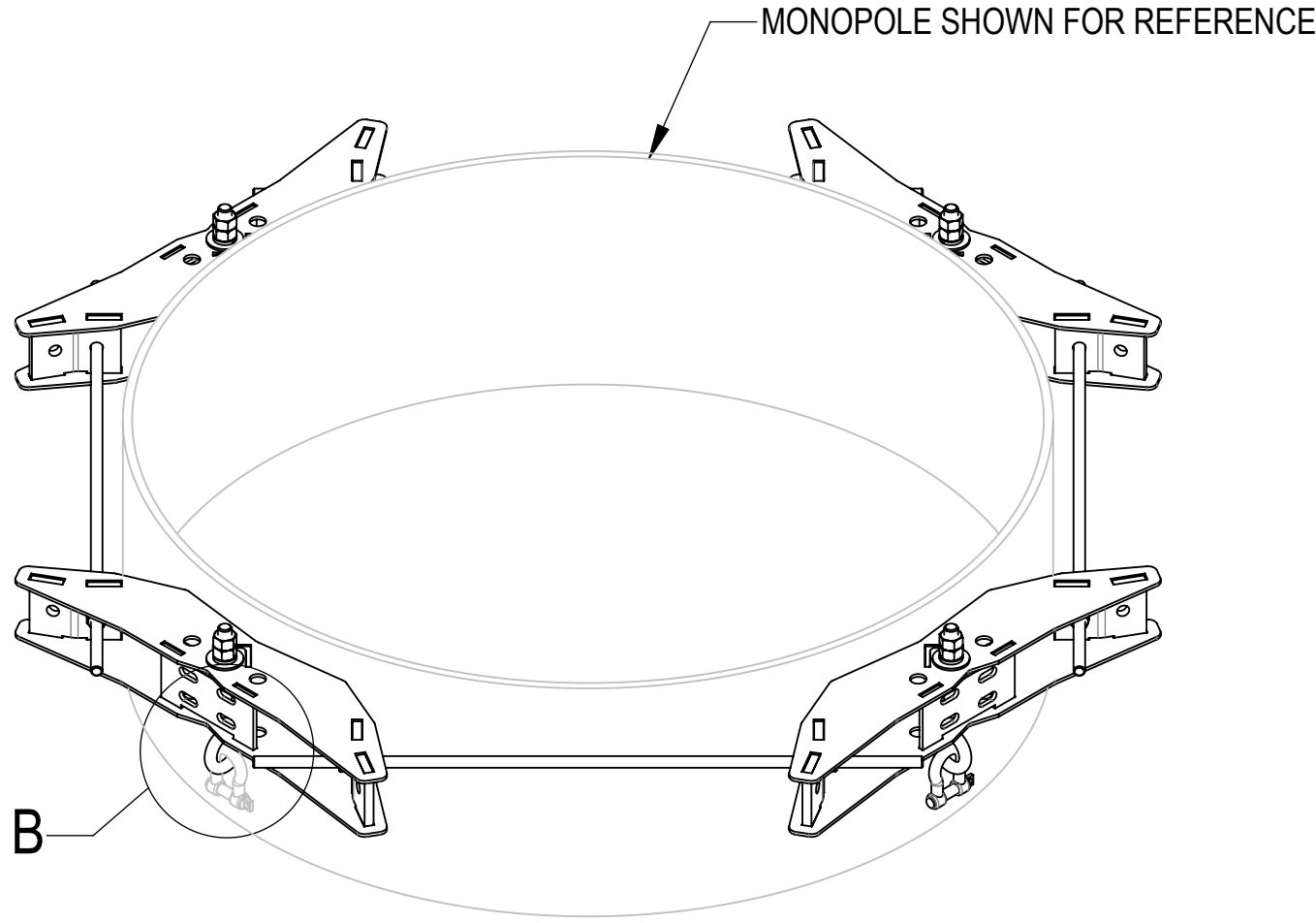
A

SHEET  
1 OF 2

COMPONENT PART NUMBERS PROVIDED FOR ASSEMBLY PURPOSES;  
INDIVIDUAL COMPONENTS MAY BE SHIPPED AS PARTS WITHIN AN INCLUDED KIT.

ITEM	PART NO.	DESCRIPTION	QTY.	WEIGHT	NOTE NO.
1	MTC8606-030-00	HG ANCHOR, SECTOR WELDMENT	4	17.54 LBS	
2	MT-382-36	5/8" X 36" GALV THREADED ROD	4	3.11 LBS	
3	GWL-05	5/8" GALV LOCK WASHER	8	0.03 LBS	
4	GN-05	5/8" GALV HEX NUT	8	0.08 LBS	
5	GWF-06	3/4" GALV FLAT WASHER	8	0.10 LBS	
6	GWL-06	3/4" GALV LOCK WASHER	4	0.04 LBS	
7	GN-06	3/4" GALV HEX NUT	4	0.15 LBS	
8	9674-4	BOLT, EYE, 3/4X6, STL, GALV	4	1.60 LBS	

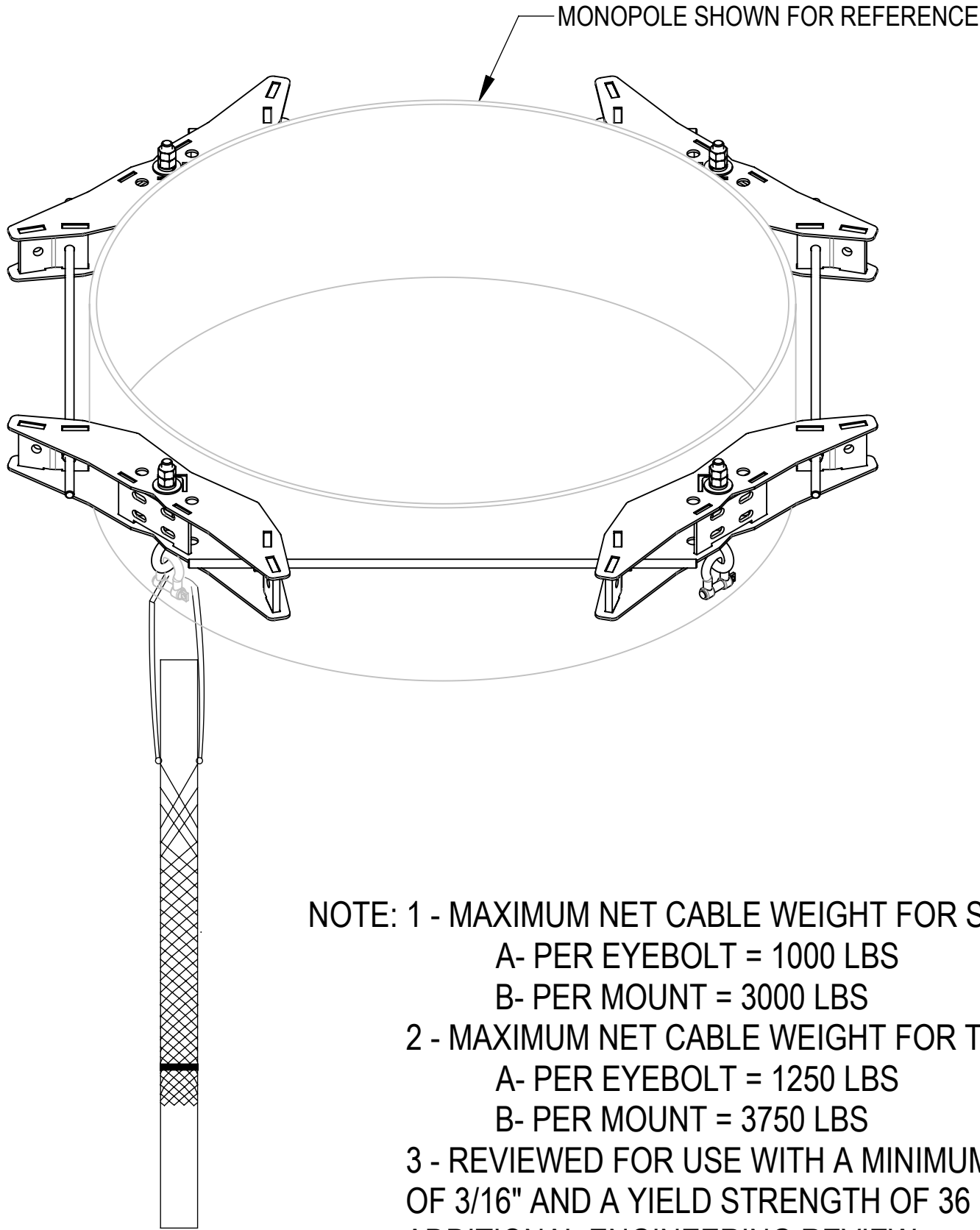
OPTIONAL ACCESSORIES  
(PURCHASED SEPARATELY)



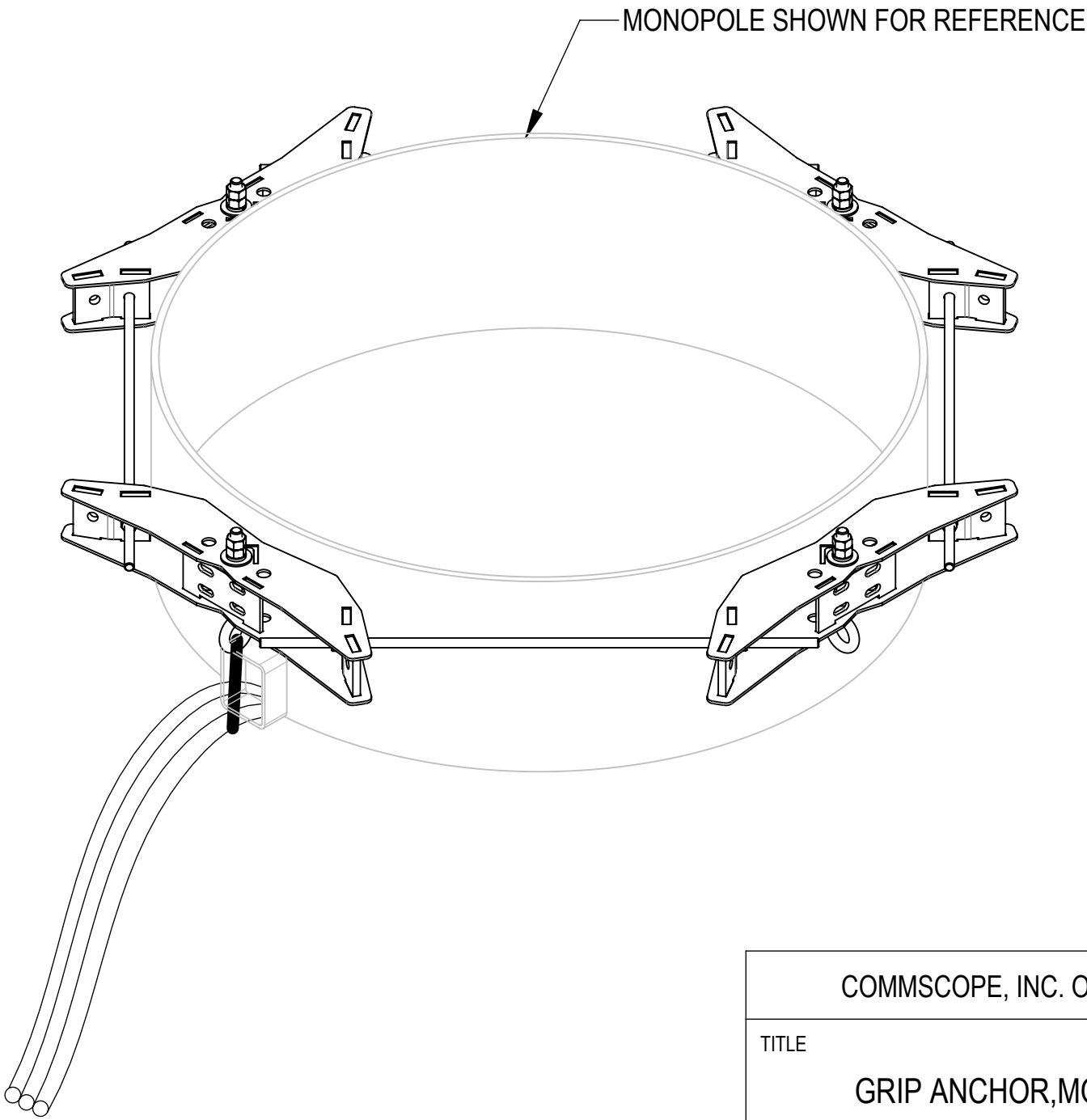
5/8" SHACKLE SHOWN FOR REFERENCE


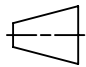
DETAIL B  
SCALE 1 : 4

SCHEMATIC DIAGRAM OF CABLE FIXING METHOD



NOTE: 1 - MAXIMUM NET CABLE WEIGHT FOR STRAIGHT POLES:  
A- PER EYEBOLT = 1000 LBS  
B- PER MOUNT = 3000 LBS  
2 - MAXIMUM NET CABLE WEIGHT FOR TAPERED POLES:  
A- PER EYEBOLT = 1250 LBS  
B- PER MOUNT = 3750 LBS  
3 - REVIEWED FOR USE WITH A MINIMUM POLE DIAMETER OF 10" WITH WALL THICKNESS OF 3/16" AND A YIELD STRENGTH OF 36 KSI. FOR USE ON THINNER MATERIAL REQUIRES ADDITIONAL ENGINEERING REVIEW



COMMSCOPE, INC. OF NORTH CAROLINA				
TITLE GRIP ANCHOR, MONOPOLE, 22"-55"				
SIZE C	SCALE 1:10	DOCUMENT NO. 860669616-2255		
 		DRAWING		
		VERSION 00	STATUS RE	REVISION A
				SHEET 2 OF 2