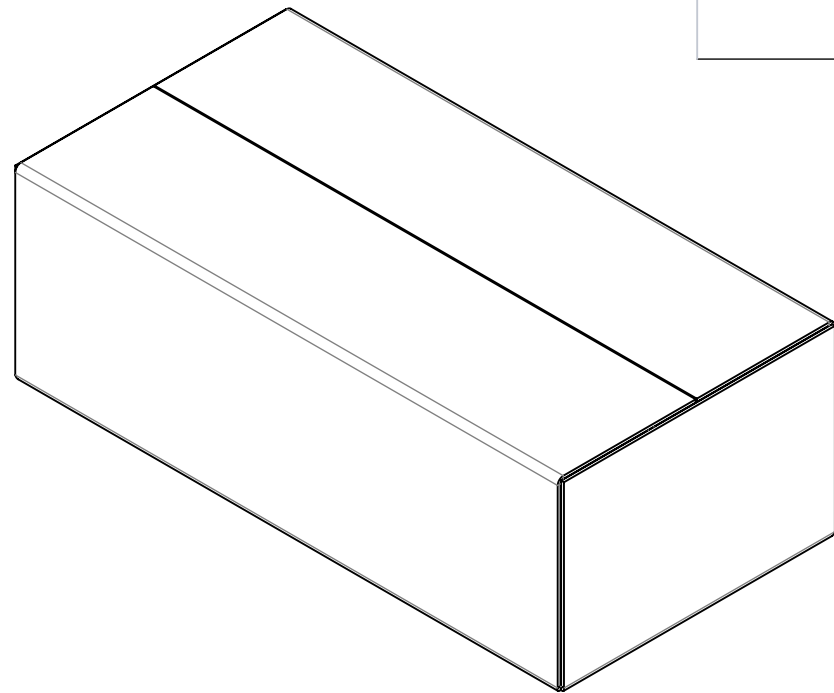
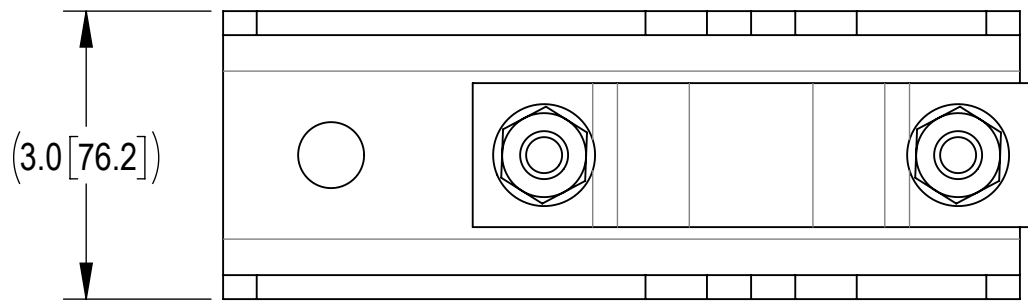
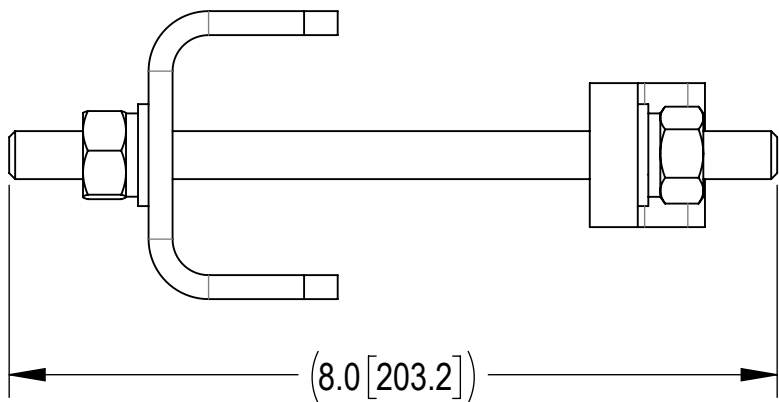
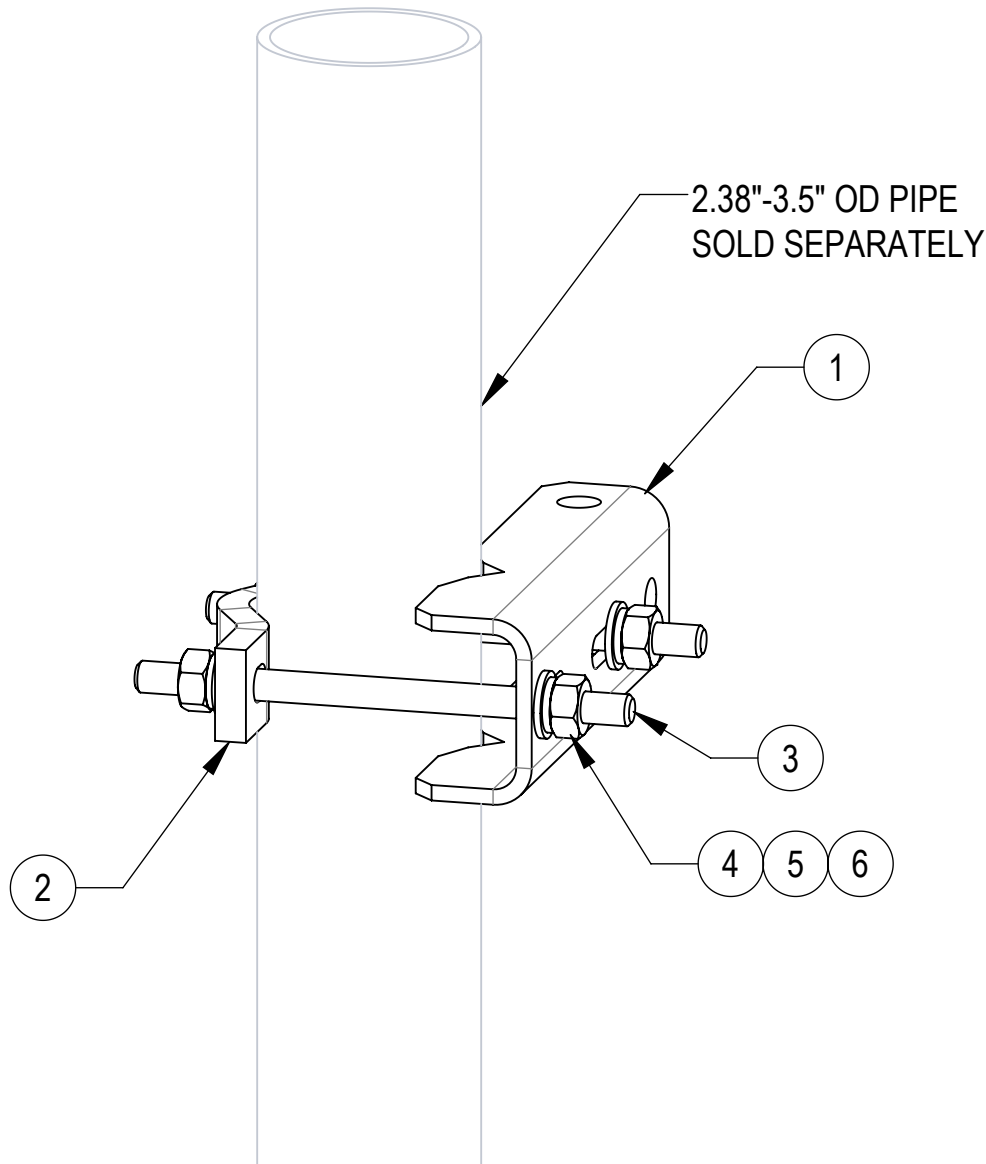
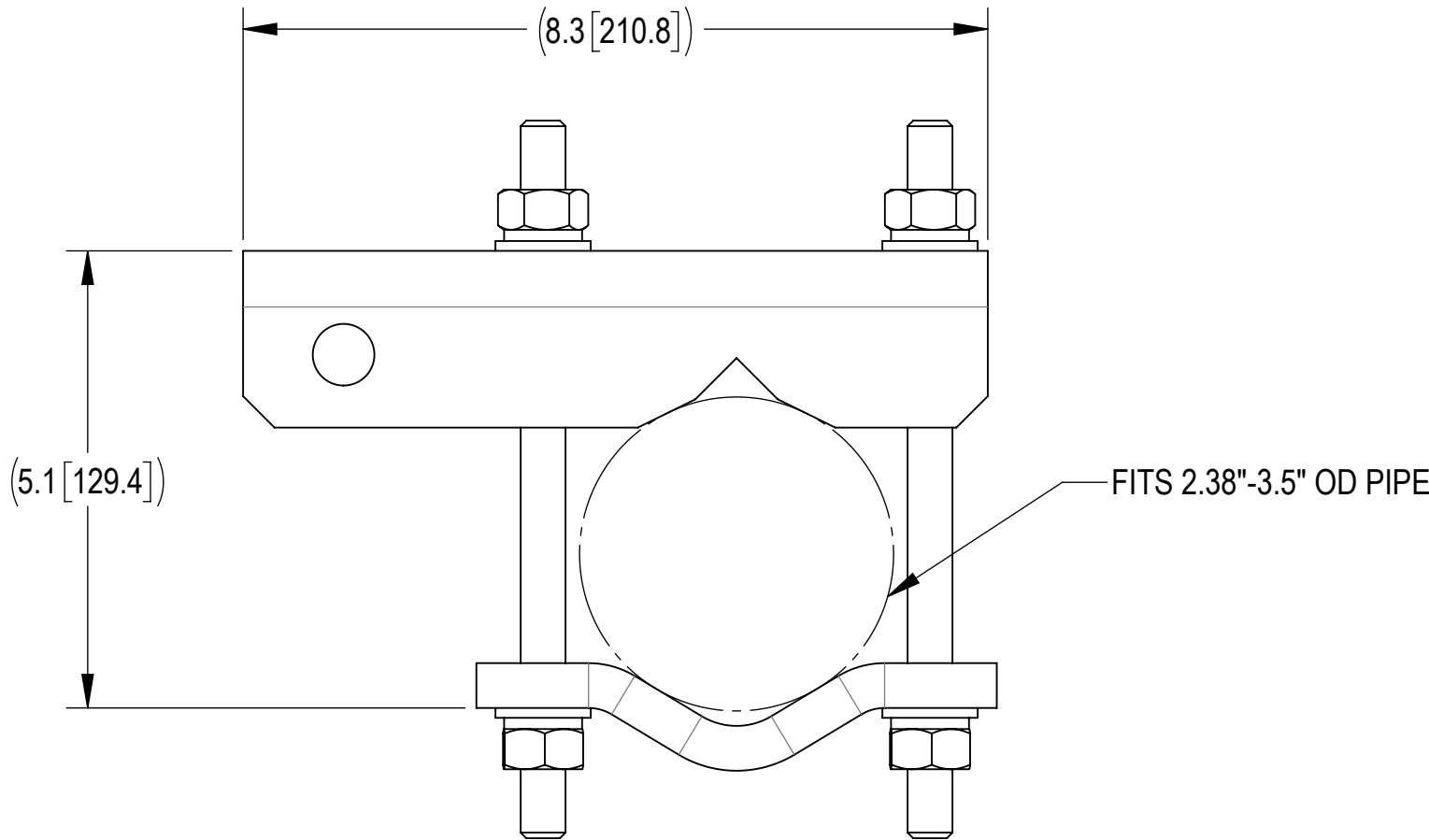


- 1.0 GENERAL NOTES
- 1.1 ALL METRIC DIMENSIONS ARE IN BRACKETS [X. X]
- 1.2 FOR PATENT INFO: <https://www.cs-pat.com>
- 2.0 DESIGN NOTES
- 2.1 ANY HAZARDS OR OBSTRUCTIONS TO THE CLIMBING FACILITY AND SAFETY CLIMB MUST BE IDENTIFIED PRIOR TO INSTALLING THE APPURTENANCE. ADDITIONAL PRODUCTS MAY BE REQUIRED TO MAINTAIN THE INTEGRITY OF THE SAFETY CLIMB. DURING INSTALLATION, TEMPORARY AND/OR PERMANENT PRECAUTIONARY MEASURES SHOULD BE TAKEN TO PRESERVE THE CLIMBING FACILITY AND/OR SAFETY CLIMB.
- 3.0 MANUFACTURING/SPECIAL REQUIREMENTS
- 3.1 TIGHTEN ALL BOLTS SECURING FLAT PLATES BY THE TURN-OF-NUT METHOD.
- 4.0 TEST
- 5.0 PACKAGING
- 5.1 PACKAGING SHALL MEET COMMScope REQUIREMENTS PER DOCUMENT IS-PL-3005
- 5.2 PRINTED DOCUMENT TO BE PLACED INSIDE POLYBAG AND THEN IN SHIPPING CONTAINER
- 5.3 EXTRA HARDWARE MAY BE SUPPLIED, BAGGED AND SHIPPED

REVISIONS			
REV.	DESCRIPTION	DATE	APPROVED
A	INITIAL RELEASE	LL1090 09APR25	JX1002 50102360AMO



PACKAGE

COMPONENT PART NUMBERS PROVIDED FOR ASSEMBLY PURPOSES;  
INDIVIDUAL COMPONENTS MAY BE SHIPPED AS PARTS WITHIN AN INCLUDED KIT.

ITEM	PART NO.	DESCRIPTION	QTY.	WEIGHT	NOTE NO.
1	TFMSSU-00	TOWER FACE MOUNT STIFFARM BRACKET	1	3.21 LBS	
2	SCP10	CLAMP HALF: 1/2", 9/16" HOLE, 4-1/8" (EA)	1	1.20 LBS	
3	MT-379-8	1/2" X 8" GALV THREADED ROD	2	0.44 LBS	
4	GN-04A	1/2" GALV HEX NUT (A194 2H)	4	0.07 LBS	
5	GWL-04	1/2" GALV LOCK WASHER	4	0.01 LBS	
6	GWFO4A	1/2" GALV FLAT WASHER (A325)	4	0.02 LBS	

DENSITY		lbs/in³
MASS	5.68	lbs
VOLUME	20.16	in³
SURFACE AREA	178.44	in²
HEIGHT	8.0"	
LENGTH	8.3"	
WIDTH	3.0"	

UNLESS OTHERWISE SPECIFIED DIMENSIONS ARE IN INCHES INTERPRET PER ANSI Y 14.5M-1994		NAME	DATE	TITLE	
	CE	LL1090	09APR25		
	RW	LL1090	04/13/2025		
	AD	JX1002	04/13/2025	SCALE 1:2	
	RE	LL1090	04/13/2025		
	ECN 50102360AMO			DOCUMENT NO.	

UNIVERSAL STRUT ATTACHMENT BKT					TF-MSS-BK-U				
SIZE					DRAWING				
Auth Group					MODEL				
INSL					VERSION				
STATUS					REVISION				
00					00				
RE					RE				
--					A				
SHEET					1 OF 1				