

COMMScope®



ADAPT XPND GROW

Spikes in fiber demand,
tight deployment timelines,
fluctuating budgets.

Growth brings uncertainty.

How will you adapt?

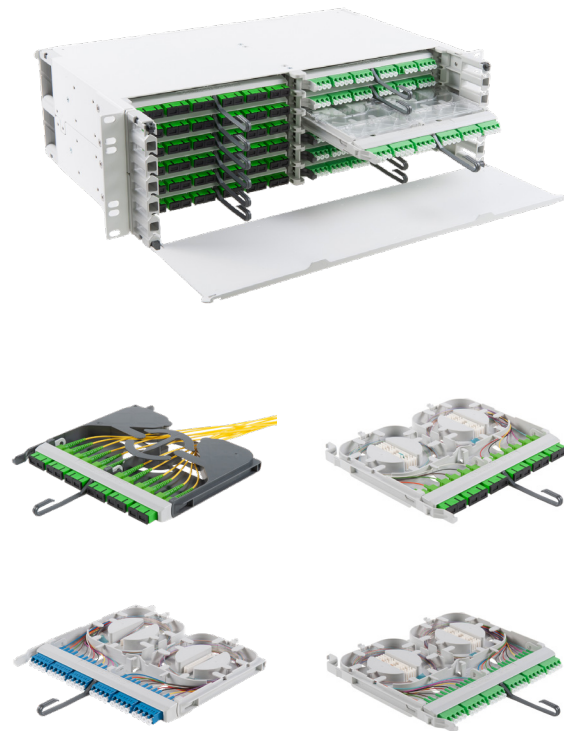
Where do you see your network years from now? Bigger and more agile—able to scale easily and turn up new services seamlessly? More efficient—getting more from your people, central office and fiber platform to boost your bottom line? Under control—in terms of budget, change management and pace of growth?

Envisioning where you want your network to be is one thing; getting there is something else entirely. Start with a fiber platform that's designed like nothing else. CommScope XPND: the exceptionally modular fiber platform for growing networks.

Think small, agile and built for growth

Inside the central office, active equipment like optical line terminals (OLTs), switches and servers are growing in power and shrinking in size. Bulky equipment chassis are being reduced to solutions whose compact shelf footprints occupy just a few RUs of space. In smaller facilities, where active electronics and passive fiber infrastructure can fit in a 19-inch rack or cabinet, it can be hard to justify the cost of a dedicated optical distribution frame. Yet, fiber connectivity and cable management are required to ensure clear demarcation, as well as a flexibility point between active gear and the passive outside fiber plant.

Enter the CommScope XPND™ portfolio. With a completely modular design, high-density footprint and interchangeable components, the CommScope XPND fiber platform gives you the agility to scale, reconfigure and respond to market changes as they happen. Get the flexible fiber management, connectivity and cable handling you need to support next-generation fiber active technology while protecting your investment in passive infrastructure.



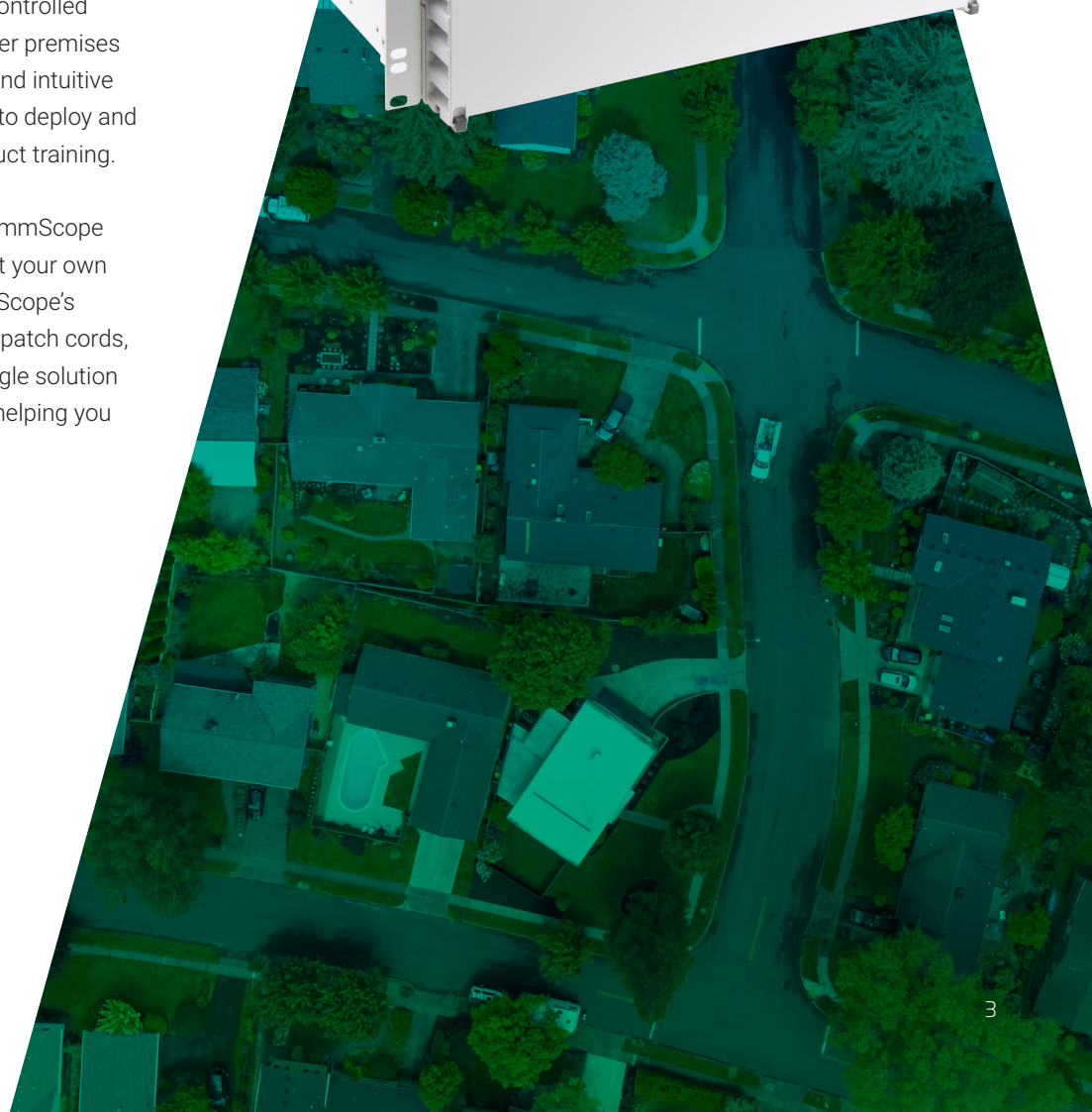
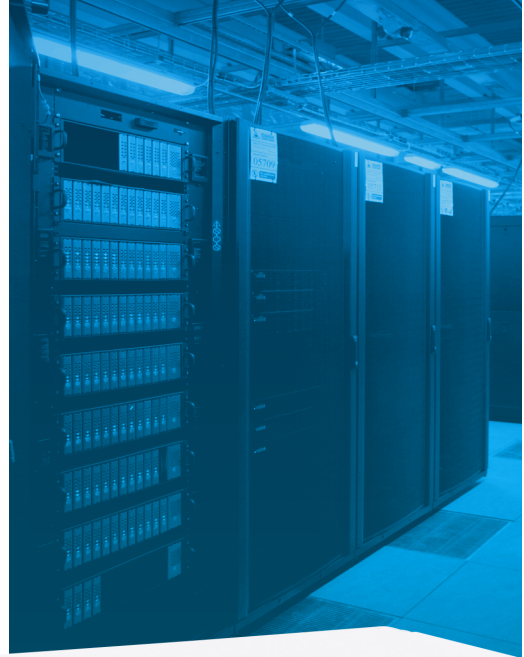
XPND your fiber potential

The CommScope XPND fiber platform enables you to work faster, scale effortlessly, spend smarter and grow with confidence.

The CommScope XPND platform consists of panels, cassettes, modules and cables that work together to support virtually any configuration and application. The panels, cassettes and modules are shipped separately, giving you the freedom to customize and grow quickly and easily. Mix and match cassettes and modules as needed or preserve room for future growth. Minimize SKUs and inventory costs and maximize your network's potential. The CommScope XPND platform continues to evolve, delivering more value year after year.

With a depth of just 12 inches, CommScope XPND panels are at home in a wide range of interconnect and cross-connect applications: central offices, indoor cabinets, outdoor cabinets, huts, controlled environmental vaults (CEVs), and customer premises applications. A streamlined architecture and intuitive operation make it easy for any personnel to deploy and manage without requiring extensive product training.

With a pay-as-you-grow approach, the CommScope XPND fiber platform allows you to grow at your own pace and on your own terms. Add CommScope's industry-leading portfolio of fiber cabling, patch cords, splitters and assemblies, and you've a single solution that flexes and scales quickly and easily, helping you make the most of every opportunity.



Panels



CommScope XPND platform panels are compact and versatile, giving you more options for deployment and expansion. Panels are available in 1RU, 1.5RU and 3RU sizes with corresponding maximum fiber densities of 48/72/144 (SC) and 96/144/288 (LC). Panels are shipped empty, providing a blank canvas that you can customize and fill over time as your network grows and your fiber needs change. Each CommScope XPND panel can accommodate four cassettes per 1RU. Cassettes are sold separately for a sensible pay-as-you-grow approach.

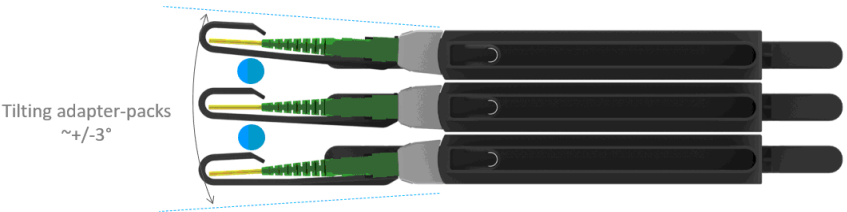
Adjustable mounting brackets support 19- or 23-inch rack mounting with two-inch and five-inch recess mounting. Panels and cassettes are sold separately, enabling you to mix and match any cassettes in any size panel in any position. Vertical cable guides on the left and right side of each panel improve cable management. The CommScope XPND fiber platform includes splice cassettes to enable on-frame splicing. With the purchase of a separate cable module, the platform supports off-frame splicing as well, providing even more functionality and options.

| Description (Rack or cabinet mount panel, putty white) | Dimensions (HxWxD) in inches | Weight (lbs) | MID |
|---|---------------------------------|--------------|--------------|
| 1 RU empty panel, putty white; accommodates four cassettes and modules | 1.75 x 19 x 12 | 5.70 | XP-RM1U-4C |
| 1.5 RU empty panel, putty white; accommodates six cassettes and modules | 2.62 x 19 x 12 | 6.65 | XP-RM1.5U-6C |
| 3 RU empty panel, putty white; accommodates 12 cassettes and modules | 5.25 x 19 x 12 | 9.25 | XP-RM3U-12C |

Cassettes and modules

CommScope XPND panel cassettes and modules are designed for maximum flexibility, fiber density and manageability. Available in a variety of configurations, the cassettes accommodate 48 SC (96 LC) fiber terminations per RU. They can be installed on the left or right side of the panel and can be accessed from the front or back of the panel, making fiber termination and splicing fast and efficient.

CommScope XPND cassettes offer a patented adapter tilting feature. This unique design enables the installer to separate adapter rows, pivoting them up and down to allow more room for finger access to individual connectors while protecting fiber bend radius.



Patch/Splice cassettes

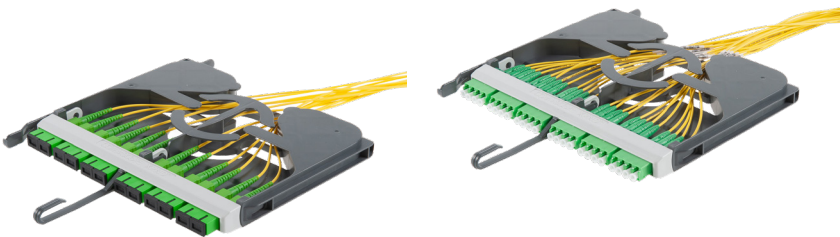
Patch/Splice cassettes are available for use with SC and LC connectors in singlemode with APC and UPC options. Cassette designs for SC connectors feature 12 adapters (12 fiber ports) while those for LC applications offer 12 duplex adapters (24 fiber ports). Patch/Splice cassettes support both stranded and ribbon pigtails.



| Singlemode patch/splice cassettes | | |
|--------------------------------------|--|----------|
| Stranded pigtails | Ports | MID |
| SC ultra polish (UPC) blue adapters | 12 adapters (12 fiber ports) per cassette | XP-PS7-S |
| SC angle polish (APC) Green adapters | 12 adapters (12 fiber ports) per cassette | XP-PSL-S |
| LC ultra polish (UPC) blue adapters | 12 duplex adapters (24 fiber ports) per cassette | XP-PS8-S |
| LC angle polish (APC) Green adapters | 12 duplex adapters (24 fiber ports) per cassette | XP-PSM-S |
| Ribbon Pigtails | Ports | MID |
| SC ultra polish (UPC) blue adapters | 12 adapters (12 fiber ports) per cassette | XP-PS7-R |
| SC angle polish (APC) Green adapters | 12 adapters (12 fiber ports) per cassette | XP-PSL-R |
| LC ultra polish (UPC) blue adapters | 12 duplex adapters (24 fiber ports) per cassette | XP-PS8-R |
| LC angle polish (APC) Green adapters | 12 duplex adapters (24 fiber ports) per cassette | XP-PSM-R |

Fiber pass-through adapter packs

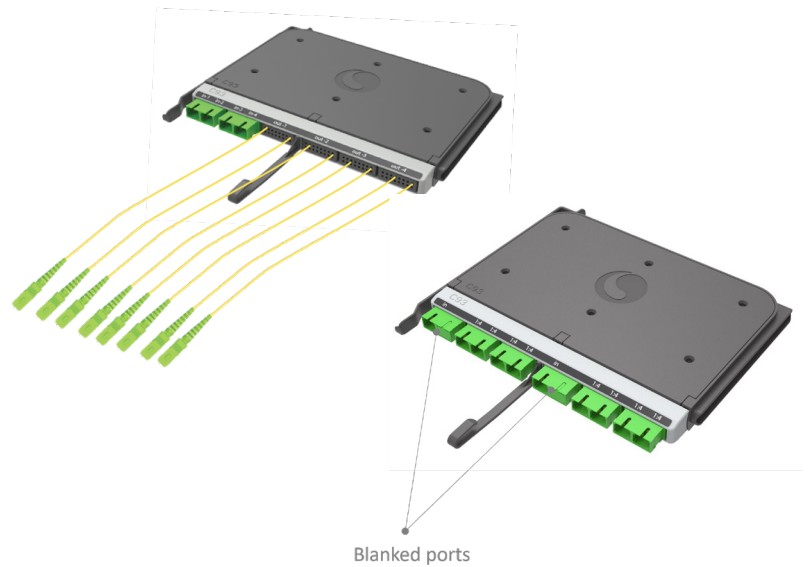
CommScope XPND fiber pass-through adapter packs are available for use with SC and LC connectors in singlemode with APC and UPC finishes. Designs for SC connectors feature 12 adapters (12 fiber ports) while those for LC applications offer 12 duplex adapters (24 fiber ports).



| Fiber pass-through adapter packs | | |
|--------------------------------------|-------------------------------------|--------|
| | Ports | MID |
| SC ultra polish (UPC) blue adapters | 12 adapters (12 fiber ports) | XP-PS7 |
| SC angle polish (APC) green adapters | 12 adapters (12 fiber ports) | XP-PSL |
| LC ultra polish (UPC) blue adapters | 12 duplex adapters (24 fiber ports) | XP-PS8 |
| LC angle polish (APC) green adapters | 12 duplex adapters (24 fiber ports) | XP-PSM |

Splitter modules

With high and low count splitter modules, the CommScope XPND portfolio enables a variety of FTTH designs. Low count splitters (1x2 to 1x8) can be used in a distributed split architecture, where the next stage splitter is implemented in an outside plant cabinet or remote terminal. Higher-count splitters (1x16 to 1x64) use pigtails, and can be used in a centralized split ("home run") architecture, where point-to-point fiber connections connect each home passed to a port on the splitter. CommScope XPND panels easily install next to an OLT, enabling more flexible and efficient FTTH deployment options.



| SC APC | Splitter qty | Splitter type | MID |
|--|--------------|---------------|----------------|
| Adapter-only module Input adapters/output adapters | 1 | 1x2 | XP-SPTJJ110200 |
| | 4 | 1x2 | XP-SPTJJ410200 |
| | 1 | 1x4 | XP-SPTJJ110400 |
| | 2 | 1x4 | XP-SPTJJ210400 |
| | 1 | 1x8 | XP-SPTJJ110800 |
| Pigtailed module Input adapters/output pigtails - 65" | 1 | 1x16 | XP-SPTJJ111665 |
| | 4 | 1x16 | XP-SPTJJ411665 |
| | 1 | 1x32 | XP-SPTJJ113265 |
| | 2 | 1x32 | XP-SPTJJ213265 |
| | 1 | 1x64 | XP-SPTJJ116465 |
| LC APC | Splitter qty | Splitter type | MID |
| Adapter-only module Input adapters/output adapters | 1 | 1x2 | XP-SPTMM110200 |
| | 8 | 1x2 | XP-SPTMM810200 |
| | 1 | 1x4 | XP-SPTMM110400 |
| | 4 | 1x4 | XP-SPTMM410400 |
| | 1 | 1x8 | XP-SPTMM110800 |
| | 2 | 1x8 | XP-SPTMM210800 |
| Pigtailed module Input adapters/output pigtails - 65" | 1 | 1x16 | XP-SPTMM111665 |
| | 4 | 1x16 | XP-SPTMM411665 |
| | 1 | 1x32 | XP-SPTMM113265 |
| | 2 | 1x32 | XP-SPTMM213265 |
| | 1 | 1x64 | XP-SPTMM116465 |

Patch cords

As a global leader in fiber cabling, CommScope ensures you have the right fiber cable patch cords to match your CommScope XPND platform. Our singlemode simplex patch cords are factory-connectorized and machine-polished, ensuring the best combination of speed, seamless connectivity, reliability and easy handling.

| Standard Configurations | Connector A | Connector B |
|-------------------------|-------------|-------------|
| XPPCSR7/7-xxxM | SC/UPC | SC/UPC |
| XPPCSRJ/J-xxxM | SC/APC | SC/APC |
| XPPCSR8/8-xxxM | LC/UPC | LC/UPC |
| XPPCSRM/M-xxxM | LC/APC | LC/APC |

Note: Replace xxx with length in meters. Example a 10 meter patch cord with SCAPC on both ends would be XPPCSRJ/J-010M

Panel accessories

The CommScope XPND modular fiber platform offers a variety of optional and replacement accessories, enabling you to continue adapting and customizing the solution to meet your evolving needs.

| MID | Description | Included parts |
|--------------------|----------------------------------|---|
| XP-ACCPNLTIEBRK | Panel cable tie-off Bracket | Panel Bracket, screws, and zip tie/Velcro |
| XP-ACCRACKTIEBRK | Rack Rail cable tie-off bracket | Replacement Rack Rail tie off bracket with screws, zip tie/Velcro |
| XP-ACCGNDLUGKIT | Ground lug kit | #10 ground lug and screws |
| Replacement parts | | |
| MID | Description | Included parts (QTY) |
| XP-ACCHDWKIT1U | 1RU shipalong hardware kit | (4) 12-24 rack mounting screws, 23" mounting ears, cable mounting bracket, zip tie, Velcro |
| XP-ACCHDWKIT1.5U | 1.5RU shipalong hardware kit | (4) 12-24 rack mounting screws, 23" mounting ears, cable mounting bracket, zip tie, Velcro |
| XP-ACCHDWKIT3U | 3RU shipalong hardware kit | (4) 12-24 rack mounting screws, 23" mounting ears, cable mounting bracket, zip tie, Velcro, |
| XP-ACCMGRCL-QTY5 | Cassette cable managers | (5) |
| XP-ACCDOORKIT1U | 1RU door kit w/inserts | 1RU Door, 2 top inserts, 2 bottom inserts, label |
| XP-ACCDOORKIT1.5U | 1.5RU door kit w/inserts | 1.5RU Door, 2 top inserts, 2 bottom inserts, label |
| XP-ACCDOORKIT3U | 3RU door kit w/inserts | 3RU Door, 2 top inserts, 2 bottom inserts, label |
| XP-ACCMTBRK19-1U | 1RU 19" mounting brackets | Set of 2 brackets |
| XP-ACCMTBRK19-1.5U | 1.5RU 19" mounting brackets | Set of 2 brackets |
| XP-ACCMTBRK19-3U | 3RU 19" mounting brackets | Set of 2 brackets |
| XP-ACCMTBRK23-1U | 1RU 23" mounting brackets | Set of 2 brackets |
| XP-ACCMTBRK23-1.5U | 1.5RU 23" mounting brackets | Set of 2 brackets |
| XP-ACCMTBRK23-3U | 3RU 23" mounting brackets | Set of 2 brackets |
| XP-ACCDINST-QTY8 | Door hinge and latch inserts | (4) Hinge inserts, (4) latch inserts |
| XP-ACCDRLBL1U-10 | Front and rear door labels 1RU | Pack of 10 labels |
| XP-ACCDRLBL1.5U-10 | Front and rear door labels 1.5RU | Pack of 10 labels |
| XP-ACCDRLBL3U-10 | Front and rear door labels 3RU | Pack of 10 labels |
| XP-ACCMTBRKETSI-1U | 1RU ETSI" mounting brackets | Set of 2 brackets |
| XP-ACCMTBRKETSI15U | 1.5RU ETSI" mounting brackets | Set of 2 brackets |
| XP-ACCMTBRKETSI-3U | 3RU ETSI" mounting brackets | Set of 2 brackets |

How will you XPND?

Your outside fiber plant is a generational investment. To ensure you have the flexibility to grow, reconfigure and manage your fiber, you need a connectivity interface that adapts as your active equipment evolves. That's the power of the CommScope XPND fiber platform. One innovative solution with all the agility and ease of use you need to adapt and evolve easily and efficiently. And as your needs evolve, the CommScope XPND platform evolves with you, adding more components and capabilities over time.

Now it's your move.

With one innovative fiber solution and so many options, how will you XPND?



COMMSCOPE®

[commscope.com](https://www.commscope.com)

© 2025 CommScope, LLC. All rights reserved.

CommScope and the CommScope logo are registered trademarks of CommScope and/or its affiliates in the U.S. and other countries. For additional trademark information see <https://www.commscope.com/trademarks>. All product names, trademarks and registered trademarks are property of their respective owners.

BR-119554.1-EN (05/25)