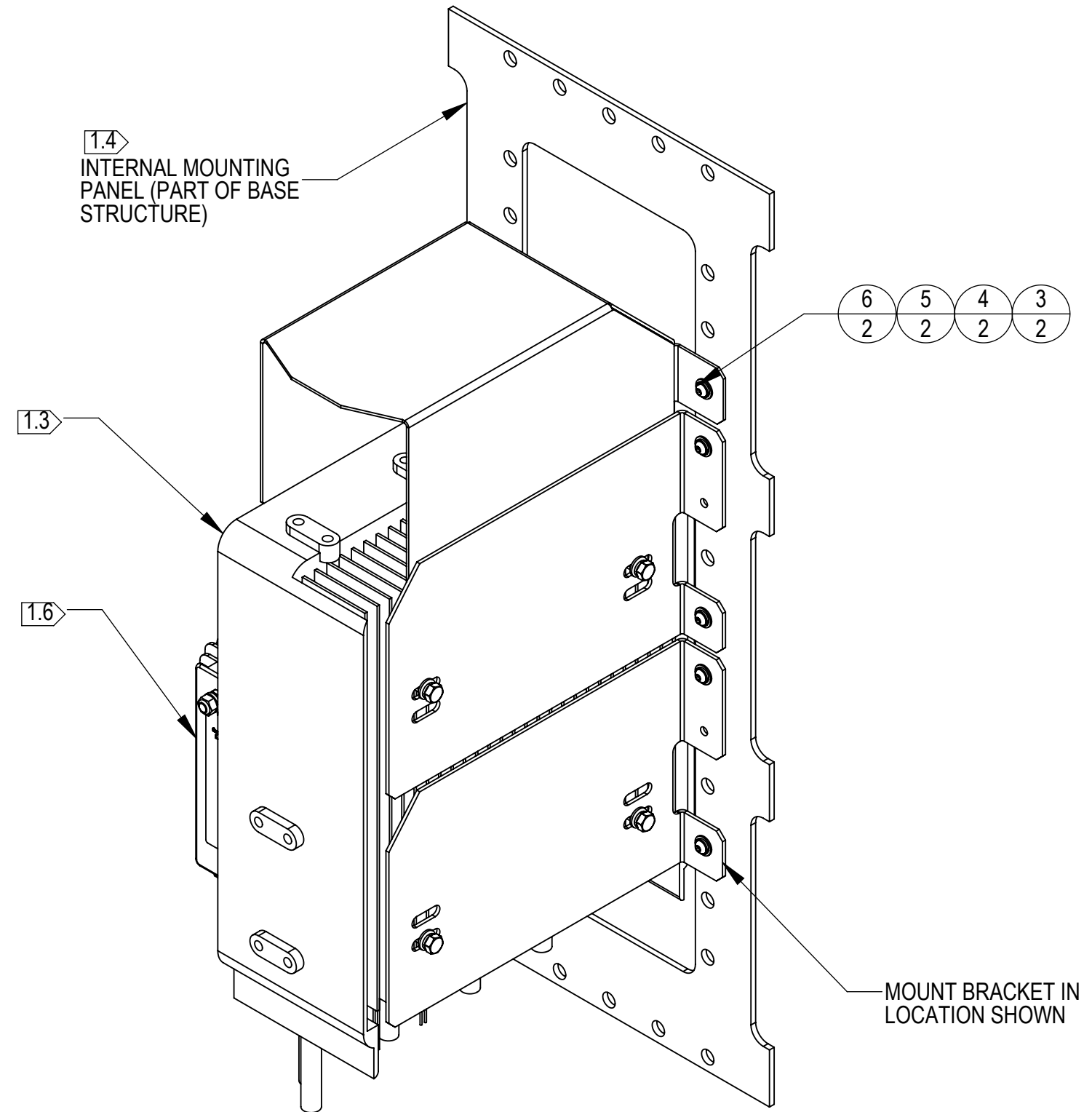
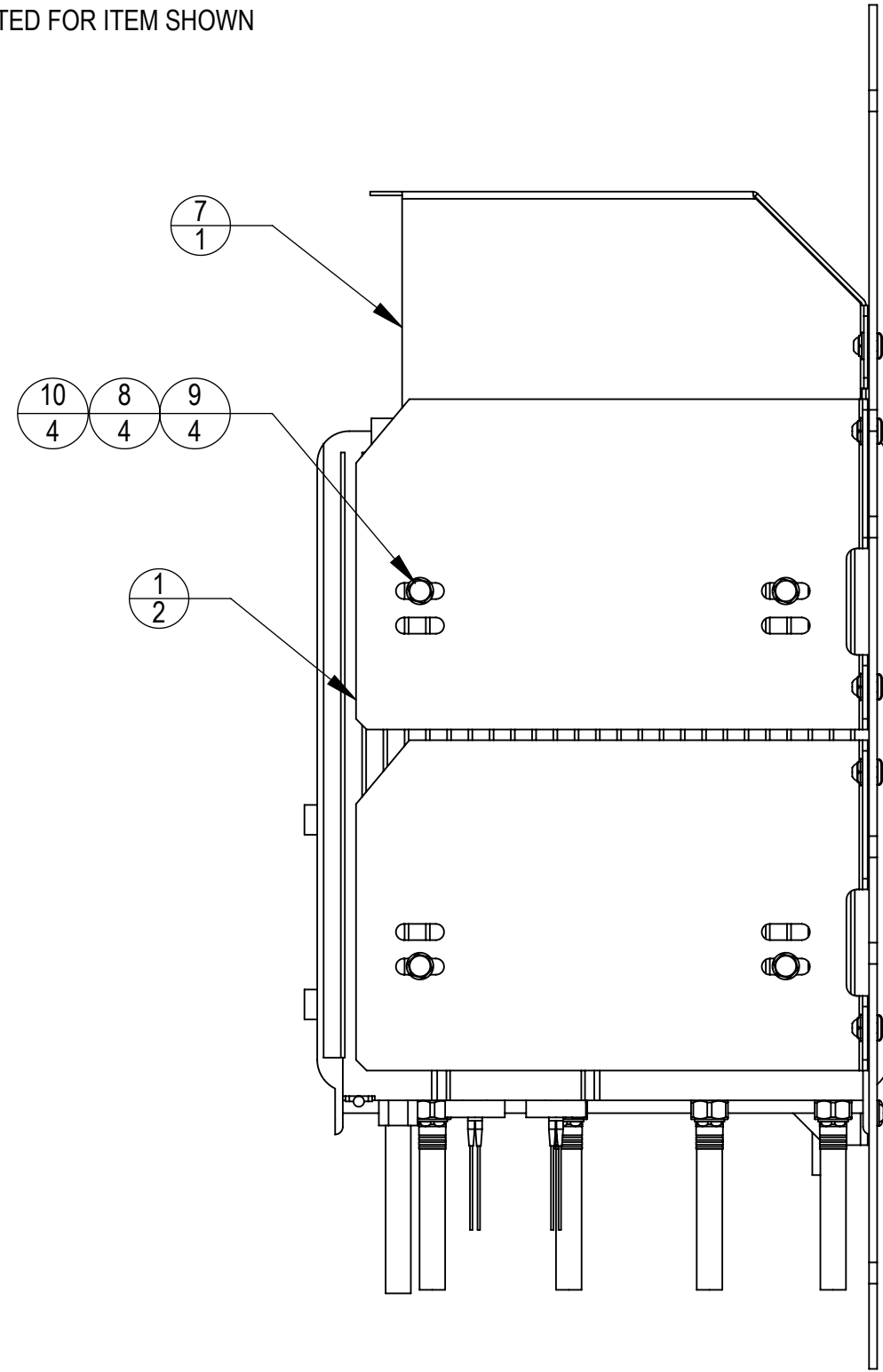


- 1.0 GENERAL NOTES
 - 1.1 ALL METRIC DIMENSIONS ARE IN BRACKETS
 - 1.2 SEE SHEET 2 FOR RRU AND PSU INSTALLATION
 - 1.3 RADIO AND PSU NOT SUPPLIED, SHOWN FOR REFERENCE ONLY
 - 1.4 ITEM IS PART OF BASE STRUCTURE, MTM1028-810, SHOWN FOR REFERENCE ONLY
 - 1.5 INSTALL RADIO ON BRACKET USING HARDWARE INDICATED. SEE SHEET 2
 - 1.6 PARTS SHOWN INSTALLED IN ASSEMBLY
- 2.0 DESIGN NOTES
- 3.0 MANUFACTURING/SPECIAL REQUIREMENT
- 4.0 TEST
- 5.0 PACKAGING
 - 5.1 PACKAGING SHALL MEET COMMSCOPE REQUIREMENTS PER DOCUMENT IS-PL-3005
 - 5.2 BAG AND TAG ALL ITEMS AND HARDWARE SHOWN. PACKAGE IN BOX FOR CUSTOMER INSTALLATION.
 - 5.3 THIS PRINTED DOCUMENT TO BE PLACED INSIDE SHIPPING BOX FOR CUSTOMER REFERENCE
 - 5.4 HARDWARE IS FOR CUSTOMER INSTALLATION. SPARES MAY BE INCLUDED
 - 5.5 BOX NOT SHOWN FOR CLARITY. OTHER BOX SIZES MAY BE SUBSTITUTED FOR ITEM SHOWN

REVISIONS			
REV.	DESCRIPTION	DATE	APPROVED
A	INITIAL RELEASE	AG1119 19NOV18	JP1130 8000032337
B	ITEMS 8,9,10 WERE M10 HARDWARE	AG1119 14DEC18	RW1043 8000032849
C	ADDITIONAL INSTALLATION INSTRUCTIONS	AG1119 07OCT19	GR1010 8000036991
D	MTM1028-681-BR (ITEM 2) WAS MTM1028-681	MS1288 24DEC24	JX1002 40211432CMO


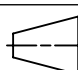


COMPONENT PART NUMBERS PROVIDED FOR ASSEMBLY PURPOSES;
INDIVIDUAL COMPONENTS MAY BE SHIPPED AS PARTS WITHIN AN INCLUDED KIT.

ITEM NO.	PART NUMBER	DESCRIPTION	Default/ QTY.	NOTE
1	MTM1028-680	BRACKET ASSY, ERC4415	2	
2	MTM1028-681-BR	BRACKET, ERC4415 PSU	1	
3	460143456	CLIP NUT, M6, 316 SST	8	5.4
4	SWF-02	1/4" STAINLESS FLAT WASHER	8	5.4
5	SWL-02	LOCK WASHER, 1/4" SS (EA)	8	5.4
6	100560-66	SCR,BUTTN HD,HEXSOCK,M6X20,SST,PASS	8	5.4
7	MTM1028-682	BAFFLE, ERC4415	1	
8	MTC9419	M8 FLAT WASHER SS	4	5.4
9	MTC9415	M8 X 25mm HEX BOLT SS	4	5.4
10	MTC9418	M8 LOCK WASHER SS	4	5.4
11	100521-76	WSHR,FLAT,M4,4.3X9X0.8,SST,PASS	4	5.4
12	100522-13	WSHR,LK,SPLT, M4,SST, PASS	4	5.4
13	100526-13	NUTS,HEX,M4,SST,PASS	4	5.4
14	100622-77	SCR,SHCS,HEXSOCK,M4X16,SST,PASS	4	5.4
8700	MTM1028-070	REFERENCE DOCUMENT	1	5.3
8000	BX22135	BOX, 23 X 13 X 15	1	5.5

INSTALLED ASSEMBLY

DENSITY		lbs/in
MASS	21.88	lbs
VOLUME	965.55	in ³
SURFACE AREA	4818.45	in ²
HEIGHT	15.00[381.0]	
LENGTH	23.00[584.2]	
WIDTH	13.00[330.2]	

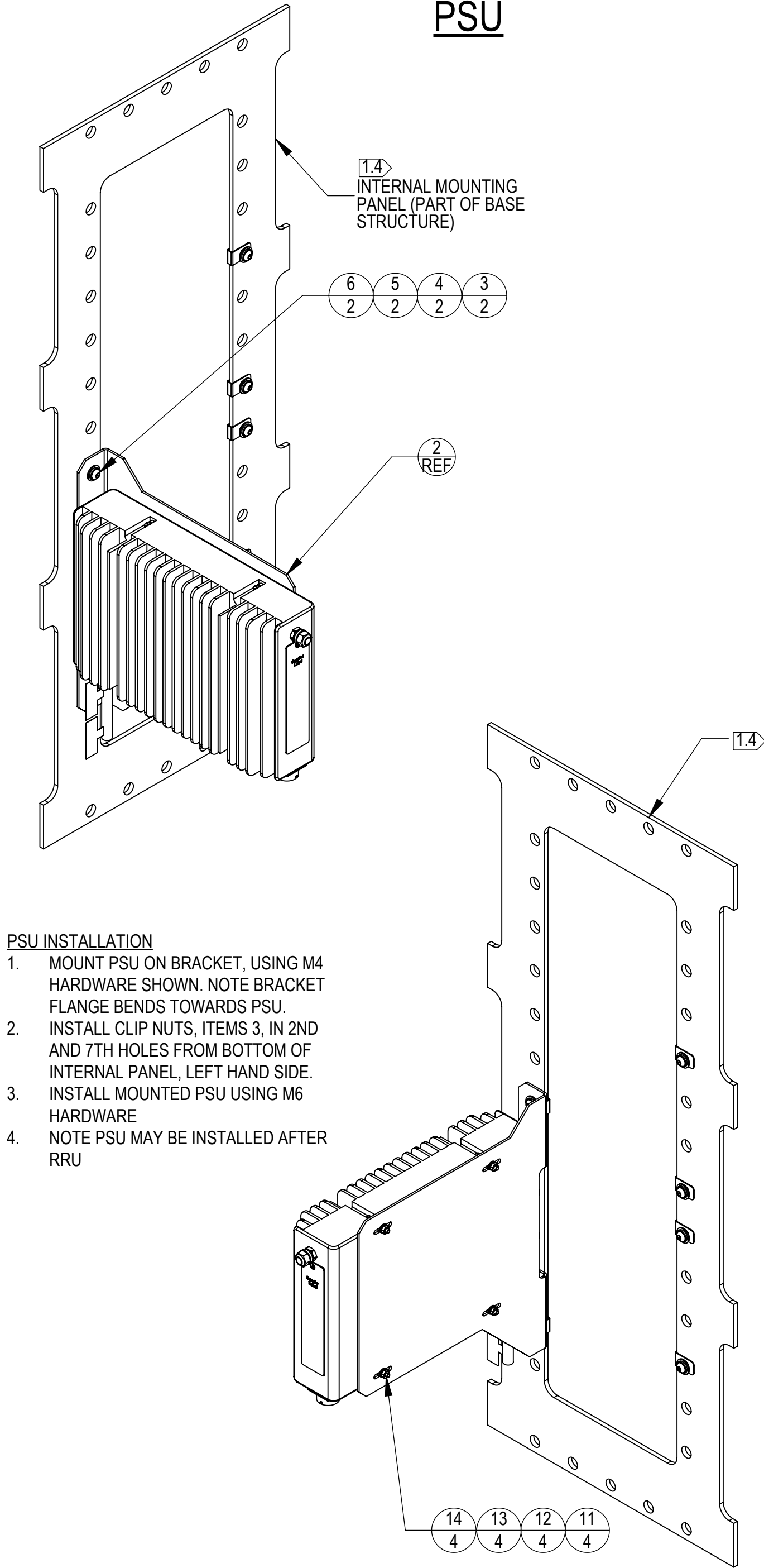
COMMSCOPE, INC. OF NORTH CAROLINA														
TOLERANCES						SAP MATERIAL MASTER								
1 PLACE .X[X] ± 0.1[3.0]		3 PLACE .XXX[X] ± 0.032[0.8]				MTM1028-070								
2 PLACE .XX[X] ± 0.06[1.5]		ANGLES ± 2°												
FINISH						MATERIAL								
SHEET METAL KIT, ERC4415														
										UNLESS OTHERWISE SPECIFIED DIMENSIONS ARE IN INCHES INTERPRET PER ANSI Y14.5M-1994		NAME	DATE	TITLE
											CE	AG1119	19 NOV 18	
											RW	MS1288	12/24/2024	
											RV			
											AD	JX1002	01/09/2025	
											RE	DM1121	02/24/2025	
ECN 40211432CMO				SCALE	DOCUMENT NO.									
				1:4	MTM1028-070									
SIZE	WORK AREA	INSL	MODEL			DRAWING			SHEET 1 OF 2					
C			VERSION	STATUS	REVISION	VERSION	STATUS	REVISION						
			03	RE	D	05	RE	D						

PSU

RRU

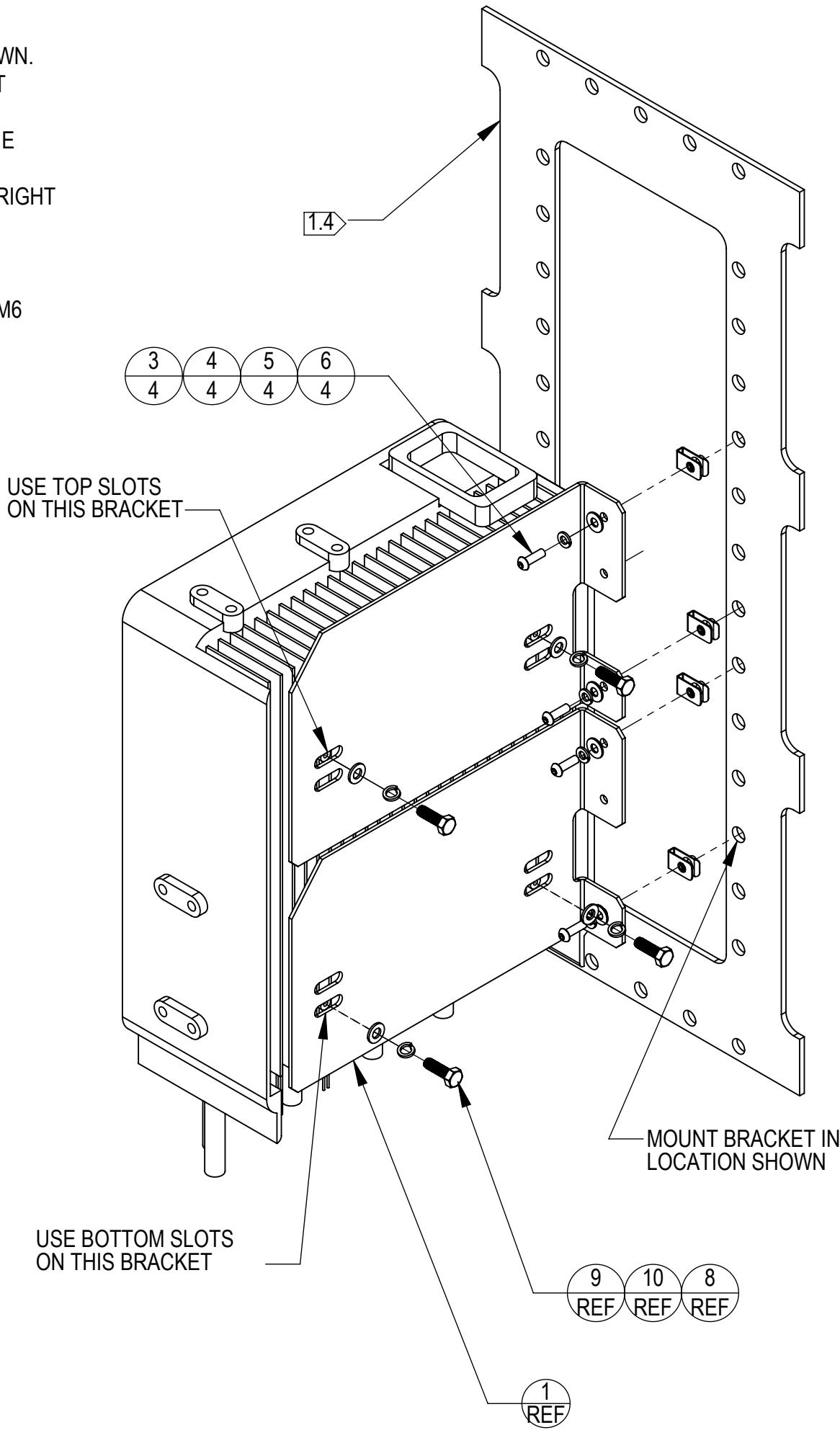
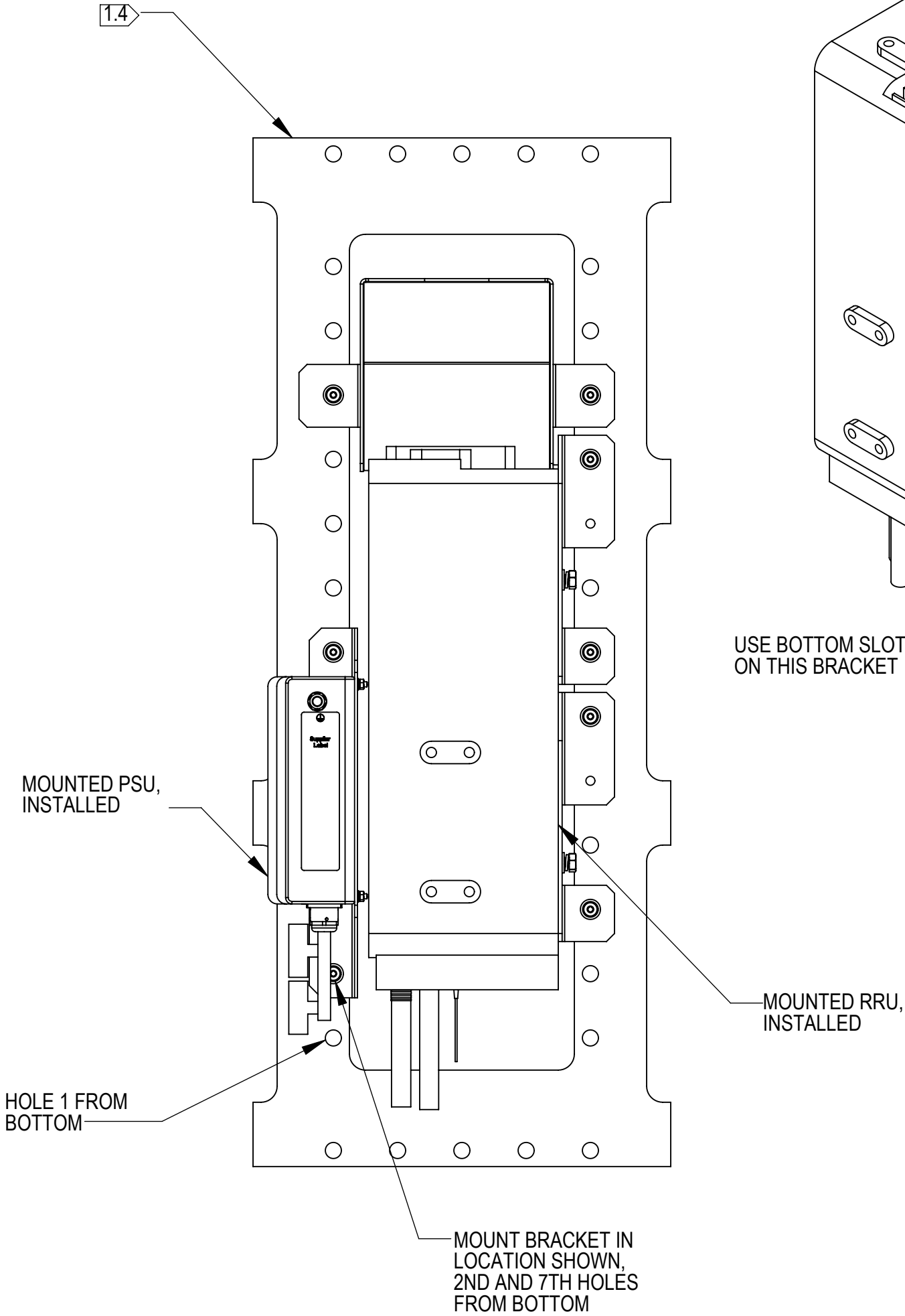
RRU INSTALLATION

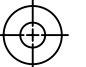
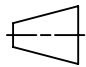
- 1. INSTALL RRU ON TWO MOUNTING BRACKETS, USING M8 HARDWARE SHOWN. MOUNT TOP BRACKET USING TWO TOP SLOTS, MOUNT BOTTOM BRACKET USING TWO BOTTOM SLOTS.
- 2. A 2x4, APPROXIMATELY 18 IN LONG, LAID ACROSS THE BOTTOM LIP OF THE INTERNAL PANEL, MAY HELP SUPPORT THE RRU DURING INSTALLATION
- 3. INSTALL CLIP NUTS, ITEMS 3, IN HOLES 3, 6, 7 AND 10 FROM BOTTOM, ON RIGHT SIDE OF INTERNAL PANEL.
- 4. INSTALL MOUNTED RRU ON INTERNAL PANEL USING M6 HARDWARE
- 5. IF NOT INSTALLED, PSU MAY BE INSTALLED AFTER RRU
- 6. INSTALL AIR BAFFLE, ITEM 7, IN ROW ABOVE RRU USING CLIP NUTS AND M6 HARDWARE



PSU INSTALLATION

- 1. MOUNT PSU ON BRACKET, USING M4 HARDWARE SHOWN. NOTE BRACKET FLANGE BENDS TOWARDS PSU.
- 2. INSTALL CLIP NUTS, ITEMS 3, IN 2ND AND 7TH HOLES FROM BOTTOM OF INTERNAL PANEL, LEFT HAND SIDE.
- 3. INSTALL MOUNTED PSU USING M6 HARDWARE
- 4. NOTE PSU MAY BE INSTALLED AFTER RRU



COMMScope, INC. OF NORTH CAROLINA					
TITLE					
SHEET METAL KIT, ERC4415					
SIZE	SCALE	DOCUMENT NO.			
C	1:8	MTM1028-070			
 		DRAWING			SHEET 2 OF 2
		VERSION	STATUS	REVISION	
		05	RE	D	