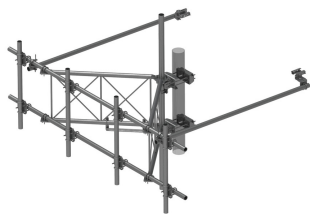


SFG23RHDXL14-4-96



G23RHDXL PIM OPTIMIZED SPACING High Capacity Sector Frame with extended 10' Spine for RRU Mounting & extended frame for sites requiring increased sector to sector antenna spacing. 2 7/8in OD x 14.5ft face with (4) 2-7/8in OD x 96in Antenna pipes

Product Classification

Product Type	High capacity Tower sector frame
Product Brand	PIM-guard
Product Series	G2

General Specifications

Mounting	Angle 60°, 203.2 mm (8 in) Straight or tapered legs up to 203.2 mm (8 in) OD
Patent Number	For patents see: www.cs-pat.com
Pipe, quantity	4
Sectors, quantity	1
Tower Taper	Non-tapered Tapered

Dimensions

Height	2,438.4 mm 96 in
Face Width	4.42 m 14.5 ft
Platform Width	4,419.6 mm 174 in
Face Support Pipe Diameter	73.025 mm 2.875 in
Mounting Diameter, maximum	203.2 mm 8 in
Mounting Diameter, minimum	38.1 mm 1.5 in
Pipe Outer Diameter	73.025 mm 2.875 in

Material Specifications

Material Type	Hot dip galvanized steel
---------------	--------------------------

Mechanical Specifications

Wind Rating	For Specifications, please contact your local ANDREW representative
Wind Rating Test Method	TIA/EIA-222-G

SFG23RHDXL14-4-96

Packaging and Weights

Included	Frame Plain end pipes (4) Stiff arms (2) Tower attachment
Packaging quantity	1

* Footnotes

Wind Rating	BWS—Base Wind Speed; FBC—Florida Building Code
-------------	--