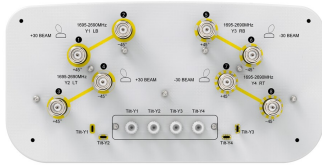


# 2VV-33B-ROVB-V2



8-port multibeam antenna, 8x 1695–2690 MHz, 4x 33° HPBW

- Enhances Network Capacity and Spectrum Utilization: Ideal for six-sector applications
- Versatile Adjustment: Manual tilt with indicators, and RET compatible with simple on-site “plug-in” replacement
- Consistent Performance: Ensures reliable performance across the entire band

## General Specifications

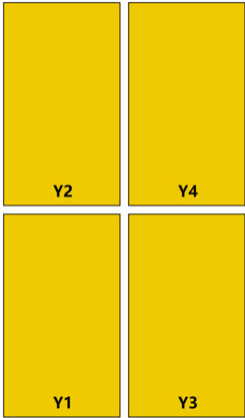
<b>Antenna Type</b>	Multibeam
<b>Band</b>	Single band
<b>Color</b>	Light Gray (RAL 7035)
<b>Grounding Type</b>	RF connector inner conductor and body grounded to reflector and mounting bracket
<b>Performance Note</b>	Outdoor usage
<b>Radome Material</b>	Fiberglass, UV resistant
<b>Radiator Material</b>	Aluminum
<b>Reflector Material</b>	Aluminum
<b>RF Connector Interface</b>	4.3-10 Female
<b>RF Connector Location</b>	Bottom
<b>RF Connector Quantity, mid band</b>	8
<b>RF Connector Quantity, total</b>	8

## Dimensions

<b>Width</b>	397 mm   15.63 in
<b>Depth</b>	197 mm   7.756 in
<b>Length</b>	1997 mm   78.622 in
<b>Net Weight, antenna only</b>	20.9 kg   46.077 lb

## Array Layout

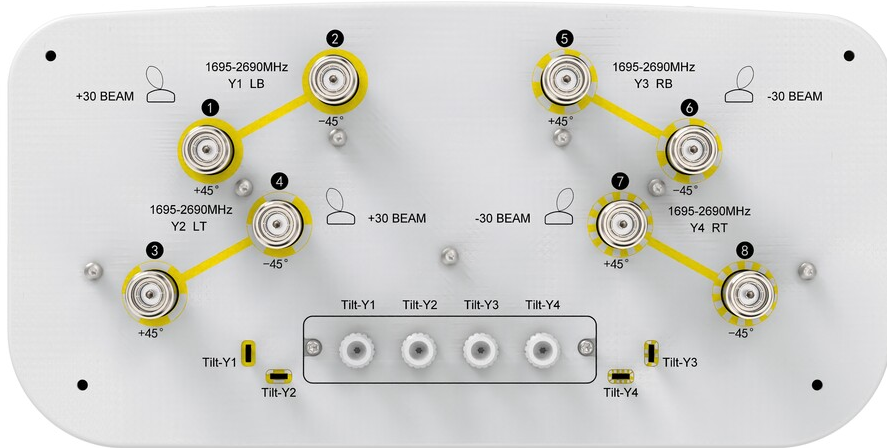
# 2VV-33B-ROVB-V2



Array ID	Frequency (MHz)	RF Connector	HPBW	RET (N/A)	AISG No.	RET UID
Y1	1695-2690	1 - 2	33°	N/A	NA	N/A
Y2	1695-2690	3 - 4	33°			
Y3	1695-2690	5 - 6	33°			
Y4	1695-2690	7 - 8	33°			

(Sizes of colored boxes are not true depictions of array sizes)

## Port Configuration



## Electrical Specifications

<b>Impedance</b>	50 ohm
<b>Operating Frequency Band</b>	1695 – 2690 MHz
<b>Polarization</b>	±45°
<b>Total Input Power, maximum</b>	1,000 W

# 2VV-33B-ROVB-V2

## Electrical Specifications

	Y1-Y4	Y1-Y4	Y1-Y4	Y1-Y4
<b>Frequency Band, MHz</b>	<b>1695–1995</b>	<b>1920–2300</b>	<b>2300–2500</b>	<b>2490–2690</b>
<b>RF Port</b>	1-8	1-8	1-8	1-8
<b>Gain, dBi</b>	18.8	19.1	19.8	19.8
<b>Beam Centers, Horizontal, degrees</b>	±30	±30	±30	±30
<b>Beamwidth, Horizontal, degrees</b>	39	35	30	28
<b>Beamwidth, Vertical, degrees</b>	9.8	8.8	7.5	6.9
<b>Beam Tilt, degrees</b>	2–12	2–12	2–12	2–12
<b>USLS (First Lobe), dB</b>	16	21	21	20
<b>Front-to-Back Ratio, Copolarization 180° ± 30°, dB</b>	29	31	30	29
<b>Isolation, Cross Polarization, dB</b>	25	25	25	25
<b>Isolation, Inter-band, dB</b>	25	25	25	25
<b>Isolation, Beam to Beam, dB</b>	25	25	25	25
<b>VSWR   Return loss, dB</b>	1.5 14.0	1.5 14.0	1.5 14.0	1.5 14.0
<b>PIM, 3rd Order, 2 x 20 W, dBc</b>	-150	-150	-150	-150
<b>Input Power per Port, maximum, watts</b>	200	200	200	200

## Mechanical Specifications

<b>Wind Loading @ Velocity, frontal</b>	625.0 N @ 150 km/h (140.5 lbf @ 150 km/h)
<b>Wind Loading @ Velocity, lateral</b>	289.0 N @ 150 km/h (65.0 lbf @ 150 km/h)
<b>Wind Loading @ Velocity, rear</b>	270.0 N @ 150 km/h (60.7 lbf @ 150 km/h)
<b>Wind Speed, maximum</b>	200 km/h (124 mph)

## Packaging and Weights

<b>Width, packed</b>	492 mm   19.37 in
<b>Depth, packed</b>	317 mm   12.48 in
<b>Length, packed</b>	2197 mm   86.496 in
<b>Weight, gross</b>	31.7 kg   69.886 lb

## Regulatory Compliance/Certifications

Agency	Classification
ISO 9001:2015	Designed, manufactured and/or distributed under this quality management system

# 2VV-33B-ROVB-V2

---

UK-ROHS

Compliant

## Included Products

- BSAMNT-B95-04 – Wide Profile Antenna Downtilt Mounting Kit for 2.4 - 4.5 in (60 - 115 mm) OD round members. Kit contains one scissor top bracket set and one bottom bracket set.

## \* Footnotes

### **Performance Note**

Severe environmental conditions may degrade optimum performance