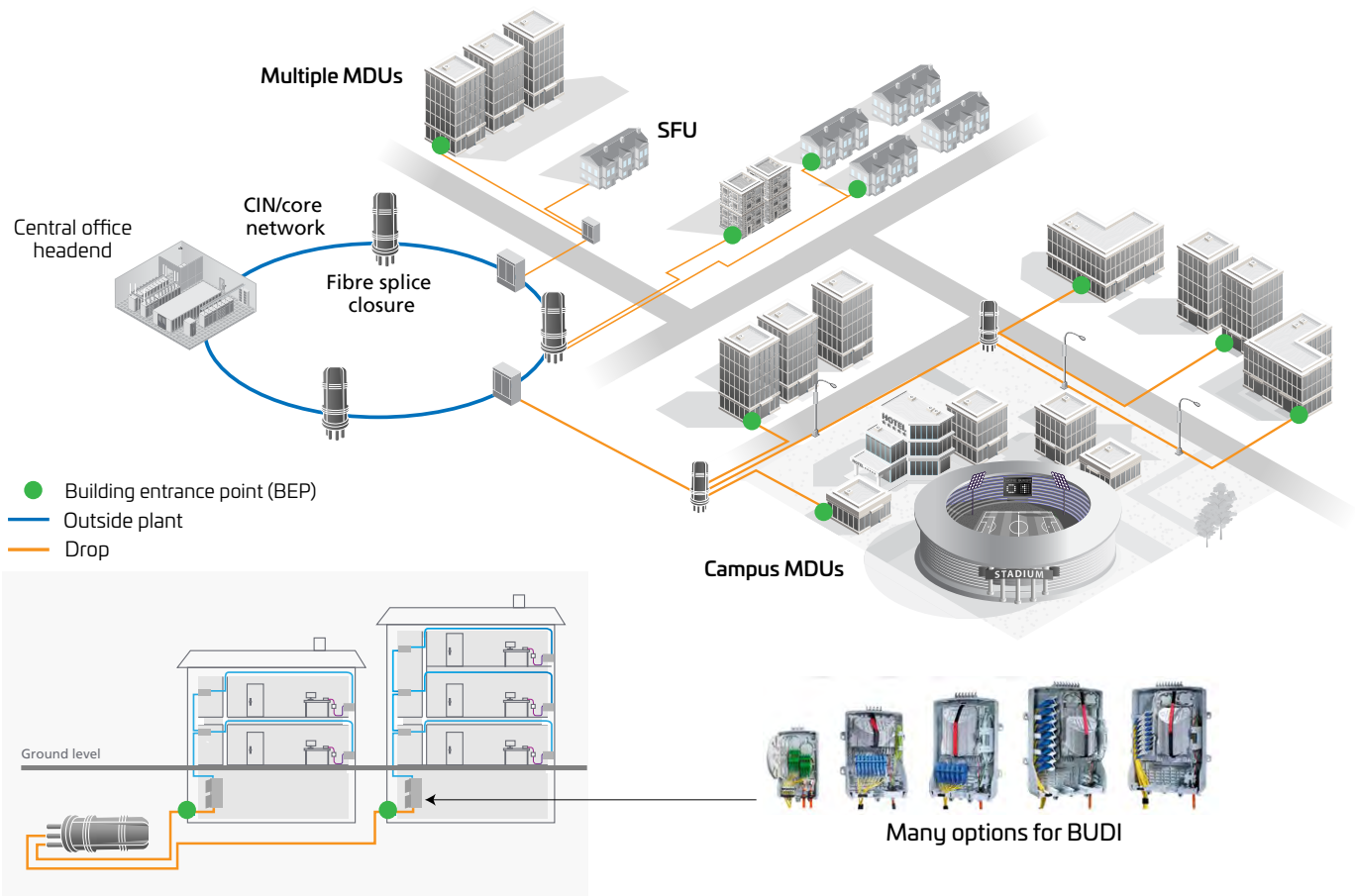




BUDI™ MDU EMEA fibre termination platform



The options begin where your OSP ends



Across Europe, Middle East and Africa, multisystem operators (MSOs) and utility providers are under constant pressure to deploy more fibre connections in less time and for lower costs, especially when it comes to the last mile. The faster fibre segments can be installed, the sooner operators can turn up new or additional revenue sources.

Multi-dwelling units (MDUs) represent an attractive last-mile opportunity. Installers can connect dozens or even hundreds of residential units with just a few runs of fibre from the street to the building. To leverage the opportunity, however, you need the right building entrance points (BEPs). Therein lies the challenge.

Every MDU last-mile deployment has many unique requirements, too many to be satisfied by any single BEP. Network operators and installers need a line of proven and dependable solutions they can rely on to address all variables and challenges adequately and consistently.

Why finding the “right” BEP can be so hard

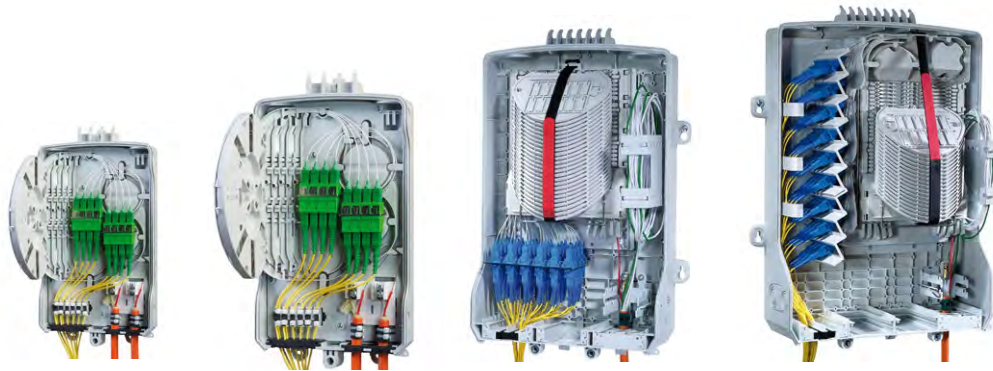
MDUs range from a few units in a small space to huge developments with multiple buildings over many hectares. Each project has unique BEP requirements:

- ✓ Box size and mounting type
- ✓ Termination type/capacity
- ✓ Connector interface types
- ✓ Transport technology (GPON/EPON/etc.)
- ✓ Weather seal requirements
- ✓ Length of deployment window

The right BEP is the one that fulfills the most requirements for the specific installation.

BUDI™: One termination platform for virtually any MDU project

The CommScope Building Distribution (BUDI™) family of BEP solutions gives MSOs, utility providers and their installers a single comprehensive portfolio that meets most FTTP deployment requirements for small and medium-size MDUs. It incorporates proven fibre routing, spliced and connectorised cable termination and supports a full range of port counts, connector interfaces and onboard storage needs. Available add-on passive optical modules support the new G/EPON architecture.



Size	BUDI-2S	BUDI-1S	BUDI-S	BUDI-M
Height box (mm)	260	340	425	480
Height cover (mm)	285	420	500	550
Width (mm)	155	240	295	360
Depth (mm)	60	120	145	175

KEY FEATURES

- Customisable and uniform modular platform
- Indoor/outdoor wall-mounted fibre boxes
- Add-on modules for new G/EPON architectures
- Splicing-only or splice-patch
- Lockable/removable cover
- High connector density
- Unique sealing technology
- UL listed, UV resistant, IP54 rated
- Designed for fast, easy, consistent deployment
- Patented FIST splice/fibre control system

The BUDI portfolio consists of four sizes. Each can be configured for splice-only or splice/patch capabilities. The high-density design can accommodate up to 288 fibres and a port capacity up to 96 ports for splice / patch and 432 fibres for splice only using SLE trays¹.

Optional cable entry grommets support most common MDU cable types, while a unique sealing technology provides superior protection for your fibre investment. All BUDI solutions are built on a common framework that uses common components and installation practices.

Instead of having to master multiple BEP designs and deployment methods, installation crews can use one familiar and repeatable approach for virtually any MDU deployment.

¹ Using SOSA SLE tray with a 25 mm bend radius.



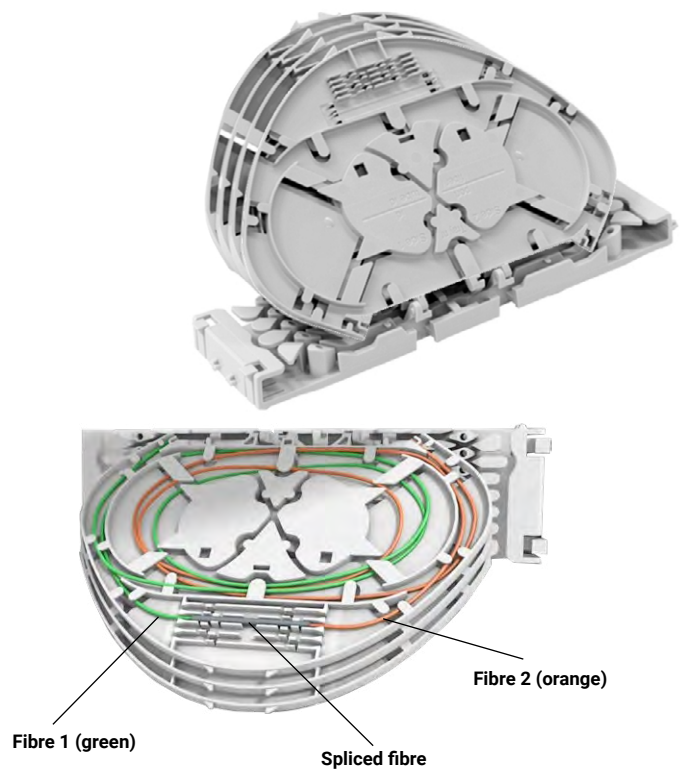
With BUDI, installation crews can use one familiar and repeatable approach for virtually any MDU deployment

Splice or patch, the efficiency of FIST technology

BUDI boxes incorporate CommScope's FIST fibre management technology that ensures fast deployment and easy customer connection. FIST trays are designed to store fibre slack and spliced/patched fibre for maximum efficiency and access. A "wraparound" groove plate features slots for routing fibre to and from the organizer trays.

When used for splice-only applications, BUDI accommodates single circuit (SC) and single element (SE) management. The FIST-based Universal Mounting System (UMS) profiles enable you to combine splice-only modules and splitter-array modules in the same box. You can mix and match SC, SE and SLE trays in all versions (splice & splice/patch). Incorporating the established UMS system used within FIST, it is possible to accommodate FIST SOSA units, mixing SE, SC or even FIST-FSASA units incorporating 250 µm fibre.

Greater splice density can also be achieved with each enclosure with the "slim" SLE single element trays, but these are limited to fibre with a 25 mm bend radius or less.



What makes BUDI different?



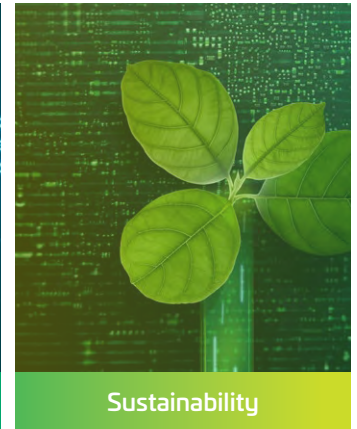
- Four sizes enable splice capacities from 2 to 432 fibres
- Supports both splice and splice/patch configurations
- Available with 24, 48, 72 and 96 PON ports
- Provides both SC and LC connectivity options



- Meets IEC 61753-11P54 category C, G and A requirements
- Uses fire-retardant, LSZH materials
- Box material is UV stable for outdoor above-ground use
- Optional locks prevent unauthorised access



- Configurable port count: 2 to 96
- Push-through seal (cut cables) or wrap-around (uncut cables)
- Mount single element, single circuit trays and splice trays
- Ability to integrate passive optical components



- High reliability reduces repairs, truck rolls and fuel consumption
- Modular FIST tray design fits in our Sustainable Manufacturing Process Strategy to minimise the GHG impact
- Higher capacity means fewer boxes needed, minimising environmental cost
- Carbon Footprint calculations are available (CIBSE TM65)



Whatever your MDU requirements—there's a BUDI box for that.

The opportunities and challenges of last-mile deployment are evolving quickly, especially with regards to small and medium-size MDUs. Network operators need to be agile and equipped to handle whatever comes their way.

That's the advantage of CommScope's BUDI family of BEPs. Designed for high fibre capacity, fast deployment and easy upgrades, BUDI boxes support a broad range of configurations with a familiar and repeatable design. As a result, they help accelerate ROI and service turn-up while reducing maintenance needs as well as your environmental impact. Everything you expect from an industry leader.

For more information on CommScope's BUDI family of BEP solutions, please check our [BUDI EMEA Ordering Guide](#).

CommScope pushes the boundaries of communications technology with game-changing ideas and ground-breaking discoveries that spark profound human achievement. We collaborate with our customers and partners to design, create and build the world's most advanced networks. It is our passion and commitment to identify the next opportunity and realize a better tomorrow. [Discover more at commscope.com](https://www.commscope.com).



[commscope.com](https://www.commscope.com)

Visit our website or contact your local CommScope representative for more information.

© 2024 CommScope, LLC. All rights reserved. CommScope and the CommScope logo are registered trademarks of CommScope and/or its affiliates in the U.S. and other countries. For additional trademark information see, <https://www.commscope.com/trademarks>. All product names, trademarks and registered trademarks are property of their respective owners.

BR-118920-EN (07/24)